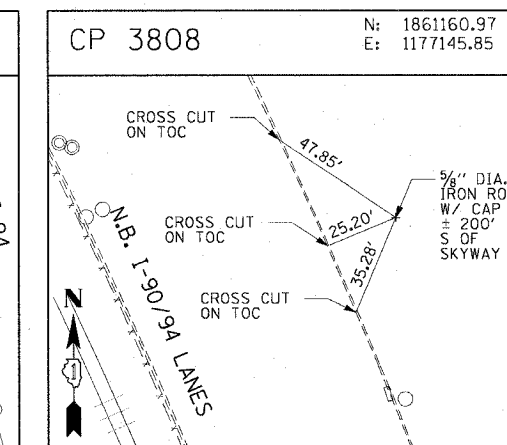
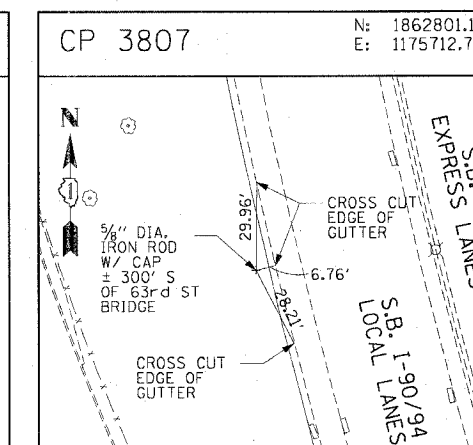
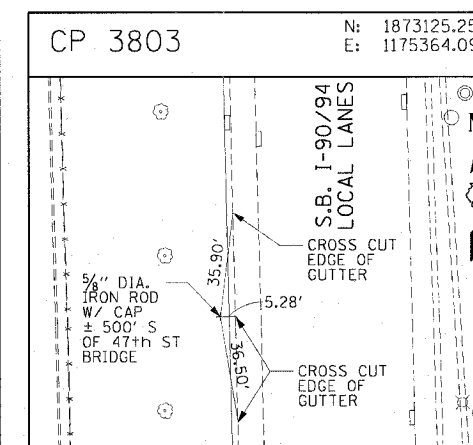
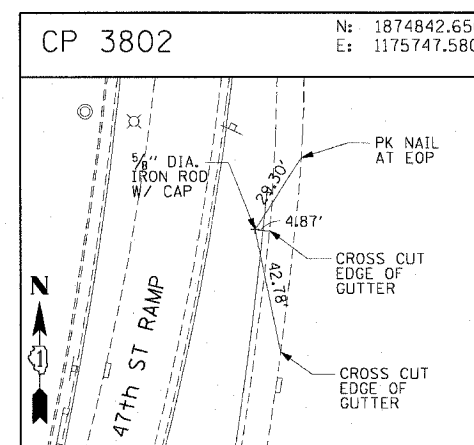
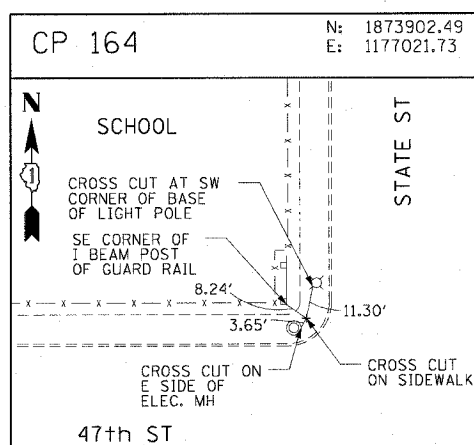
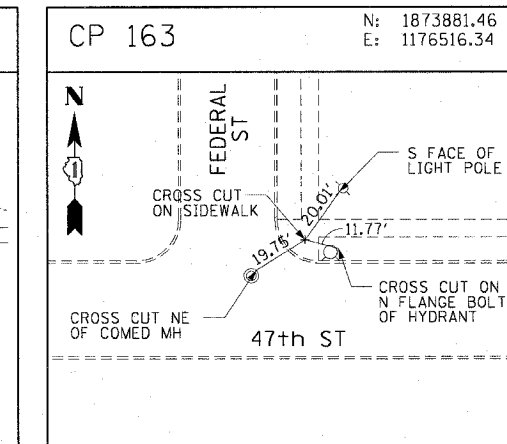
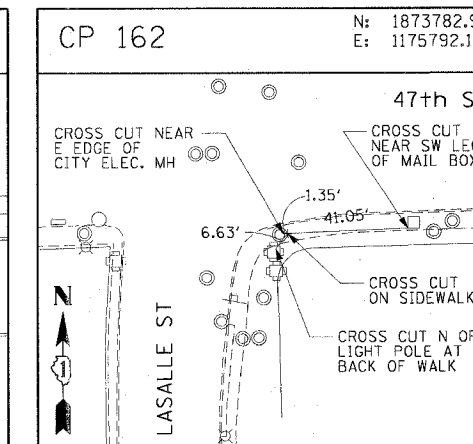
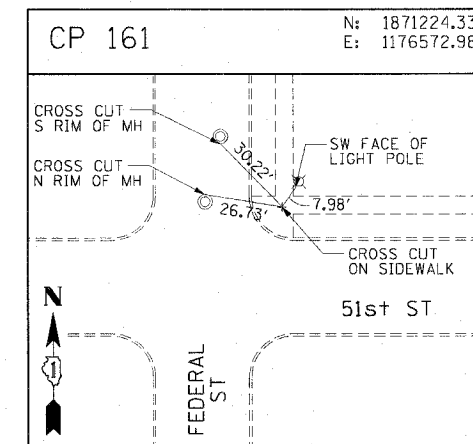
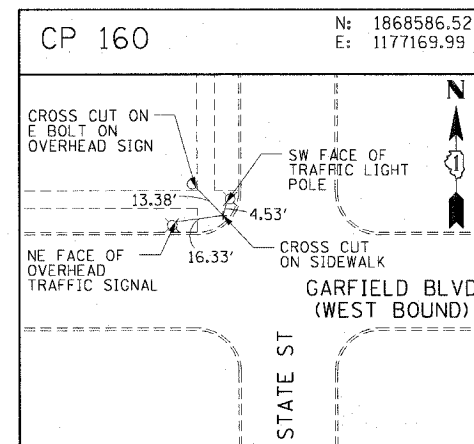
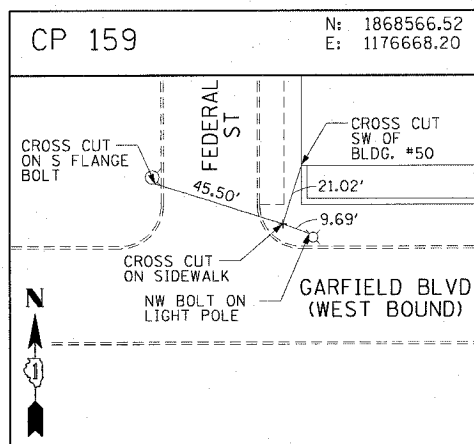
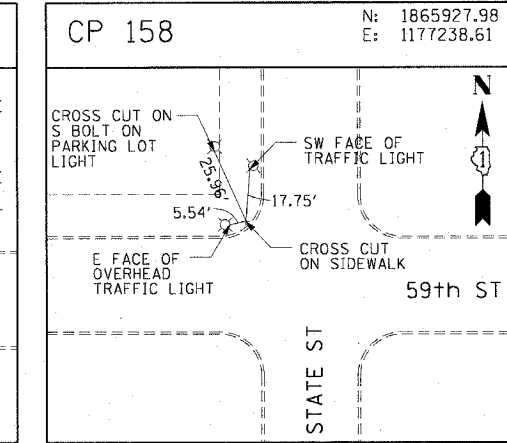
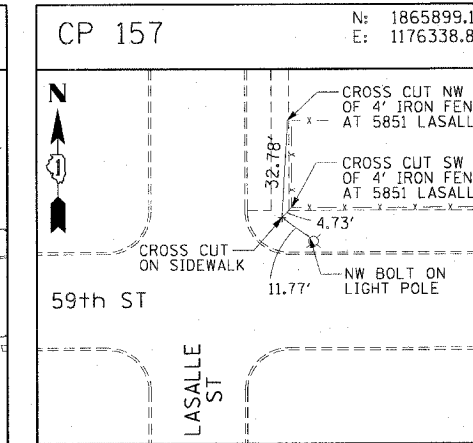
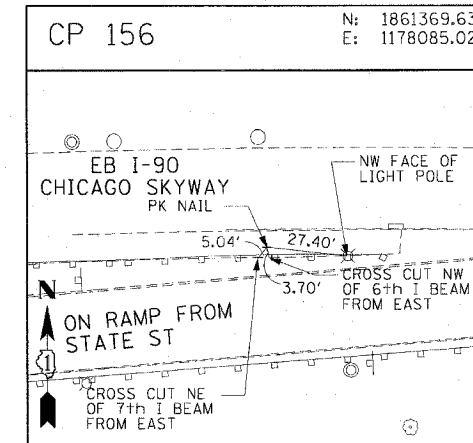
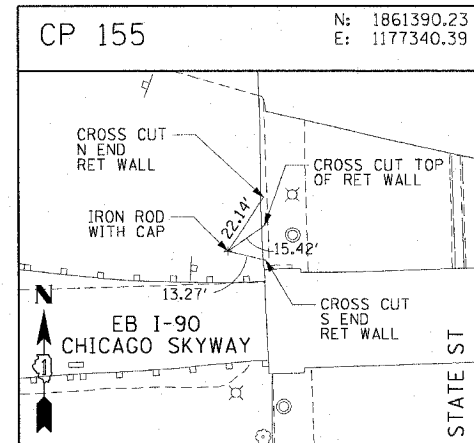
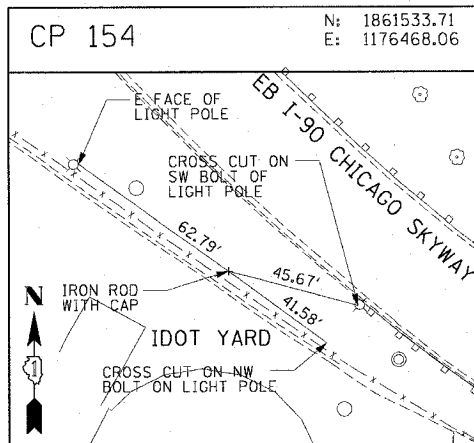


F.A.I. RTE.	SECTION	COUNTY	TOTAL SHEETS	SHEET NO.
90/94	2005-072 LS	COOK	38	14
STA.		TO STA.		
FED. ROAD DIST. NO. 1		ILLINOIS FED. AID PROJECT		
60A78				



CTE | AECOM

REVISIONS	
NAME	DATE

ILLINOIS DEPARTMENT OF TRANSPORTATION
 F.A.I. 90/94 (DAN RYAN EXPRESSWAY)
 47TH STREET GATEWAY LANDSCAPING AND IRRIGATION
 SURVEY TIES AND CONTROL POINTS
 SCALE: 1"=30'
 DATE: MAY 02, 2008
 DRAWN BY: MRK
 CHECKED BY: JAL

F:\040466\ch\N29-gateway_Landscaping\117111\N29\042.dwg
 05/01/2008 04:09:36 PM