

STATE OF ILLINOIS  
DEPARTMENT OF TRANSPORTATION  
DIVISION OF HIGHWAYS

F.A.P. RTE.	SECTION	COUNTY	TOTAL SHEETS	SHEET NO.
880	12 RS-3	LAKE	21	1
FED. ROAD DIST. NO.		ILLINOIS	CONTRACT NO. 60B45	

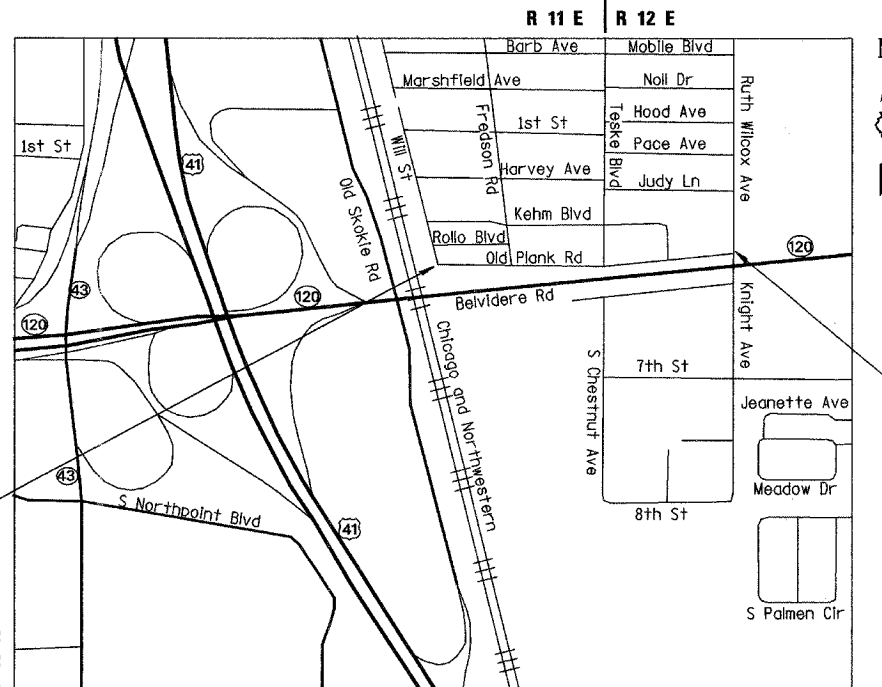
\* 21-3-24

FOR INDEX OF SHEETS, SEE SHEET NO. 2

THIS IMPROVEMENT IS LOCATED  
WITHIN THE CITY OF  
PARK CITY

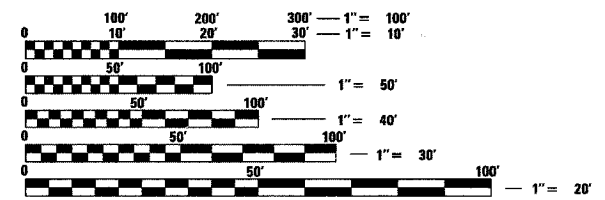
**TRAFFIC DATA**  
2005 ADT - 4500  
POSTED SPEED LIMIT - 25 MPH

**PROPOSED  
HIGHWAY PLANS**  
FAP 880 (IL 120 - NORTH FRONTAGE ROAD)  
SECTION 12 RS-3  
WILL AVENUE TO KNIGHT AVENUE  
RESURFACING (3P)  
LAKE COUNTY  
C-91-346-06



END IMPROVEMENT  
STA. 115 + 79.85

BEGIN IMPROVEMENT  
STA. 100 + 00.00



FULL SIZE PLANS HAVE BEEN PREPARED USING STANDARD ENGINEERING SCALES. REDUCED SIZED PLANS WILL NOT CONFORM TO STANDARD SCALES. IN MAKING MEASUREMENTS ON REDUCED PLANS, THE ABOVE SCALES MAY BE USED.

J.U.L.I.E.  
JOINT UTILITY LOCATION INFORMATION FOR EXCAVATION  
1-800-892-0123  
OR 811

**Ciorba Group, Inc.**  
DESIGN FIRM  
REGISTRATION NUMBER  
184-001016  
CONSULTING ENGINEERS  
SUITE 402, 5507 NORTH CUMBERLAND AVE  
CHICAGO, ILLINOIS 60656 :: (773) 775-4009

WARREN TOWNSHIP / WAUKEGAN TOWNSHIP  
LOCATION MAP  
1" = 2000'  
GROSS AND NET LENGTH OF PROJECT = 1579.85 FT = 0.30 MI.



STATE OF ILLINOIS  
DEPARTMENT OF TRANSPORTATION  
DIVISION OF HIGHWAYS

SUBMITTED MAY 29, 2008

Diana M. O'Keefe  
DEPUTY DIRECTOR OF HIGHWAYS, REGION ENGINEER

June 27, 2008  
Eric E. Harrel  
INTERIM ENGINEER OF DESIGN AND ENVIRONMENT

June 27, 2008  
Christine M. Reed  
DIRECTOR OF HIGHWAYS, CHIEF ENGINEER

**PRINTED BY THE AUTHORITY  
OF THE STATE OF ILLINOIS**

CONTRACT NO. 60B45

DISTRICT 1 DESIGN PLAN PREPARATION ENGINEER: K. ENG (847)-705-4247