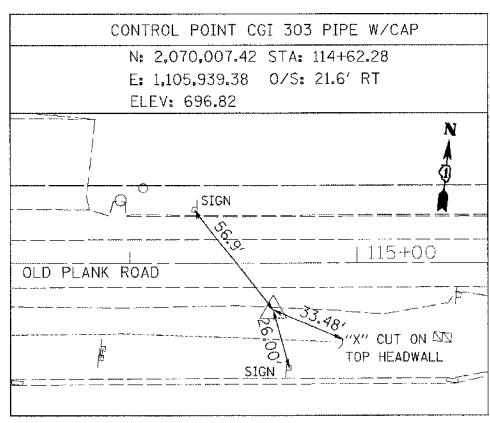
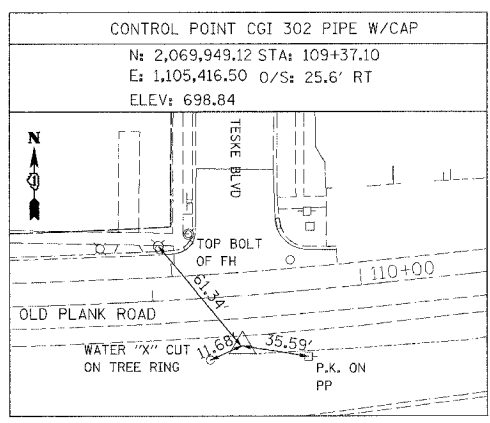
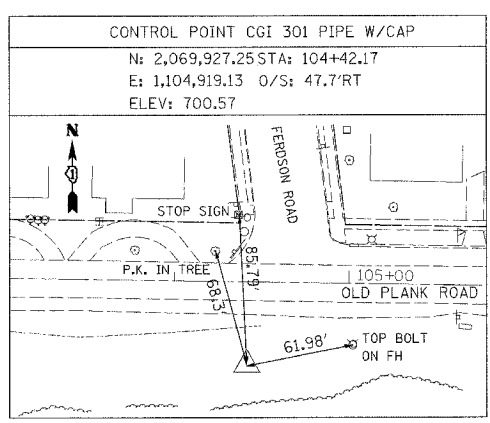
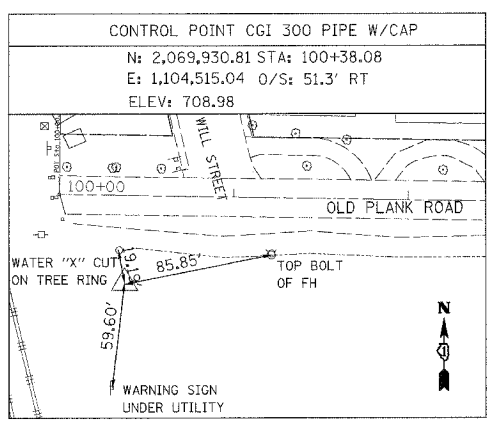
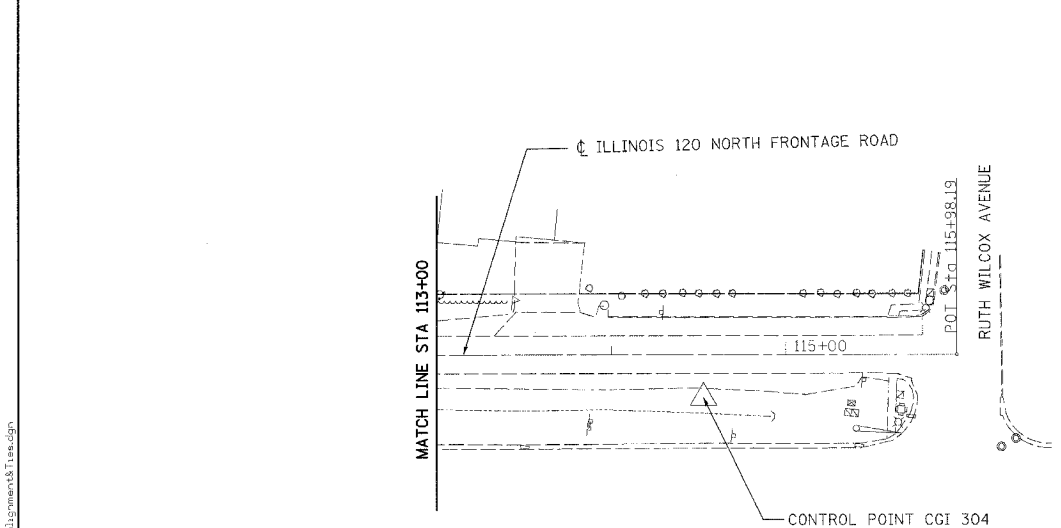


PROJECT COORDINATES

CENTERLINE ILLINOIS 120 NORTH FRONTAGE ROAD			
DESCRIPTION	NORTHING	EASTING	
P.O.T.	100+00.00	2,069,982.73	1,104,477.86
P.C.	107+41.81	2,069,969.65	1,105,219.56
P.T.	110+21.05	2,069,982.05	1,105,498.34
P.O.T.	115+98.19	2,070,043.39	1,106,072.22

EXIST. CURVE CL-1  
 PI STA. = 108+81.61  
 $\Delta = 7^\circ 06' 39''$  (LT)  
 $D = 2^\circ 32' 47''$   
 $R = 2,250.00'$   
 $T = 139.80'$   
 $L = 279.24'$   
 $E = 4.34'$   
 S.E. RUN = N/A  
 P.C. STA. = 107+41.81  
 P.T. STA. = 110+21.05  
 DESIGN SPEED = 30 MPH



FILE NAME = c:\p\c\13329\3329\_32\drawn\propose\plan\1329\_32-845-alignment18.dwg

**Ciorba Group, Inc.**  
 CONSULTING ENGINEERS  
 5507 North Cumberland Avenue, Suite 402  
 Chicago, Illinois 60656  
 Tel: 773.775.4009 Fax: 773.775.4014

USER NAME = jcoleman	DESIGNED - NT	REVISED -
PLOT SCALE = 50,000/1" = 1/2" IN.	DRAWN - NT	REVISED -
PLOT DATE = 6/3/2009	CHECKED - WBL	REVISED -
	DATE - MAY 2008	REVISED -

**STATE OF ILLINOIS**  
**DEPARTMENT OF TRANSPORTATION**

**ILLINOIS ROUTE 120 NORTH FRONTAGE ROAD**  
**WILL AVENUE TO KNIGHT AVENUE**  
**ALIGNMENT AND CONTROL POINTS**

F.A.P. RTE.	SECTION	COUNTY	TOTAL SHEETS	SHEET NO.
B80	12 RS-3	LAKE	21	4B
FED. ROAD DIST. NO. - ILLINOIS FED. AID PROJECT			CONTRACT NO. 60B45	

