

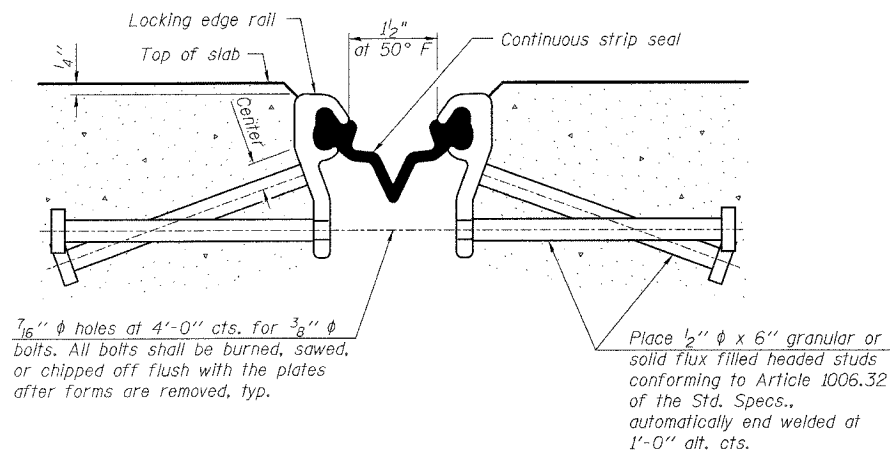
STATE OF ILLINOIS
DEPARTMENT OF TRANSPORTATION

ROUTE NO.	SECTION	COUNTY	TOTAL SHEETS	SHEET NO.
FAP 631	(III-N-1 B)	WILL	32	24
FED. ROAD DIST. NO. 7	ILLINOIS	FED. AID PROJECT-		

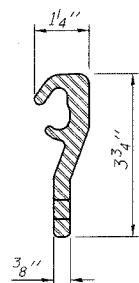
SHEET NO. 9

14 SHEETS

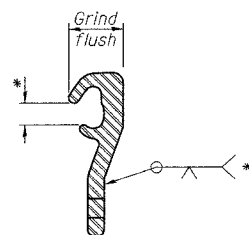
Contract # 60D85



**SECTION THRU STRIP SEAL JOINT
FOR OVERLAY OVER DECK BEAMS**



LOCKING EDGE RAIL



LOCKING EDGE RAIL SPLICE

* Omit weld at seal opening.

Notes:

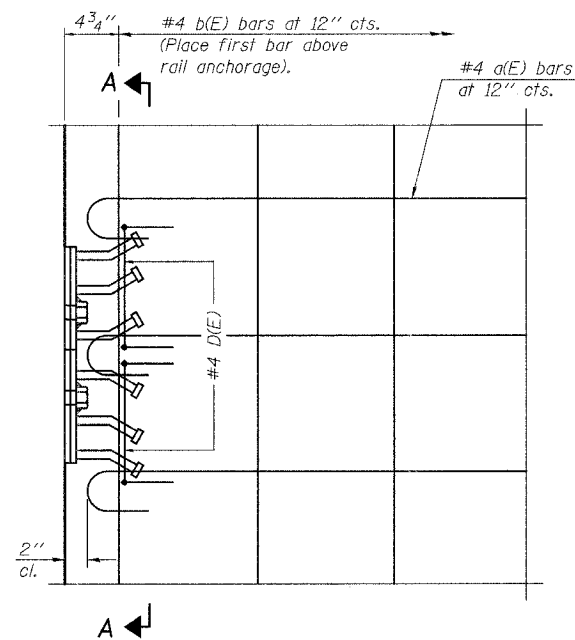
The strip seal shall be made continuous and shall have a minimum thickness of 1/4". The configuration of the strip seal shall match the configuration of the Locking Edge Rails.

The height and thickness of the Locking Edge Rails shown are minimum dimensions. The actual configuration of the Locking Edge Rails and matching strip seal may vary from manufacturer to manufacturer. Flanged edge rails will not be allowed.

The inside of the Locking Edge Rail groove shall be free of weld residue.

Locking Edge Rails may be spliced at slope discontinuities and stage construction joints.

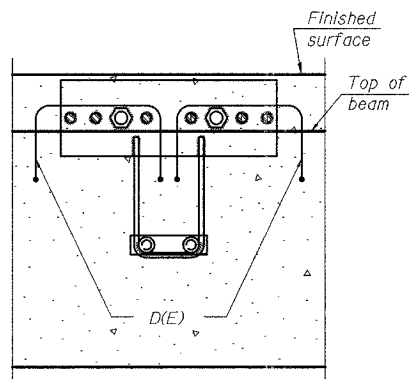
The manufacturer's recommended installation methods shall be followed.



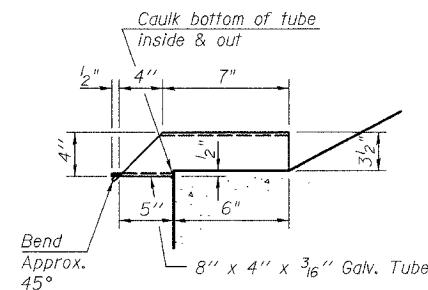
PLAN

Notes:

The rail anchorage shall be cast with the beam and the wearing surface shall be cast in the field. Formwork necessary for the wearing surface may be secured utilizing the bottom rail anchorage inserts and/or additional inserts cast into the beam. Drilling into the beam will not be permitted. For the rail posts location see sheet no. 8.

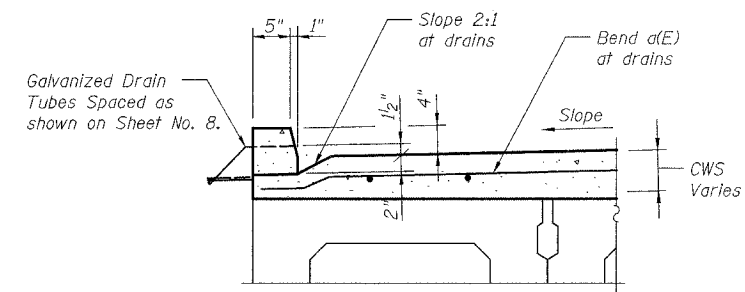


SECTION A-A



DRAIN DETAIL

Cost of drains is included with Concrete Wearing Surface



SECTION THRU CURB

Curbs shall be poured in the field.

BILL OF MATERIAL

Item	Unit	Quantity
Preformed Joint Strip Seal	Foot	68

SUPERSTRUCTURE DETAILS 2
FAP 631 (ILL. RTE. 102)
OVER FORKED CREEK OVERFLOW
SECTION III N-1 B
WILL COUNTY
STA. 821+12.20
S.N. 099-0169

DESIGNED	B. Sauter
CHECKED	E. Mroczek
DRAWN	R. Danley
CHECKED	B. Sauter



Ciorba Group, Inc.
CONSULTING ENGINEERS
5507 North Cumberland Avenue, Suite 402 Chicago, Illinois 60656
Tel. 773.775.4009 Fax 773.775.4014 Email chicago@ciorba.com

rdanley

5/15/2008

na:\proj\3329\3329_21\design\structural\cork\shh\3329_21_09_Superstructure_Details2.sht