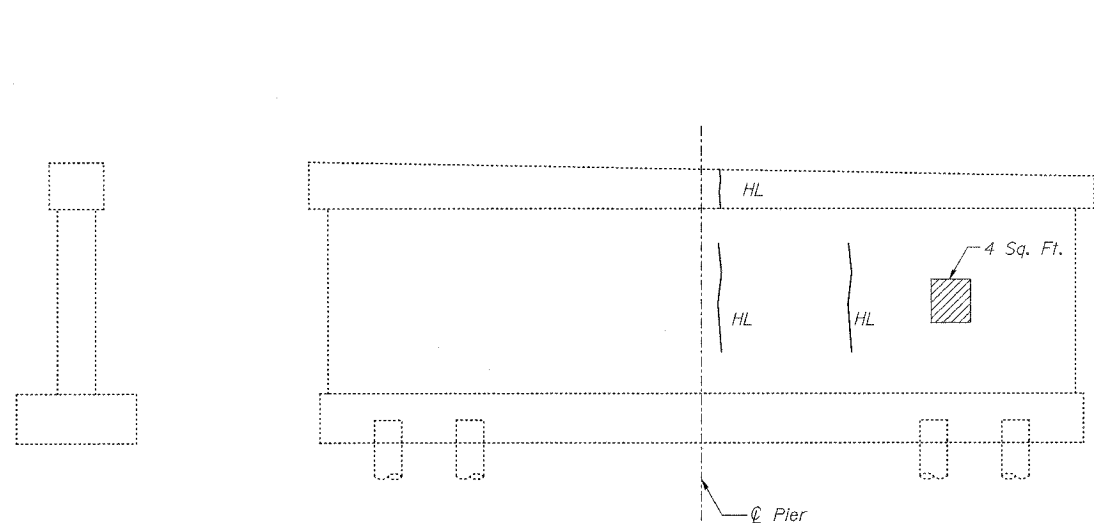


STATE OF ILLINOIS  
DEPARTMENT OF TRANSPORTATION

ROUTE NO.	SECTION	COUNTY	STATE	SHEET NO.
FAP 631	(III-N-1 B)	WILL	32	26
FED. ROAD DIST. NO. 7	ILLINOIS	FED. AID PROJECT		

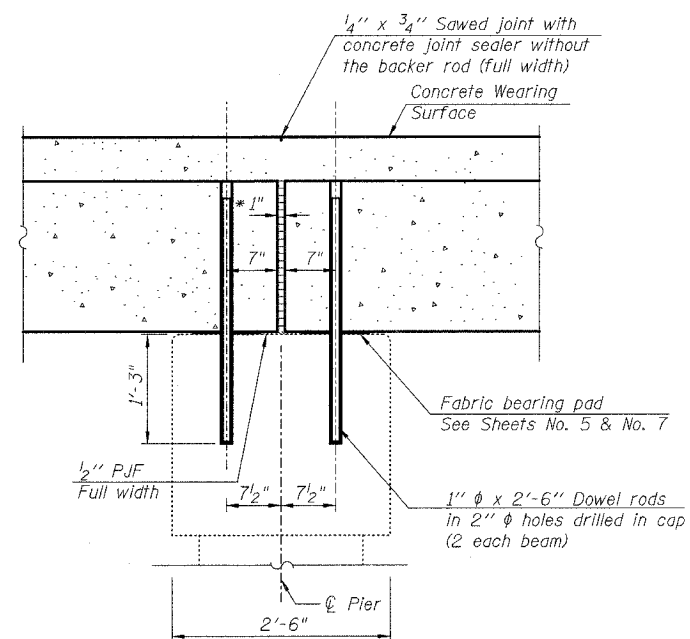
SHEET NO. 11  
14 SHEETS

Contract # 60D85



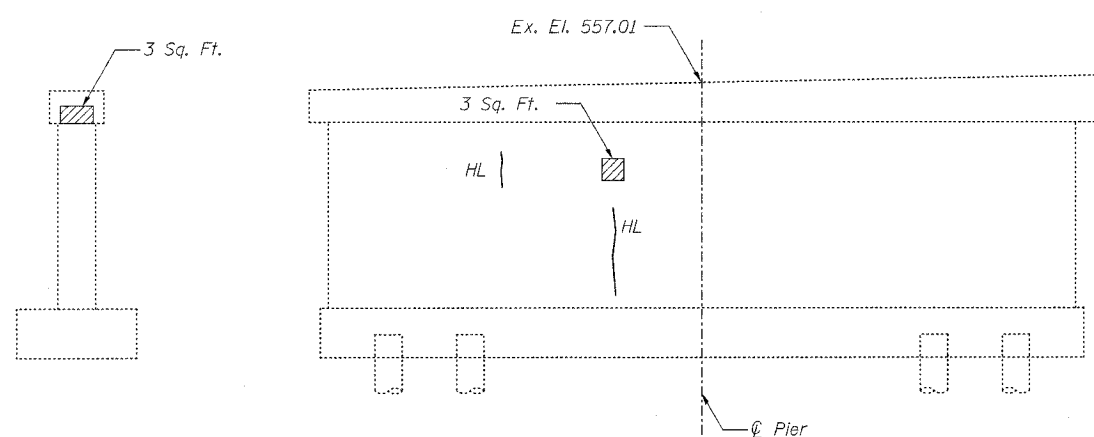
END VIEW

ELEVATION  
Looking Northwest



SECTION THRU FIX PIER

\* 1" Jt. shall be filled with non-shrink grout.  
1" dimension may vary to accommodate tolerance in beam lengths.  
After beams have been erected, holes shall be drilled into substructure and anchor dowels placed. Dowel holes shall be filled with non-shrink grout to top of beam and allowed to cure min. 24 hrs. prior to grouting the shear keys.



END VIEW

ELEVATION  
Looking Southeast

NOTE:

Repairs of the existing abutments shall include but not be limited to the areas shown. The actual areas to be determined by the engineer at the time of construction.

LEGEND

- Structural Repair of Concrete ( $\leq 5"$ )
- Hairline Crack

BILL OF MATERIAL

Item	Unit	Quantity
Structural Repair of Concrete (Depth Equal to or Less than 5")	Sq. Ft.	10

PIER REPAIRS  
FAP 631 (ILL. RTE. 102)  
OVER FORKED CREEK OVERFLOW  
SECTION III N-1 B  
WILL COUNTY  
STA. 821+12.20  
S.N. 099-0169

DESIGNED	B. Sauter
CHECKED	E. Mroczek
DRAWN	R. Danley
CHECKED	B. Sauter

**Ciorba Group, Inc.**  
CONSULTING ENGINEERS  
5507 North Cumberland Avenue, Suite 402 Chicago, Illinois 60656  
Tel. 773.775.4009 Fax 773.775.4014 Email chicago@ciorba.com

rdm/lej

5/15/2008

m:\proj\3329\3329\_21\design\structural\cadd\sheet\3329\_21\_11\_Pier.sht