

F.A.I. RTE.	SECTION	COUNTY	TOTAL SHEETS	SHEET NO.
90/94	*	COOK	25	1

STATE OF ILLINOIS
DEPARTMENT OF TRANSPORTATION
DIVISION OF HIGHWAYS

**PLANS FOR PROPOSED
FEDERAL AID HIGHWAY**

F.A.I. ROUTE 90/94 (DAN RYAN EXPRESSWAY)
SECTION (2122-921 PT 1 & 2122-921 PT 2) I-3

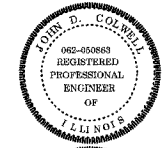
NORTHBOUND KNEE WALLS
(47TH ST TO 45TH ST)

COOK COUNTY
C-91-246-05

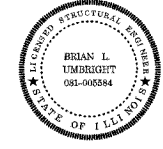
DESIGN NUMBER
D-91-417-01



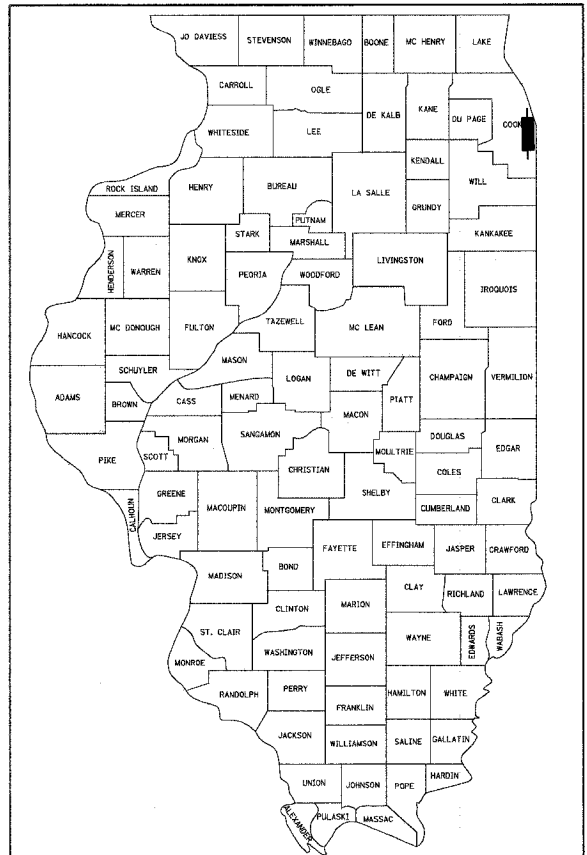
SIGNATURE *D. D. D. Moser*
DATE *Apr. 25, 2008*
EXPIRES *Nov. 30, 2009*



SIGNATURE *John D. Conwell*
DATE *Apr. 25, 2008*
EXPIRES *Nov. 30, 2009*



SIGNATURE *Brian L. Umbright*
DATE *April 25, 2008*
EXPIRES *Nov. 30, 2008*



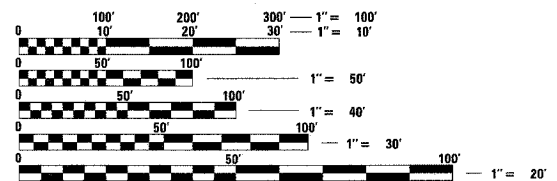
LOCATION OF SECTION INDICATED THUS: - [shaded area] -

PROJECT LOCATED IN CITY OF CHICAGO

DESIGN DESIGNATION

LA SALLE ST: 8275 (20) URBAN COLLECTOR

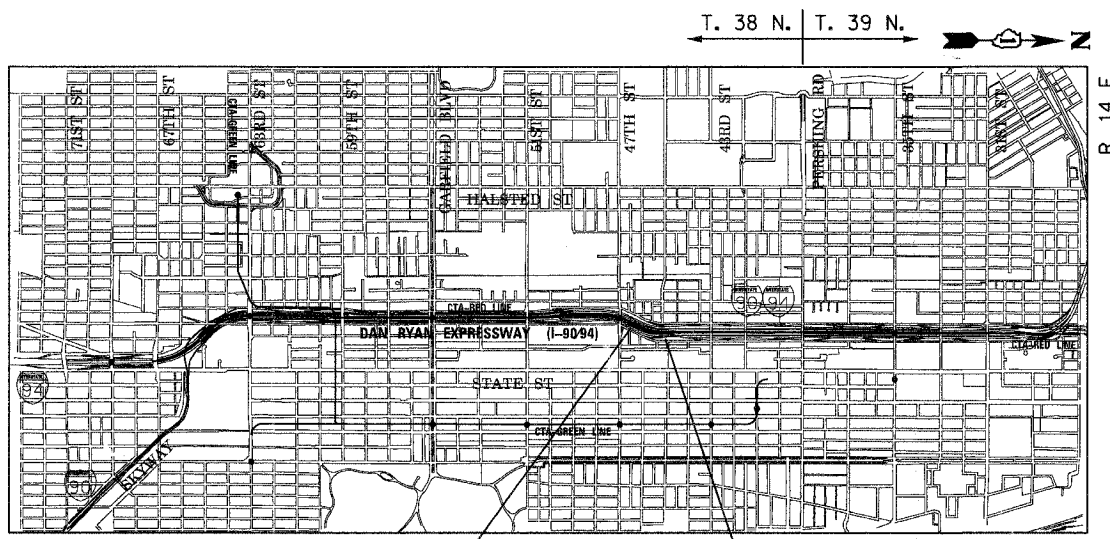
FRONTAGE ROAD:	ADT (2020)	DESIGN SPEED	POSTED SPEED
LA SALLE ST	15,000	30	25



FULL SIZE PLANS HAVE BEEN PREPARED USING STANDARD ENGINEERING SCALES. REDUCED SIZED PLANS WILL NOT CONFORM TO STANDARD SCALES. IN MAKING MEASUREMENTS ON REDUCED PLANS, THE ABOVE SCALES MAY BE USED.

BEFORE EXCAVATING CALL:
(J.U.L.I.E.) JOINT UTILITY LOCATION INFORMATION FOR EXCAVATION
1-800-892-0123 OR 811

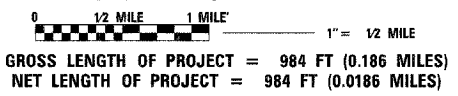
CONTRACT NO. 62988



PROJECT BEGINS
NB LA SALLE ST
STA 215 + 46

PROJECT ENDS
NB LA SALLE ST
STA 225 + 30

LOCATION MAP



STATE OF ILLINOIS
DEPARTMENT OF TRANSPORTATION
DIVISION OF HIGHWAYS

SUBMITTED *April 29, 2008*

Diane M. O'Keefe
DEPUTY DIRECTOR OF HIGHWAYS, REGION ENGINEER

June 27, 2008
Eric E. Harau
ENGINEER OF DESIGN AND ENVIRONMENT

June 27, 2008
Christine M. Reed
DIRECTOR OF HIGHWAYS, CHIEF ENGINEER

PRINTED BY THE AUTHORITY
OF THE STATE OF ILLINOIS

BOWMAN, BARRETT & ASSOCIATES INC.
CONSULTING ENGINEERS
Chicago, Illinois
312.228.0100
www.bbandainc.com

DISTRICT ONE DESIGN/CONSULTANT SERVICES PROJECT MANAGER
RAJENDRA SHAH (847) 705-4555

\\fs01\cadd\civil\31A\SHEETS\660_31ACOVER.dgn