

F.A.I. RTE.	SECTION	COUNTY	TOTAL SHEETS	SHEET NO.
90/94	•	COOK	32	1
62991				

**DESIGN NUMBER**  
D-91-417-01

**SIGNATURE** *D. D. Moore*  
**DATE** *Apr. 25, 2008*  
**EXPIRES** *Nov. 30, 2009*

**SIGNATURE** *John D. Coulwell*  
**DATE** *Apr. 25, 2008*  
**EXPIRES** *Nov. 30, 2009*

**SIGNATURE** *Brian L. Umbright*  
**DATE** *Apr. 25, 2008*  
**EXPIRES** *Nov. 30, 2009*

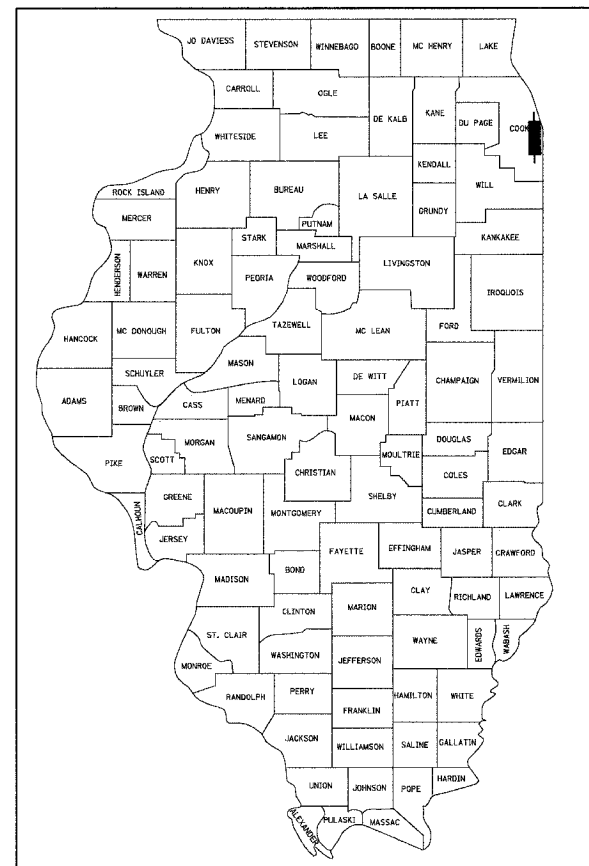
STATE OF ILLINOIS  
DEPARTMENT OF TRANSPORTATION  
DIVISION OF HIGHWAYS

**PLANS FOR PROPOSED  
FEDERAL AID HIGHWAY**

F.A.I. ROUTE 90/94 (DAN RYAN EXPRESSWAY)  
SECTION (2122-921 PT 2 & 2323.6-2P) I-6

NORTHBOUND KNEE WALLS  
(ROOT ST TO PERSHING RD)

COOK COUNTY  
C-91-249-05



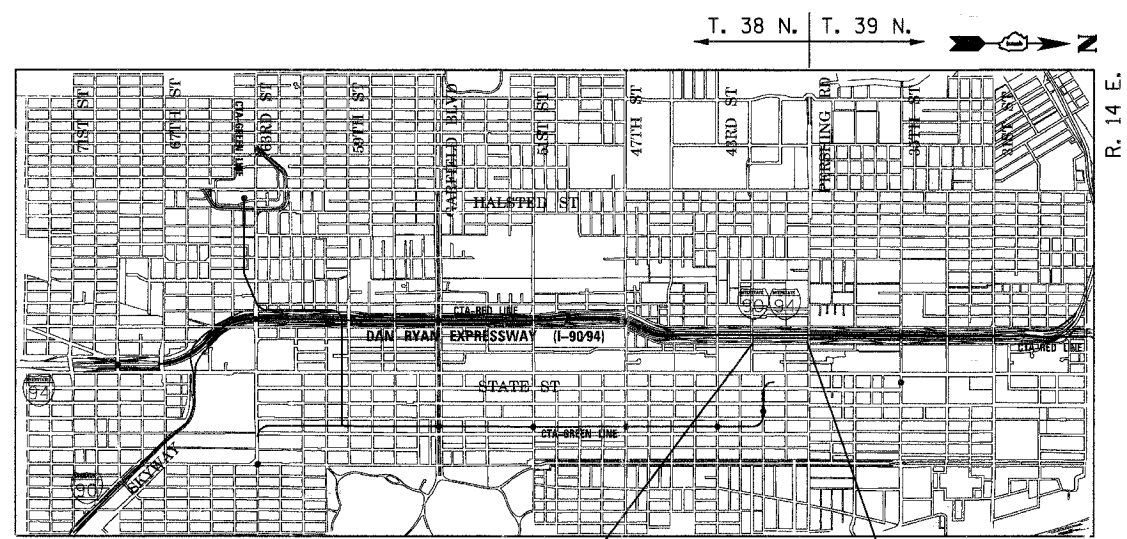
LOCATION OF SECTION INDICATED THUS: —

**PROJECT LOCATED IN CITY OF CHICAGO**

**DESIGN DESIGNATION**

LA SALLE ST: 8275 (20) URBAN COLLECTOR

FRONTAGE ROAD:	ADT (2020)	DESIGN SPEED	POSTED SPEED
LA SALLE ST	11,000	30	25

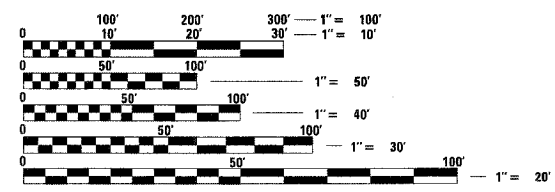


PROJECT BEGINS  
NB LA SALLE ST  
STA 248 + 53

PROJECT ENDS  
NB LA SALLE ST  
STA 264 + 17.41

**LOCATION MAP**

0 1/2 MILE 1 MILE 1" = 1/2 MILE  
GROSS LENGTH OF PROJECT = 1,564.41 FT (0.296 MILES)  
NET LENGTH OF PROJECT = 1,564.41 FT (0.296 MILES)



FULL SIZE PLANS HAVE BEEN PREPARED USING STANDARD ENGINEERING SCALES. REDUCED SIZED PLANS WILL NOT CONFORM TO STANDARD SCALES. IN MAKING MEASUREMENTS ON REDUCED PLANS, THE ABOVE SCALES MAY BE USED.

BEFORE EXCAVATING CALL:  
(J.U.L.I.E.) JOINT UTILITY LOCATION INFORMATION FOR EXCAVATION  
1-800-892-0123 OR 811

**CONTRACT NO. 62991**

STATE OF ILLINOIS  
DEPARTMENT OF TRANSPORTATION  
DIVISION OF HIGHWAYS

SUBMITTED *APRIL 29, 2008*  
*Dianna M. O'Keefe*  
DEPUTY DIRECTOR OF HIGHWAYS, REGION ENGINEER

*June 27, 2008*  
*Eric E. Stamm*  
ENGINEER OF DESIGN AND ENVIRONMENT

*June 27, 2008*  
*Christina M. Reed*  
DIRECTOR OF HIGHWAYS, CHIEF ENGINEER

**PRINTED BY THE AUTHORITY  
OF THE STATE OF ILLINOIS**

BOWMAN, BARRETT & ASSOCIATES INC.  
CONSULTING ENGINEERS  
Chicago, Illinois  
312.228.0100  
www.bbainc.com

DISTRICT ONE DESIGN/CONSULTANT SERVICES PROJECT MANAGER  
RAJENDRA SHAH (847) 705-4555