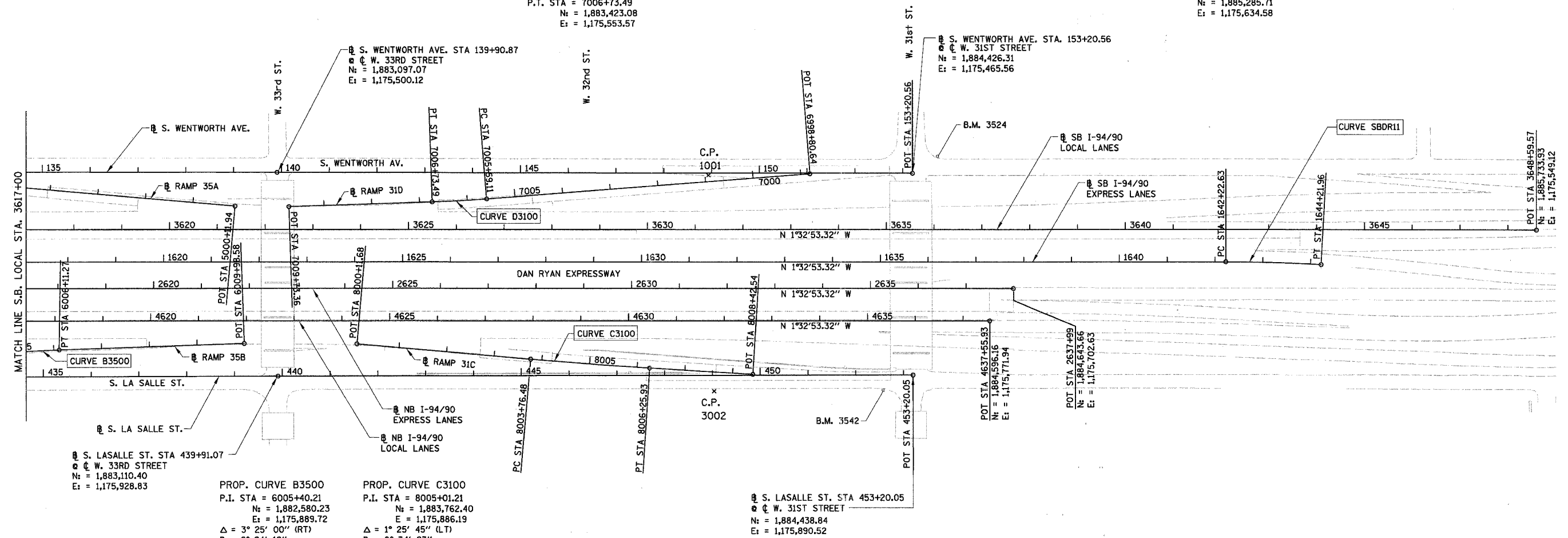


F.A.I.	SECTION	COUNTY	TOTAL SHEETS	SHEET NO.
94/90		COOK	32	8
STA.		TO STA.		
FED. ROAD DIST. NO.		ILLINOIS FED. AID PROJECT		

62991

PROP. CURVE D3100
 P.I. STA = 7006+16.31
 Nt = 1,883,480.18
 Et = 1,175,550.12
 Δ = 2° 35' 11" (RT)
 D = 2° 15' 40"
 R = 2,534.00'
 T = 57.20'
 L = 114.38'
 E = 0.65'
 e = 2.6%
 S.A. = STA 7005+43.11
 TO 7005+63.11
 S.R. = STA 7006+69.49
 TO 7006+89.49
 P.C. STA = 7005+59.11
 Nt = 1,883,537.06
 Et = 1,175,544.09
 P.T. STA = 7006+73.49
 Nt = 1,883,423.08
 Et = 1,175,553.57

PROP. CURVE SBDR11
 P.I. STA = 1643+22.32
 Nt = 1,885,186.06
 Et = 1,175,631.95
 Δ = 3° 03' 18" (RT)
 D = 1° 31' 57"
 R = 3,738.57'
 T = 99.69'
 L = 199.33'
 E = 1.33'
 e = ±2.5% (MATCH EXISTING)
 S.A. = STA 1641+95.99
 TO 1642+35.95
 S.R. = N/A
 P.C. STA = 1642+22.63
 Nt = 1,885,086.40
 Et = 1,175,634.65
 P.T. STA = 1644+21.96
 Nt = 1,885,285.71
 Et = 1,175,634.58



S. LASALLE ST. STA 439+91.07
 W. 33RD STREET
 Nt = 1,883,110.40
 Et = 1,175,928.83

PROP. CURVE B3500
 P.I. STA = 6005+40.21
 Nt = 1,882,580.23
 Et = 1,175,889.72
 Δ = 3° 25' 00" (RT)
 D = 2° 24' 12"
 R = 2,384.00'
 T = 71.10'
 L = 142.16'
 E = 1.06'
 e = 2.7%
 S.A. = STA 6004+53.11
 TO 6004+73.11
 S.R. = STA 6006+07.27
 TO 6006+27.27
 P.C. STA = 6004+69.11
 Nt = 1,882,509.63
 Et = 1,175,898.23
 P.T. STA = 6006+11.27
 Nt = 1,882,651.20
 Et = 1,175,895.43

PROP. CURVE C3100
 P.I. STA = 8005+01.21
 Nt = 1,883,762.40
 Et = 1,175,886.19
 Δ = 1° 25' 45" (LT)
 D = 0° 34' 23"
 R = 10,000.00'
 T = 124.73'
 L = 249.45'
 E = 0.78'
 P.C. STA = 8003+76.48
 Nt = 1,883,637.89
 Et = 1,175,878.68
 P.T. STA = 8006+25.93
 Nt = 1,883,887.05
 Et = 1,175,890.60

S. LASALLE ST. STA 453+20.05
 W. 31ST STREET
 Nt = 1,884,438.84
 Et = 1,175,890.52

- NOTES:**
- AVERAGE GRID TO GROUND CONVERSION
 FACTOR = 1.000010988654360
 - FOR BENCH MARK INFORMATION, SEE SHEET ALT-16 OF ALIGNMENT PLAN SHEETS.
 - FOR RAMP P.O.T. INFORMATION, SEE SHEET ALT-16 OF ALIGNMENT PLAN SHEETS.

ALT-04

BOWMAN, BARRETT & ASSOCIATES INC.
 CONSULTING ENGINEERS
 Chicago, Illinois
 312.228.0100
 www.bbandatinc.com

REVISIONS	
NAME	DATE

ILLINOIS DEPARTMENT OF TRANSPORTATION
 F.A.I. 94/90 (DAN RYAN EXPRESSWAY)
 NORTHBOUND KNEE WALLS (ROOT ST TO PERSHING RD)

ALIGNMENT PLAN

SCALE: 1"=100'
 DATE: 04/25/08
 DRAWN BY: JDC
 CHECKED BY: RS

6/25/08 7M