

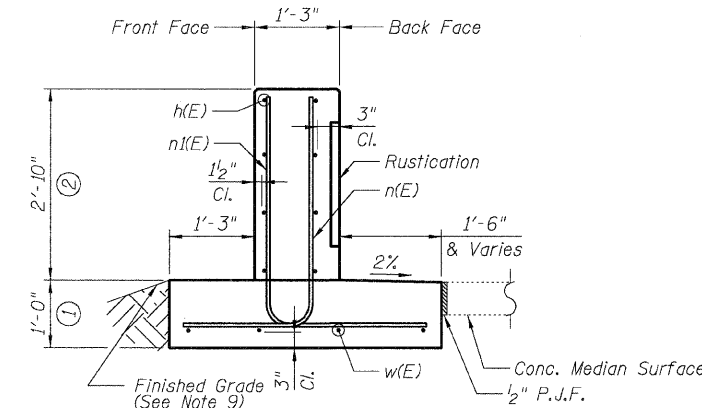
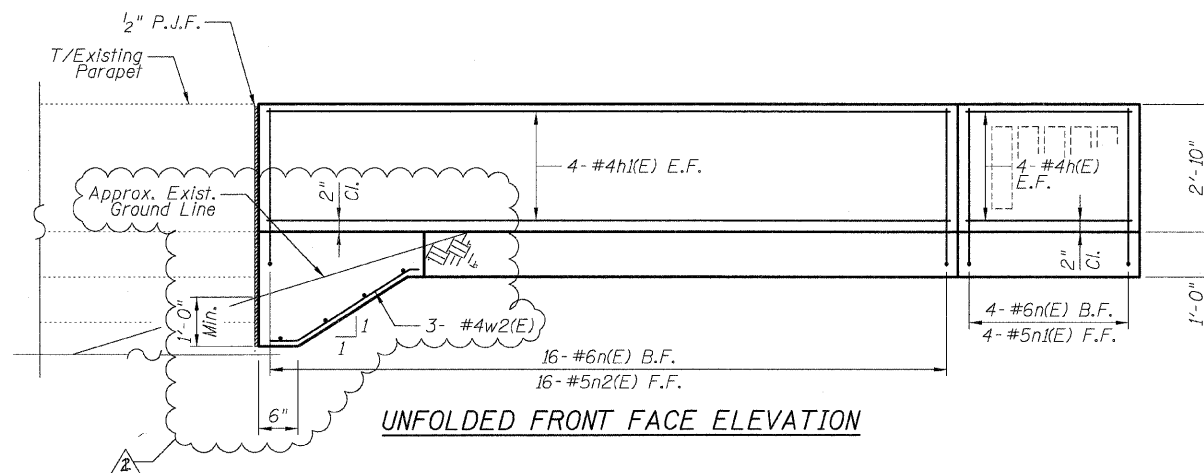
F.A.I.	SECTION	COUNTY	TOTAL SHEETS	SHEET NO.
94/90	*	COOK	25	14
STA.		TO STA.		
FED. ROAD DIST. NO.	ILLINOIS	FED. AID PROJECT		
62996				

DETAIL A REINFORCEMENT SCHEDULE AND BILL OF MATERIAL

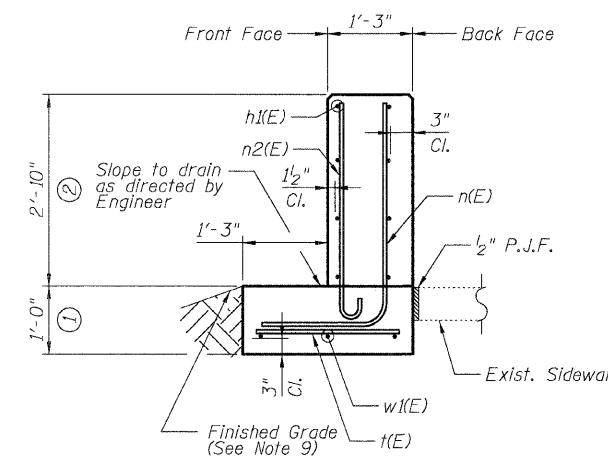
Bar	No.	Size	Length	Shape
h(E)	8	#4	3'-6"	—
h1(E)	8	#4	15'-1"	—
h2(E)	2	#4	4'-0"	—
n(E)	20	#6	5'-6"	L
n1(E)	4	#5	5'-10"	L
n2(E)	16	#5	4'-0"	C
r(E)	15	#6	2'-2"	—
w(E)	4	#4	2'-0"	—
w1(E)	3	#4	13'-2"	—
w2(E)	3	#4	3'-6"	—
Item	Unit	Qty.		
Concrete Structures	Cu. Yd.	2.1		
Concrete Superstructure	Cu. Yd.	2.5		
Reinforcement Bars, Epoxy Coated	Pound	450		
Rustication Finish	Sq. Ft.	8		
Protective Coat	Sq. Yd.	9		

NOTES:

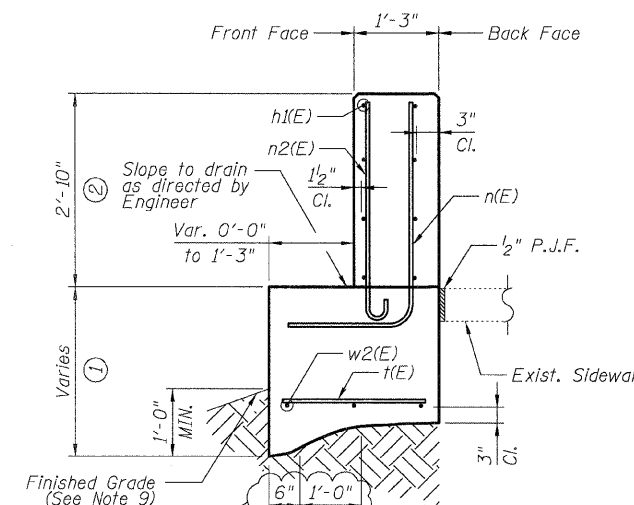
- All stations and offsets measured from S. Wentworth Ave. @.
- Back Face is face adjacent to Frontage Rd. and Front Face is face adjacent to Expressway.
- Concrete: f'c = 3500 psi
- Provide California Finish on top of foundation between stem and Frontage Road. See Roadway Details.
- At locations where Fluted Knee Wall abuts a rigid Structure, a 2" thick Preformed Expansion Joint Filler conforming to the shape of the Structure shall be installed between the Fluted Knee Wall and the Structure.
- Apply Protective Coat to top and back face of stem and top of Frontage Road side of foundation.
- For Fluted Knee Wall standard details, see Sheet SD-1
- B.F. = Back Face (Frontage Road Side)
F.F. = Front Face (Expressway Side)
E.F. = Each Face
- Shape finished grade as required to match existing conditions.
- P.J.F. included in cost of concrete structures.



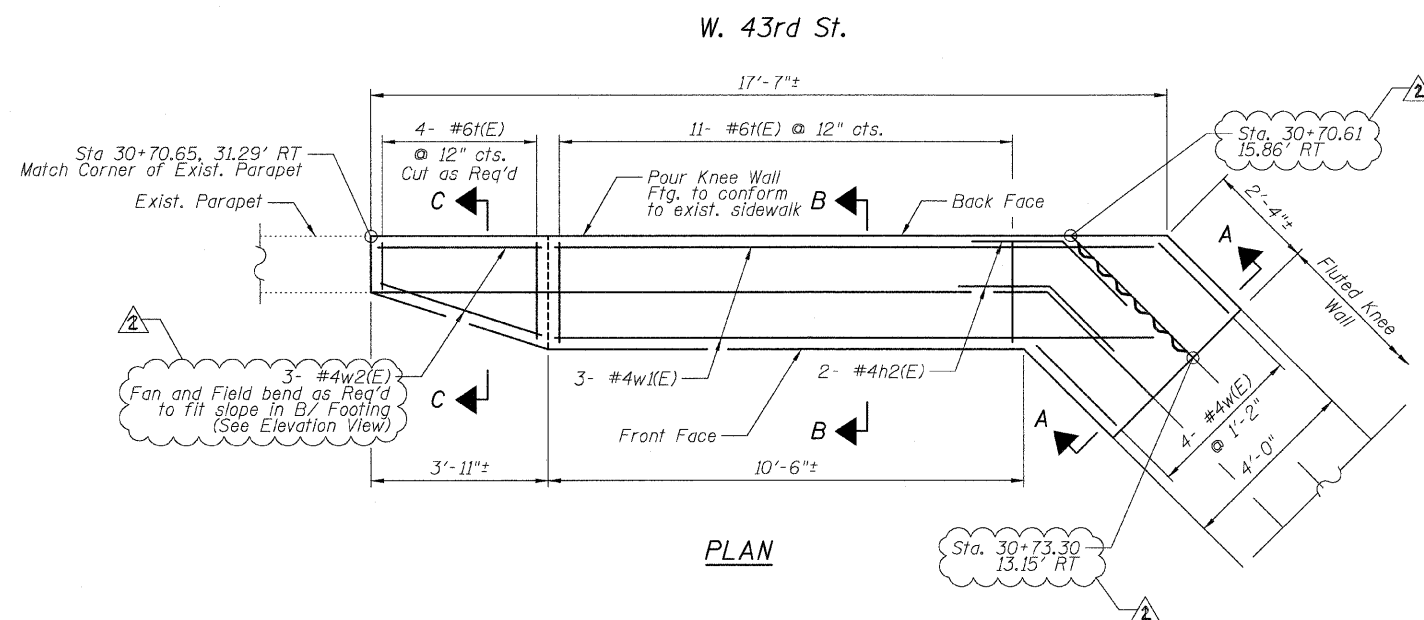
SECTION A-A



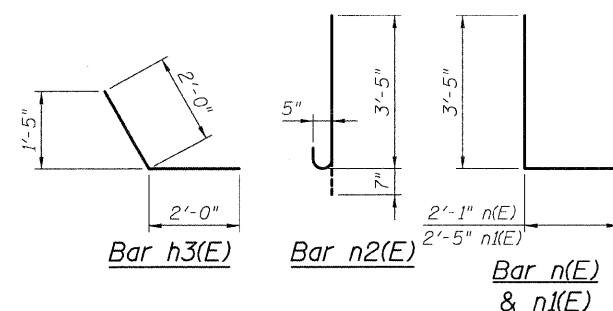
SECTION B-B



SECTION C-C



PLAN



BOWMAN, BARRETT & ASSOCIATES INC.
CONSULTING ENGINEERS
Chicago, Illinois
312.228.0100
www.bbainc.com

REVISIONS	
NAME	DATE
ADDENDUM 1	7-16-08

ILLINOIS DEPARTMENT OF TRANSPORTATION
F.A.I. 94/90 (DAN RYAN EXPRESSWAY)
SOUTHBOUND KNEE WALLS (43RD ST TO ROOT ST)

DETAIL A

SCALE: NTS
DATE: 04/25/08

DRAWN BY: TL
CHECKED BY: BLU

6/16/2008