

F.A.I.	SECTION	COUNTY	TOTAL SHEETS	SHEET NO.
94/90		COOK	32	7
STA.		TO STA.		
FED. ROAD DIST. NO.		ILLINOIS FED. AID PROJECT		

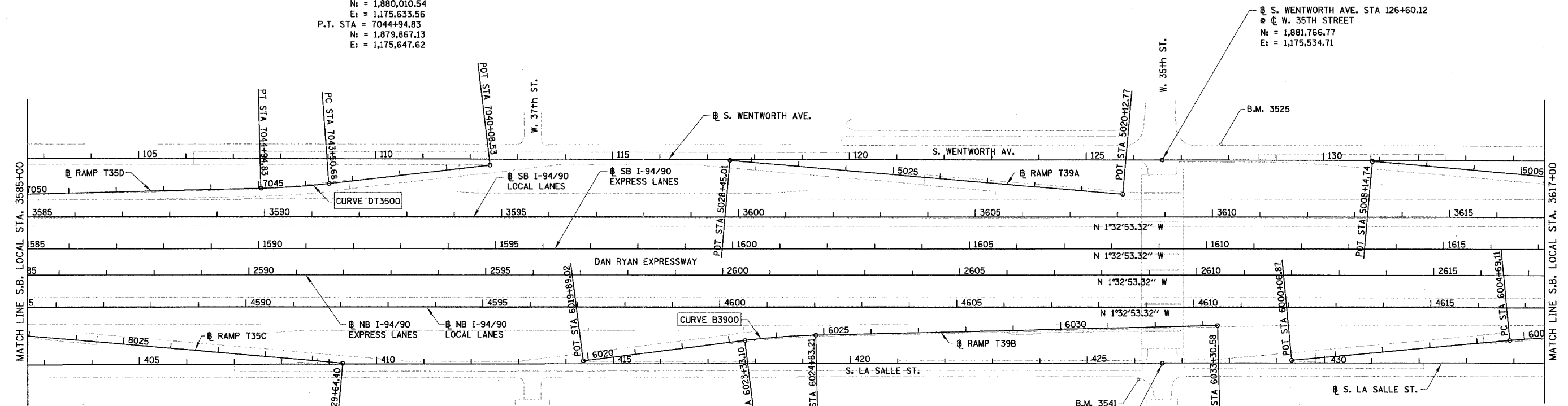
62997

PROP. CURVE DT3500
P.I. STA = 7044+22.81
N = 1,879,939.16
E = 1,175,643.87
Δ = 5° 14' 38" (RT)
D = 3° 38' 16"
R = 1,575.00'
T = 72.13'
L = 144.15'
E = 1.65'
e = 3.6%
S.A. = STA 7043+14.68
TO 7043+59.68
S.R. = STA 7044+85.83
TO 7045+30.83
P.C. STA = 7043+50.68
N = 1,880,010.54
E = 1,175,633.56
P.T. STA = 7044+94.83
N = 1,879,867.13
E = 1,175,647.62

PROP. CURVE B3900
P.I. STA = 6024+08.22
N = 1,880,970.99
E = 1,175,932.00
Δ = 5° 47' 44" (RT)
D = 3° 51' 39"
R = 1,484.00'
T = 75.12'
L = 150.11'
E = 1.90'
e = 3.7%
S.A. = STA 6022+97.10
TO 6023+42.10
S.R. = STA 6024+74.21
TO 6025+19.21
P.C. STA = 6023+33.10
N = 1,880,896.76
E = 1,175,943.46
P.T. STA = 6024+83.21
N = 1,881,046.01
E = 1,175,928.09

S. LASALLE ST. STA 426+58.57
W. 35TH STREET
N = 1,881,778.46
E = 1,175,967.25

S. WENTWORTH AVE. STA 126+60.12
W. 35TH STREET
N = 1,881,766.77
E = 1,175,534.71



- NOTES:**
- AVERAGE GRID TO GROUND CONVERSION
FACTOR = 1.000010988654360
 - FOR BENCH MARK INFORMATION, SEE SHEET ALT-16 OF ALIGNMENT PLAN SHEETS.
 - FOR RAMP P.O.T. INFORMATION, SEE SHEET ALT-16 OF ALIGNMENT PLAN SHEETS.

ALT-03

REVISIONS	
NAME	DATE

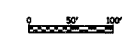
ILLINOIS DEPARTMENT OF TRANSPORTATION
F.A.I. 94/90 (DAN RYAN EXPRESSWAY)
SOUTHBOUND KNEE WALLS (ROOT ST TO PERSHING RD)

ALIGNMENT PLAN

SCALE: 1"=100'
DATE: 04/25/08

DRAWN BY: JDC
CHECKED BY: RS

BOWMAN, BARRETT & ASSOCIATES INC.
CONSULTING ENGINEERS
Chicago, Illinois
312.228.0100
www.bbainc.com



7/24/2008 7:04:27 PM