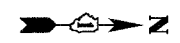
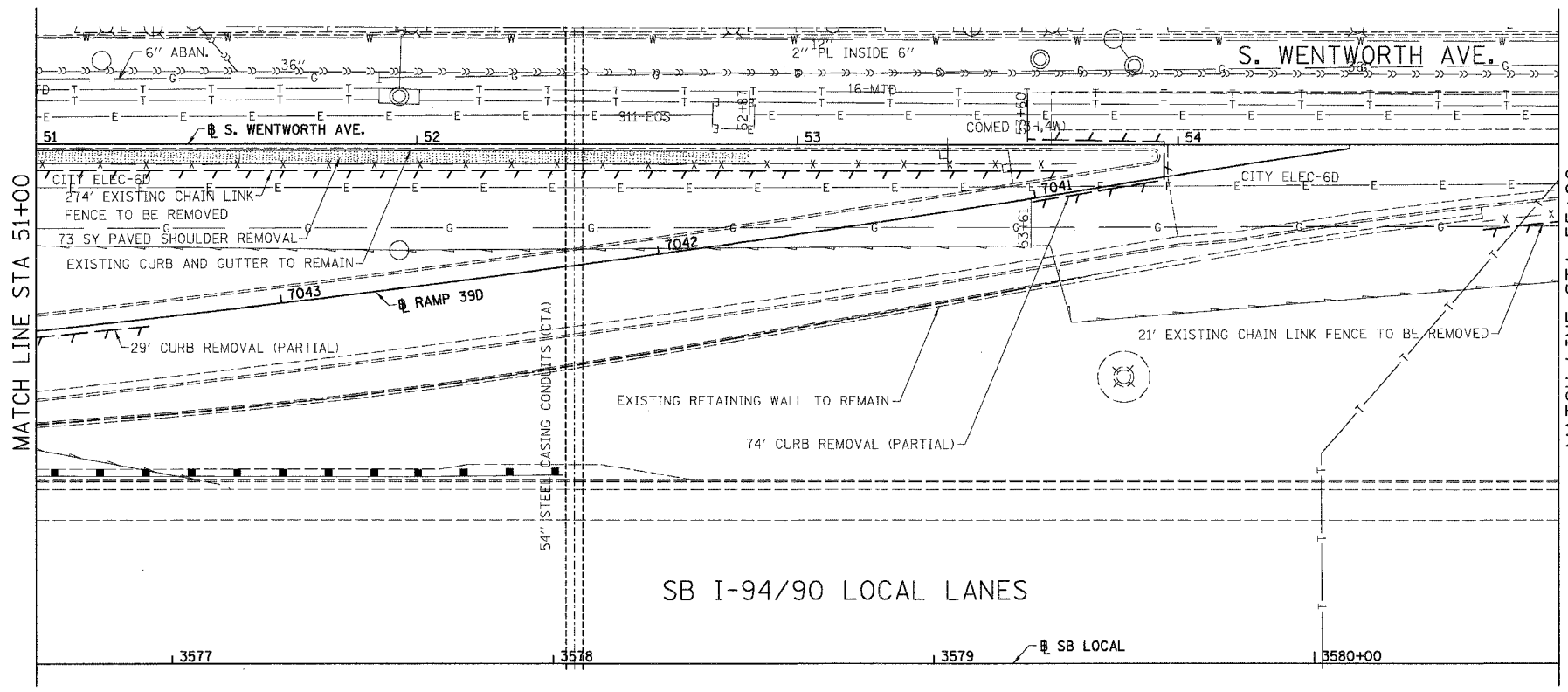
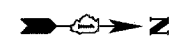
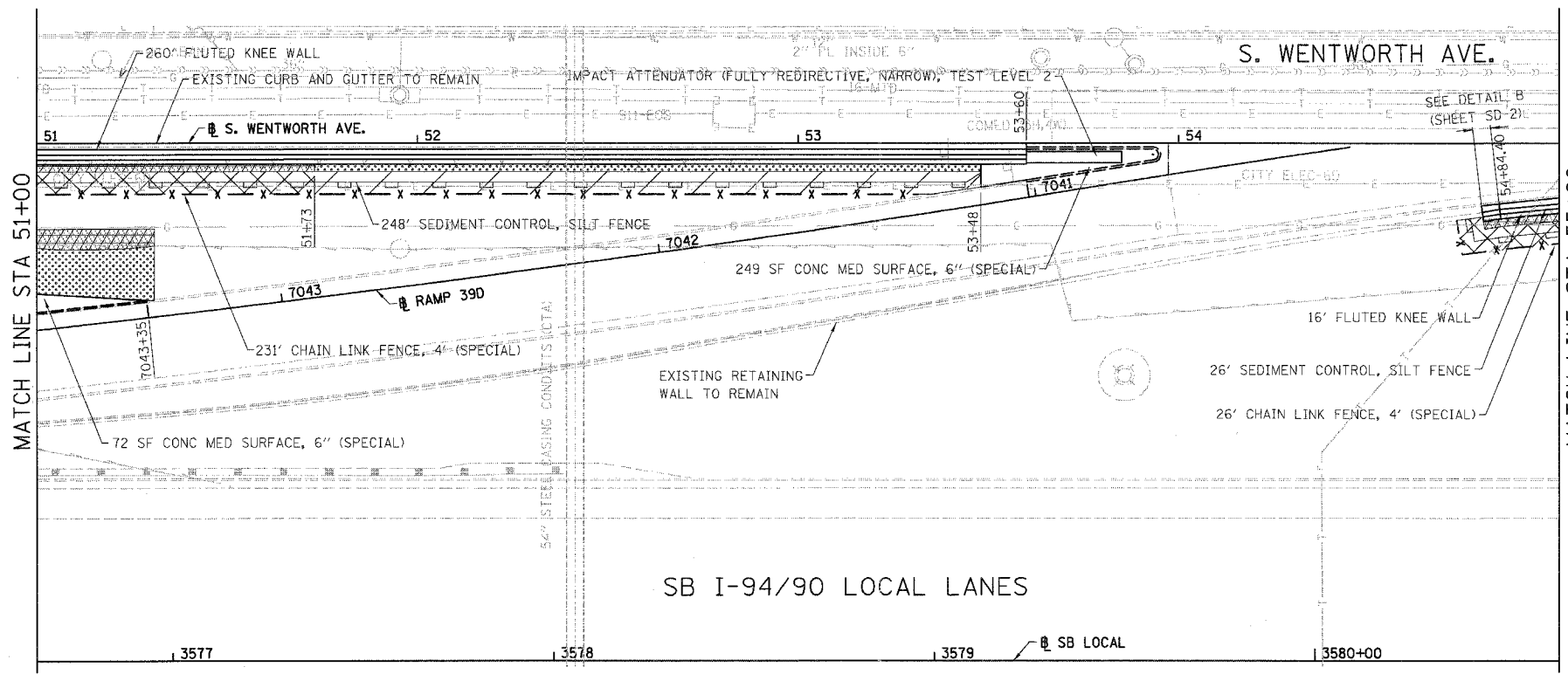


F.A.I.	SECTION	COUNTY	TOTAL SHEETS	SHEET NO.
94/90		COOK	32	13
STA.		TO STA.		
FED. ROAD DIST. NO.		ILLINOIS	FED. AID PROJECT	
		62997		



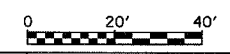
- LEGEND:
- PAVED SHOULDER REMOVAL
  - LINEAR REMOVALS

EXISTING CONDITIONS AND REMOVAL  
PROPOSED IMPROVEMENTS



- LEGEND:
- SEEDING, CLASS 2A  
EROSION CONTROL BLANKET
  - SEEDING, CLASS 4 (MODIFIED)  
SEEDING CLASS 5A (MODIFIED)  
EROSION CONTROL BLANKET
  - TOPSOIL FURNISH AND PLACE, 4"  
SEEDING, CLASS 2A  
EROSION CONTROL BLANKET
  - TOPSOIL FURNISH AND PLACE, 12"  
SEEDING, CLASS 4 (MODIFIED)  
SEEDING, CLASS 5A (MODIFIED)  
EROSION CONTROL BLANKET

- NOTES:
- SEE STRUCTURAL DETAIL FOR FLUTED KNEE WALL DETAILS.
  - ALL POINT CALLOUTS ARE TAKEN AT THE EDGE OF THE KNEE WALL BASE.



REVISIONS	
NAME	DATE

ILLINOIS DEPARTMENT OF TRANSPORTATION  
F.A.I. 94/90 (DAN RYAN EXPRESSWAY)  
SOUTHBOUND KNEE WALLS (ROOT ST TO PERSHING RD)

EXISTING AND PROPOSED  
KNEE WALL PLANS

SCALE: 1"=20'  
DATE: 04/25/08

DRAWN BY: JDC  
CHECKED BY: DDM

BOWMAN, BARRETT & ASSOCIATES INC.  
CONSULTING ENGINEERS  
Chicago, Illinois  
312.228.0100  
www.bbainc.com

7/24/2008 7:04:28 PM