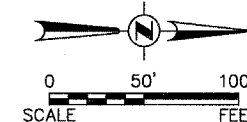
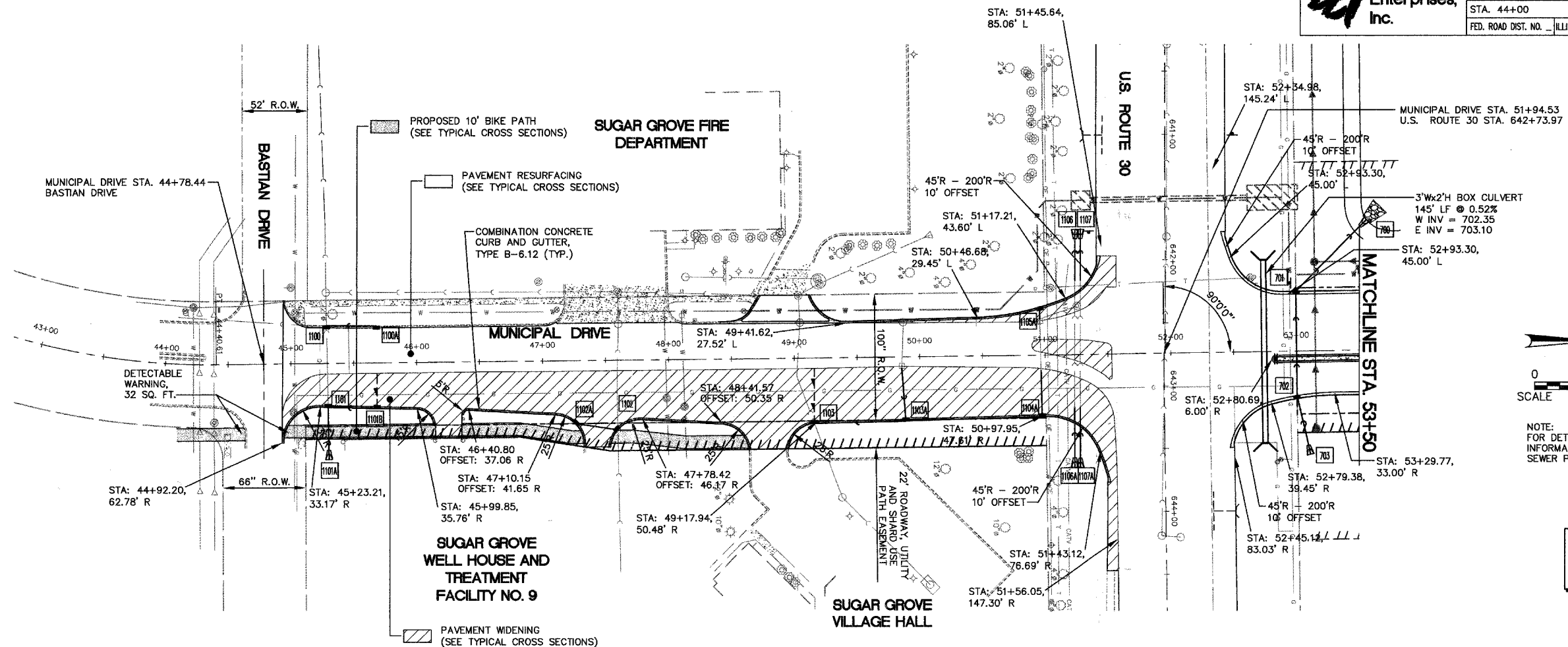


**Engineering Enterprises, Inc.**

F.A. RTE.	SECTION	COUNTY	TOTAL SHEETS	SHEET NO.
N/A	06-00017-00-PV	KANE	232	47
STA. 44+00 TO STA. 53+50				
FED. ROAD DIST. NO. ILLINOIS		FED. AID PROJECT		

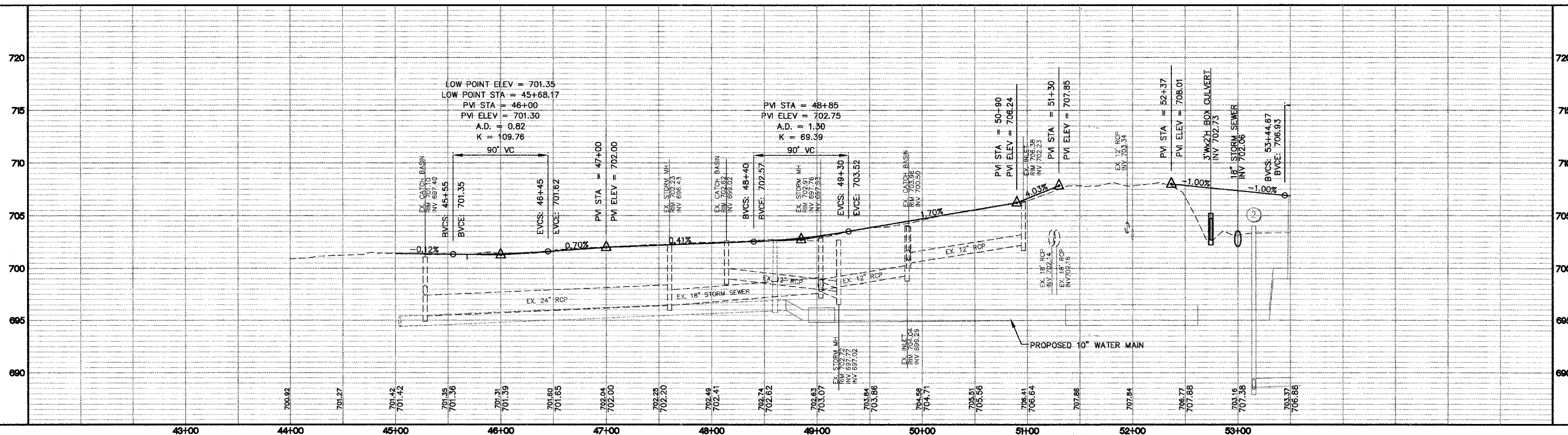
PLAN	DATE
SURVEYED	
ALIGNED	
CHECKED	
BY	
NO.	



NOTE: FOR DETAILED STORM SEWER INFORMATION SEE STORM SEWER PLAN SHEETS.

SCALE:  
 HORIZ. 1" = 50'  
 VERT. 1" = 5'

PROFILE	DATE
SURVEYED	
PLOTTED	
CHECKED	
BY	
NO.	



**MUNICIPAL DRIVE PLAN & PROFILE**