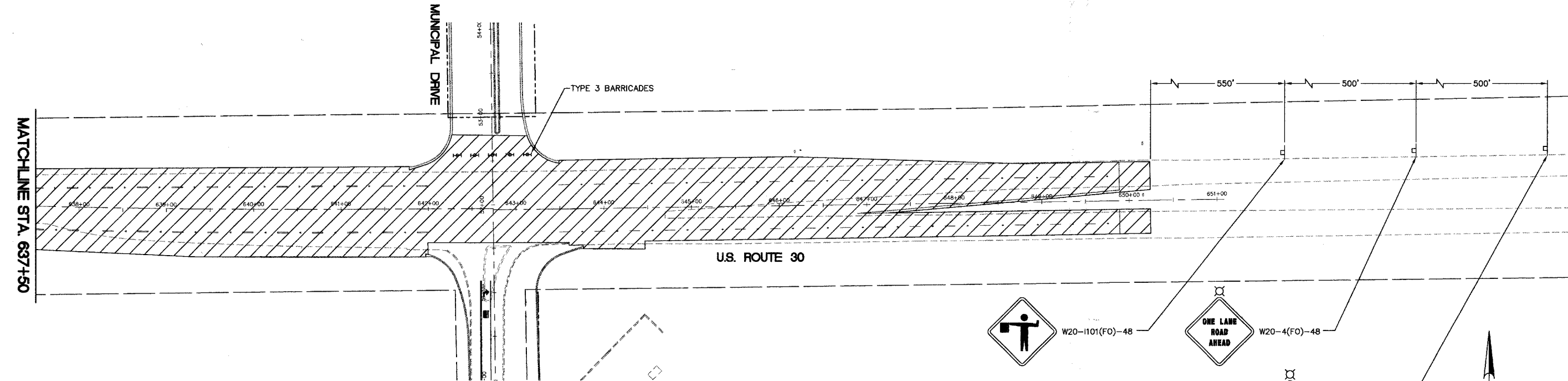
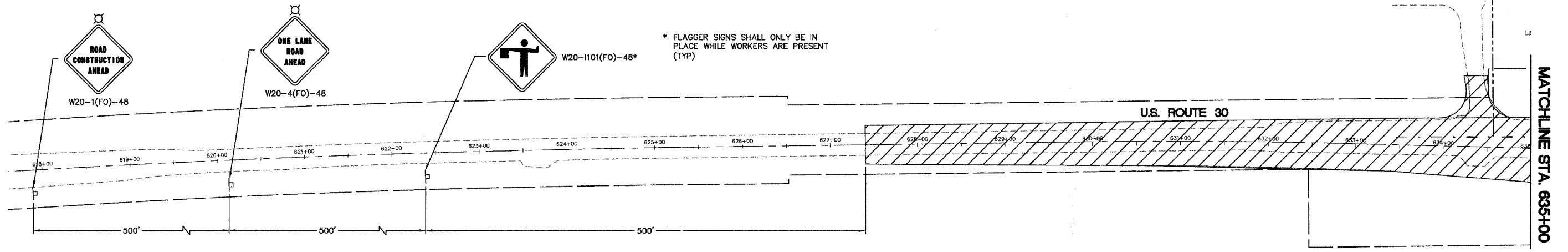




F.A. RTE.	SECTION	COUNTY	TOTAL SHEETS	SHEET NO.
N/A	06-00017-00-PV	KANE	232	64
STA.		TO STA.		
FED. ROAD DIST. NO.		ILLINOIS FED. AID PROJECT		

PLAN	DATE
SURVEYED	BY
PLOTTED	
CHECKED	
NOTE BOOK NO.	
FILE NAME	

PROFILE	DATE
SURVEYED	BY
PLOTTED	
CHECKED	
NOTE BOOK NO.	
FILE NAME	



- WORK AREA
- TRAFFIC CONTROL DRUM W/ STEADY BURN AMBER LIGHT
- SIGN
- TYPE 3 BARRICADE
- DIRECTIONAL INDICATOR BARRICADE
- ARROW BOARD

- WORK ITEMS**
- MILL AND OVERLAY U.S. ROUTE 30.
 - PERMANENT PAVEMENT MARKINGS.

STAGE 3: U.S. ROUTE 30 AND MUNICIPAL DRIVE

- NOTES:**
- SEE IDOT STANDARD 701606-05 AND 701306-01-01 FOR DETAILS OF DAYTIME LANE CLOSURES. FLAGGERS WILL BE REQUIRED FOR CONSTRUCTION IN THIS AREA. SEE IDOT STANDARD 701306-01 AND 701606-05 FOR FLAGGER AND SIGNAGE LOCATION
 - VILLAGE HALL PARKING AREAS TO REMAIN FULLY ACCESSIBLE DURING WORKING HOURS. FIRE DEPARTMENT DRIVES TO REMAIN FULLY ACCESSIBLE AT ALL TIMES. SURFACE REMOVAL AND PAVING OPERATIONS TO BE COORDINATED WITH THE VILLAGE OR ITS REPRESENTATIVES AT LEAST 48 HOURS IN ADVANCE OF SAID OPERATIONS.
 - PAVEMENT JOINTS ARE TO BE CONSISTENT WITH FUTURE LANE LINES PER ARTICLE 406.06(g) OF THE STANDARD SPECIFICATIONS.
 - BUTT JOINTS SHALL NOT REMAIN EXPOSED TO TRAFFIC OVER NIGHT. MILLED OR UNFINISHED SURFACES WILL REQUIRE A 40(H) : 1(V) TEMPORARY RAMP PER ARTICLE 406.08 OF THE STANDARD SPECIFICATIONS.
 - SWITCH "RIGHT LANE CLOSED 1/2 MILE" SIGNS FROM STAGE 2 TO W20-4(FO)-48 "ONE LANE ROAD AHEAD" SIGN. MAINTAIN "ROAD CONSTRUCTION AHEAD" SIGNS FROM STAGE 2.
 - TO BE COMPLETED CONCURRENTLY WITH MUNICIPAL DRIVE OVERLAY / STAGE 3.

REVISIONS	
NAME	DATE

ILLINOIS DEPARTMENT OF TRANSPORTATION

U.S. ROUTE 30 AND MUNICIPAL DRIVE TRAFFIC CONTROL AND STAGING PLAN

SCALE: 1" = 60'
DATE: 02/07/08

DRAWN BY:
CHECKED BY: WBR

