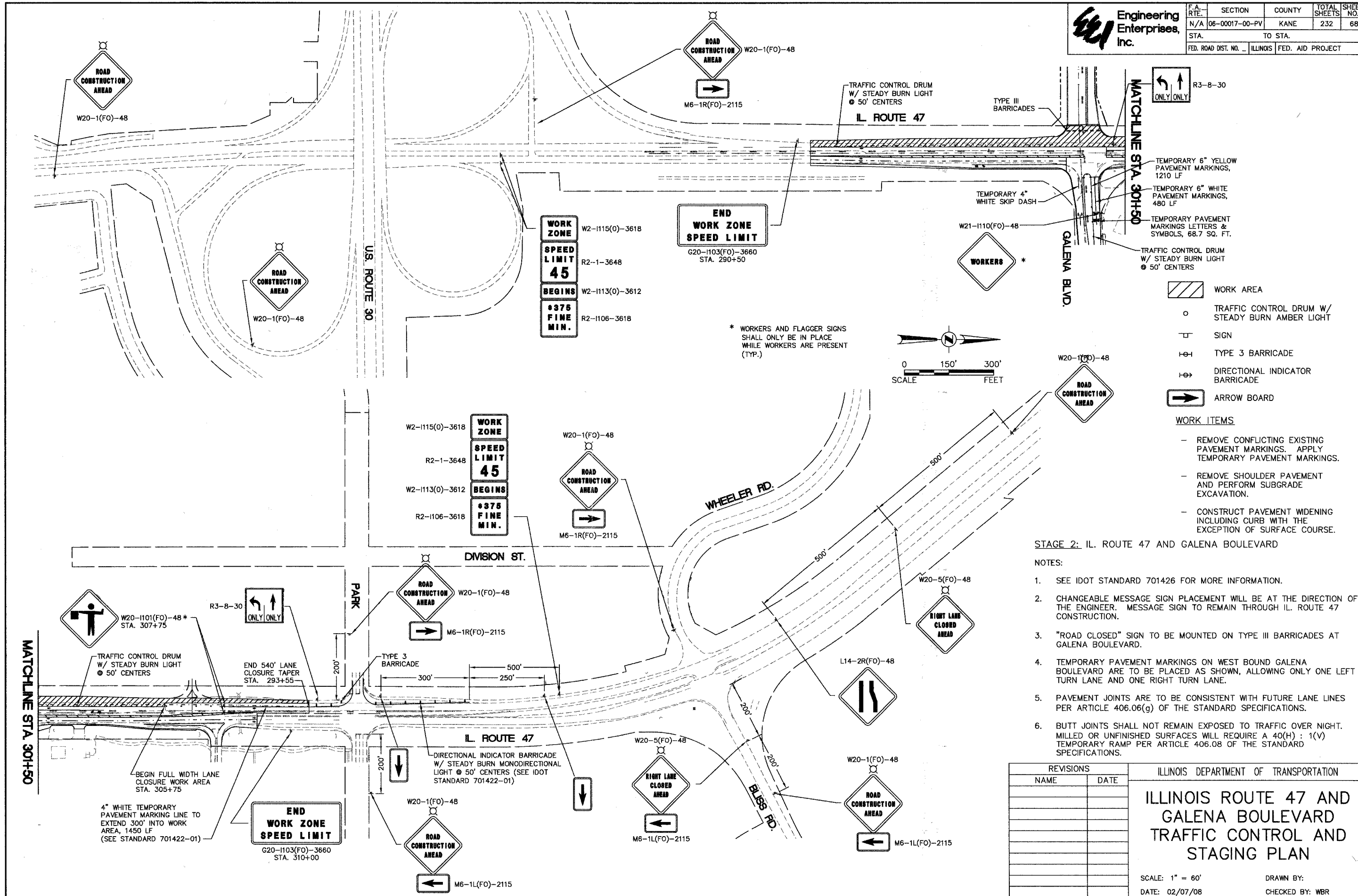


Engineering Enterprises, Inc.

F.A. SECTION COUNTY TOTAL SHEETS SHEET NO.	N/A 06-00017-00-PV KANE 232 68
STA. TO STA.	
FED. ROAD DIST. NO. ILLINOIS FED. AID PROJECT	

DATE	BY
REVISIONS	
PLANNED	
DESIGNED	
CHECKED	
DATE	BY
REVISIONS	
PROFILE	
PLANNED	
DESIGNED	
CHECKED	
DATE	BY
REVISIONS	

DATE	BY
REVISIONS	
PROFILE	
PLANNED	
DESIGNED	
CHECKED	
DATE	BY
REVISIONS	



TEMPORARY 6" YELLOW PAVEMENT MARKINGS, 1210 LF
 TEMPORARY 6" WHITE PAVEMENT MARKINGS, 480 LF
 TEMPORARY PAVEMENT MARKINGS LETTERS & SYMBOLS, 68.7 SQ. FT.
 TRAFFIC CONTROL DRUM W/ STEADY BURN LIGHT @ 50' CENTERS

- WORK AREA
- TRAFFIC CONTROL DRUM W/ STEADY BURN AMBER LIGHT
- SIGN
- TYPE 3 BARRICADE
- DIRECTIONAL INDICATOR BARRICADE
- ARROW BOARD

- WORK ITEMS**
- REMOVE CONFLICTING EXISTING PAVEMENT MARKINGS. APPLY TEMPORARY PAVEMENT MARKINGS.
 - REMOVE SHOULDER PAVEMENT AND PERFORM SUBGRADE EXCAVATION.
 - CONSTRUCT PAVEMENT WIDENING INCLUDING CURB WITH THE EXCEPTION OF SURFACE COURSE.

- STAGE 2: IL. ROUTE 47 AND GALENA BOULEVARD**
- NOTES:**
- SEE IDOT STANDARD 701426 FOR MORE INFORMATION.
 - CHANGEABLE MESSAGE SIGN PLACEMENT WILL BE AT THE DIRECTION OF THE ENGINEER. MESSAGE SIGN TO REMAIN THROUGH IL. ROUTE 47 CONSTRUCTION.
 - "ROAD CLOSED" SIGN TO BE MOUNTED ON TYPE III BARRICADES AT GALENA BOULEVARD.
 - TEMPORARY PAVEMENT MARKINGS ON WEST BOUND GALENA BOULEVARD ARE TO BE PLACED AS SHOWN, ALLOWING ONLY ONE LEFT TURN LANE AND ONE RIGHT TURN LANE.
 - PAVEMENT JOINTS ARE TO BE CONSISTENT WITH FUTURE LANE LINES PER ARTICLE 406.06(g) OF THE STANDARD SPECIFICATIONS.
 - BUTT JOINTS SHALL NOT REMAIN EXPOSED TO TRAFFIC OVER NIGHT. MILLED OR UNFINISHED SURFACES WILL REQUIRE A 40(H) : 1(V) TEMPORARY RAMP PER ARTICLE 406.08 OF THE STANDARD SPECIFICATIONS.

REVISIONS	
NAME	DATE

ILLINOIS DEPARTMENT OF TRANSPORTATION

ILLINOIS ROUTE 47 AND GALENA BOULEVARD TRAFFIC CONTROL AND STAGING PLAN

SCALE: 1" = 60'
 DATE: 02/07/08
 DRAWN BY:
 CHECKED BY: WBR