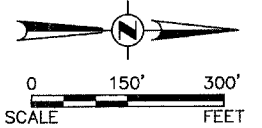




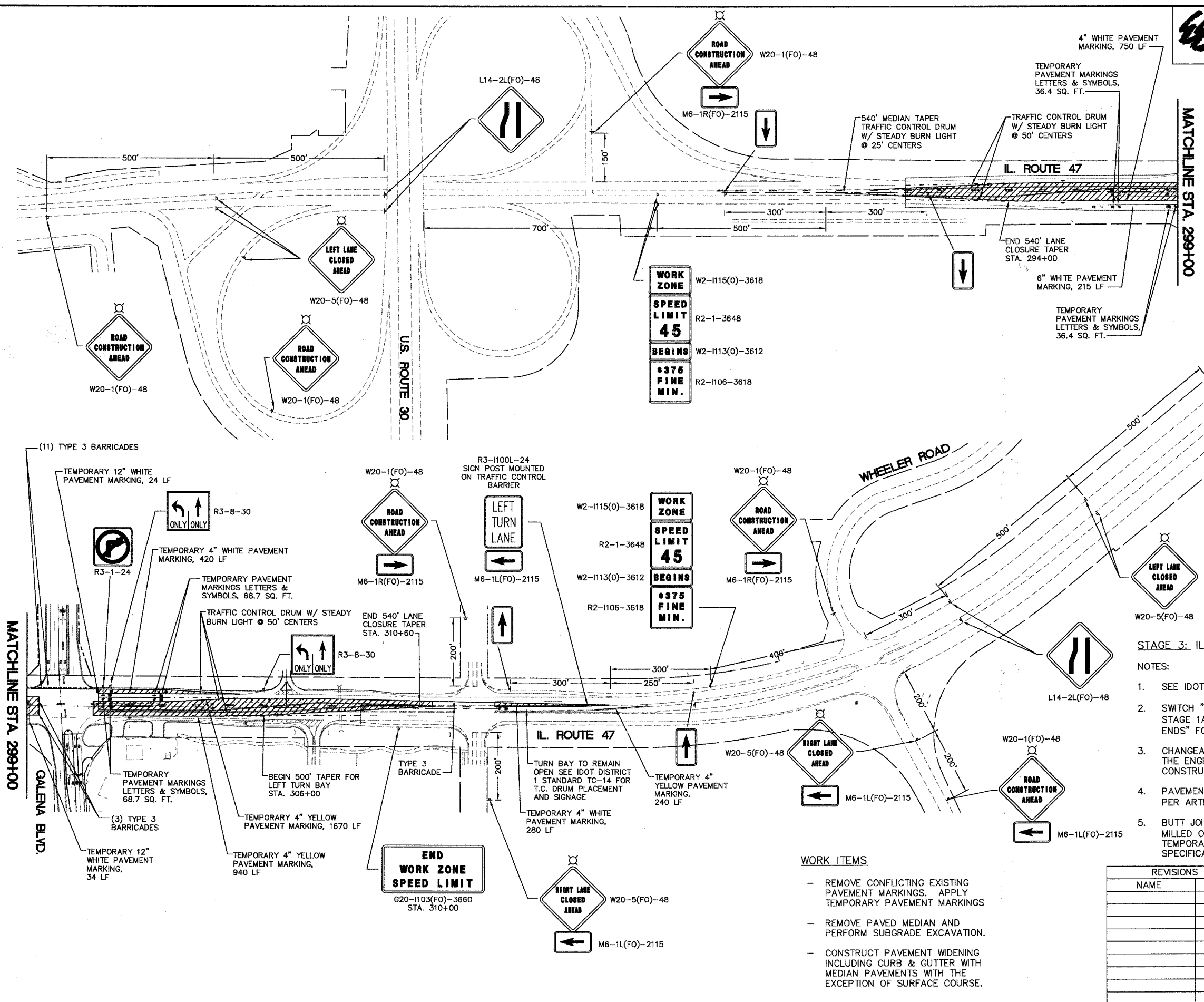
F.A. RTE.	SECTION	COUNTY	TOTAL SHEETS	SHEET NO.
N/A	06-00017-00-PV	KANE	232	69
STA.		TO STA.		
FED. ROAD DIST. NO.		ILLINOIS FED. AID PROJECT		



- WORK AREA
- TRAFFIC CONTROL DRUM W/ STEADY BURN AMBER LIGHT
- SIGN
- TYPE 3 BARRICADE
- DIRECTIONAL INDICATOR BARRICADE
- ARROW BOARD

PLAN	DATE
SURVEYED	BY
ALIGNED	
AS NOTED	
CONSTRUCTION	
NOTES	
NO.	

PROFILE	DATE
SURVEYED	BY
ALIGNED	
AS NOTED	
CONSTRUCTION	
NOTES	
NO.	



- STAGE 3: IL. ROUTE 47 AND GALENA BOULEVARD**
- NOTES:
- SEE IDOT STANDARD 701602 FOR MORE INFORMATION.
 - SWITCH "RIGHT LANE CLOSED" AND "RIGHT LANE ENDS" SIGNS FROM STAGE 1A IL. ROUTE 47 TO "LEFT LANE CLOSED" AND "LEFT LANE ENDS" FOR STAGE 3 I. ROUTE 47.
 - CHANGEABLE MESSAGE SIGN PLACEMENT WILL BE AT THE DIRECTION OF THE ENGINEER. MESSAGE SIGN TO REMAIN THROUGH IL. ROUTE 47 CONSTRUCTION.
 - PAVEMENT JOINTS ARE TO BE CONSISTENT WITH FUTURE LANE LINES PER ARTICLE 406.06(g) OF THE STANDARD SPECIFICATIONS.
 - BUTT JOINTS SHALL NOT REMAIN EXPOSED TO TRAFFIC OVER NIGHT. MILLED OR UNFINISHED SURFACES WILL REQUIRE A 40(H) : 1(V) TEMPORARY RAMP PER ARTICLE 406.08 OF THE STANDARD SPECIFICATIONS.

- WORK ITEMS**
- REMOVE CONFLICTING EXISTING PAVEMENT MARKINGS. APPLY TEMPORARY PAVEMENT MARKINGS
 - REMOVE PAVED MEDIAN AND PERFORM SUBGRADE EXCAVATION.
 - CONSTRUCT PAVEMENT WIDENING INCLUDING CURB & GUTTER WITH MEDIAN PAVEMENTS WITH THE EXCEPTION OF SURFACE COURSE.

REVISIONS	
NAME	DATE

ILLINOIS DEPARTMENT OF TRANSPORTATION

ILLINOIS ROUTE 47 AND GALENA BOULEVARD TRAFFIC CONTROL AND STAGING PLAN

SCALE: 1" = 60'
DATE: 02/07/08

DRAWN BY:
CHECKED BY: WBR