



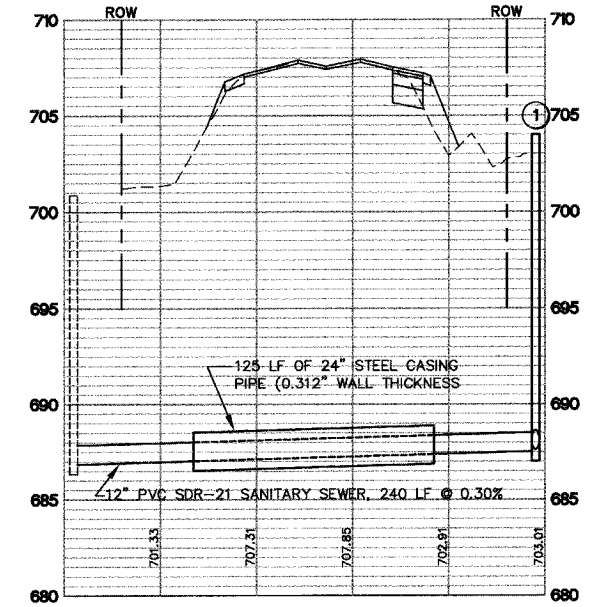
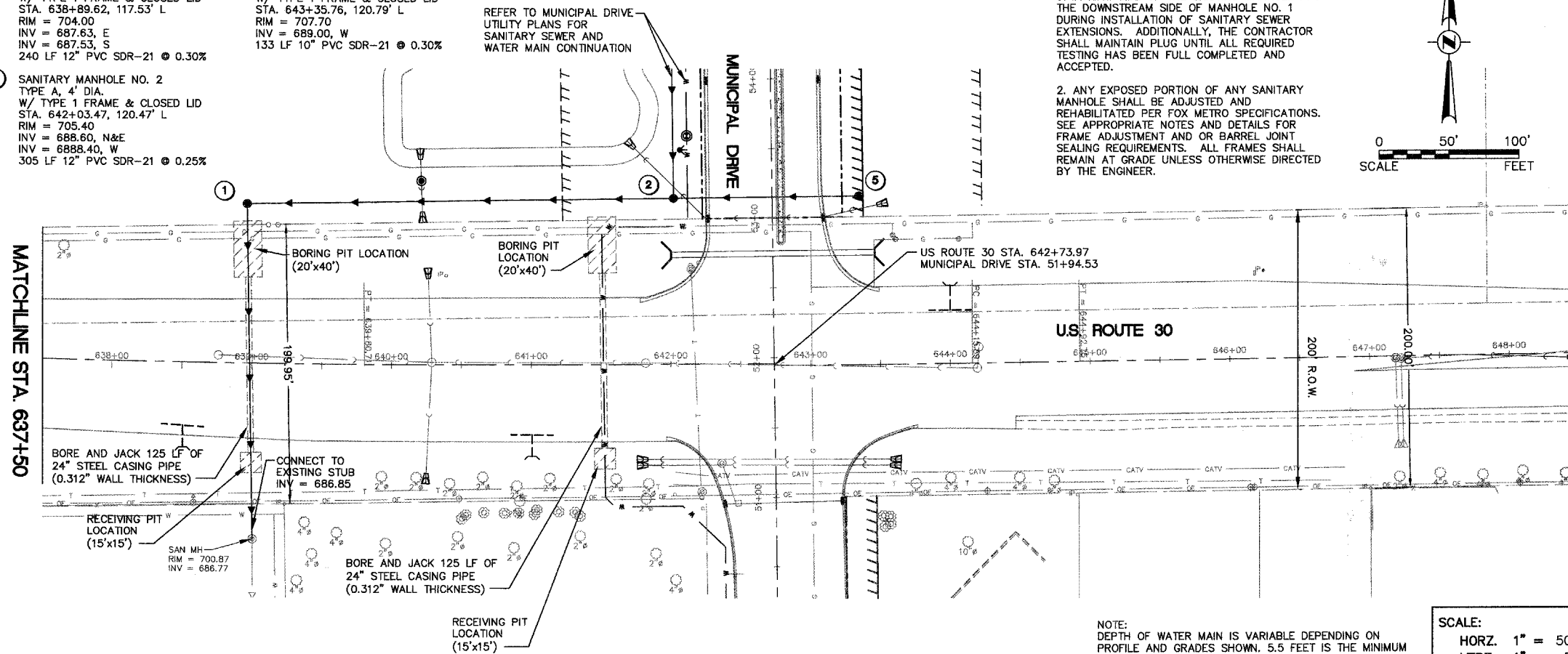
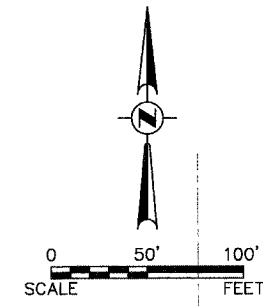
F.A. RTE.	SECTION	COUNTY	TOTAL SHEETS	SHEET NO.
N/A	06-00017-00-PV	KANE	232	84
STA. 637+50		TO STA. 649+00		
FED. ROAD DIST. NO. _____		ILLINOIS		FED. AID PROJECT

SCHEDULE OF SANITARY STRUCTURES

- ① SANITARY MANHOLE NO. 1
TYPE A, 4' DIA.
W/ TYPE 1 FRAME & CLOSED LID
STA. 638+89.62, 117.53' L
RIM = 704.00
INV = 687.63, E
INV = 687.53, S
240 LF 12" PVC SDR-21 @ 0.30%
- ② SANITARY MANHOLE NO. 2
TYPE A, 4' DIA.
W/ TYPE 1 FRAME & CLOSED LID
STA. 642+03.47, 120.47' L
RIM = 705.40
INV = 688.60, N&E
INV = 6888.40, W
305 LF 12" PVC SDR-21 @ 0.25%
- ⑤ SANITARY MANHOLE NO. 5
TYPE A, 4' DIA.
W/ TYPE 1 FRAME & CLOSED LID
STA. 643+35.76, 120.79' L
RIM = 707.70
INV = 689.00, W
133 LF 10" PVC SDR-21 @ 0.30%

NOTES:

- THE CONTRACTOR SHALL PLUG THE UPSTREAM SIDE OF THE EXISTING MANHOLE AND THE DOWNSTREAM SIDE OF MANHOLE NO. 1 DURING INSTALLATION OF SANITARY SEWER EXTENSIONS. ADDITIONALLY, THE CONTRACTOR SHALL MAINTAIN PLUG UNTIL ALL REQUIRED TESTING HAS BEEN FULL COMPLETED AND ACCEPTED.
- ANY EXPOSED PORTION OF ANY SANITARY MANHOLE SHALL BE ADJUSTED AND REHABILITATED PER FOX METRO SPECIFICATIONS. SEE APPROPRIATE NOTES AND DETAILS FOR FRAME ADJUSTMENT AND OR BARREL JOINT SEALING REQUIREMENTS. ALL FRAMES SHALL REMAIN AT GRADE UNLESS OTHERWISE DIRECTED BY THE ENGINEER.



NOTE: DEPTH OF WATER MAIN IS VARIABLE DEPENDING ON PROFILE AND GRADES SHOWN. 5.5 FEET IS THE MINIMUM WATER MAIN DEPTH.

SCALE:
HORZ. 1" = 50'
VERT. 1" = 5'

DATE	BY

DATE	BY

