

F. A. ID.	SECTION	COUNTY	TOTAL SHEETS	SHEET NO.
2859	08-00222-00-RS	COOK	018	001
STA.	TO STA.			
FED. ROAD DIST. NO.	ILLINOIS	FED. AID PROJECT		

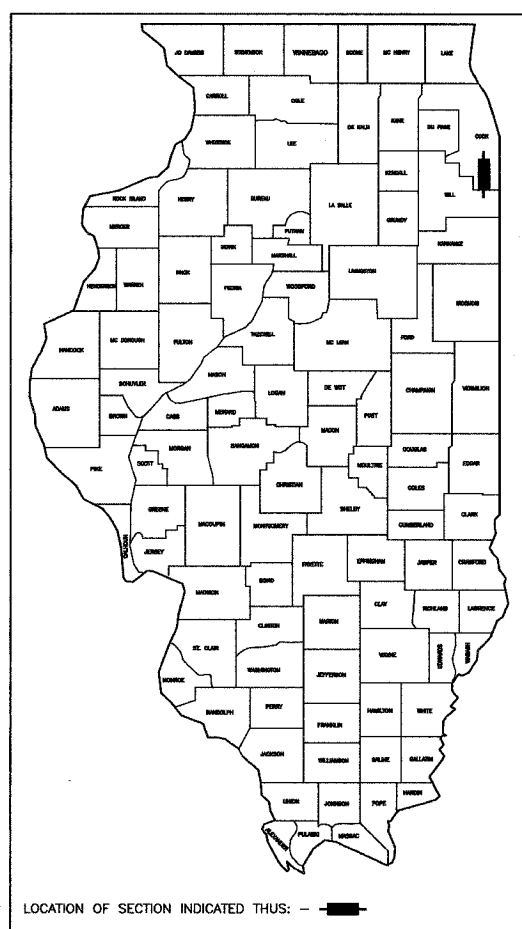
CONTRACT #63045

STATE OF ILLINOIS  
DEPARTMENT OF TRANSPORTATION  
DIVISION OF HIGHWAYS

**PLANS FOR PROPOSED  
FEDERAL AID HIGHWAY**

FAU 2859 / ASHLAND AVENUE  
DIXIE HIGHWAY TO LINCOLN HIGHWAY  
LOCAL AGENCY PAVEMENT PRESERVATION

STREET RESURFACING  
PROJECT: M-8003(982)  
SECTION NO.: 08-00222-00-RS  
JOB NO.: C-91-369-08  
CITY OF CHICAGO HEIGHTS  
COOK COUNTY

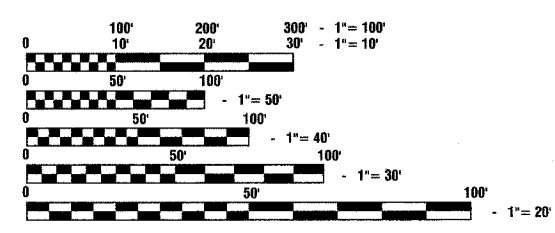


**INDEX OF SHEETS**

- 1 COVER SHEET, INDEX OF SHEETS, LOCATION MAP  
INDEX OF STATE STANDARDS
- 2 SUMMARY OF QUANTITIES & GENERAL NOTES
- 3 TYPICAL CROSS SECTION
- 4-6 PAVEMENT PLAN
- 7-9 STRIPING PLAN
- 10-18 DISTRICT 1 STANDARD DETAILS

**STATE STANDARDS**

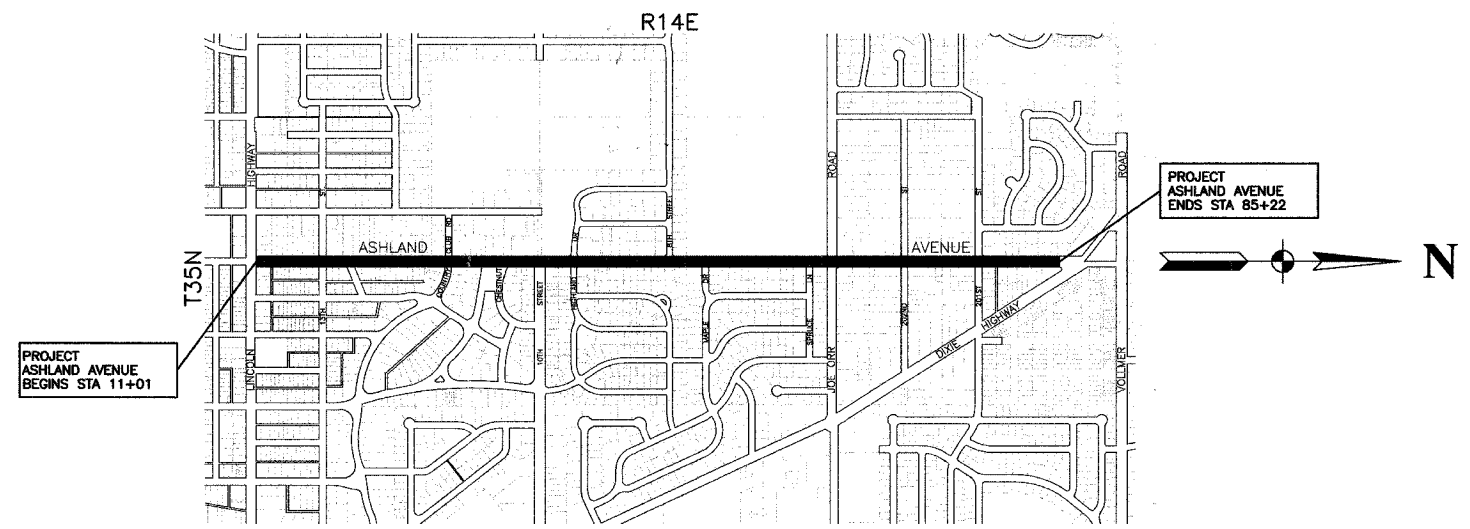
- 000001-05 STANDARD STANDARDS, ABBREVIATIONS AND PATTERNS
- 280001-04 TEMPORARY EROSION CONTROL SYSTEMS
- 424001-05 CURB RAMPS FOR SIDEWALK
- 442201-03 CLASS C AND D PATCHES
- 606001-03 CONCRETE CURB AND COMBINATION CONCRETE CURB & GUTTER
- 701501-04 URBAN LANE CLOSURE 2-L, 2-W, UNDIVIDED
- 701601-05 URBAN LANE CLOSURE, MULTILANE INTERSECTION
- 701701-05 URBAN LANE CLOSURE, MULTILANE INTERSECTION
- 701801-03 LANE CLOSURE, MULTILANE, 1W OR 2W, CROSSWALK  
OR SIDEWALK CLOSURE,
- 701901 TRAFFIC CONTROL DEVICES
- 780001-01 TYPICAL PAVEMENT MARKINGS
- 781001-02 TYPICAL APPLICATIONS RAISED REFLECTIVE PAVEMENT MARKERS
- 886001 DETECTOR LOOP INSTALLATIONS
- 886006 TYPICAL LAYOUT FOR DETECTION LOOPS



FULL SIZE PLANS HAVE BEEN PREPARED USING STANDARD ENGINEERING SCALES, REDUCED SIZED PLANS WILL NOT CONFORM TO STANDARD SCALES, IN MAKING MEASUREMENTS ON REDUCED PLANS, THE ABOVE SCALES MAY BE USED.

J. U. L. I. E.  
JOINT UTILITY LOCATION INFORMATION FOR EXCAVATION  
1-800-892-0123

CONTRACT NO. 63045



**LOCATION MAP**

— INDICATES PROPOSED IMPROVEMENT  
GROSS LENGTH= 7,421 FEET = 1.41 MILES  
NET LENGTH= 7,421 FEET = 1.41 MILES

ASHLAND AVENUE ARTERIAL  
ADT=5,500 (2007)  
=5,500 (2030)  
DESIGN SPEED=35 MPH  
SPEED LIMIT= 35 MPH

STATE OF ILLINOIS  
DEPARTMENT OF TRANSPORTATION  
DIVISION OF HIGHWAYS

APPROVED: 5-7-08 *Anthony DeRuca*  
CHICAGO HEIGHTS  
PASSED: MAY 23, 2008 *Christopher Hoet*  
REGION ONE ENGINEER OF LOCAL ROADS & STREETS

RELEASED FOR  
BID BASED ON  
LIMITED REVIEW: MAY 23, 2008  
*Diana M. O'Keefe*  
DEPUTY DIRECTOR OF HIGHWAYS, REGION ONE ENGINEER

PRINTED BY THE AUTHORITY OF  
THE STATE OF ILLINOIS

PREPARED BY OR UNDER THE  
DIRECT SUPERVISION OF:

*J. M. ...*  
5/7/08



LICENSE EXPIRES: 11/30/09

FIELD ENGINEER: MELCHOR MANGOBA 847-705-4408  
CONSULTANTS: ROBINSON ENGINEERING, LTD. 708-331-6700  
CONTACT ENGINEER: RON SMITH