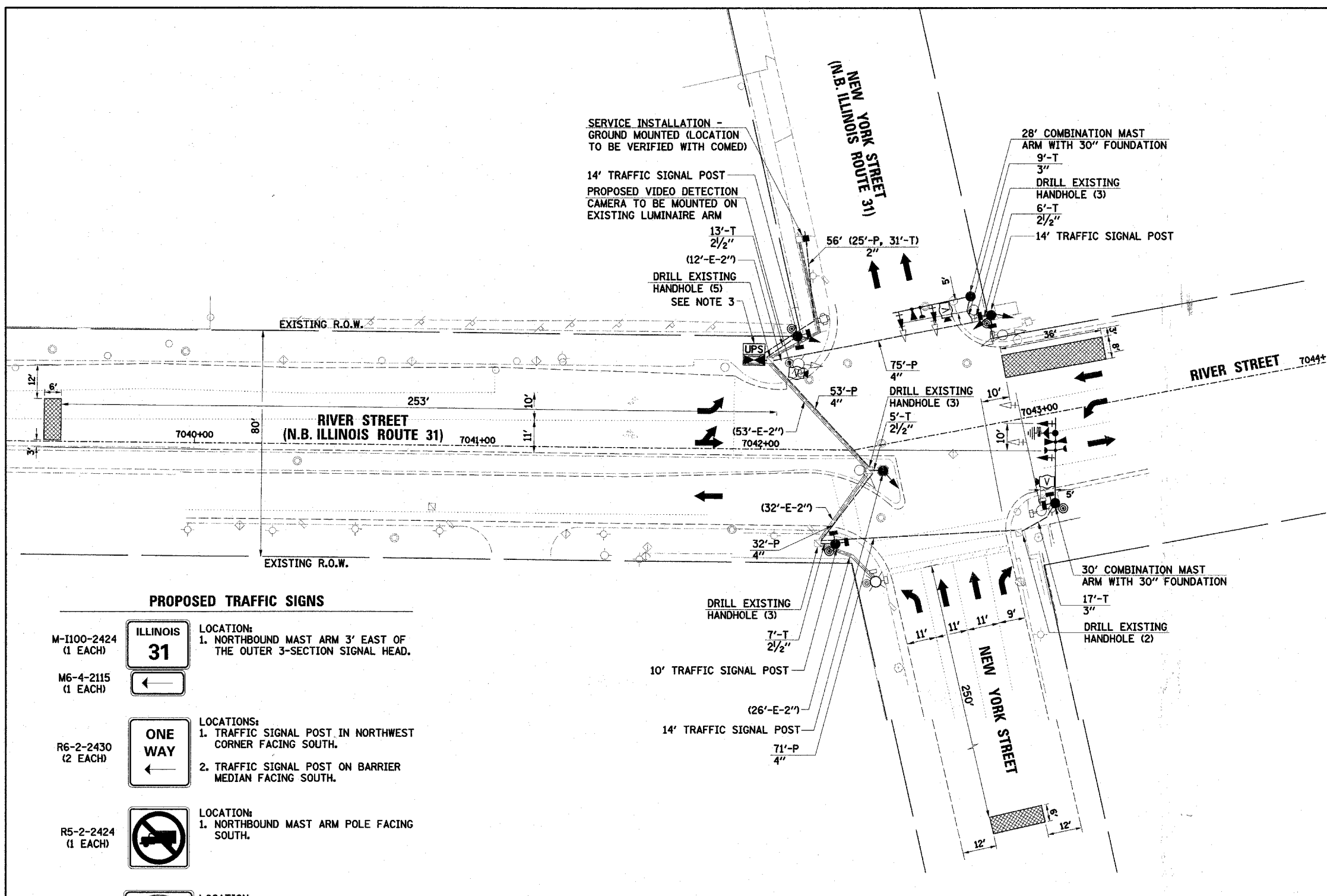


PLAN	DATE
BY	
REVISIONS	
NO.	
DATE	
BY	
DESCRIPTION	

PROFILE	DATE
BY	
REVISIONS	
NO.	
DATE	
BY	
DESCRIPTION	



- NOTES:**
1. THE VIDEO DETECTION CAMERAS SHALL BE MOUNTED AT THE END OF AND ON TOP OF THE 8' ARM FOR THE COMBINATION MAST ASSEMBLIES UNLESS OTHERWISE NOTED.
  2. THE WIRELESS ANTENNA SHALL BE MOUNTED ON THE NORTHBOUND MAST ARM, 3' EAST OF THE OUTER 3-SECTION SIGNAL HEAD OR AS DIRECTED BY THE ENGINEER (SEE MOUNTING DETAIL).
  3. PROVIDE 5' OF CONDUIT IN TRENCH, 2 AT 4".
  4. THE FINAL PAVEMENT MARKING WILL BE INSTALLED AS PART OF A SEPARATE CONTRACT.

**TRAFFIC SIGNAL LEGEND**

	PROPOSED	EXISTING
CONTROLLER		
SERVICE INSTALLATION		
SIGNAL HEAD		
SIGNAL HEAD WITH BACKPLATE		
SIGNAL HEAD, PEDESTRIAN		
SIGNAL POST		
MAST ARM ASSEMBLY AND POLE, STEEL		
MAST ARM ASSEMBLY AND POLE, ALUMINUM		
COMBINATION MAST ARM ASSEMBLY AND POLE, STEEL WITH LUMINAIRE		
UNIT DUCT	UD	
COMMON TRENCH	CT	
HANDHOLE		
HEAVY DUTY HANDHOLE		
DOUBLE HANDHOLE		
G.S. CONDUIT IN TRENCH (T) OR PUSHED (P)		
PEDESTRIAN PUSHBUTTON DETECTOR		
DETECTOR LOOP		
CAST IRON JUNCTION BOX		
EMERGENCY VEHICLE LIGHT DETECTOR		
CONFIRMATION BEACON		
SIGNAL HEAD OPTICALLY PROGRAMMED		
CONDUIT SPLICE		
WOOD POLE		
RACEWAY FOR MAGNETIC DETECTOR, TYPE I OR TYPE II		
VEHICLE DETECTOR, NON COMPENSATED MAGNETIC TYPE		
RAILROAD CONTROL CABINET		
TELEPHONE CONNECTION		
ILLUMINATED SIGN "NO LEFT TURN"		
ILLUMINATED SIGN "NO RIGHT TURN"		
UNINTERRUPTABLE POWER SUPPLY	UPS	
WIRELESS ANTENNA		
VIDEO DETECTION CAMERA		
VIDEO DETECTION AREA		

**PROPOSED TRAFFIC SIGNS**

- M-1100-2424 (1 EACH)** LOCATION: 1. NORTHBOUND MAST ARM 3' EAST OF THE OUTER 3-SECTION SIGNAL HEAD.
- M6-4-2115 (1 EACH)** LOCATION: 1. NORTHBOUND MAST ARM 3' EAST OF THE OUTER 3-SECTION SIGNAL HEAD.
- R6-2-2430 (2 EACH)** LOCATIONS: 1. TRAFFIC SIGNAL POST IN NORTHWEST CORNER FACING SOUTH. 2. TRAFFIC SIGNAL POST ON BARRIER MEDIAN FACING SOUTH.
- R5-2-2424 (1 EACH)** LOCATION: 1. NORTHBOUND MAST ARM POLE FACING SOUTH.
- R5-1-3030 (1 EACH)** LOCATION: 1. TRAFFIC SIGNAL POST IN SOUTHWEST CORNER FACING NORTH.
- R3-5-2430 (1 EACH)** LOCATION: 1. TRAFFIC SIGNAL POST IN NORTHWEST CORNER FACING NORTH.
- R3-5-2430 (1 EACH)** LOCATION: 1. TRAFFIC SIGNAL POST IN SOUTHWEST CORNER FACING NORTH.

THE TRAFFIC SIGNAL CONTROL EQUIPMENT FOR THIS PROJECT SHALL BE "ECONOLITE" TO MATCH THE EXISTING ADJACENT SYSTEM.

THE EMERGENCY VEHICLE PREEMPTION EQUIPMENT FOR THIS PROJECT SHALL BE OPTICOM AS REQUIRED BY THE CITY OF AURORA.

**RESTORATION OF WORK AREA:**  
 RESTORATION OF THE TRAFFIC SIGNAL WORK AREA SHALL BE INCIDENTAL TO THE RELATED PAY ITEM SUCH AS FOUNDATION, CONDUIT, HANDHOLE, TRENCH AND BACKFILL, ETC., AND NO EXTRA COMPENSATION SHALL BE ALLOWED. ALL ROADWAY SURFACES SUCH AS SHOULDERS, MEDIANS, SIDEWALKS, PAVEMENT, ETC. SHALL BE REPLACED IN KIND. ALL DAMAGE TO MOWED LAWNS SHALL BE REPLACED WITH AN APPROVED SOD, AND ALL DAMAGE TO UNMOWED FIELDS SHALL BE SEEDED IN ACCORDANCE WITH STANDARD SPECIFICATIONS 252 AND 250 RESPECTIVELY.