

STATE OF ILLINOIS
DEPARTMENT OF TRANSPORTATION
DIVISION OF HIGHWAYS

PLANS FOR PROPOSED
FEDERAL AID HIGHWAY

FAU 1621 (RIDGE ROAD)
TORRENCE AVENUE TO IL/IN STATE LINE
LOCAL AGENCY PAVEMENT PRESERVATION

STREET RESURFACING
PROJECT: M-9003(003)
SECTION NO.: 08-00164-00-RS
JOB NO.: C-91-387-08
VILLAGE OF LANSING
COOK COUNTY

F. A. ID. NO.	SECTION	COUNTY	TOTAL SHEETS	SHEET NO.
1621	08-00164-00-RS	COOK	11	01
STA. 0+00		TO STA. 91+57		
FED. ROAD DIST. NO.		FED. AID PROJECT		

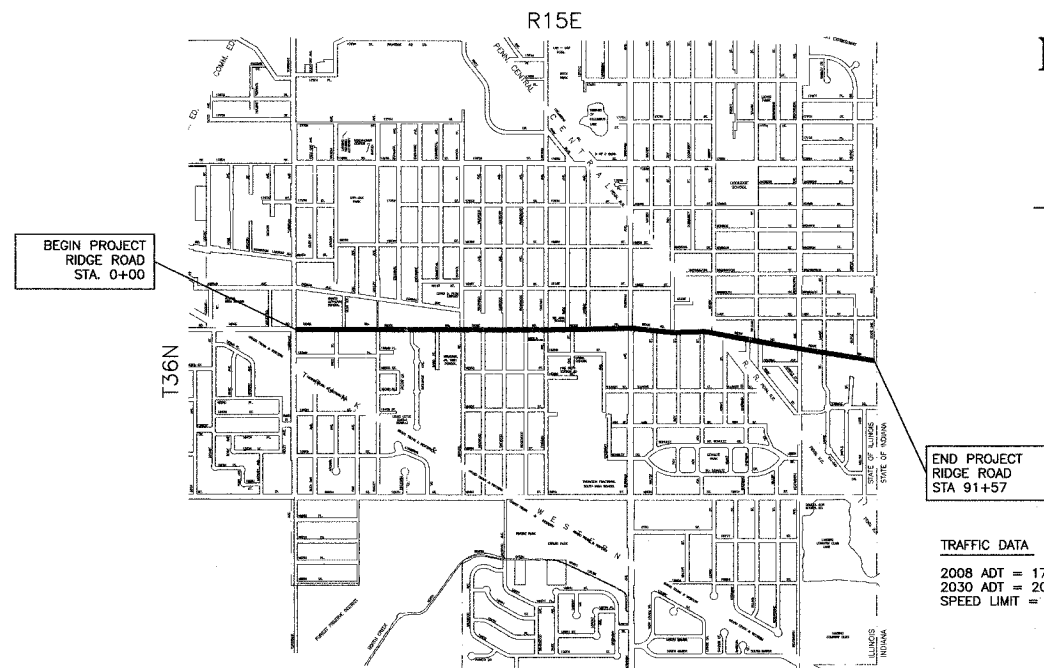
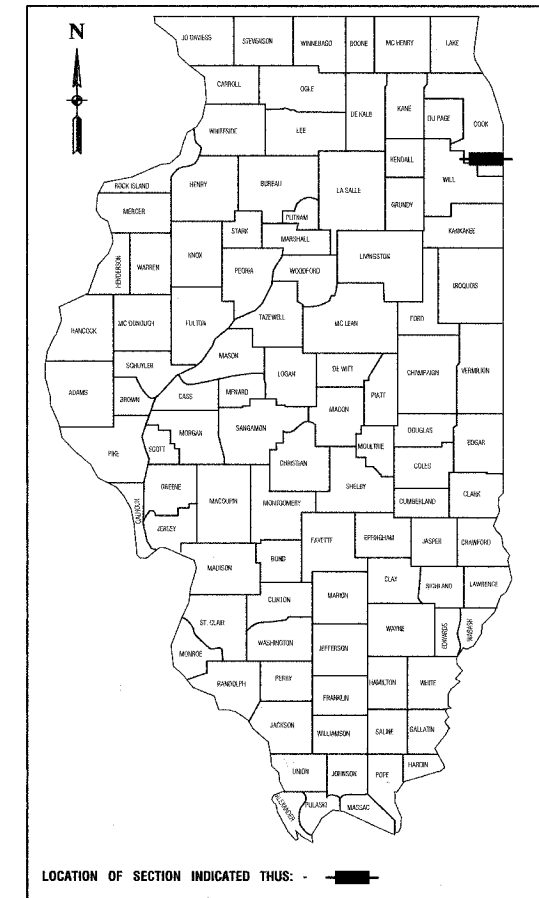
CONTRACT #63054

INDEX OF SHEETS

- COVER SHEET, INDEX OF SHEETS, LOCATION MAP
INDEX OF STATE STANDARDS
- SUMMARY OF QUANTITIES & GENERAL NOTES
- TYPICAL CROSS SECTION
- 6. ROADWAY PLANS
- 9. PAVEMENT MARKING PLANS
- DISTRICT ONE PAVEMENT MARKINGS
- BUTT JOINT AND HMA TAPER DETAILS

STATE STANDARDS

- | | |
|-----------|--|
| 000001-05 | STANDARD SYMBOLS, ABBREVIATIONS AND PATTERNS |
| 424001-05 | CURB RAMPS FOR SIDEWALKS |
| 442201-03 | CLASS C AND D PATCHES |
| 606001-03 | CONCRETE CURB TYPE B AND COMBINATION CURB AND GUTTER |
| 701501-04 | URBAN LANE CLOSURE, 2-L, 2-W, UNDIVIDED |
| 701701-05 | URBAN LANE CLOSURE, MULTILANE, INTERSECTION |
| 701801-03 | LANE CLOSURE, MULTILANE, 1W OR 2W, CROSSWALK OR SIDEWALK CLOSURE |
| 701901 | TRAFFIC CONTROL DEVICES |
| 780001-01 | TYPICAL PAVEMENT MARKINGS |
| 886001 | DETECTOR LOOP INSTALLATIONS |
| 886006 | TYPICAL LAYOUT FOR DETECTION LOOPS |

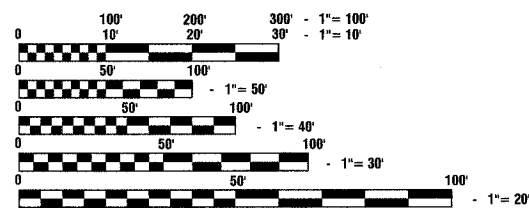


END PROJECT
RIDGE ROAD
STA. 91+57

TRAFFIC DATA
2008 ADT = 17,300
2030 ADT = 20,500
SPEED LIMIT = 25-35 MPH

LOCATION MAP

GROSS LENGTH OF PROJECT: 9157 FEET (1.73 MILES)
NET LENGTH OF PROJECT: 9157 FEET (1.73 MILES)



FULL SIZE PLANS HAVE BEEN PREPARED USING STANDARD ENGINEERING SCALES, REDUCED SIZED PLANS WILL NOT CONFORM TO STANDARD SCALES, IN MAKING MEASUREMENTS ON REDUCED PLANS, THE ABOVE SCALES MAY BE USED.

J. U. L. I. E.
JOINT UTILITY LOCATION INFORMATION FOR EXCAVATION
1 - 800 - 892 - 0123

CONTRACT NO. 63054

FIELD ENGINEER: MELCHOR MANGOBA 847-705-4408
CONSULTANTS: ROBINSON ENGINEERING, LTD. 708-331-6700

STATE OF ILLINOIS
DEPARTMENT OF TRANSPORTATION
DIVISION OF HIGHWAYS

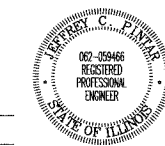
APPROVED May 6, 2008
Jim Watkins
DIRECTOR OF PUBLIC WORKS, VILLAGE OF LANSING

PASSED MAY 23, 2008
CHRISTOPHER HOLT
REGION ONE ENGINEER OF LOCAL ROADS & STREETS

RELEASING FOR BID BASED ON LIMITED REVIEW MAY 22, 2008
Dwain M. O'Keefe Jr.
DEPUTY DIRECTOR OF HIGHWAYS, REGION ONE ENGINEER

PRINTED BY AUTHORITY OF THE STATE OF ILLINOIS

PREPARED BY OR UNDER THE DIRECT SUPERVISION OF:
M.C.G.M.
5/16/08



LICENSE EXPIRES: 11/30/09