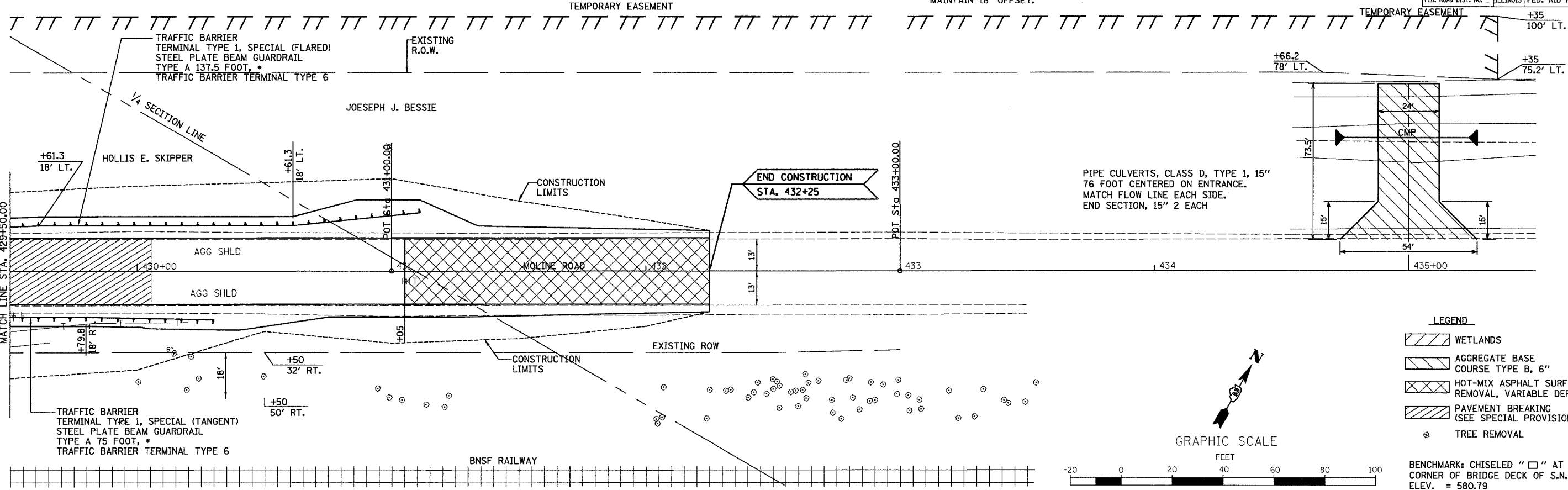


F.A.S. RTE.	SECTION	COUNTY	TOTAL SHEETS	SHEET NO.
203	11B-1	*	43	10
STA.	TO STA.			
FED. ROAD DIST. NO.	ILLINOIS	FED. AID PROJECT		

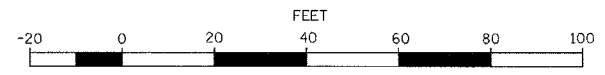
* FLARE FIRST 37.5' OF GUARDRAIL AND LAST 12.5' OF TYPE 6 TERMINAL FROM 16' LEFT OR RIGHT TO 18' LEFT OR RIGHT THEN MAINTAIN 18' OFFSET.

* WHITESIDE & ROCK ISLAND



- LEGEND**
- WETLANDS
 - AGGREGATE BASE COURSE TYPE B, 6"
 - HOT-MIX ASPHALT SURFACE REMOVAL, VARIABLE DEPTH
 - PAVEMENT BREAKING (SEE SPECIAL PROVISION)
 - TREE REMOVAL

GRAPHIC SCALE



BENCHMARK: CHISELED "□" AT SOUTHWEST CORNER OF BRIDGE DECK OF S.N. 098-0003. ELEV. = 580.79

PLAN

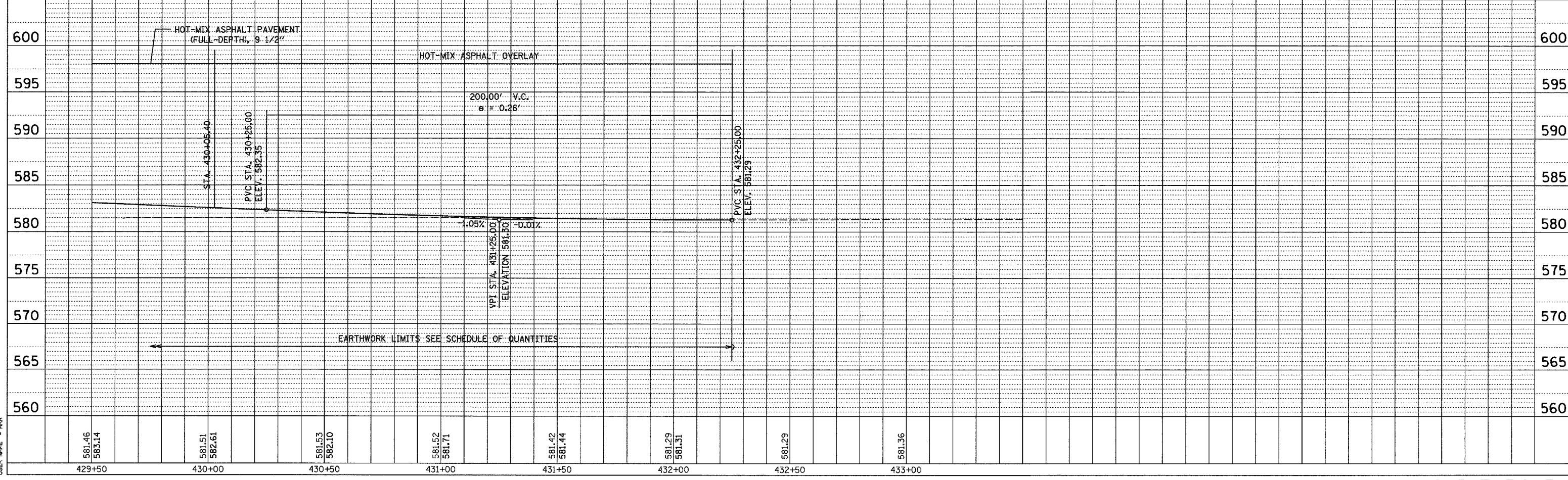
REVISIONS	DATE

NOTE BOOK NO. _____
 CHECKED BY _____
 CADD FILE NAME _____

PROFILE

REVISIONS	DATE

NOTE BOOK NO. _____
 CHECKED BY _____
 STRUCTURE NOTATION CHKD _____



PLOT DATE = 10/27/87
 PLOT SCALE = 20
 USER NAME = ARR