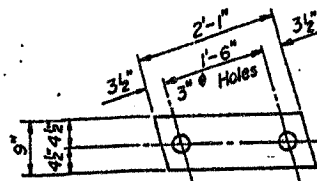
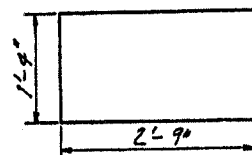


STATE OF ILLINOIS
DEPARTMENT OF PUBLIC WORKS & BUILDINGS
DIVISION OF HIGHWAYS

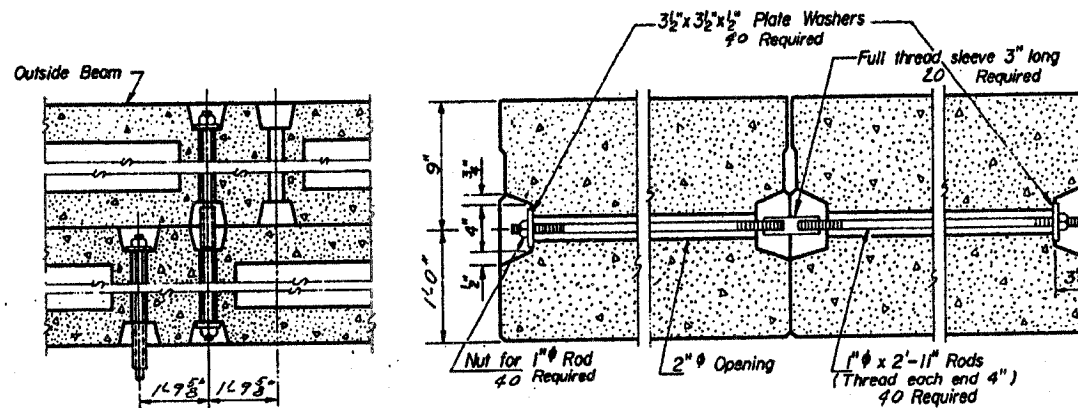
FOR INFORMATION ONLY



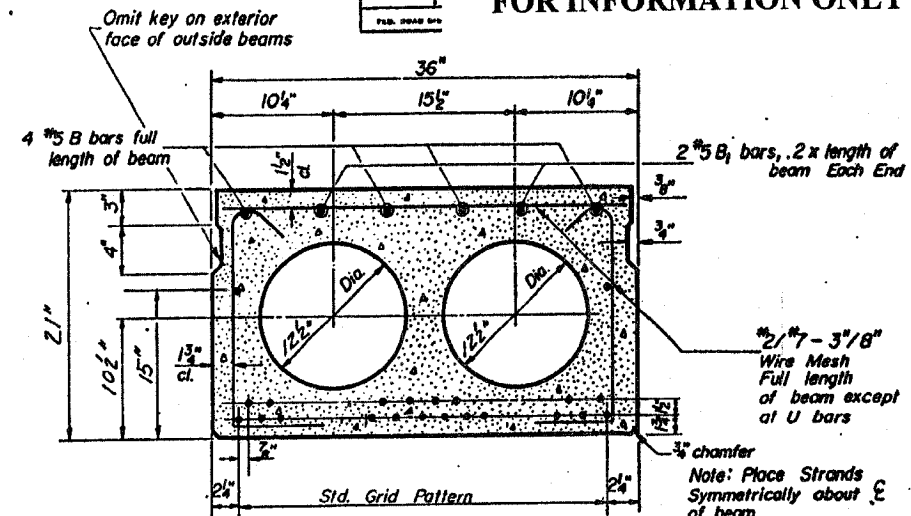
FABRIC BEARING PAD



U BAR

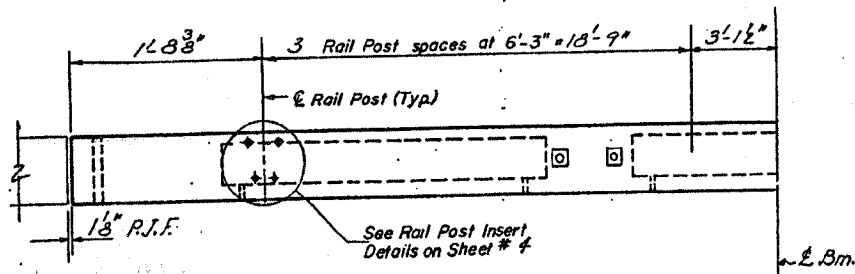


TYPICAL TRANSVERSE TIE ASSEMBLY

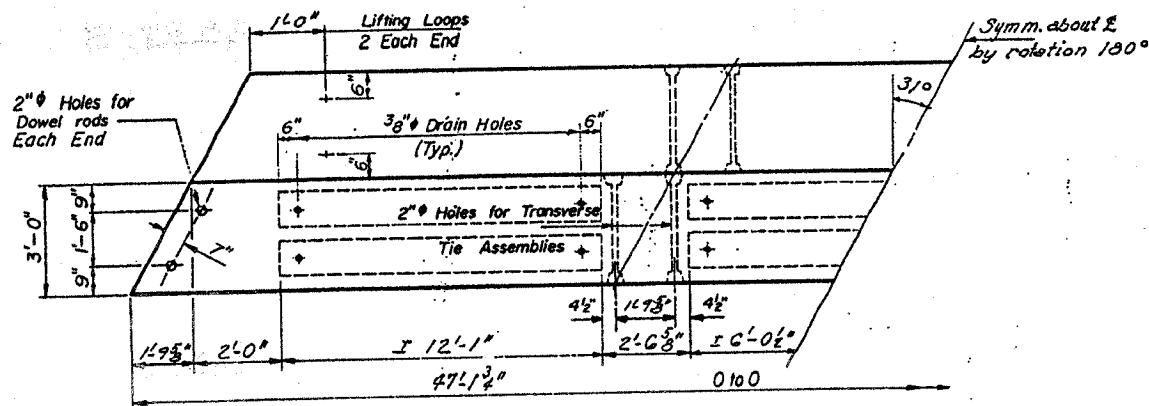


TYPICAL SECTION

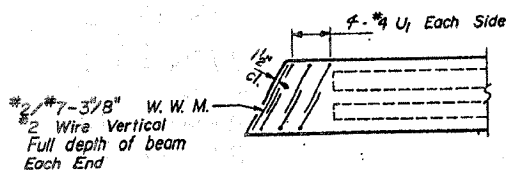
7 # Strands Each Strand Stressed to 18,900 lbs.
12 Strands 1 3/4" up, 8 Strands 3/4" up, 2 Strands 15" up



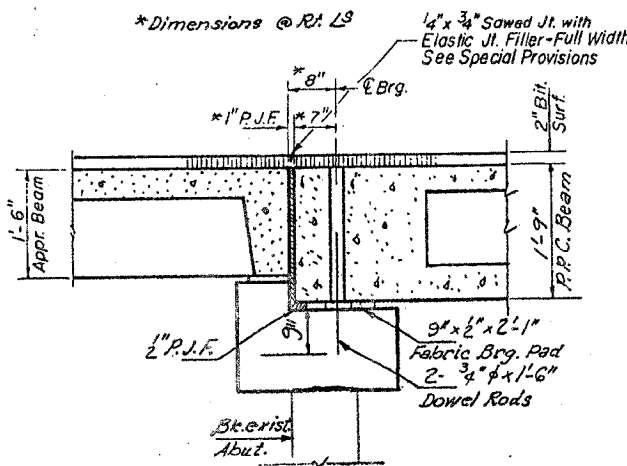
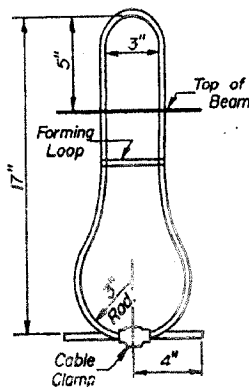
ELEVATION



PARTIAL PLAN

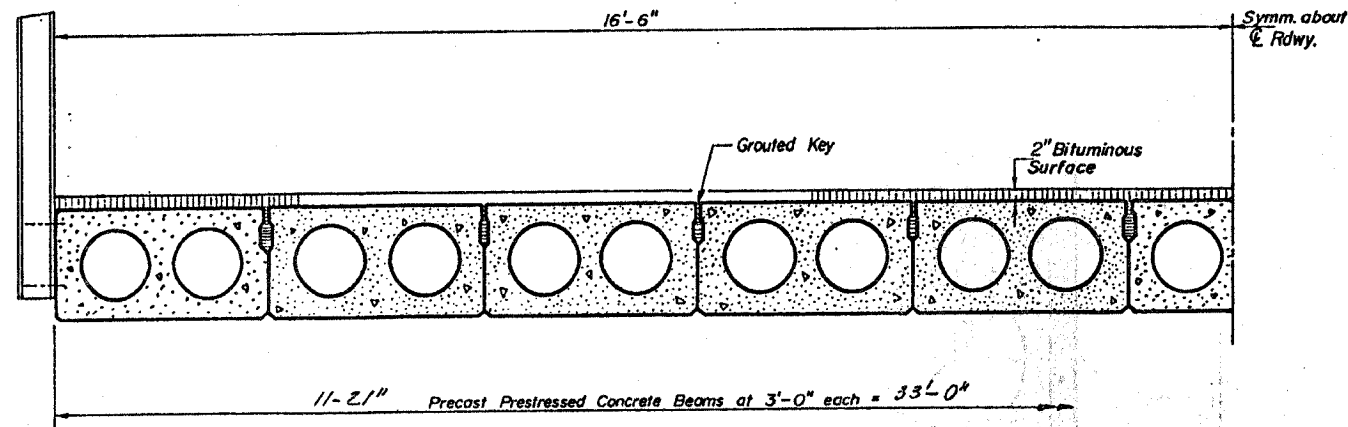


END PLAN



GENERAL NOTES

Prestressing steel shall be non-galvanized high strength, stress-relieved 7-wire strand. The nominal diameter shall be 7/16 and the nominal cross-sectional area shall be 0.109 sq. in. Lifting loops shall be 5/8" diameter, 6x19 class wire rope with fiber core and shall have a minimum ultimate tensile strength of 27,000 lbs. The 1" rods in the transverse tie assembly shall be tightened to a snug fit and the threads set. Pockets that receive transverse tie bar on outside beam shall be filled with grout after transverse tie assembly is in place. Longitudinal shear keys shall be packed with a very dry mix of 2-1 sand and P.C. mortar. After beams have been erected, holes for dowel anchors shall be drilled into sub-structure. Grout dowels at fixed end. At expansion end grout dowels into sub-structure & fill holes in beam with P.A.F.-4. Steel for dowel rods, transverse tie rods, and armor angles shall be S.A.E. 1020, or ASTM A-306 Grade 70-30. After fabrication the transverse tie assemblies (tie rods, nuts, washers and sleeves) shall be hot-dipped galvanized in accordance with A.S.T.M. Designation: A153. Cost of reinforcement and accessories cast into the beam, of bearing pads, of armor angles, and of grouting longitudinal shear keys is included in unit price bid for "Precast Prestressed Concrete Deck Beams."



HALF CROSS SECTION

BILL OF MATERIAL

Item	Quantity	Unit
Precast Prestressed Concrete Deck Beams 21"	Sq. Ft.	1556
Removal of Existing Superstructure	Each	1

SUPERSTRUCTURE
S.B.I.R.T. 3 SEC. II BR
WHITESIDE COUNTY
R.T.A. 977-12

DESIGNED Simon Ustank
CHECKED James Ponce
DRAWN JAMES S. CARMICHAEL

EXAMINED Feb. 26 1970
PASSED W.E. Bannmann
C.E. Hummer

SEE THROUGH ABOUT AT OUTSIDE P.A.