

STATE OF ILLINOIS
 DEPARTMENT OF TRANSPORTATION
 DIVISION OF HIGHWAYS

**PROPOSED
 HIGHWAY PLANS**

FAI ROUTE 80 (I-80)
 SECTION D2 SPRING PATCHING 2007-2
 RESURFACING
 ROCK ISLAND COUNTY
 C-92-102-08

F.A.I. RTE.	SECTION	COUNTY	TOTAL SHEETS	SHEET NO.
80		ROCK ISLAND	31	1
FED. ROAD DIST. NO.		ILLINOIS	CONTRACT NO. 64D34	

• D2 SPRING PATCHING 2007-2

FOR INDEX OF SHEETS, SEE SHEET NO. 2
 FOR STATE STANDARDS, SEE SHEET NO. 2

TRAFFIC VOLUMES:

I-80

CURRENT ADT: 26,000 (2005) 36% TRUCKS

OMISSIONS

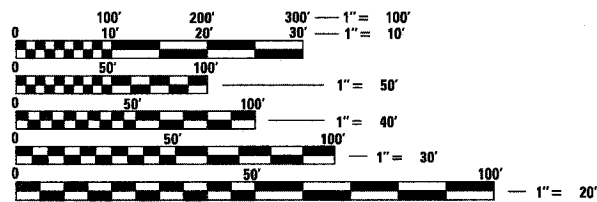
STA 63+90 - 64+15 (WEATHER SENSOR)

STA 92+00 - 95+25 (WIM SCALE)



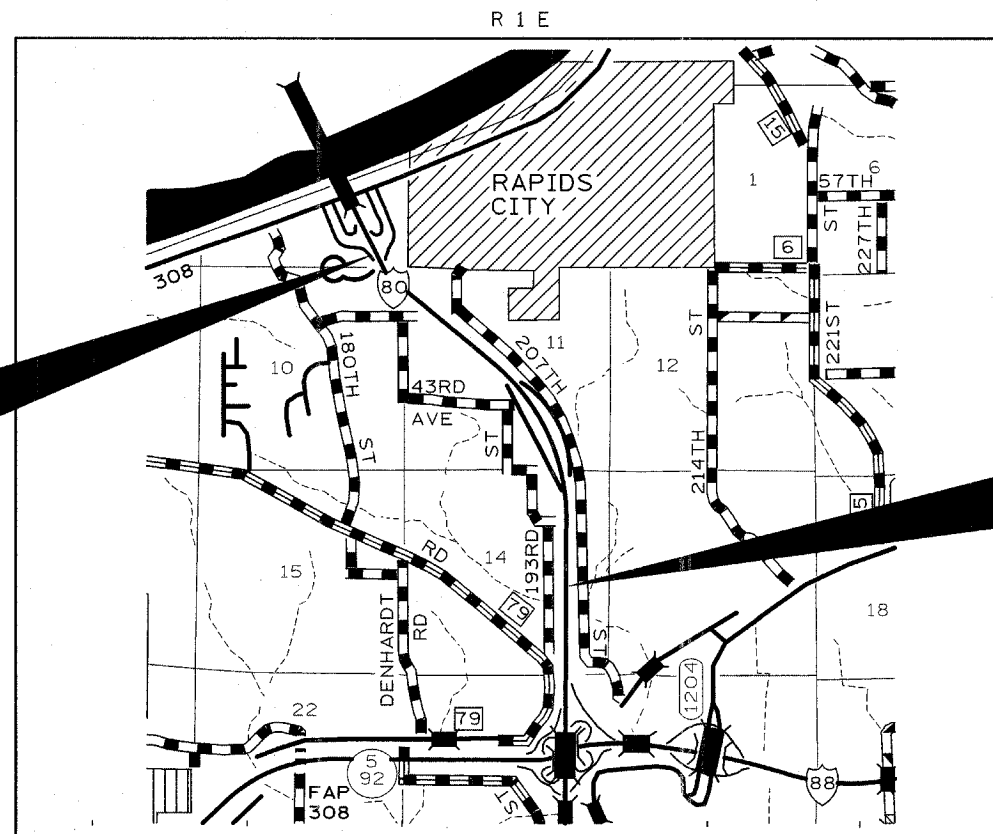
SECTION BEGINS STA. 59+48

SECTION ENDS STA. 177+75



FULL SIZE PLANS HAVE BEEN PREPARED USING STANDARD ENGINEERING SCALES. REDUCED SIZED PLANS WILL NOT CONFORM TO STANDARD SCALES. IN MAKING MEASUREMENTS ON REDUCED PLANS, THE ABOVE SCALES MAY BE USED.

J.U.L.I.E.
 JOINT UTILITY LOCATION INFORMATION FOR EXCAVATION
 1-800-892-0123
 OR 811



PROJECT ENGINEER: REBECCA MARRUFFO
 PROJECT MANAGER: ED CONDERMAN (815)-284-5947
 HAMPTON TOWNSHIP, SECTION 10, 11, 14
 CONTRACT NO. 64D34

NET LENGTH OF IMPROVEMENT = 11,477 FEET = 2.17 MILES
 GROSS LENGTH OF IMPROVEMENT = 11,827 FEET = 2.24 MILES

STATE OF ILLINOIS
 DEPARTMENT OF TRANSPORTATION
 DIVISION OF HIGHWAYS

SUBMITTED May 15 20 08
John S. Ryan
 DEPUTY DIRECTOR OF HIGHWAYS, REGION ENGINEER

June 27, 20 08
Eric E. Abram
 ENGINEER OF DESIGN AND ENVIRONMENT

June 27, 20 08
Christine M. Reed
 DIRECTOR OF HIGHWAYS, CHIEF ENGINEER

**PRINTED BY THE AUTHORITY
 OF THE STATE OF ILLINOIS**

INDEX OF SHEETS

1	COVERSHEET
2	INDEX OF SHEETS AND STANDARDS
3 - 4	SUMMARY OF QUANTITIES
5	GENERAL NOTES
6 - 15	TYPICAL SECTIONS
16 - 17	SCHEDULE OF QUANTITIES
18 - 21	PATCHING SCHEDULE
22 - 26	PLAN VIEW
27	PCC SURFACE GRINDING DETAIL
28	PARTIAL DEPTH PATCHING
29	TRAFFIC CONTROL & PROTECTION FOR RAMPS (DIST STD 95.2)
30	TRAFFIC CONTROL TYPICAL WEAVE (DIST STD 39.1)
31	PAINTING DETAILS (DIST STD 44.1)

STANDARDS

442201-03	CLASS C & D PATCHES
642001	SHOULDER RUMBLE STRIPS
701101-01	OFF-ROAD OPERATIONS, MULTILANE, 4.5m (15') TO 600mm (24") FROM PAVEMENT EDGE
701106-01	OFF-ROAD OPERATIONS, MULTILANE, MORE THAN 4.5m (15') AWAY
701400-02	APPROACH TO LANE CLOSURE, FREEWAY / EXPRESSWAY
701401-04	LANE CLOSURE, FREEWAY / EXPRESSWAY
701406-04	LANE CLOSURE, FREEWAY/ EXPRESSWAY, DAY OPERATIONS ONLY
701411-04	LANE CLOSURE, MULTILANE, AT ENTRANCE OR EXIT RAMP, FOR SPEEDS * 45 MPH
701426-02	LANE CLOSURE, MULTILANE, INTERMITTENT OR MOVING OPERATIONS, FOR SPEEDS * 45 MPH
701901	TRAFFIC CONTROL DEVICES
720011	METAL POSTS FOR SIGNS, MARKERS, AND DELINEATORS
728001	TELESCOPING STEEL SIGN SUPPORT
729001	APPLICATIONS OF TYPE A AND B METAL POSTS (FOR SIGNS AND MARKERS)
780001-01	TYPICAL PAVEMENT MARKINGS
781001-02	TYPICAL APPLICATIONS RAISED REFLECTIVE PAVEMENT MARKINGS

CODE NUMBER	PAY ITEM	UNIT	TOTAL QUANTITY	I 000 - 2A 100% STATE
31100100	SUB-BASE GRANULAR MATERIAL, TYPE A	TON	294.00	294.00
40600215	POLYMERIZED BITUMINOUS MATERIALS (PRIME COAT)	TON	21.50	21.50
40600300	AGGREGATE (PRIME COAT)	TON	57.00	57.00
40600555	LEVELING BINDER (HAND METHOD), N105	TON	208.10	208.10
40600855	POLYMERIZED LEVELING BINDER (MACHINE METHOD), N105	TON	2,144.00	2,144.00
40600895	CONSTRUCTING TEST STRIP	EACH	1.00	1.00
40600982	HOT-MIX ASPHALT SURFACE REMOVAL - BUTT JOINT	SQ YD	432.00	432.00
40600985	PORTLAND CEMENT CONCRETE SURFACE REMOVAL - BUTT JOINT	SQ YD	134.00	134.00
40600990	TEMPORARY RAMP	SQ YD	119.00	119.00
40603575	POLYMERIZED HOT-MIX ASPHALT SURFACE COURSE, MIX "E", N105	TON	3,441.0	3,441.0
44000155	HOT-MIX ASPHALT SURFACE REMOVAL, 1 1/2"	SQ YD	4,879.00	4,879.00
44201843	CLASS D PATCHES, TYPE III, 16 INCH	SQ YD	100.00	100.00
44201845	CLASS D PATCHES, TYPE IV, 16 INCH	SQ YD	331.00	331.00
60300105	FRAMES AND GRATES TO BE ADJUSTED	EACH	1.00	1.00
64200105	SHOULDER RUMBLE STRIP	FOOT	13,245.00	13,245.00
67100100	MOBILIZATION	L SUM	1.00	1.00
70100420	TRAFFIC CONTROL AND PROTECTION, STANDARD 701411	EACH	7.00	7.00

FILE NAME = P:\1-00_repurfvrdgn	USER NAME = grantpm	DESIGNED -	REVISED -	STATE OF ILLINOIS DEPARTMENT OF TRANSPORTATION	SUMMARY OF QUANTITIES				F.A.I. RTE. 80	SECTION *	COUNTY ROCK ISLAND	TOTAL SHEETS 31	SHEET NO. 3
	PLOT SCALE = 50.000' / IN.	DRAWN -	REVISED -		SCALE:	SHEET NO.	OF	SHEETS	STA.	TO STA.	FED. ROAD DIST. NO.	ILLINOIS FED. AID PROJECT	CONTRACT NO. 64D34
	PLOT DATE = Thu May 15 11:05:58 2008	CHECKED -	REVISED -										
		DATE -	REVISED -										

CODE NUMBER	PAY ITEM	UNIT	TOTAL QUANTITY	I 000 - 2A 100% STATE
70100700	TRAFFIC CONTROL AND PROTECTION, STANDARD 701406	L SUM	1.00	1.00
70100800	TRAFFIC CONTROL AND PROTECTION, STANDARD 701401	L SUM	1.00	1.00
70106800	CHANGEABLE MESSAGE SIGN	CAL MO	4.00	4.00
70300100	SHORT-TERM PAVEMENT MARKING	FOOT	44,419.00	44,419.00
70301000	WORK ZONE PAVEMENT MARKING REMOVAL	SQ FT	7,404.00	7,404.00
* 78001110	PAINT PAVEMENT MARKING - LINE 4"	FOOT	30,414.00	30,414.00
* 78001130	PAINT PAVEMENT MARKING - LINE 6"	FOOT	6,050.00	6,050.00
* 78001140	PAINT PAVEMENT MARKING - LINE 8"	FOOT	4,274.00	4,274.00
* 78001150	PAINT PAVEMENT MARKING - LINE 12"	FOOT	440.00	440.00
* 78100100	RAISED REFLECTIVE PAVEMENT MARKER	EACH	153.00	153.00
X4401705	PARTIAL DEPTH REMOVAL	SQ YD	6,606.00	6,606.00
X4421000	PARTIAL DEPTH PATCHING	TON	1,850.00	1,850.00
Z0029200	GRINDING PORTLAND CEMENT CONCRETE SURFACE	SQ YD	734.00	734.00

* SPECIALITY ITEMS

FILE NAME = P:\1-80 resurf.dgn	USER NAME = grantpm	DESIGNED -	REVISED -	STATE OF ILLINOIS DEPARTMENT OF TRANSPORTATION	SUMMARY OF QUANTITIES				F.A.I. RTE.	SECTION	COUNTY	TOTAL SHEETS	SHEET NO.		
		DRAWN -	REVISED -		SCALE:	SHEET NO.	OF	SHEETS	STA.	TO STA.	80	*	ROCK ISLAND	31	4
		CHECKED -	REVISED -								CONTRACT NO. 64D34				
		DATE -	REVISED -								FED. ROAD DIST. NO. ILLINOIS FED. AID PROJECT				

GENERAL NOTES

All Borrow/Waste/Use sites must be approved by the Department prior to removing any material from the project or initiating any earthmoving activities, including temporary stockpiling outside the limits of construction.

Previously pugmilled stockpiles of "Type A" older than 1 month will not be approved for use until a moisture check is run to verify moisture content. Material shipped to projects without being tested will not be accepted.

When laying out for patching, the minimum distance between new patches (saw cut to saw cut) shall be 4.6 m (15 feet). When patch spacing is less than 4.6 m (15 feet), the pavement between patches shall also be removed and replaced.

Milling machines on this project shall be capable of removing a layer of bituminous a minimum 6' wide and 1-1/2 inches in depth in a single pass.

The following Mixture Requirements are applicable for this project:

Mixture Uses(s):	SURFACE	LEVEL BINDER	Partial Depth Patch
PG:	SBS PG 76-22	SBS PG 76-22	SBS PG 76-22
Design Air Voids	4.0% @ N105	4.0% @ N105	4.0% @ N105
Mixture Composition (Gradation Mixture)	IL 9.5 or 12.5	IL 9.5	IL 19.0
Friction Aggregate	E	N/A	D
20 Year ESAL	37.7	37.7	37.7

The Contractor will be required to furnish 140 mm (5 1/2") high brass stencils as approved by the Engineer and install stationing at 250' intervals. Stationing shall be placed on both lanes of 2-lane highways and on the outside lanes in both directions on 4-lane highways. The stations shall be placed 150 mm (6") inside the pavement marking edge so they can be read from the shoulder. This work will be included in the cost of the final pavement surface.

Install rumble strips in all shoulders in accordance with State Standard 642001. Rumble Strips shall be placed on shoulders on both sides of the pavement.

Pavement Marking shall be done according to Standard 780001, except as follows:

1. All words, such as ONLY, shall be 2.4 m (8 feet) high.
2. All non-freeway arrows shall be the large size.
3. The distance between yellow no-passing lines shall be 200 mm (8"), not 180 mm (7") as shown in the detail of Typical Lane and Edge Lines.

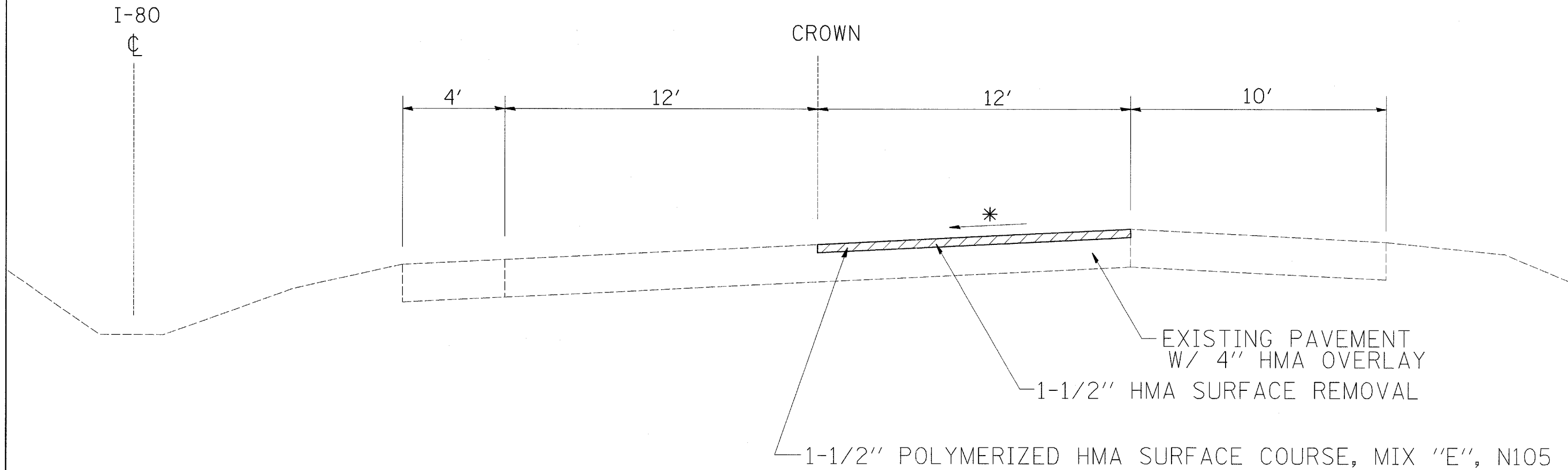
Work on this project will be in progress at the same time as work on two adjacent projects (see Provisions). Work on these projects shall be scheduled to keep interference between all the projects to a minimum. The contractors shall inform each other of progress of the projects and give fair warning to the other contractors when a problem might be encountered.

CADD data will be available to Contractors and Consultants working on this project. This information will be provided upon request as MicroStation CADD files and Geopak coordinate geometry files ONLY. If data is required in other formats it will be your responsibility to make these conversions. If any discrepancy or inconsistency arises between the electronic data and the information on the hard copy, the information on the hard copy should be used. Contact the District's Project Engineer to request these files.

FILE NAME = P11-88 resurfcrvdgn	USER NAME = grantpn	DESIGNED -	REVISED -	STATE OF ILLINOIS DEPARTMENT OF TRANSPORTATION	GENERAL NOTES	F.A.I. RTE.	SECTION	COUNTY	TOTAL SHEETS	SHEET NO.	
		DRAWN -	REVISED -			80	*	ROCK ISLAND	31	5	
		CHECKED -	REVISED -			CONTRACT NO. 64D34					
		DATE -	REVISED -			SCALE:	SHEET NO.	OF	SHEETS	STA.	TO STA.

TYPICAL SECTION

STA 59+48 TO 89+25



BITUMINOUS APPLICATION RATES

SURFACE MIXTURES: 119 LB/SY-IN
 OTHER BITUMINOUS MIXTURES: 112 LB/SY-IN
 BITUMINOUS MATERIAL (PRIME COAT): 0.000286 TON/SY
 AGGREGATE (PRIME COAT): 0.0015 TON/SY


* MAINTAIN EXISTING X-SLOPE

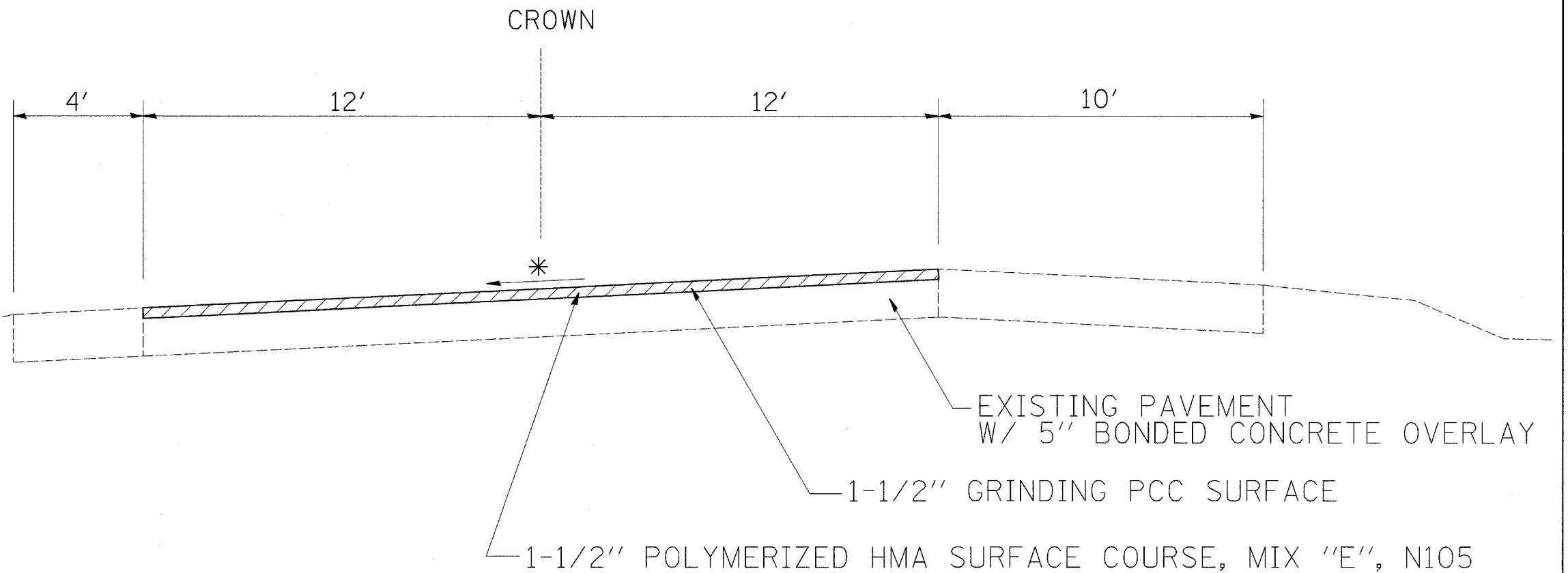
* D2 SPRING PATCHING 2007-2

FILE NAME = P:\1-00 resurf.dgn	USER NAME = grantpm	DESIGNED -	REVISED -	STATE OF ILLINOIS DEPARTMENT OF TRANSPORTATION	TYPICAL SECTIONS			F.A.I. RTE. 80	SECTION *	COUNTY ROCK ISLAND	TOTAL SHEETS 31	SHEET NO. 6
PLOT SCALE = 50.000' / IN.		CHECKED -	REVISED -					SCALE: SHEET NO. OF SHEETS STA. TO STA.			FED. ROAD DIST. NO. [ILLINOIS] FED. AID PROJECT	
PLOT DATE = Thu May 15 11:03:28 2008		DATE -	REVISED -					CONTRACT NO. 64D34				

TYPICAL SECTION

STA 89+25 TO 92+00

I-80




EXISTING PAVEMENT
 W/ 5" BONDED CONCRETE OVERLAY

1-1/2" GRINDING PCC SURFACE

1-1/2" POLYMERIZED HMA SURFACE COURSE, MIX "E", N105

BITUMINOUS APPLICATION RATES

SURFACE MIXTURES: 119 LB/SY-IN
 OTHER BITUMINOUS MIXTURES: 112 LB/SY-IN
 BITUMINOUS MATERIAL (PRIME COAT): 0.000286 TON/SY
 AGGREGATE (PRIME COAT): 0.0015 TON/SY

* MAINTAIN EXISTING X-SLOPE
 X-SLOPE DESIRED 3/16 "/FT. MINIMUM 1/8 "/FT.

* D2 SPRING PATCHING 2007-2

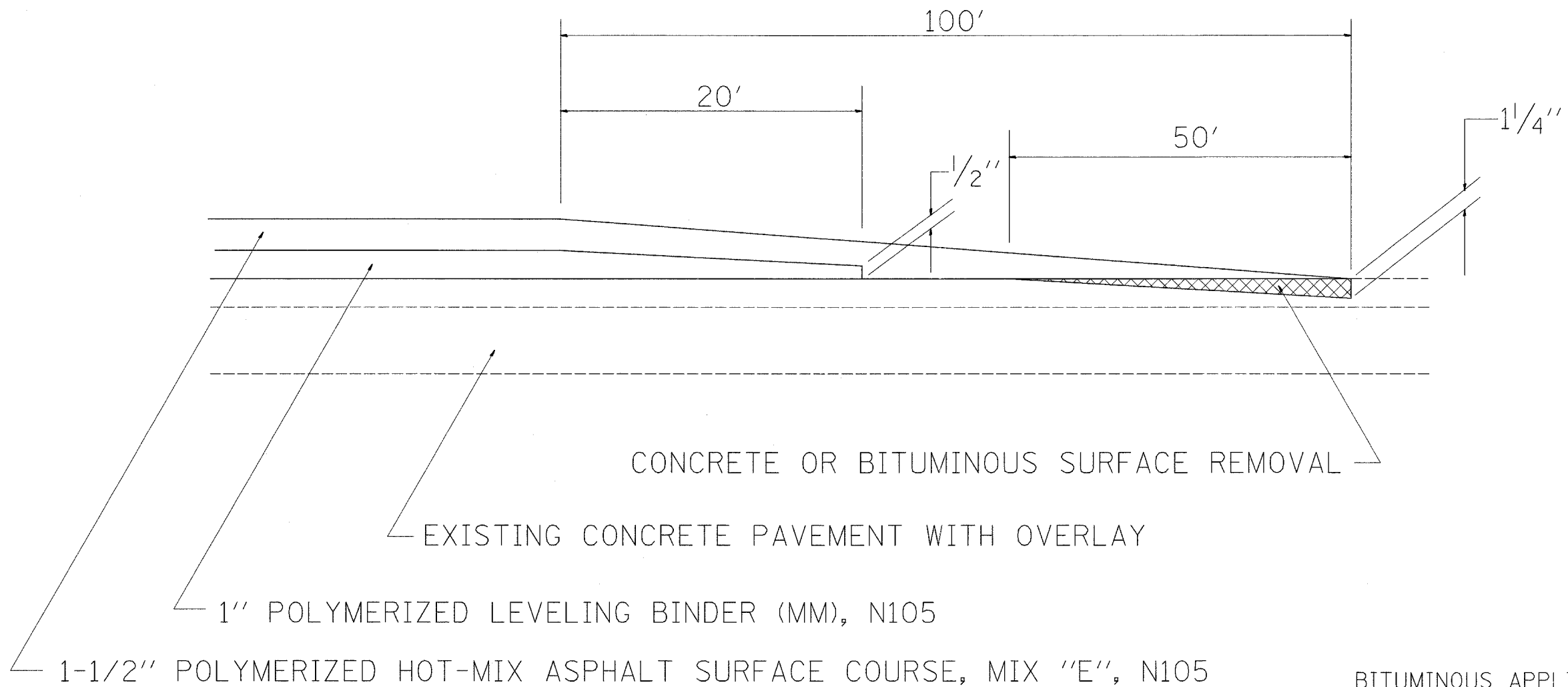
FILE NAME = P:\1-80 resurf.dgn	USER NAME = grantpm	DESIGNED -	REVISED -	STATE OF ILLINOIS DEPARTMENT OF TRANSPORTATION	TYPICAL SECTIONS			F.A.I. RTE. 80	SECTION *	COUNTY ROCK ISLAND	TOTAL SHEETS 31	SHEET NO. 7
								SCALE:	SHEET NO.	OF SHEETS	STA.	TO STA.
					FED. ROAD DIST. NO. ILLINOIS FED. AID PROJECT							
PLOT SCALE = 50.000' / IN.		CHECKED -	REVISED -									
PLOT DATE = Thu May 15 11:03:20 2008		DATE -	REVISED -									

TYPICAL TAPER

STA 95+25 TO 96+25

STA 177+75 TO 178+75

(INTERSTATE)



BITUMINOUS APPLICATION RATES

SURFACE MIXTURES: 119 LB/SY-IN
 OTHER BITUMINOUS MIXTURES: 112 LB/SY-IN
 BITUMINOUS MATERIAL (PRIME COAT): 0.000286 TON/SY
 AGGREGATE (PRIME COAT): 0.0015 TON/SY

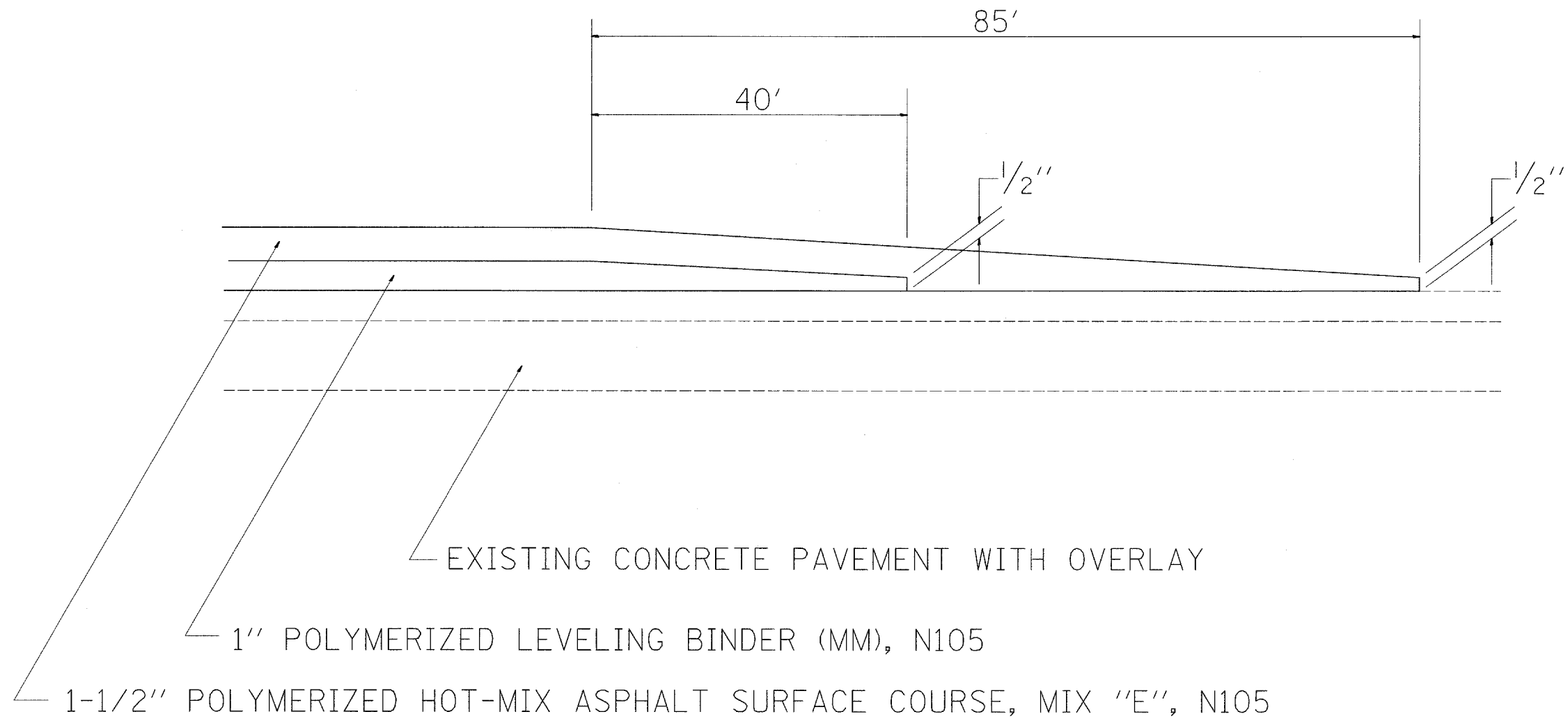
* D2 SPRING PATCHING 2007-2

FILE NAME = P:\1-00 resurf.dgn	USER NAME = grantpm	DESIGNED -	REVISED -	STATE OF ILLINOIS DEPARTMENT OF TRANSPORTATION	TYPICAL SECTIONS			F.A.I. RTE.	SECTION	COUNTY	TOTAL SHEETS	SHEET NO.
	PLOT SCALE = 50.000' / IN.	DRAWN -	REVISED -					80	*	ROCK ISLAND	31	9
	PLOT DATE = Thu May 15 11:03:28 2008	CHECKED -	REVISED -					CONTRACT NO. 64D34				
	DATE -	REVISED -		SCALE:	SHEET NO.	OF	SHEETS	STA.	TO STA.	FED. ROAD DIST. NO. ILLINOIS FED. AID PROJECT		

TYPICAL TAPER

STA 130+49.24 TO 131+35.67

(WEIGH SCALE EXIT)



BITUMINOUS APPLICATION RATES

SURFACE MIXTURES: 119 LB/SY-IN
 OTHER BITUMINOUS MIXTURES: 112 LB/SY-IN
 BITUMINOUS MATERIAL (PRIME COAT): 0.000286 TON/SY
 AGGREGATE (PRIME COAT): 0.0015 TON/SY

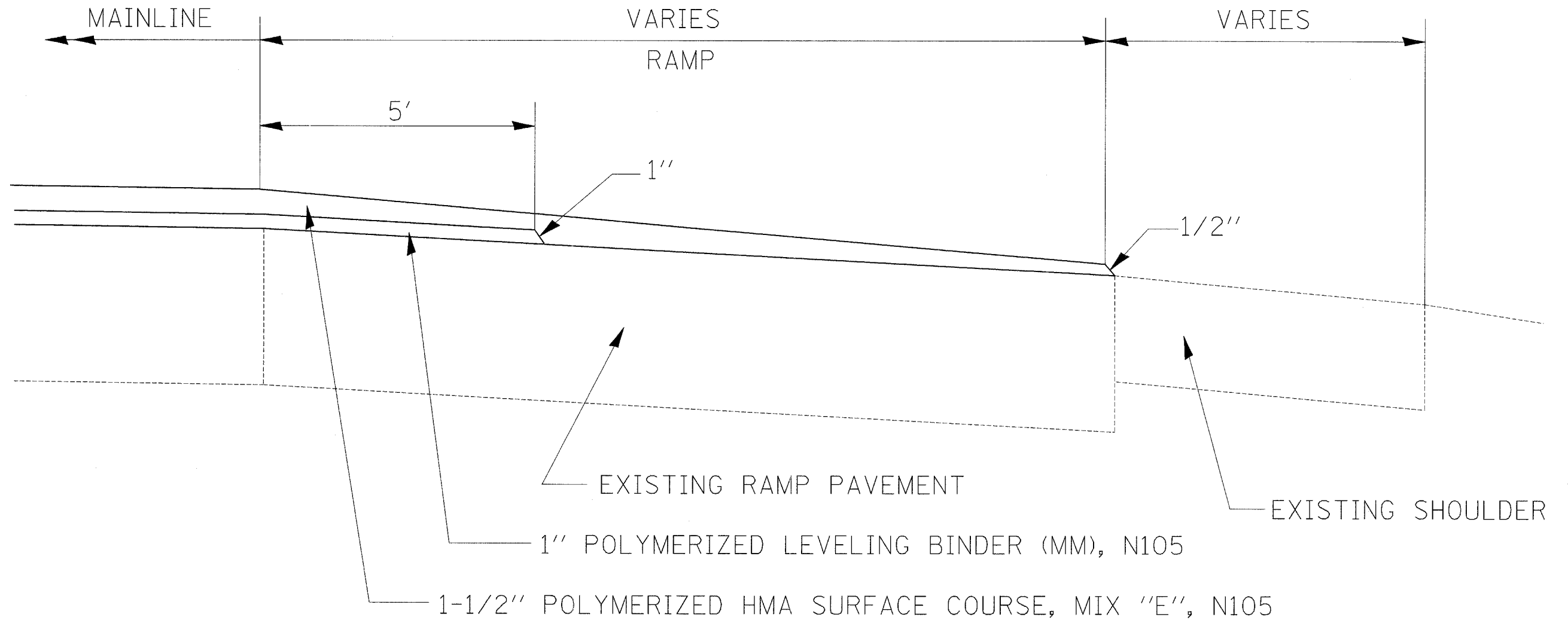
• D2 SPRING PATCHING 2007-2

FILE NAME = P:\1-88 resurfavn.dgn	USER NAME = grantpm	DESIGNED -	REVISED -	STATE OF ILLINOIS DEPARTMENT OF TRANSPORTATION	TYPICAL SECTIONS			F.A.I. RTE.	SECTION	COUNTY	TOTAL SHEETS	SHEET NO.
		DRAWN -	REVISED -					80	*	ROCK ISLAND	31	10
		CHECKED -	REVISED -		SCALE: SHEET NO. OF SHEETS STA. TO STA.			FED. ROAD DIST. NO. ILLINOIS FED. AID PROJECT		CONTRACT NO. 64D34		
		DATE -	REVISED -									

TYPICAL SECTION

STA 99+20 TO 108+00

STA 123+37 TO 131+33



BITUMINOUS APPLICATION RATES

SURFACE MIXTURES: 119 LB/SY-IN

OTHER BITUMINOUS MIXTURES: 112 LB/SY-IN

BITUMINOUS MATERIAL (PRIME COAT): 0.000286 TON/SY

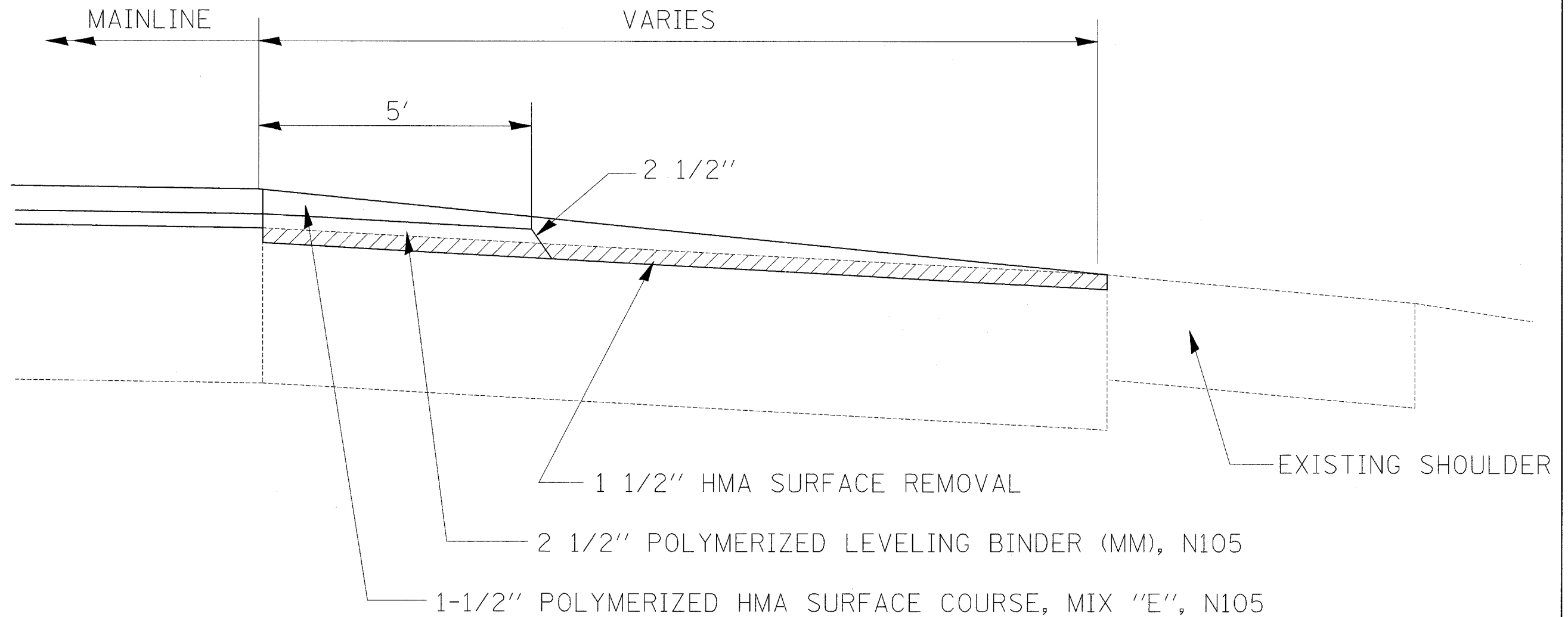
AGGREGATE (PRIME COAT): 0.0015 TON/SY

* D2 SPRING PATCHING 2007-2

FILE NAME =	USER NAME = grantpm	DESIGNED -	REVISED -	STATE OF ILLINOIS DEPARTMENT OF TRANSPORTATION	TYPICAL SECTIONS			F.A.I. RTE.	SECTION	COUNTY	TOTAL SHEETS	SHEET NO.
D:\Projects\Rock_Island\64034.1-80_Spring_Patch_2007-2\1-80_resurfcrv.dgn		DRAWN -	REVISED -					80	*	ROCK ISLAND	31	14
PLOT SCALE = 50.000' / IN.		CHECKED -	REVISED -		SCALE:	SHEET NO.	OF SHEETS	STA.	TO STA.	FED. ROAD DIST. NO.	ILLINOIS FED. AID PROJECT	CONTRACT NO. 64034
PLOT DATE = Thu May 15 13:45:14 2008		DATE -	REVISED -									

TYPICAL SECTION

STA 162+50 TO 169+84.46



BITUMINOUS APPLICATION RATES

SURFACE MIXTURES: 119 LB/SY-IN
 OTHER BITUMINOUS MIXTURES: 112 LB/SY-IN
 BITUMINOUS MATERIAL (PRIME COAT): 0.000286 TON/SY
 AGGREGATE (PRIME COAT): 0.0015 TON/SY

* D2 SPRING PATCHING 2007-2

FILE NAME = D:\Projects\Rock_Island\64034_I-80_Spring_Patch_2007-2\1-80_resurfcrv.dgn	USER NAME = grantpm	DESIGNED -	REVISED -	STATE OF ILLINOIS DEPARTMENT OF TRANSPORTATION	TYPICAL SECTIONS			F.A.I. RTE.	SECTION	COUNTY	TOTAL SHEETS	SHEET NO.
PLOT SCALE = 50.000' / IN.	CHECKED -	REVISED -	REVISED -					80	*	ROCK ISLAND	31	15
PLOT DATE = Thu May 15 13:45:14 2008	DATE -	REVISED -	REVISED -		SCALE: SHEET NO. OF SHEETS STA. TO STA.			FED. ROAD DIST. NO. ILLINOIS FED. AID PROJECT		CONTRACT NO. 64034		

40600215 POLYMERIZED BITUMINOUS MATERIALS (PRIME COAT)			
TON	LOCATION		REMARKS
	STA	to STA	
0.34	59 + 48	63 + 90	RESURFACING DRIVING LANE 2 APPLICATION
1.91	64 + 15	89 + 25	RESURFACING DRIVING LANE 2 APPLICATION
0.42	89 + 25	92 + 00	EB MAINLINE, 2 APPLICATION
12.78	95 + 25	179 + 05	EB MAINLINE, 2 APPLICATION
0.16	89 + 25	92 + 00	EB SHOULDERS, 2 APPLICATIONS
4.79	95 + 25	179 + 05	EB SHOULDERS, 2 APPLICATIONS
0.04			ALONG EDGE OF VISITOR CENTER OFF RAMP, 2 APPLICATION
0.05			ALONG EDGE OF VISITOR CENTER ON RAMP, 2 APPLICATION
0.48			EB WEIGH SCALE OFF RAMP
0.43			EB WEIGH SCALE ON RAMP
TOTAL = 21.40			

40600300 AGGREGATE (PRIME COAT)			
TON	LOCATION		REMARKS
	STA	to STA	
0.88	59 + 48	63 + 90	DRIVING LANE ONLY
5.02	64 + 15	89 + 25	DRIVING LANE ONLY
1.10	89 + 25	92 + 00	MAINLINE
33.52	95 + 25	179 + 05	MAINLINE
0.41	89 + 25	92 + 00	SHOULDERS
12.57	95 + 25	179 + 05	SHOULDERS
0.11			ALONG EDGE OF VISITOR CENTER OFF RAMP, 2 APPLICATION
0.13			ALONG EDGE OF VISITOR CENTER ON RAMP, 2 APPLICATION
1.26			EB WEIGH SCALE OFF RAMP
1.13			EB WEIGH SCALE ON RAMP
TOTAL = 56.14			

40600555 LEVELING BINDER (HAND METHOD), N105			
TON	LOCATION		REMARKS
	STA	to STA	
52.02	95 + 15	178 + 75	ENGINEERS DISCUSSION --- LEFT PAVEMENT EDGE
156.05	95 + 15	178 + 75	ENGINEERS DISCUSSION --- RIGHT PAVEMENT EDGE
TOTAL = 208.07			

40600855 POLYMERIZED LEVELING BINDER (MACHINE METHOD), N105			
TON	LOCATION		REMARKS
	STA	to STA	
1,525.07	96 + 05	177 + 75	MAINLINE
2.49	177 + 75	177 + 95	EAST BUTT JOINT, MAILINE
254.18	96 + 05	177 + 75	4' LEFT SHOULDER
0.41	177 + 75	177 + 95	4' LEFT SHOULDER
15.15	96 + 05	99 + 20	2' RIGHT SHOULDER
34.22	99 + 20	108 + 00	5' RIGHT SHOULDER
23.91	108 + 00	123 + 37	2' RIGHT SHOULDER
30.96	123 + 37	131 + 33	5' RIGHT SHOULDER
72.21	131 + 33	177 + 75	2' RIGHT SHOULDER
0.21	177 + 75	177 + 95	2' RIGHT SHOULDER
58.24			VISITOR CENTER ON RAMP
1.23			BUTT JOINT, VISITOR CENTER
59.27			WEIGH SCALE OFF RAMP
1.23			TAPER, WEIGH SCALE OFF RAMP
62.84	162 + 50	169 + 84	WEIGH SCALE ON RAMP
2.12			WEIGH SCALE BUTT JOINT, OFF RAMP
TOTAL = 2,143.72			

40600982 HOT-MIX ASPHALT SURFACE REMOVAL - BUTT JOINT			
SQ. YD.	LOCATION		REMARKS
	STA	to STA	
50.00	95 + 25	95 + 75	SHOULDER, RIGHT & LEFT
86.1			VISITOR CENTER ON RAMP
0			TAPER, NO GRINDING --- EB WEIGH SCALE OFF RAMP
38.89			EB WEIGH SCALE RAMP
72.8			EB WEIGH SCALE ON RAMP
133.33	178 + 25	178 + 75	MAINLINE
50.00	178 + 25	178 + 75	SHOULDER, RIGHT & LEFT
TOTAL = 431.12			

40600985 PORTLAND CEMENT CONCRETE SURFACE REMOVAL - BUTT JOINT			
SQ. YD.	LOCATION		REMARKS
	STA	to STA	
133.33	95 + 25	95 + 75	BOTH LANES
TOTAL = 133.33			

40600990 TEMPORARY RAMP			
SQ. YD.	LOCATION		REMARKS
	STA	to STA	
14.44			VISITOR CENTER ON RAMP
31.11			EB WEIGH SCALE ON RAMP
73.33	178 + 25	178 + 75	
TOTAL = 118.89			

40603575 POLYMERIZED HOT-MIX ASPHALT SURFACE COURSE, MIX "E", N105			
TON	LOCATION		REMARKS
	STA	to STA	
52.598	59 + 48	63 + 90	1 1/2" RESURFACE ONLY
OMISSION	63 + 90	64 + 15	WEATHER SENSOR --- OMIT
298.69	64 + 15	89 + 25	1 1/2" RESURFACE ONLY
65.45	89 + 25	92 + 00	1 1/2" MAINLINE RESURFACING, BOTH LANES
OMISSION	92 + 00	95 + 25	WEIGH-IN-MOTION SCALE --- OMIT
1,963.50	95 + 25	177 + 75	MAINLINE
28.36	177 + 75	179 + 05	EAST BUTT JOINT, MAILINE
327.25	95 + 25	177 + 75	4' LEFT SHOULDER
3.44	177 + 75	179 + 05	4' LEFT SHOULDER
19.59	95 + 25	99 + 20	5' RIGHT SHOULDER
122.17	99 + 20	108 + 00	VISITOR CENTER ON RAMP
76.21	108 + 00	123 + 37	5' RIGHT SHOULDER
110.51	123 + 37	131 + 33	WEIGH SCALE OFF RAMP
230.17	131 + 33	177 + 75	5' RIGHT SHOULDER
4.30	177 + 75	179 + 05	5' RIGHT SHOULDER
8.32			VISITOR CENTER ON RAMP --- BUTT JOINT
10.90	taper		WEIGH SCALE OFF RAMP --- TAPER
24.23	butt jt		WEIGH SCALE ON RAMP --- BUTT JOINT
94.68	162 + 50	169 + 84	WEIGH SCALE ON RAMP
TOTAL = 3,440.36			

44000155 HOT-MIX ASPHALT SURFACE REMOVAL, 1 1/2"			
SQ YD	LOCATION		REMARKS
	STA	to STA	
589.33	59 + 48	63 + 90	DRIVING LANE ONLY
OMISSION	63 + 90	64 + 15	WEATHER SENSOR --- OMIT
3346.67	64 + 15	89 + 25	DRIVING LANE ONLY
942.67	162 + 50	169 + 85	SCALE ON RAMP
TOTAL = 4,878.67			

FILE NAME = P:\1-80 resurfavr.dgn	USER NAME = grantpm	DESIGNED -	REVISED -	STATE OF ILLINOIS DEPARTMENT OF TRANSPORTATION	SCHEDULE OF QUANTITIES			F.A.I. RTE.	SECTION	COUNTY	TOTAL SHEETS	SHEET NO.
		DRAWN -	REVISED -					80	*	ROCK ISLAND	31	16
		CHECKED -	REVISED -		SCALE: SHEET NO. OF SHEETS STA. TO STA.			CONTRACT NO. 64D34				
		DATE -	REVISED -		FED. ROAD DIST. NO. ILLINOIS FED. AID PROJECT			* D2 SPRING PATCHING 2007-2				

60300105 FRAMES AND GRATES TO BE ADJUSTED

EACH	LOCATION	
	STA	
1.00	162 + 00	RIGHT, GORE AREA
TOTAL =	1.00	

64200105 SHOULDER RUMBLE STRIP

FOOT	LOCATION	
	STA to STA	
8,350.00	95 + 25 178 + 75	LEFT SHOULDER
375.00	95 + 25 99 + 00	RIGHT SHOULDER
1,280.00	110 + 00 122 + 80	RIGHT SHOULDER
2,365.00	131 + 65 155 + 30	RIGHT SHOULDER
875.00	170 + 00 178 + 75	RIGHT SHOULDER
TOTAL =	13,245.00	

70300100 SHORT-TERM PAVEMENT MARKING

FOOT	LOCATION	
	STA to STA	
4" WHITE SKIP DASH		
1500.00	59 + 48 89 + 25	MAINLINE, 2 APPLICATIONS
4500.00	89 + 25 179 + 25	MAINLINE, 2 APPLICATIONS
87.50		REST AREA ON RAMP, 2 APPLICATIONS
62.50		SCALE OFF RAMP, GORE, 2 APPLICATIONS
95.00		SCALE ON RAMP, GORE, 2 APPLICATIONS
4" WHITE SOLID		
5954.00	59 + 48 89 + 25	RIGHT EDGE LINE, 2 APPLICATIONS
450.00		REST AREA ON RAMP GORE, 2 APPLICATIONS
2120.00		REST AREA ON RAMP EDGE OF PAVT, 2 APPLICATIONS
2430.00	110 + 60 122 + 75	MAINLINE, EDGE OF PAVT, 2 APPLICATIONS
1850.00		SCALE OFF RAMP, EDGE OF PAVT, 2 APPLICATIONS
320.00		SCALE OFF RAMP, GORE, 2 APPLICATIONS
4450.00	132 + 75 155 + 00	MAINLINE, EDGE OF PAVT, 2 APPLICATIONS
630.00		SCALE ON RAMP GORE, 2 APPLICATIONS
590.00		SCALE ON RAMP EDGE OF PAVT, 2 APPLICATIONS
1380.00	172 + 35 179 + 25	MAINLINE, EDGE OF PAVT, 2 APPLICATIONS
4" YELLOW SOLID		
18000.00	89 + 25 179 + 25	MAINLINE, 2 APPLICATIONS
TOTAL =	44,419.00	

70301000 WORK ZONE PAVEMENT MARKING REMOVAL

SQ FT	LOCATION	
	STA to STA	
4" WHITE SKIP DASH		
250.00	59 + 48 89 + 25	MAINLINE
750.00	89 + 25 179 + 25	MAINLINE
14.58		REST AREA ON RAMP
10.42		SCALE OFF RAMP, GORE
15.83		SCALE ON RAMP, GORE
4" WHITE SOLID		
992.33	59 + 48 89 + 25	MAINLINE
75.00		REST AREA ON RAMP GORE
353.33		REST AREA ON RAMP EDGE OF PAVT
405.00	110 + 60 122 + 75	MAINLINE, EDGE OF PAVT
308.33		SCALE OFF RAMP, EDGE OF PAVT
53.33		SCALE OFF RAMP, GORE
741.67	132 + 75 155 + 00	MAINLINE, EDGE OF PAVT
105.00		SCALE ON RAMP GORE
98.33		SCALE ON RAMP EDGE OF PAVT
230.00	172 + 35 179 + 25	MAINLINE, EDGE OF PAVT
4" YELLOW SOLID		
3000.00	89 + 25 179 + 25	MAINLINE
TOTAL =	7,403.17	

78001110 PAINT PAVEMENT MARKING - LINE 4"

FOOT	LOCATION	
	STA to STA	
YELLOW - SOLID		
600	89 + 25 92 + 25	2 APPLICATIONS, MAINLINE, LEFT EDGE LINE
16950	95 + 25 180 + 00	2 APPLICATIONS, MAINLINE, LEFT EDGE LINE
subtotal	17550	
WHITE - SOLID		
1764	59 + 48 88 + 30	2 APPLICATIONS, MAINLINE, RIGHT EDGE LINE
1250	78 + 75 85 + 00	2 APPLICATIONS, MAINLINE, RIGHT EDGE LINE
1700	90 + 00 98 + 50	2 APPLICATIONS, MAINLINE, RIGHT EDGE LINE
2700	110 + 50 124 + 00	2 APPLICATIONS, MAINLINE, RIGHT EDGE LINE
3800	135 + 00 154 + 00	2 APPLICATIONS, MAINLINE, RIGHT EDGE LINE
1650	171 + 75 180 + 00	2 APPLICATIONS, MAINLINE, RIGHT EDGE LINE
subtotal	12864	
TOTAL =	30,414.00	

78001130 PAINT PAVEMENT MARKING - LINE 6"

FOOT	LOCATION	
	STA to STA	
WHITE - SKIP		
6050	59 + 00 180 + 00	2 APPLICATIONS, CENTERLINE SKIP-DASH
TOTAL =	6,050.00	

78001140 PAINT PAVEMENT MARKING - LINE 8"

FOOT	LOCATION	
	STA to STA	
WHITE - SKIP		
88	70 + 25 72 + 00	RAMP MERGE AREA, 2 APPLICATIONS
168	100 + 00 103 + 35	RAMP MERGE AREA, 2 APPLICATIONS
488	155 + 10 164 + 85	RAMP MERGE AREA, 2 APPLICATIONS
subtotal	744	
WHITE - SOLID		
800	86 + 00 90 + 00	2 APPLICATIONS, MAINLINE, OFF-RAMP GORE AREA
450	86 + 00 88 + 00	2 APPLICATION, EXIT-RAMP
230	98 + 85 100 + 00	ENTRANCE-RAMP, 2 APPLICATION
1050	129 + 75 135 + 00	2 APPLICATIONS, MAINLINE, OFF-RAMP GORE AREA
680	129 + 85 133 + 00	2 APPLICATION, EXIT-RAMP
320	153 + 50 155 + 10	ENTRANCE-RAMP, 2 APPLICATION
subtotal	3530	
TOTAL =	4,274.00	

78001150 PAINT PAVEMENT MARKING - LINE 12"

FOOT	LOCATION	
	STA to STA	
WHITE - SOLID		
400.00	86 + 00 89 + 50	2 APPLICATION, EXIT-RAMP
40.00	130 + 00 131 + 25	2 APPLICATION, WEIGH SCALE OFF-RAMP
TOTAL =	440.00	

78100100 RAISED REFLECTIVE PAVEMENT MARKER

EACH	LOCATION	
	STA to STA	
153.00	59 + 00 180 + 00	ONE-WAY CRYSTAL @ 80 FOOT CENTERS
TOTAL =	153.00	

Z0029200 GRINDING PORTLAND CEMENT CONCRETE SURFACE

SQ YD	LOCATION	
	STA to STA	
733.33	89 + 25 92 + 00	BOTH LANES, 1 1/2" REMOVAL
TOTAL =	733.33	

STATION	REMARKS	LENGTH OF PATCH		PARTIAL DEPTH REMOVAL X4401705		PARTIAL DEPTH PATCHING X4421000		SEVERITY	CL D PATCH T3 44201843	CL D PATCH T4 44201845	SUB MAT, A 31100100
		LT LANE (feet)	RT LANE (feet)	LT LANE (yd ²)	RT LANE (yd ²)	LT LANE (ton)	RT LANE (ton)		16" (SQ YD)	16" (SQ YD)	12" (ton)
EASTBOUND LANES ONLY											
89 + 43			6		8.0		2.4				
90 + 06			6		8.0		2.4				
90 + 93			17		22.7		6.7				
91 + 68			34		45.3		13.5				
95 + 40			28		37.3		11.1				
96 + 26			6		8.0		2.4				
96 + 57			15		20.0		6.0				
96 + 94			6		8.0		2.4				
97 + 12		10		13.3		4.0					
97 + 20			10		13.3		4.0				
97 + 61			19		25.3		7.5				
99 + 05			40		53.3		15.9				
99 + 35		6		8.0		2.4		X			
100 + 18	Pv't stamp STA 100+00		15		20.0		6.0	X			
100 + 33		10		13.3		4.0					
100 + 70			55		73.3		21.8				
100 + 94		10		13.3		4.0					
101 + 44		43		57.3		17.1					
101 + 51			28		37.3		11.1	X			
102 + 39			25		33.3		9.9				
104 + 01			13		17.3		5.2	X			
104 + 33			12		16.0		4.8				
104 + 72			67		89.3		26.6	XX			
104 + 84		8		10.7		3.2					
105 + 37		10		13.3		4.0					
107 + 72			47		62.7		18.6	XX			
108 + 36		6		8.0		2.4					
109 + 20			6		8.0		2.4				
110 + 05			6		8.0		2.4				
110 + 85			6		8.0		2.4				
112 + 47			17		22.7		6.7				
112 + 68		6		8.0		2.4					
112 + 87			52		69.3		20.6	XX			
113 + 37		6		8.0		2.4					
113 + 81			28		37.3		11.1	X			
114 + 43			6		8.0		2.4				
114 + 89			26		34.7		10.3				
115 + 26		10		13.3		4.0		X			
115 + 56			54		72.0		21.4				
116 + 54			46		61.3		18.2	X			
117 + 48			6		8.0		2.4				
118 + 15			6		8.0		2.4				
119 + 12			23		30.7		9.1	X			

FILE NAME = P:\1-00 resurfvr.dgn	USER NAME = grantpm	DESIGNED - DRAWN -	REVISED - REVISED -	STATE OF ILLINOIS DEPARTMENT OF TRANSPORTATION	PATCHING SCHEDULE	F.A.I. RTE. 80	SECTION *	COUNTY ROCK ISLAND	TOTAL SHEETS 31	SHEET NO. 18	
	PLOT SCALE = 50,000' / IN.	CHECKED -	REVISED -			SCALE:	SHEET NO.	OF	SHEETS	STA.	TO STA.
	PLOT DATE = Thu May 15 11:03:27 2008	DATE -	REVISED -			FED. ROAD DIST. NO.	ILLINOIS FED. AID PROJECT				
CONTRACT NO. 64D34											

STATION	REMARKS	LENGTH OF PATCH		PARTIAL DEPTH REMOVAL X4401705		PARTIAL DEPTH PATCHING X4421000		SEVERITY	CL D PATCH T3 44201843	CL D PATCH T4 44201845	SUB MAT, A 31100100
		LT LANE (feet)	RT LANE (feet)	LT LANE (yd ²)	RT LANE (yd ²)	LT LANE (ton)	RT LANE (ton)		16" (SQ YD)	16" (SQ YD)	12" (ton)
119 + 92			18		24.0		7.1	X			
120 + 57			59		78.7		23.4	X			
121 + 58		50		66.7		19.8					
122 + 17			8		10.7		3.2	XX			
122 + 25		30		40.0		11.9		X			
122 + 51			54		72.0		21.4	X			
123 + 51			6		8.0		2.4				
124 + 22			30		40.0		11.9	X			
124 + 22	TRUCK RAMP		6		8.0		2.4				
124 + 75			6		8.0		2.4				
124 + 90	Pv' t Stamp STA 125+00										
125 + 04			50		66.7		19.8	X			
125 + 85			6		8.0		2.4				
127 + 35			6		8.0		2.4				
127 + 95			6		8.0		2.4				
130 + 32		248		330.7		98.4		XX			
130 + 47			257		342.7		101.9	XX			
133 + 26			110		146.7		43.6	XXX			
133 + 75		33		44.0		13.1					
134 + 23		12		16.0		4.8					
134 + 63			44		58.7		17.5	XX			
135 + 06		30		40.0		11.9		X			
136 + 36		101		134.7		40.1		X			
136 + 56			55		73.3		21.8	XXX			
137 + 27			77		102.7		30.5	XX			
137 + 55		6		8.0		2.4					
138 + 26			119		158.7		47.2	XXX			
138 + 60		10		13.3		4.0					
138 + 98		10		13.3		4.0					
139 + 55		25		33.3		9.9		X			
139 + 98			37		49.3		14.7	XX			
140 + 61		30		40.0		11.9					
140 + 83			6		8.0		2.4	X			
141 + 06			10		13.3		4.0	X			
141 + 34			110		146.7		43.6	XXX			
141 + 96		34		45.3		13.5					
142 + 80			6		8.0		2.4	X			
143 + 15			6		8.0		2.4				
143 + 19		10		13.3		4.0					
143 + 60		10		13.3		4.0					
143 + 64			51		68.0		20.2				
143 + 95		30		40.0		11.9					
144 + 43			47		62.7		18.6	X			
144 + 46		42		56.0		16.7		XX			

FILE NAME = P:\1-80 resurf\cvr\dgn

USER NAME = grantpm
 PLOT SCALE = 50.000' / IN.
 PLOT DATE = Thu May 15 11:03:27 2008

DESIGNED -
 DRAWN -
 CHECKED -
 DATE -

REVISED -
 REVISED -
 REVISED -
 REVISED -

**STATE OF ILLINOIS
 DEPARTMENT OF TRANSPORTATION**

PATCHING SCHEDULE

SCALE: SHEET NO. OF SHEETS STA. TO STA.

F.A.I. RTE. 80	SECTION *	COUNTY ROCK ISLAND	TOTAL SHEETS 31	SHEET NO. 19
FED. ROAD DIST. NO.		ILLINOIS FED. AID PROJECT		
CONTRACT NO. 64D34				

STATION	REMARKS	LENGTH OF PATCH		PARTIAL DEPTH REMOVAL X4401705		PARTIAL DEPTH PATCHING X4421000		SEVERITY	CL D PATCH T3 44201843	CL D PATCH T4 44201845	SUB MAT, A 31100100
		LT LANE (feet)	RT LANE (feet)	LT LANE (yd ²)	RT LANE (yd ²)	LT LANE (ton)	RT LANE (ton)		16" (SQ YD)	16" (SQ YD)	12" (ton)
145 + 15		10		13.3		4.0					
145 + 23			6		8.0		2.4				
145 + 42								XX			
145 + 93		74		98.7		29.4		X			
146 + 67			70		93.3		27.8				
147 + 73	Pv + Stamp STA147+50		30		40.0		11.9	X			
148 + 10		35		46.7		13.9		X			
148 + 19			27		36.0		10.7	X			
148 + 63			61		81.3		24.2	XX			
148 + 75		60		80.0		23.8		X			
149 + 34			6		8.0		2.4				
149 + 72		6		8.0		2.4					
150 + 01			65		86.7		25.8	X			
150 + 38		20		26.7		7.9		X			
150 + 80			10		13.3		4.0				
151 + 23			30		40.0		11.9	X			
151 + 76			64		85.3		25.4	XXX			
151 + 85		6		8.0		2.4					
152 + 20		20		26.7		7.9		XX			
152 + 53			6		8.0		2.4				
152 + 55		6		8.0		2.4					
152 + 79		20		26.7		7.9		X			
153 + 02			25		33.3		9.9	XX			
153 + 34		22		29.3		8.7		X			
153 + 74			23		30.7		9.1				
154 + 28			74		98.7		29.4	XX			
154 + 70		15		20.0		6.0		X			
155 + 01		39		52.0		15.5					
157 + 54			6		8.0		2.4	X			
158 + 20			6		8.0		2.4				
158 + 74			17		22.7		6.7	X			
158 + 90		6		8.0		2.4					
159 + 26			6		8.0		2.4				
159 + 49			16		21.3		6.3				
159 + 91			18		24.0		7.1				
160 + 30		6		8.0		2.4					
161 + 34			6		8.0		2.4				
161 + 85		10		13.3		4.0					
163 + 91			6		8.0		2.4				
165 + 09			10		13.3		4.0	X			
165 + 38			52		69.3		20.6				
167 + 56			10		13.3		4.0	X			
168 + 00		10		13.3		4.0					
169 + 21			33		44.0		13.1	X			

FILE NAME =
P:\11-00 resurfconvr.dgn

USER NAME = grantpm
PLOT SCALE = 50.000' / IN.
PLOT DATE = Thu May 15 11:03:28 2008

DESIGNED -
DRAWN -
CHECKED -
DATE -

REVISED -
REVISED -
REVISED -
REVISED -

**STATE OF ILLINOIS
DEPARTMENT OF TRANSPORTATION**

PATCHING SCHEDULE

SCALE: SHEET NO. OF SHEETS STA. TO STA.

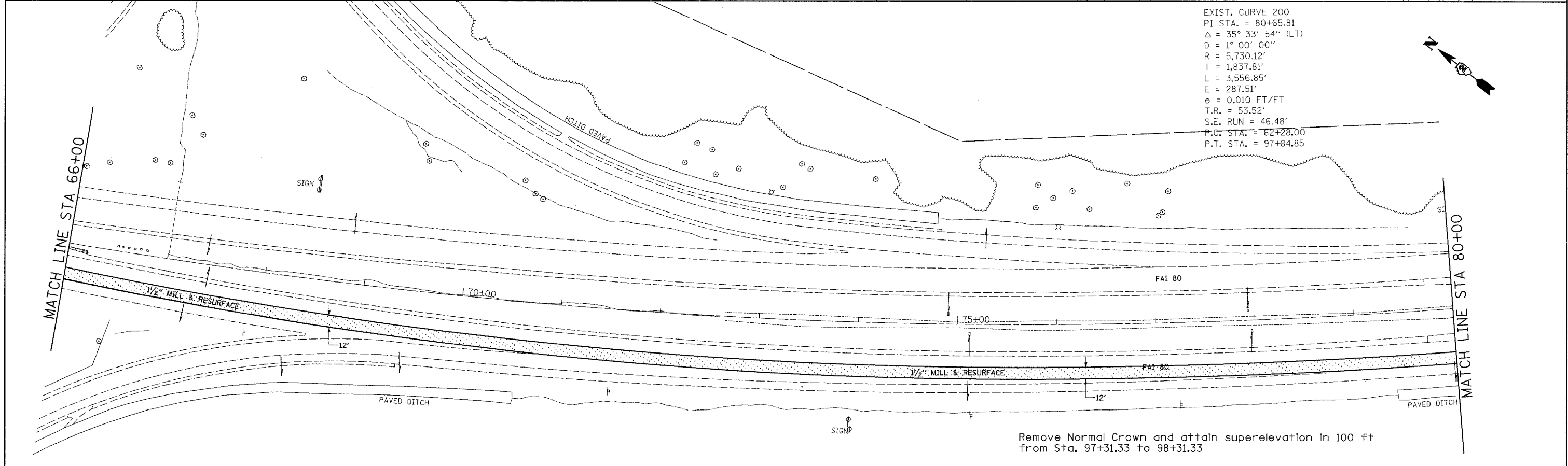
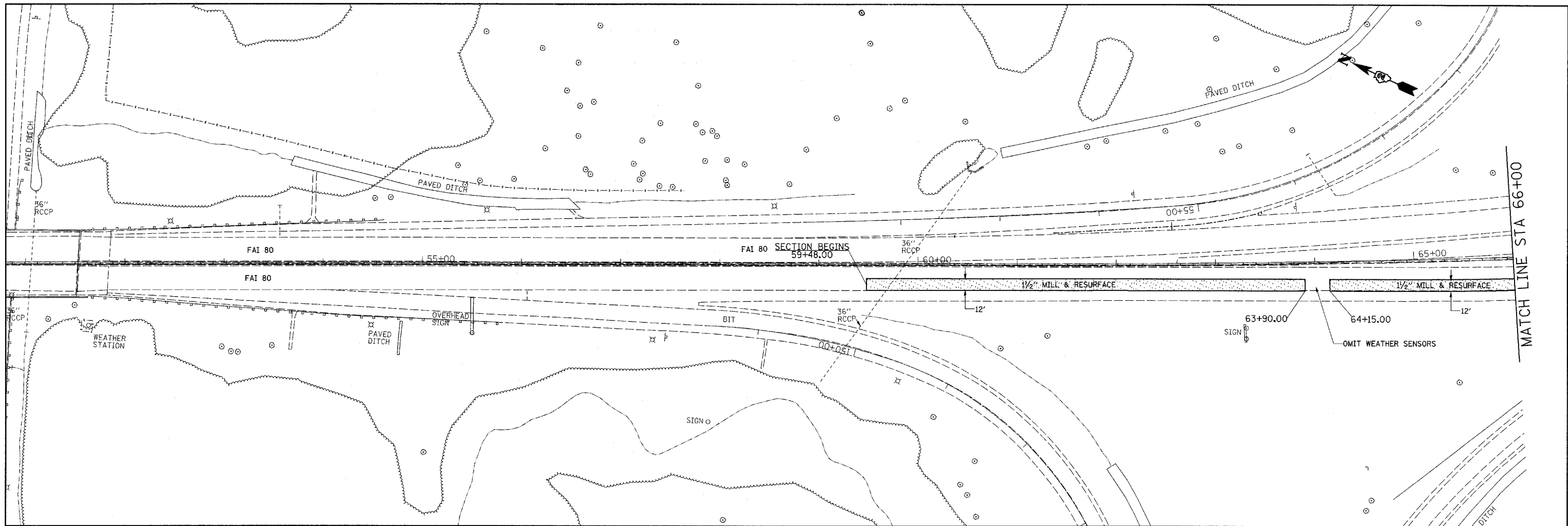
F.A.I. RTE. 80	SECTION *	COUNTY ROCK ISLAND	TOTAL SHEETS 31	SHEET NO. 20
FED. ROAD DIST. NO.		ILLINOIS FED. AID PROJECT CONTRACT NO. 64D34		

STATION	REMARKS	LENGTH OF PATCH		PARTIAL DEPTH REMOVAL X4401705		PARTIAL DEPTH PATCHING X4421000		SEVERITY	CL D PATCH T3 44201843	CL D PATCH T4 44201845	SUB MAT, A 31100100
		LT LANE (feet)	RT LANE (feet)	LT LANE (yd ²)	RT LANE (yd ²)	LT LANE (ton)	RT LANE (ton)		16" (SQ YD)	16" (SQ YD)	12" (ton)
169 + 75			26		34.7		9.7				
170 + 46			10		13.3		3.7	X			
171 + 24			6		8.0		2.2				
171 + 55			6		8.0		2.2	X			
171 + 80			74		98.7		27.6	XX			
172 + 30		30		40.0		11.2		X			
172 + 66			6		8.0		2.2				
173 + 16		27		36.0		10.1					
173 + 57			6		8.0		2.2				
173 + 88			19		25.3		7.1				
174 + 43			10		13.3		3.7				
174 + 84		45		60.0		16.8					
175 + 67			6		8.0		2.2				
175 + 88		97		129.3		36.2		X			
176 + 07			30		40.0		11.2	X			
176 + 96			6		8.0		2.2				
177 + 10		34		45.3		12.7		X			
177 + 25			15		20.0		5.6				
177 + 42											
177 + 60			20		26.7		7.5				
177 + 73											
178 + 21		6		8.0		2.2					
SUB-TOTAL =				1920.0	3792.0	537.6	1061.8				
CONTINGENCIES				249.6	644.6	69.9	180.5		99.09	330.31	293.4
TOTAL				6606		1849.7			99.1	330.3	293.4

NOTE: EXISTING OVERLAY FAILURE SEVERITY RATINGS

- LOW
- X MODERATE
- XX MEDIUM
- XXX HIGH

FILE NAME = P:\1-80 resurfvr.dgn	USER NAME = grantpm	DESIGNED - DRAWN -	REVISED - REVISED -	STATE OF ILLINOIS DEPARTMENT OF TRANSPORTATION	PATCHING SCHEDULE	F.A.I. RTE. 80	SECTION *	COUNTY ROCK ISLAND	TOTAL SHEETS 31	SHEET NO. 21
PLOT SCALE = 50.000' / IN.	CHECKED -	REVISED -	SCALE:			SHEET NO. OF SHEETS STA. TO STA.	FED. ROAD DIST. NO.	ILLINOIS FED. AID PROJECT	CONTRACT NO. 64D34	
PLOT DATE = Thu May 15 11:03:28 2008	DATE -	REVISED -	* D2 SPRING PATCHING 2007-2							



EXIST. CURVE 200
 PI STA. = 80+65.81
 $\Delta = 35^\circ 33' 54''$ (LT)
 $D = 1^\circ 00' 00''$
 $R = 5,730.12'$
 $T = 1,837.81'$
 $L = 3,556.85'$
 $E = 287.51'$
 $e = 0.010$ FT/FT
 $T.R. = 53.52'$
 $S.E. RUN = 46.48'$
 $P.C. STA. = 62+28.00$
 $P.T. STA. = 97+84.85$

Remove Normal Crown and attain superelevation in 100 ft from Sta. 97+31.33 to 98+31.33

FILE NAME =
 Pa1-80 resurfplndgn

USER NAME = grantpm
 PLOT SCALE = 50.0000' / IN.
 PLOT DATE = Thu May 15 11:21:16 2008

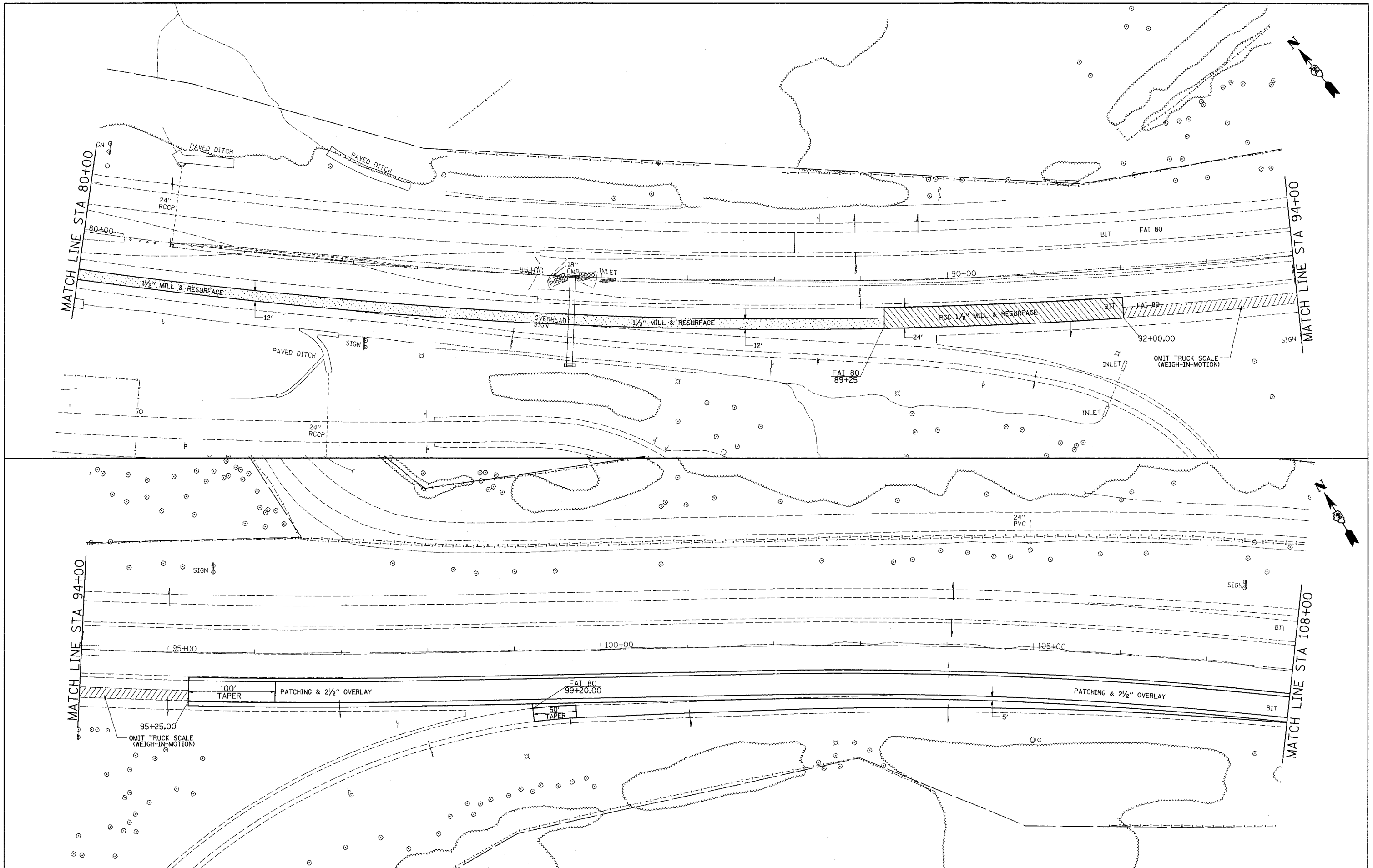
DESIGNED -
 DRAWN -
 CHECKED -
 DATE -

REVISED -
 REVISED -
 REVISED -
 REVISED -

STATE OF ILLINOIS
DEPARTMENT OF TRANSPORTATION

I-80
 SCALE: SHEET NO. OF SHEETS STA. TO STA.

F.A.I. RTE.	SECTION	COUNTY	TOTAL SHEETS	SHEET NO.
80	*	ROCK ISLAND	31	22
FED. ROAD DIST. NO.			ILLINOIS FED. AID PROJECT	
			CONTRACT NO. 64D34	



FILE NAME =
P:\1-80 resurf\rdn

USER NAME = grantpm
PLOT SCALE = 50.0000' / IN.
PLOT DATE = Thu May 15 11:01:16 2008

DESIGNED -
DRAWN -
CHECKED -
DATE -

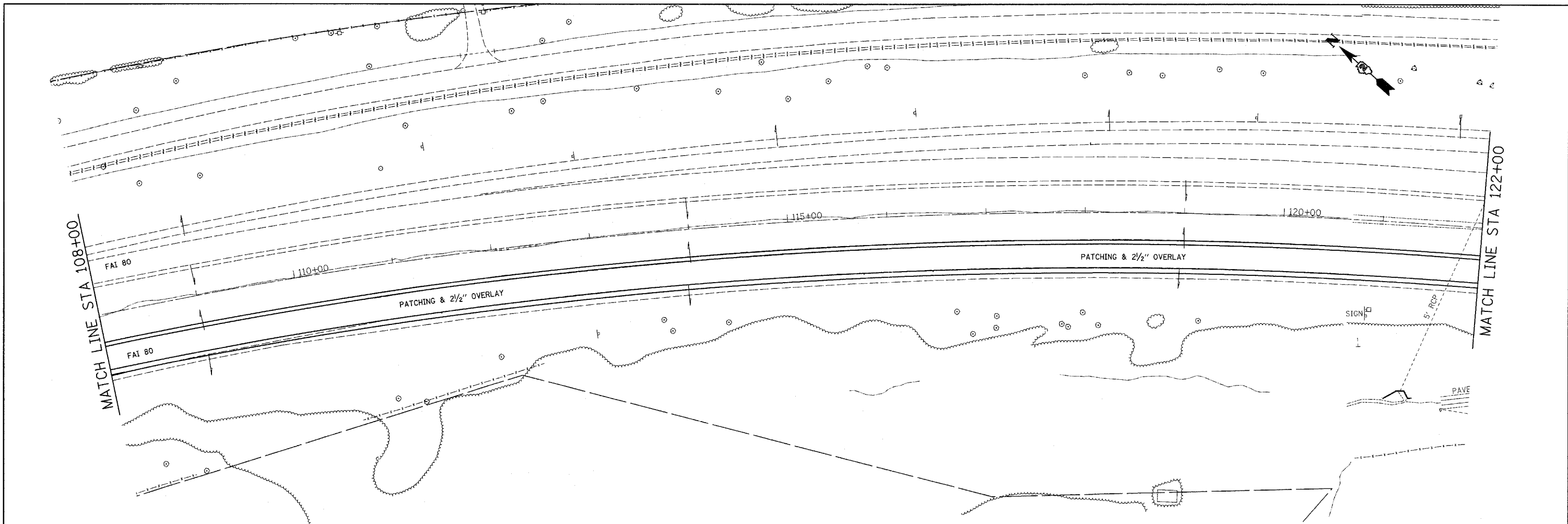
REVISED -
REVISED -
REVISED -
REVISED -

**STATE OF ILLINOIS
DEPARTMENT OF TRANSPORTATION**

I-80

SCALE: SHEET NO. OF SHEETS STA. TO STA.

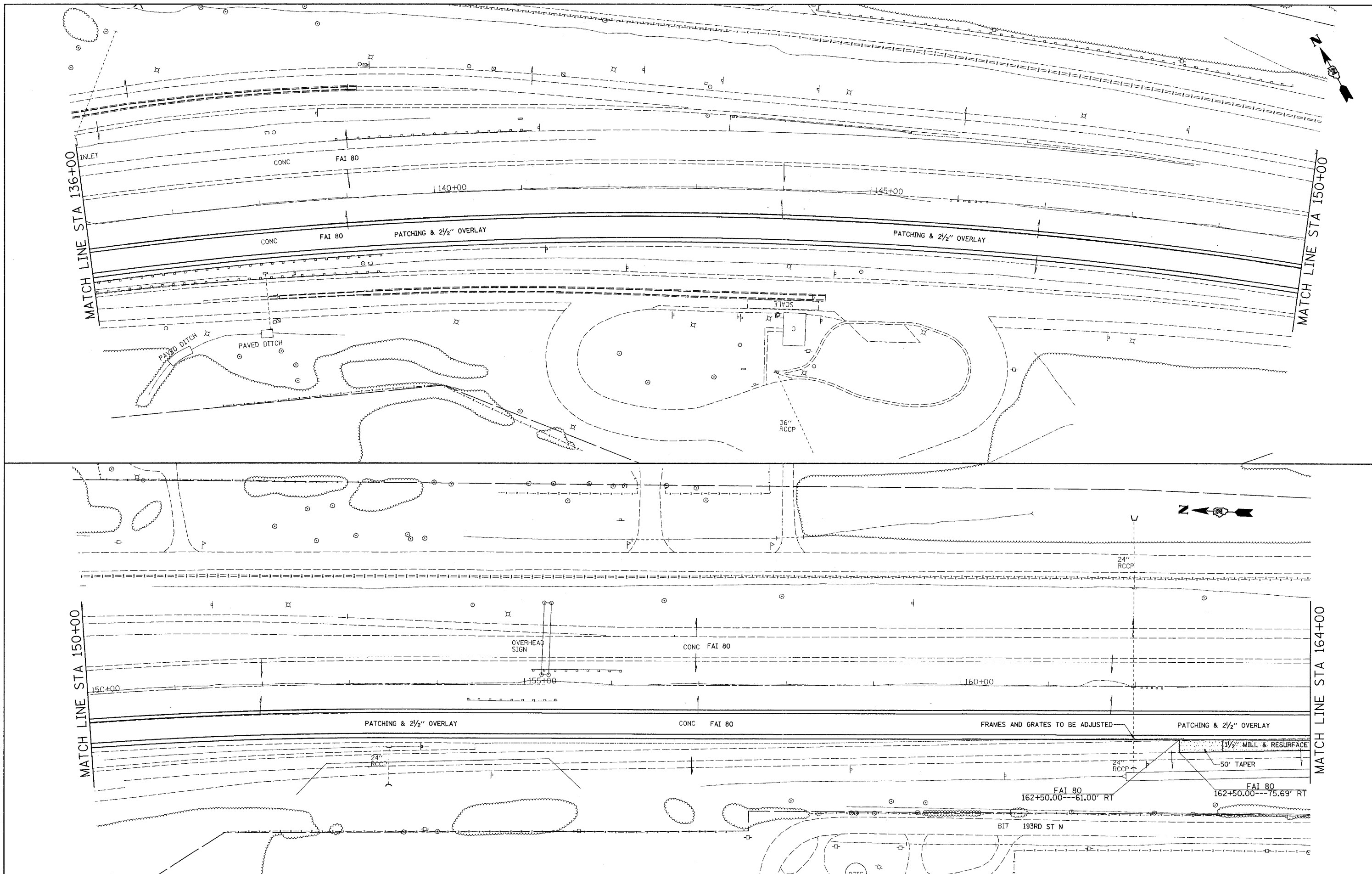
F.A.I. RTE. 80	SECTION *	COUNTY ROCK ISLAND	TOTAL SHEETS 31	SHEET NO. 23
CONTRACT NO. 64D34				
FED. ROAD DIST. NO. ILLINOIS FED. AID PROJECT				



EXIST. CURVE 210
 P.I. STA. = 130+30.99
 $\Delta = 60^\circ 16' 19''$ (RT)
 $D = 1^\circ 09' 59''$
 $R = 4,912.16'$
 $T = 2,851.60'$
 $L = 5,167.31'$
 $E = 767.71'$
 $e = 0.010$ FT/FT
 T.R. = -----
 S.E. RUN = -----
 P.C. STA. = 101+79.39
 P.T. STA. = 153+46.70

Remove Normal Crown and attain superelevation in 100 ft from Sta. 101+24.89 to 102+24.89
 Remove Normal Crown and attain superelevation in 120 ft from Sta. 152+88.10 to 154+08.10

FILE NAME = PX-80 resurfpln.dgn	USER NAME = grantpm	DESIGNED -	REVISED -	STATE OF ILLINOIS DEPARTMENT OF TRANSPORTATION	I-80	F.A.T. RTE. = 80	SECTION = *	COUNTY = ROCK ISLAND	TOTAL SHEETS = 31	SHEET NO. = 24	
	PLOT SCALE = 50,0000' / IN.	DRAWN -	REVISED -			SCALE:	SHEET NO. OF SHEETS	STA. TO STA.	FED. ROAD DIST. NO. =	ILLINOIS FED. AID PROJECT	CONTRACT NO. 64D34
	PLOT DATE = Thu May 15 11:01:17 2008	CHECKED -	REVISED -								
		DATE -	REVISED -								



FILE NAME =
 P:\I-80 resurf\plan.dgn

USER NAME = grantpm
 PLOT SCALE = 50.0000' / IN.
 PLOT DATE = Thu May 15 11:01:17 2008

DESIGNED -
 DRAWN -
 CHECKED -
 DATE -

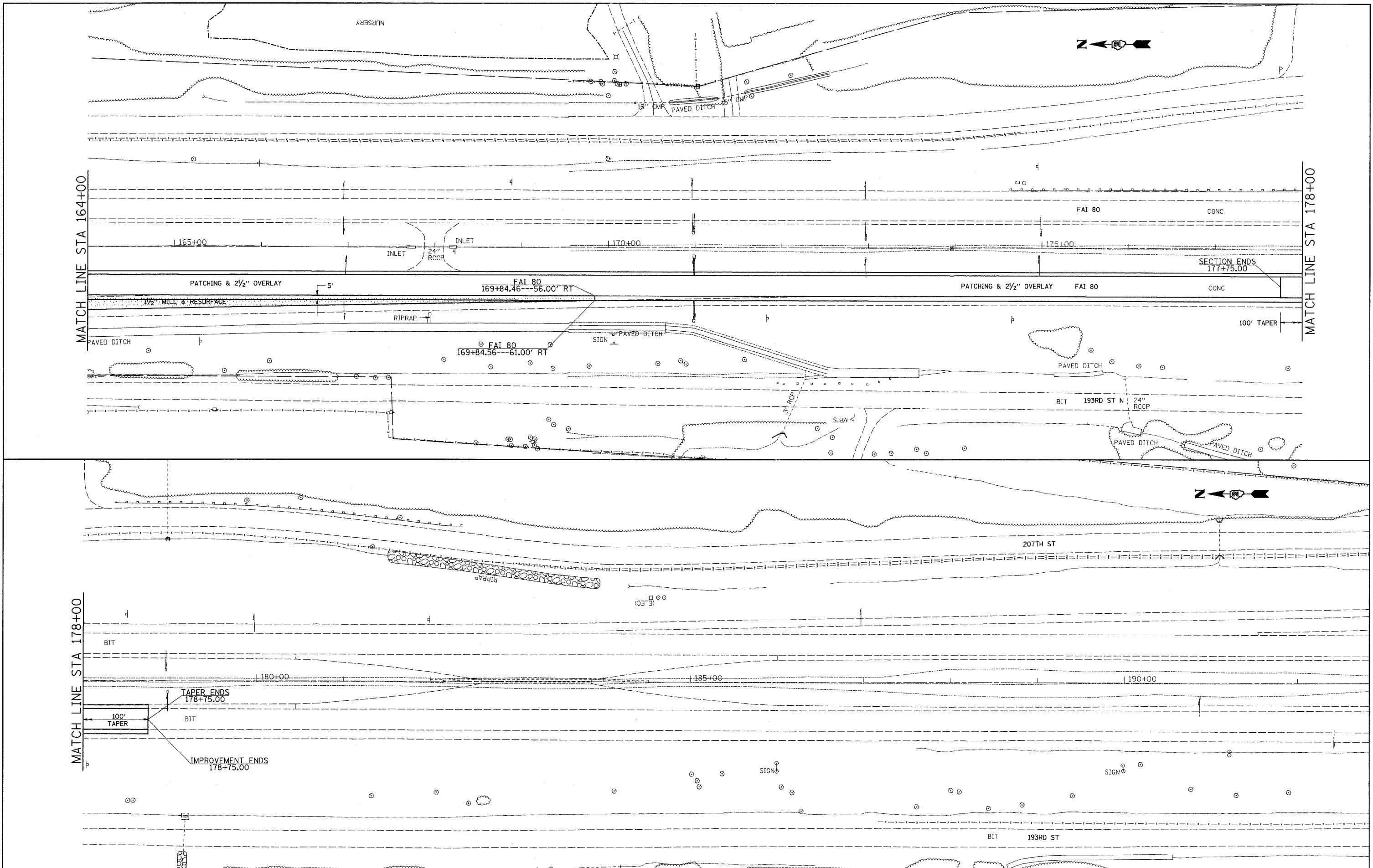
REVISED -
 REVISED -
 REVISED -
 REVISED -

**STATE OF ILLINOIS
 DEPARTMENT OF TRANSPORTATION**

I-80

SCALE: SHEET NO. OF SHEETS STA. TO STA.

F.A.I. RTE. 80	SECTION *	COUNTY ROCK ISLAND	TOTAL SHEETS 31	SHEET NO. 25
CONTRACT NO. 64D34				
FED. ROAD DIST. NO. ILLINOIS FED. AID PROJECT				



FILE NAME =
P:\1-80 resurfpln.dgn

USER NAME = grantpm
 DESIGNED -
 DRAWN -
 CHECKED -
 PLOT DATE = Thu May 15 11:01:18 2008

DESIGNED -
 DRAWN -
 CHECKED -
 DATE -

REVISED -
 REVISED -
 REVISED -
 REVISED -

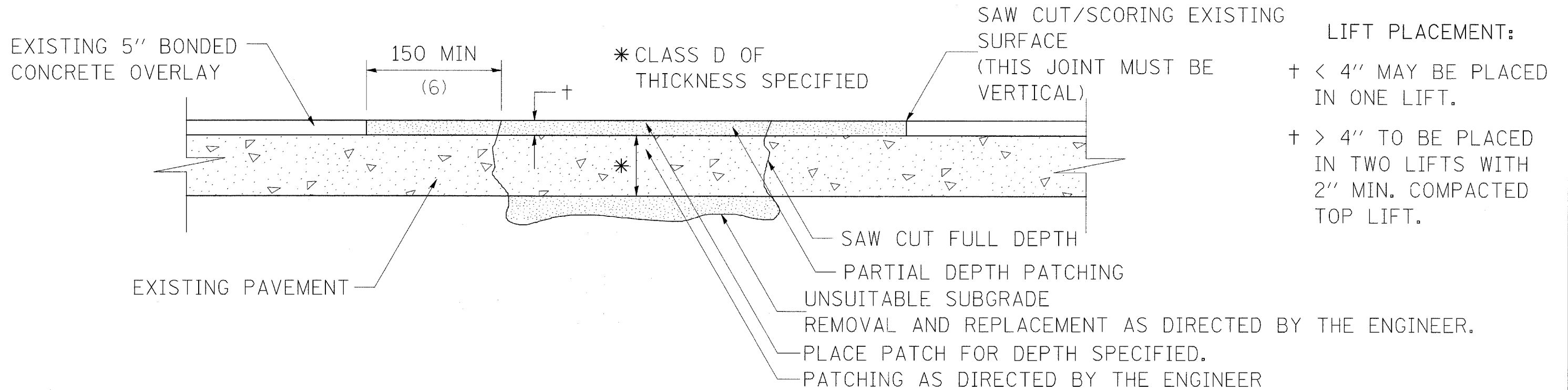
**STATE OF ILLINOIS
DEPARTMENT OF TRANSPORTATION**

I-80

SCALE: SHEET NO. OF SHEETS STA. TO STA.

F.A.I. RTE. 80	SECTION *	COUNTY ROCK ISLAND	TOTAL SHEETS 31	SHEET NO. 26
FED. ROAD DIST. NO.		ILLINOIS FED. AID PROJECT		
CONTRACT NO. 64D34				

PARTIAL DEPTH PATCHING



SEQUENCE OF CONSTRUCTION:

1. REMOVE THE EXISTING 5" CONCRETE SURFACE.
2. RESIDENT ENGINEER WILL DETERMINE FULL DEPTH PATCHING IS REQUIRED.
3. REMOVE AND REPLACE FULL DEPTH PATCHES AT LOCATIONS DIRECTED BY THE ENGINEER.
4. PLACE PARTIAL DEPTH PATCH OVER FULL DEPTH PATCHES, AND AT LOCATIONS OF CONCRETE SURFACE REMOVAL

GENERAL NOTES:

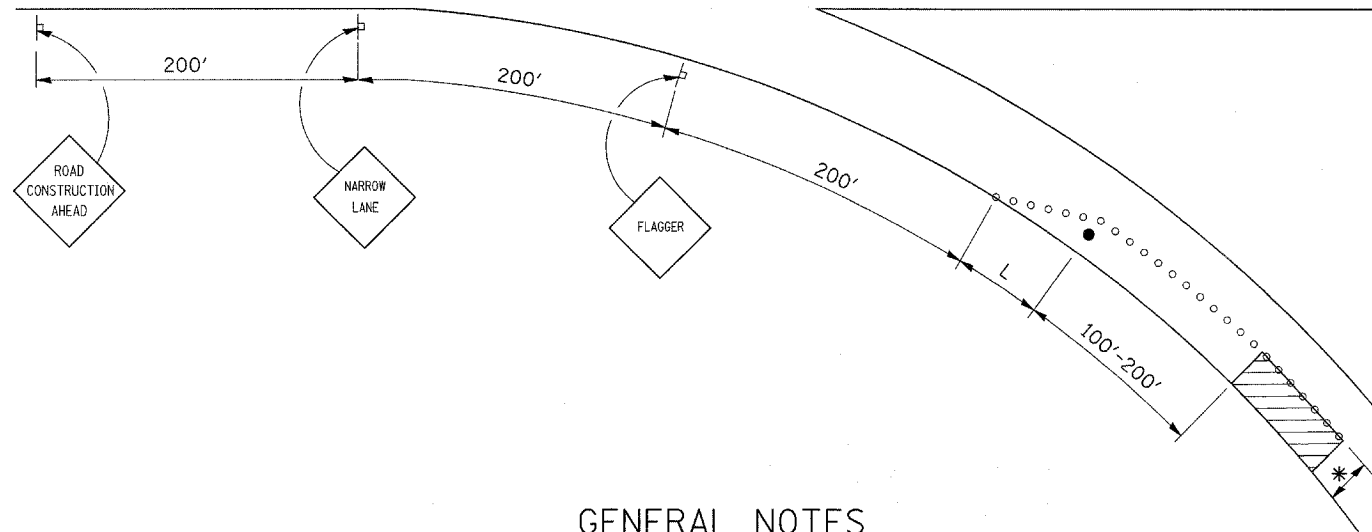
1. ALL DIMENSIONS ARE IN MILLIMETERS (INCHES) UNLESS OTHERWISE NOTED.

REVISED - 11-01-07

* D2 SPRING PATCHING 2007-2

FILE NAME = P:\1-00 resur-favr.dgn	USER NAME = grantpm	DESIGNED -	REVISED -	STATE OF ILLINOIS DEPARTMENT OF TRANSPORTATION	TYPICAL SECTIONS			F.A.I. RTE.	SECTION	COUNTY	TOTAL SHEETS	SHEET NO.
		DRAWN -	REVISED -					80	*	ROCK ISLAND	31	28
		CHECKED -	REVISED -		SCALE: SHEET NO. OF SHEETS STA. TO STA.			CONTRACT NO. 64034				
		DATE -	REVISED -		FED. ROAD DIST. NO. ILLINOIS FED. AID PROJECT							

TRAFFIC CONTROL AND PROTECTION FOR RAMPS



GENERAL NOTES

CONES AT 8 m (25') CENTERS FOR 105 m (350'). ADDITIONAL CONES MAY BE PLACED AT 15 m (50') CENTERS. WHEN DRUMS OR BARRICADES ARE USED, THE INTERVAL DEVICES MAY BE DOUBLED.

* WIDTH OF CLOSURE SHOWN ON RAMP PATCHING SCHEDULE OR AS DIRECTED BY ENGINEER.

L = CLOSURE WIDTH * TAPER RATIO IS SPEED LIMIT / 1 (POSTED OR ADVISORY)

ANY VISIBLE REPAIRS REQUIRED ON THE SHOULDER BECAUSE OF TRAFFIC SHALL BE PROVIDED AT THE CONTRACTORS EXPENSE. THE ENGINEER SHALL BE THE SOLE JUDGE FOR ANY SHOULDER REPAIRS.

THE RAMP SHALL BE COMPLETELY OPEN TO TRAFFIC BY NIGHTFALL.

TRAFFIC CONTROL AND PROTECTION FOR RAMPS SHALL BE INCLUDED IN THE COST OF STANDARD 701406 OR 701401

SYMBOLS



WORK AREA



SIGN



BARRICADE OR DRUM



CONE, DRUM OR BARRICADE



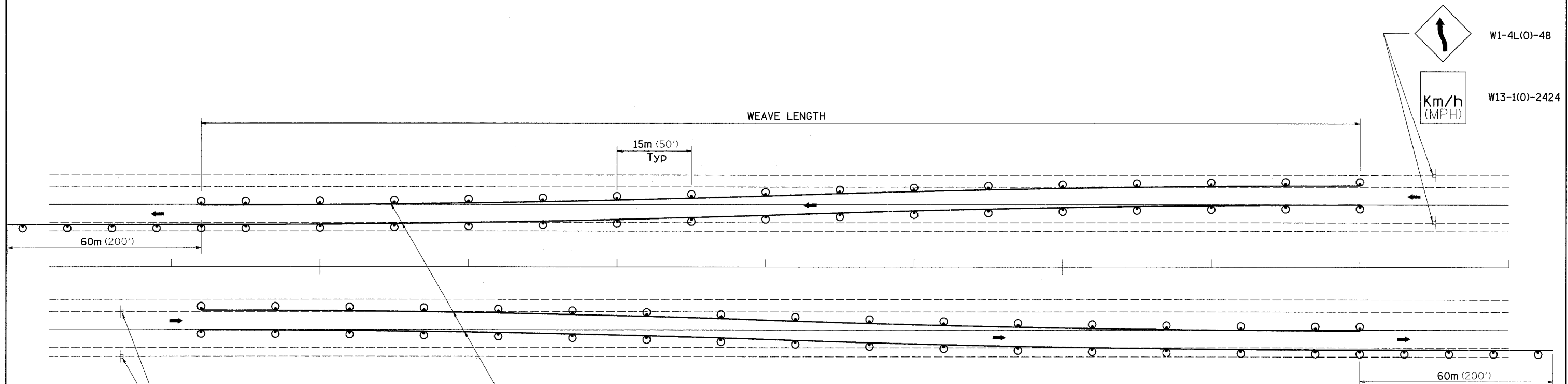
FLAGGER WITH TRAFFIC CONTROL SIGN

ALL DIMENSIONS ARE IN MILLIMETERS (INCHES) UNLESS OTHERWISE NOTED.

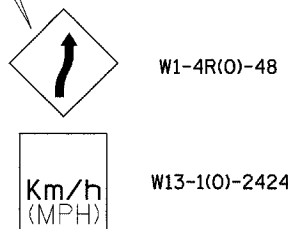
REVISED - 10-15-04

REVISED -	REGION 2 / DISTRICT 2 STANDARD	F.A.I. RTE.	SECTION	COUNTY	TOTAL SHEETS	SHEET NO.	
REVISED -		80	*	ROCK ISLAND	31	29	
REVISED -		SCALE: 50.000' / IN.		SHEET NO. OF SHEETS		STA. TO STA.	FED. ROAD DIST. NO. [ILLINOIS] FED. AID PROJECT
REVISED -							CONTRACT NO. 64034
REVISED -							

TRAFFIC CONTROL TYPICAL WEAVE



Temporary Pavement Marking required if Typical Weave is used for 14 days or more.



LEGEND

- ⊙ DRUM WITH STEADY BURN MONO-DIRECTIONAL LIGHTS
- ⊢ SIGN ON PERMANENT MOUNT

DESIGNER NOTE:

1. USE ON LONG 4-LANE PROJECTS WHERE THE CONTRACTOR MAY CHANGE A PORTION OF THE WORK TO THE OPPOSITE LANE.
2. USE WHERE THE PROJECT IS ADJACENT TO ANOTHER AND THE CONTRACTOR COULD BE WORKING ON DIFFERENT LANES.
3. TEMPORARY PAVEMENT MARKING SHALL BE USED WHEN TYPICAL WEAVE IS USED FOR 14 DAYS OR MORE.
4. TRAFFIC CONTROL TYPICAL WEAVE SHALL BE INCLUDED IN THE COST OF THE SPECIFIC TRAFFIC CONTROL STANDARDS OF ITEMS.

STANDARD WEAVE CONDITIONS FOR DIFFERENT SPEED LIMITS

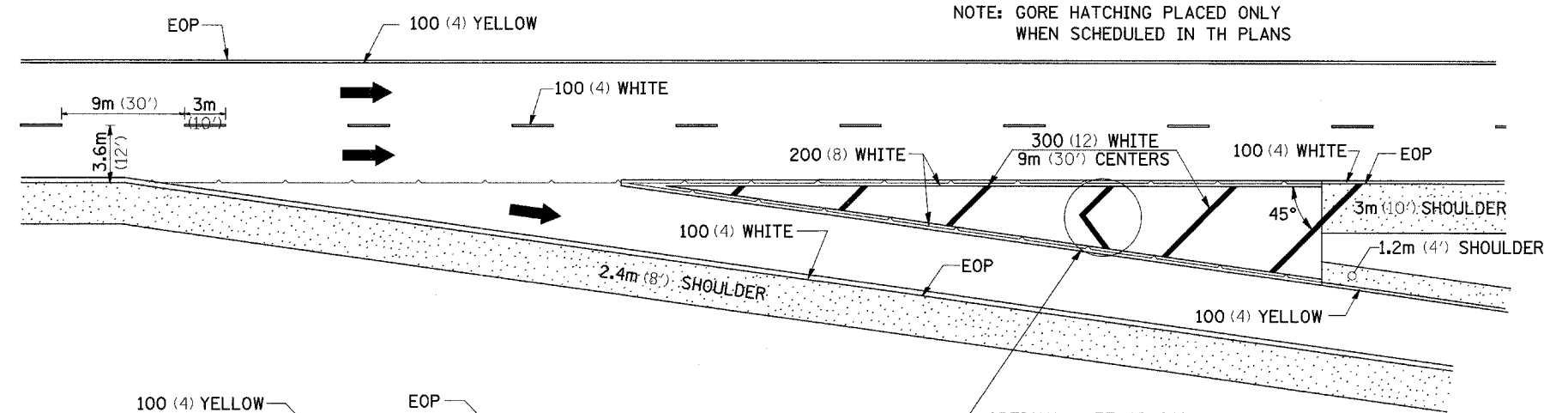
POSTED SPEED LIMIT	ADVISORY SPEED LIMIT	WEAVE LENGTH
110 Km/h (65 MPH)	80 Km/h (45 MPH)	240m (780 FT.)
90 Km/h (55 MPH)	60 Km/h (35 MPH)	200m (660 FT.)
80 Km/h (45 MPH)	40 Km/h (25 MPH)	165m (540 FT.)

ALL DIMENSIONS ARE IN MILLIMETERS (INCHES) UNLESS OTHERWISE NOTED.

FILE NAME = P:\1-80 resurfcrv.dgn	USER NAME = granisp	DESIGNED -	REVISED - 5-30-91	STATE OF ILLINOIS DEPARTMENT OF TRANSPORTATION	REGION 2 / DISTRICT 2 STANDARD			F.A.I. RTE. 80	SECTION *	COUNTY ROCK ISLAND	TOTAL SHEETS 31	SHEET NO. 30
	PLOT SCALE = 50,000' / IN.	DRAWN -	REVISED -		SCALE:	SHEET NO. OF SHEETS	STA. TO STA.	CONTRACT NO. 64D34				
	PLOT DATE = Thu May 15 11:03:25 2008	CHECKED -	REVISED -		• D2 SPRING PATCHING 2007-2							
		DATE -	REVISED -		ILLINOIS FED. AID PROJECT							

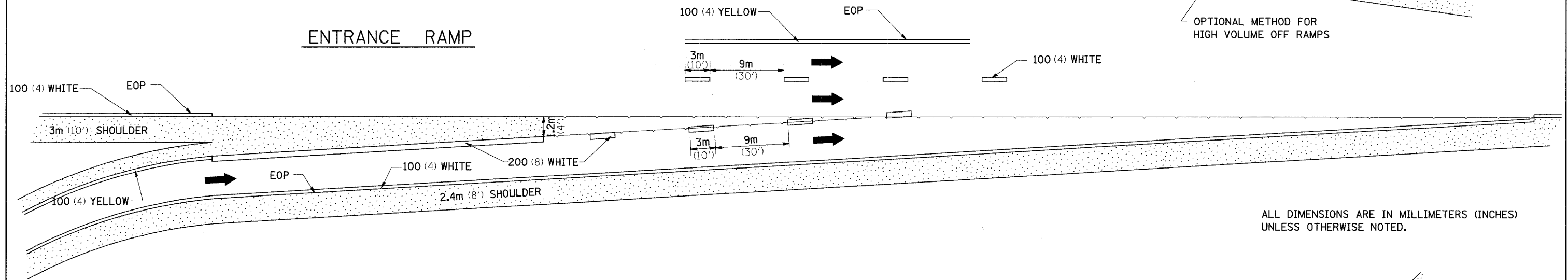
PAINTING DETAILS

EXIT RAMP



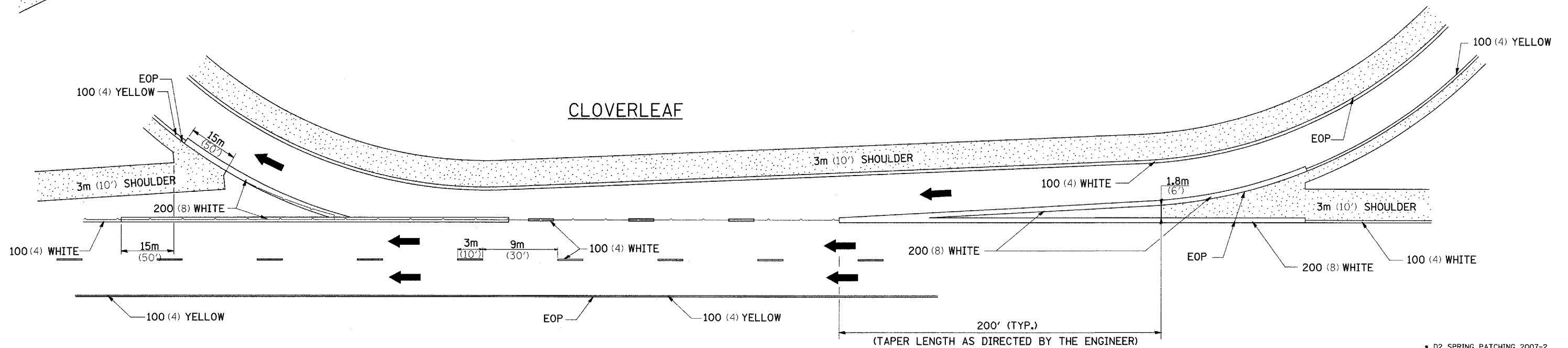
NOTE: GORE HATCHING PLACED ONLY WHEN SCHEDULED IN TH PLANS

ENTRANCE RAMP



ALL DIMENSIONS ARE IN MILLIMETERS (INCHES) UNLESS OTHERWISE NOTED.

CLOVERLEAF



FILE NAME = P:\1-80 resurf\cvr.dgn	USER NAME = grantpm	DESIGNED -	REVISED - 6-26-90	STATE OF ILLINOIS DEPARTMENT OF TRANSPORTATION	REGION 2 / DISTRICT 2 STANDARD	F.A.I. RTE. 80	SECTION *	COUNTY ROCK ISLAND	TOTAL SHEETS 31	SHEET NO. 31	
PLOT SCALE = 50.000' / IN.		CHECKED -	REVISED -	SCALE: SHEET NO. OF SHEETS STA. TO STA.		FED. ROAD DIST. NO. ILLINOIS FED. AID PROJECT		CONTRACT NO. 64D34			
PLOT DATE = Thu May 15 11:03:25 2008		DATE -	REVISED -	PAINTING DETAILS							44.1

• D2 SPRING PATCHING 2007-2