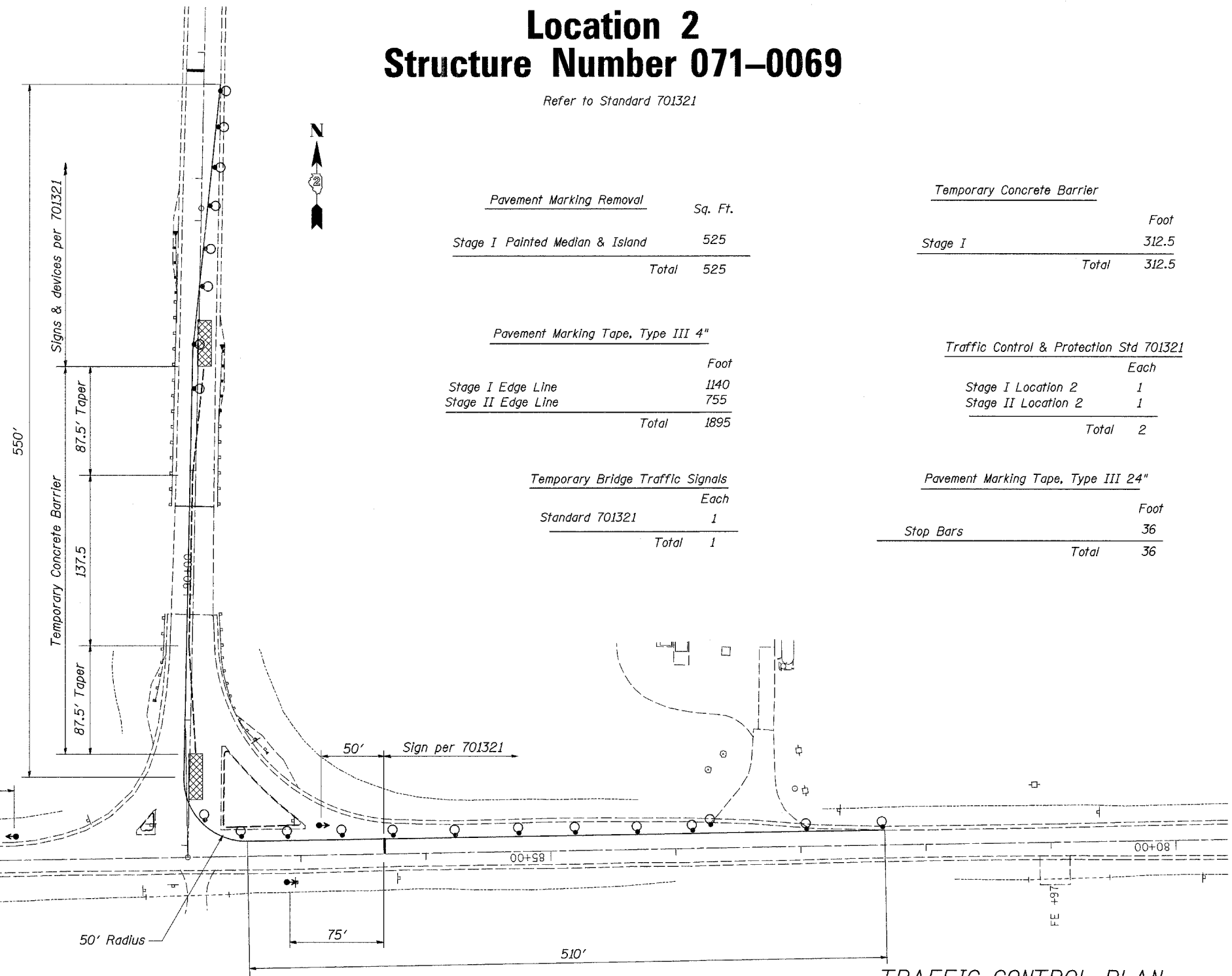
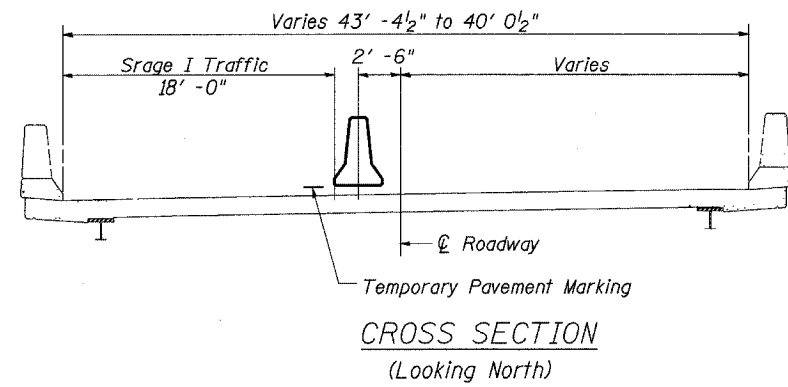


Traffic Control Plan Location 2 Structure Number 071-0069

Refer to Standard 701321



Pavement Marking Removal	Sq. Ft.
Stage I Painted Median & Island	525
Total	525

Temporary Concrete Barrier	Foot
Stage I	312.5
Total	312.5

Pavement Marking Tape, Type III 4"	Foot
Stage I Edge Line	1140
Stage II Edge Line	755
Total	1895

Traffic Control & Protection Std 701321	Each
Stage I Location 2	1
Stage II Location 2	1
Total	2

Temporary Bridge Traffic Signals	Each
Standard 701321	1
Total	1

Pavement Marking Tape, Type III 24"	Foot
Stop Bars	36
Total	36

Stage I

**TRAFFIC CONTROL PLAN
IL 26 OVER BUFFALO CREEK
VARIOUS ROUTES
SECTION (106BR)M, (4B-2)M & (177-4B-3)M
VARIOUS COUNTIES
STRUCTURE NUMBER 071-0069**

* Various
** (106BR)M, (4B-2)M & 177-4B-3)M

FILE NAME =	USER NAME = linkdj	DESIGNED -	REVISED -	STATE OF ILLINOIS DEPARTMENT OF TRANSPORTATION	Traffic Control Plan			F.A. RTE.	SECTION	COUNTY	TOTAL SHEETS	SHEET NO.
D:\BR\CADD plans\Various Counties\Contract #64D99 2008 expansion joints\008028.dgn	DRAWN -	REVISED -	SCALE:					SHEET NO.	OF SHEETS	STA.	TO STA.	ILLINOIS
PLOT SCALE = 50.0000' / IN.	CHECKED -	REVISED -	FED. ROAD DIST. NO. ILLINOIS FED. AID PROJECT									
PLOT DATE = Sat Mar 15 11:13:20 2008	DATE -	REVISED -										