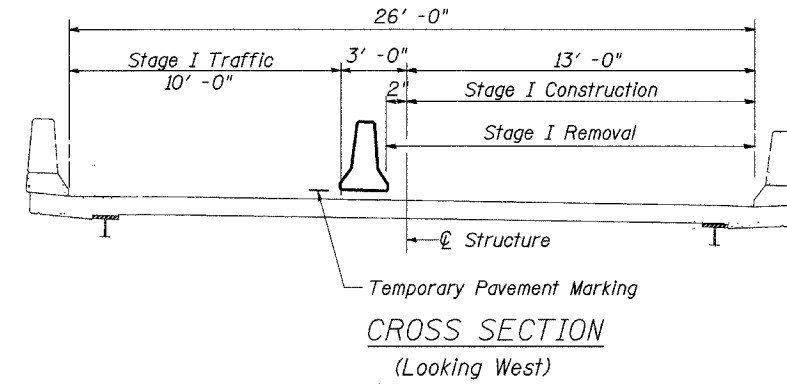
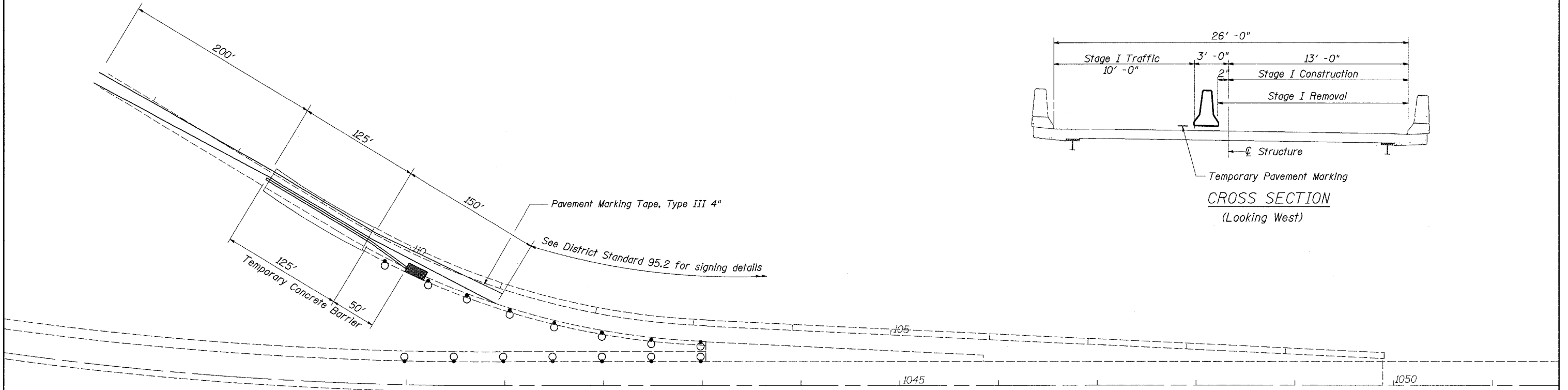


Traffic Control Plan

Location 3

Structure Number 089-0060



<u>Pavement Marking Removal</u>	Sq. Ft.	<u>Temporary Concrete Barrier</u>	Foot
Edge Lines	400	Stage I	175
Total	400	Total	175

<u>Pavement Marking Tape, Type III 4\"/></u>	Foot
Stage I Edge Line	950
Stage II Edge Line	2600
Total	3550

TRAFFIC CONTROL PLAN
US ROUTE 20 WESTBOUND RAMP OVER SILVER CREEK
VARIOUS ROUTES
SECTION (106BR)M, (4B-2)M & (177-4B-3)M
VARIOUS COUNTIES
STRUCTURE NUMBER 089-0060

* Various
 ** (106BR)M, (4B-2)M & 177-4B-3)M

FILE NAME =	USER NAME = linkdj	DESIGNED -	REVISED -	STATE OF ILLINOIS DEPARTMENT OF TRANSPORTATION	Traffic Control Plan			F.A. RTE.	SECTION	COUNTY	TOTAL SHEETS	SHEET NO.	
0:\BR\CADD plans\Various Counties\Contract #64D99 2008 expansion joints\000028.dgn	Contract #64D99 2008 expansion joints\000028.dgn	DRAWN -	REVISED -		SCALE:	SHEET NO.	OF SHEETS	STA.	TO STA.	ILLINOIS	CONTRACT NO. 64D99	26	7
PLOT SCALE = 50,000 / IN.		CHECKED -	REVISED -		FED. ROAD DIST. NO.	ILLINOIS FED. AID PROJECT							
PLOT DATE = Sat Mar 15 11:31:19 2008		DATE -	REVISED -										