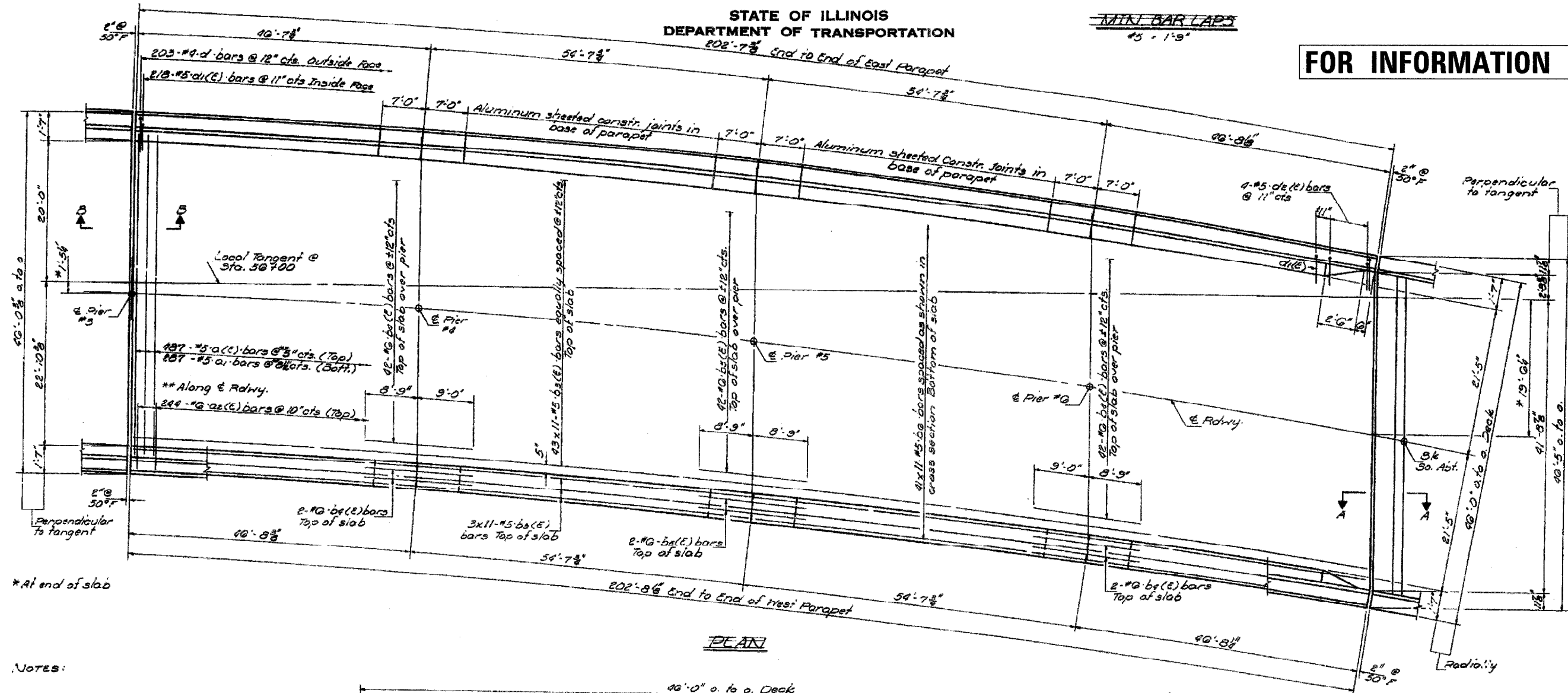


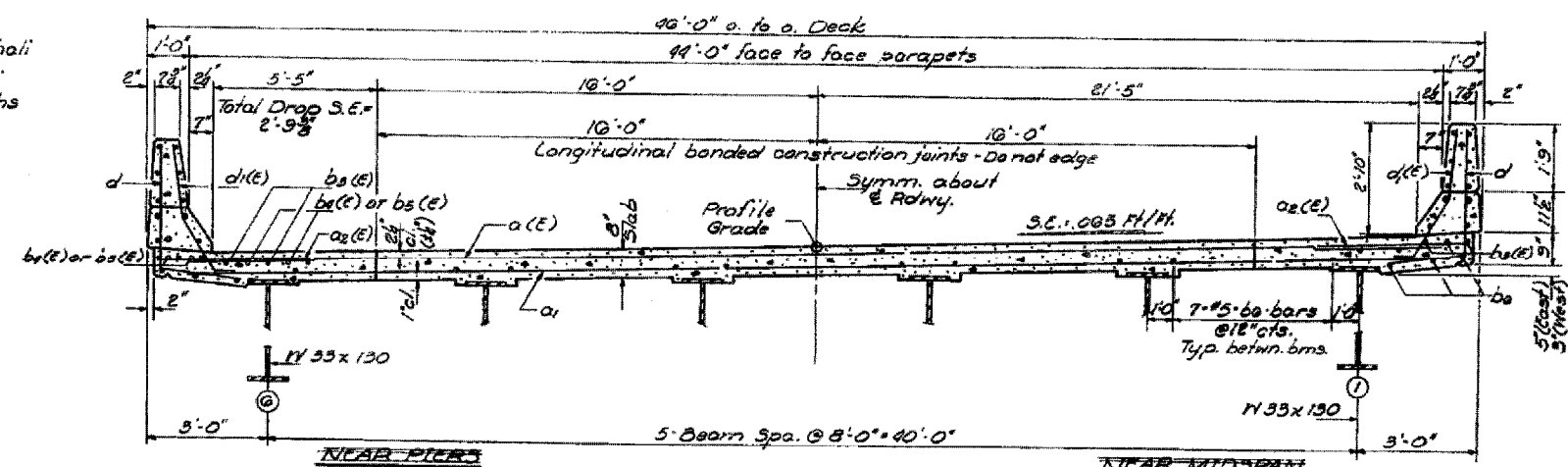
FOR INFORMATION ONLY



PLAN

NOTES:

Reinforcement bars designated (E) shall be epoxy coated. See Special Provisions. Bars indicated thus 20x3-#5 etc. indicates 20 lines of bars with 3 lengths per line.



CROSS SECTION
(Looking North)

DECK PLAN & CROSS SECTION
SPANS 4-7
IL 84 OVER PLUM RIVER
FA ROUTE 18 (IL 84)
SECTION 106BR
CARROLL COUNTY
STRUCTURE NUMBER 008-0028

* Various
** (106BR)M, (4B-2)M & 177-4B-3)M

FILE NAME =	USER NAME = linkdj	DESIGNED -	REVISED -	STATE OF ILLINOIS DEPARTMENT OF TRANSPORTATION	Existing Deck Plan & Cross-Section (Spans 4-7)			F.A. RTE.	SECTION	COUNTY	TOTAL SHEETS	SHEET NO.		
D:\BR\CADD plans\Various Counties\Contract #64099 2008 expansion joints\0080028.dgn		DRAWN -	REVISED -					SCALE: None	SHEET NO. 3 OF 7 SHEETS	STA. TO STA.	ILLINOIS	Various	26	12
PLOT SCALE = 50.0000' / IN.		CHECKED -	REVISED -								CONTRACT NO. 64099			
PLOT DATE = Sat Mar 15 11:12:59 2008		DATE -	REVISED -								ILLINOIS FED. AID PROJECT			