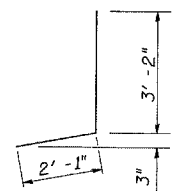
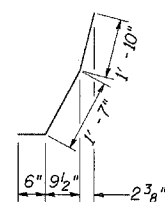


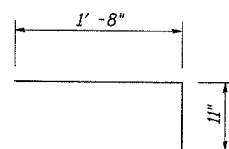
**EXISTING PARTIAL PLAN**  
(At West Abutment)



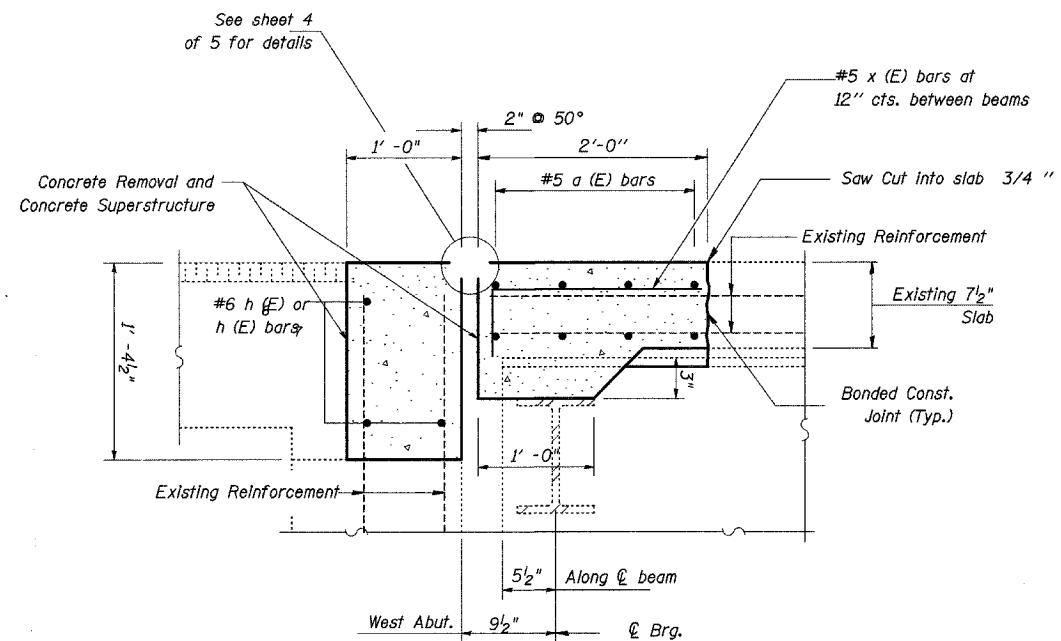
**#4 d (E) BAR**



**#5 d<sub>1</sub> (E) BAR**



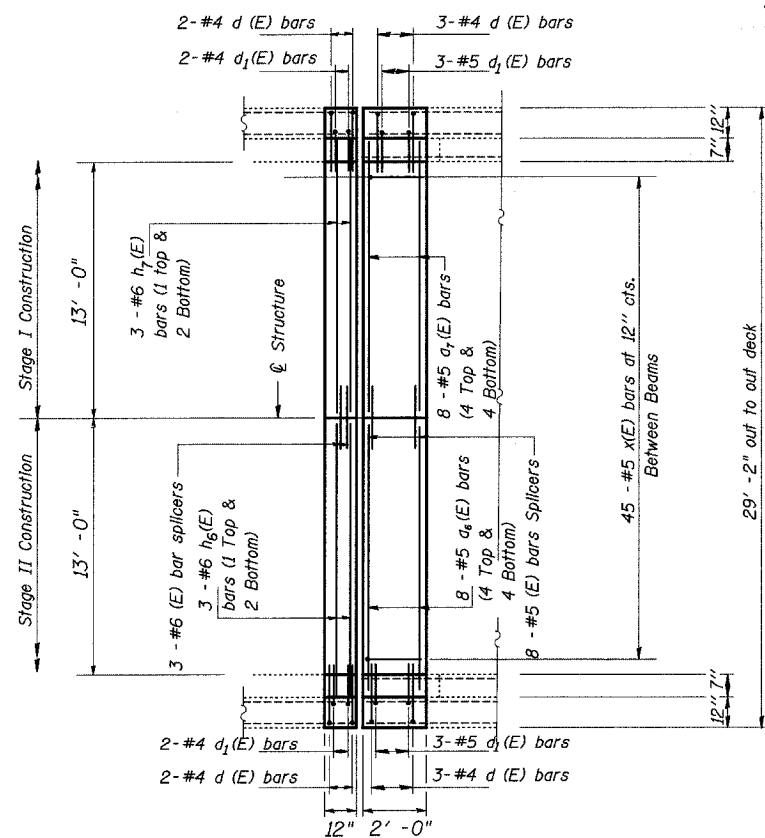
**#5 x (E) BAR**



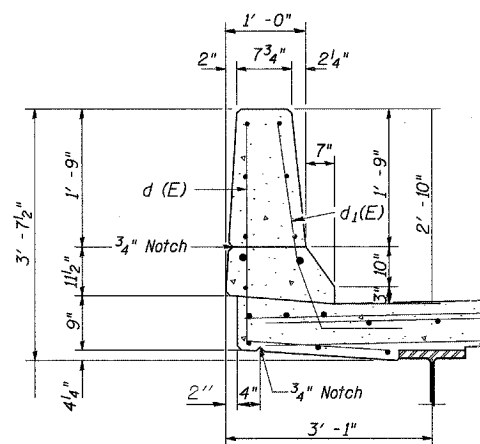
**SECTION THRU JOINT**  
(At West Abutment)

**Bill of Material**

| BAR                              | NO. | SIZE | LENGTH   | SHAPE |
|----------------------------------|-----|------|----------|-------|
| a <sub>6</sub> (E)               | 8   | 5    | 15' - 2" | —     |
| a <sub>1</sub> (E)               | 8   | 5    | 14' - 0" | —     |
| d (E)                            | 10  | 4    | 5' - 3"  | J     |
| d <sub>1</sub> (E)               | 10  | 5    | 3' - 11" | J     |
| h <sub>6</sub> (E)               | 3   | 6    | 13' - 5" | —     |
| h <sub>1</sub> (E)               | 3   | 6    | 15' - 4" | —     |
| x (E)                            | 45  | 5    | 2' - 7"  | —     |
| CONCRETE SUPERSTRUCTURE          |     |      | CU YD    | 4.0   |
| CONCRETE REMOVAL                 |     |      | CU YD    | 4.0   |
| REINFORCEMENT BARS, EPOXY COATED |     |      | POUND    | 570   |
| PREFORMED JOINT STRIP SEAL       |     |      | FOOT     | 30    |
| BAR SPLICERS                     |     |      | EACH     | 11    |
| REM REIN T B TERM T1             |     |      | EACH     | 2     |



**PROPOSED PARTIAL PLAN**  
(At West Abutment)



**TYPICAL SECTION THRU PARAPET**

**JOINT DETAILS**  
US 20 WB RAMP OVER SILVER CREEK  
FA 401 (US 20)  
SECTION 177-4B-3  
STEPHENSON COUNTY  
STRUCTURE NUMBER 089-0060

\* Various  
\*\* (106BR)M, (4B-2)M & 177-4B-3)M

|   |                            |            |           |   |                      |   |         |              |              |           |
|---|----------------------------|------------|-----------|---|----------------------|---|---------|--------------|--------------|-----------|
| FILE NAME =   | USER NAME = linkdj         | DESIGNED - | REVISED - | <b>STATE OF ILLINOIS<br/>DEPARTMENT OF TRANSPORTATION</b> | <b>Joint Details</b> | F.A. RTE.                                     | SECTION | COUNTY       | TOTAL SHEETS | SHEET NO. |
| D:\BR\CADD plans\Various Counties\Contract #64099 2008 expansion joints\0000028.dgn | PLOT SCALE = 50.0000 / IN. | DRAWN -    | REVISED - |   |                      | *   | **      | Various      | 26           | 24        |
| PLOT DATE = Sat Mar 15 11:31:19 2008  | DATE -                     | CHECKED -  | REVISED - |   |                      | ILLINOIS CONTRACT NO. 64D99                   |         |              |              |           |
|   |                            | DATE -     | REVISED - |   |                      | FED. ROAD DIST. NO. ILLINOIS FED. AID PROJECT |         |              |              |           |
| SCALE: None   |                            |            |           |   |                      | SHEET NO. 3 OF 5 SHEETS                       |         | STA. TO STA. |              |           |