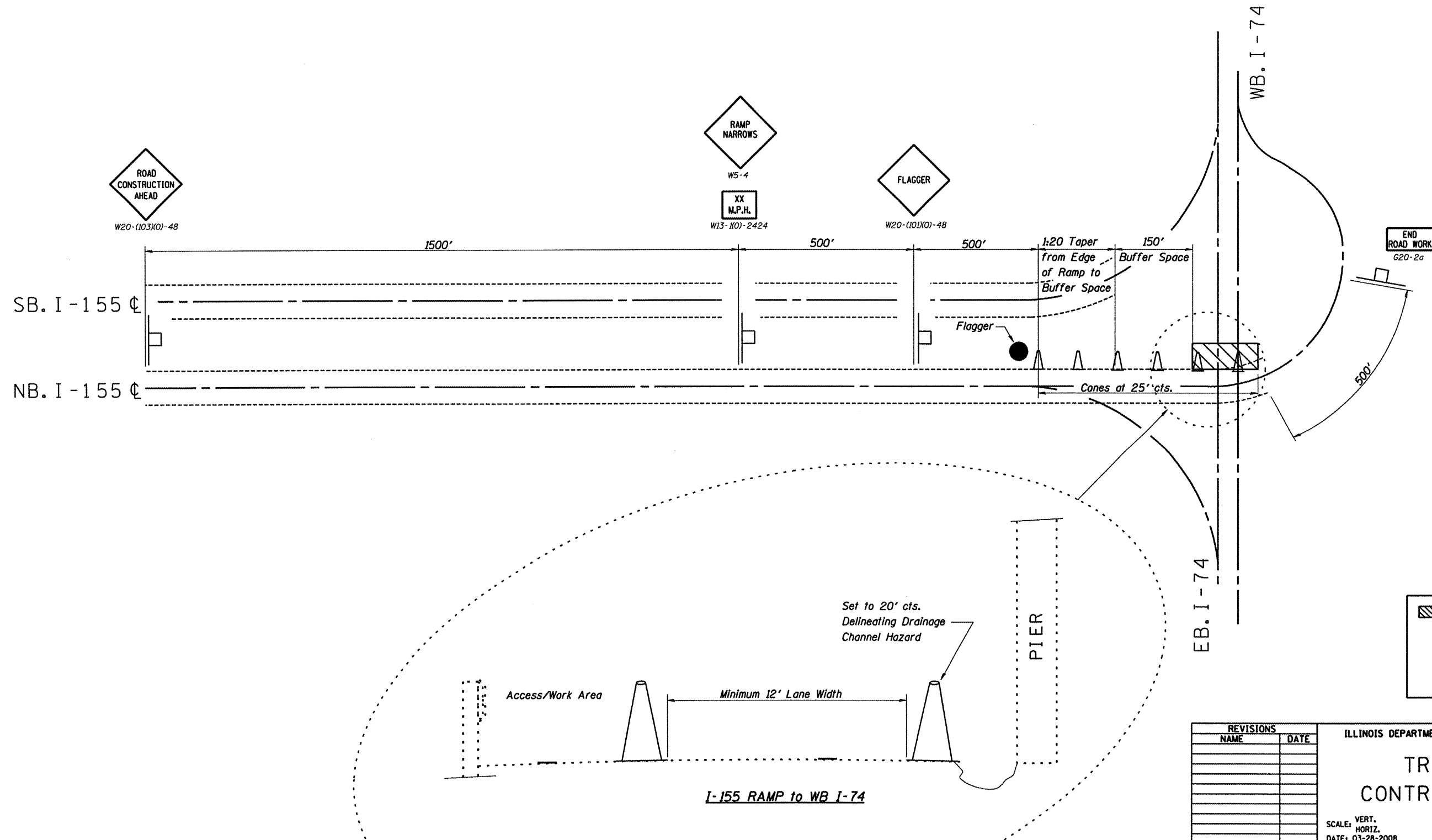


F.A. RTE.	SECTION	COUNTY	TOTAL SHEETS	SHEET NO.
VAR.	VARIOUS	VARIOUS	9	7
STA.		TO STA.		
FED. ROAD DIST. NO. 4 ILLINOIS FED. AID PROJECT				

**TYPICAL PARTIAL RAMP
CLOSURE-DAYTIME ONLY**

General Notes:

1. The advisory speed sign shall be 10 mph lower than the posted speed limit.
2. All cones shall be a minimum height of 28".
3. No parking or material storage shall be allowed in the taper or buffer space.
4. Existing posted speed limit signs shall be completely covered during working hours.



REVISIONS	
NAME	DATE

ILLINOIS DEPARTMENT OF TRANSPORTATION
TRAFFIC CONTROL PLAN
 SCALE: VERT. _____
 HORIZ. _____
 DATE: 03-28-2008
 DRAWN BY: CEJ
 CHECKED BY: _____

PLOT DATE: _____
 DATE: _____
 FILE NAME: _____
 USER: _____