

F.A.S. RTE.	SECTION	COUNTY	TOTAL SHEETS	SHEET NO.
2793	(O,P,Y)RS-1	FAYETTE	52	1
FED. ROAD DIST. NO.	ILLINOIS	CONTRACT NO. 74057		

**STATE OF ILLINOIS
DEPARTMENT OF TRANSPORTATION
DIVISION OF HIGHWAYS**

**PROPOSED
HIGHWAY PLANS**

**FAS ROUTE 2793
SECTION (O,P,Y)RS-1**

**FAYETTE COUNTY
C-97-075-04**

FOR INDEX OF SHEETS, SEE SHEET NO. 2

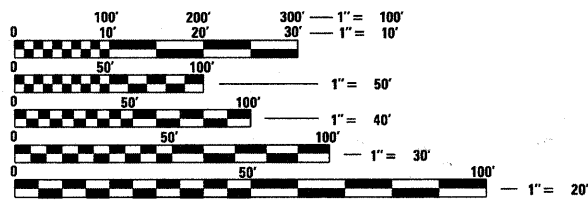
STATION EQUATIONS:

- STA. 487+98.21 (BK) = STA. 488+04.32 (AH)
- STA. 520+66.39 (BK) = STA. 521+03.00 (AH)
- STA. 562+95.12 (BK) = STA. 563+31.58 (AH)
- STA. 601+48.50 (BK) = STA. 309+00.00 (AH)
- STA. 227+61.34 (BK) = STA. 227+89.00 (AH)
- STA. 194+07.74 (BK) = STA. 196+50.00 (AH)
- STA. 142+29.04 (BK) = STA. 143+09.00 (AH)
- STA. 131+84.64 (BK) = STA. 131+66.00 (AH)
- STA. 114+06.76 (BK) = STA. 114+50.00 (AH)
- STA. 63+00.00 (BK) = STA. 64+60.00 (AH)
- STA. 40+63.02 (BK) = STA. 40+73.00 (AH)
- STA. 100+00.00 (BK) = STA. 0+00.00 (AH)

BRIDGE OMISSIONS:

- STA. 472+79.00 TO STA. 473+43.00
- STA. 502+08.00 TO STA. 505+56.00
- STA. 144+78.00 TO STA. 144+57.00

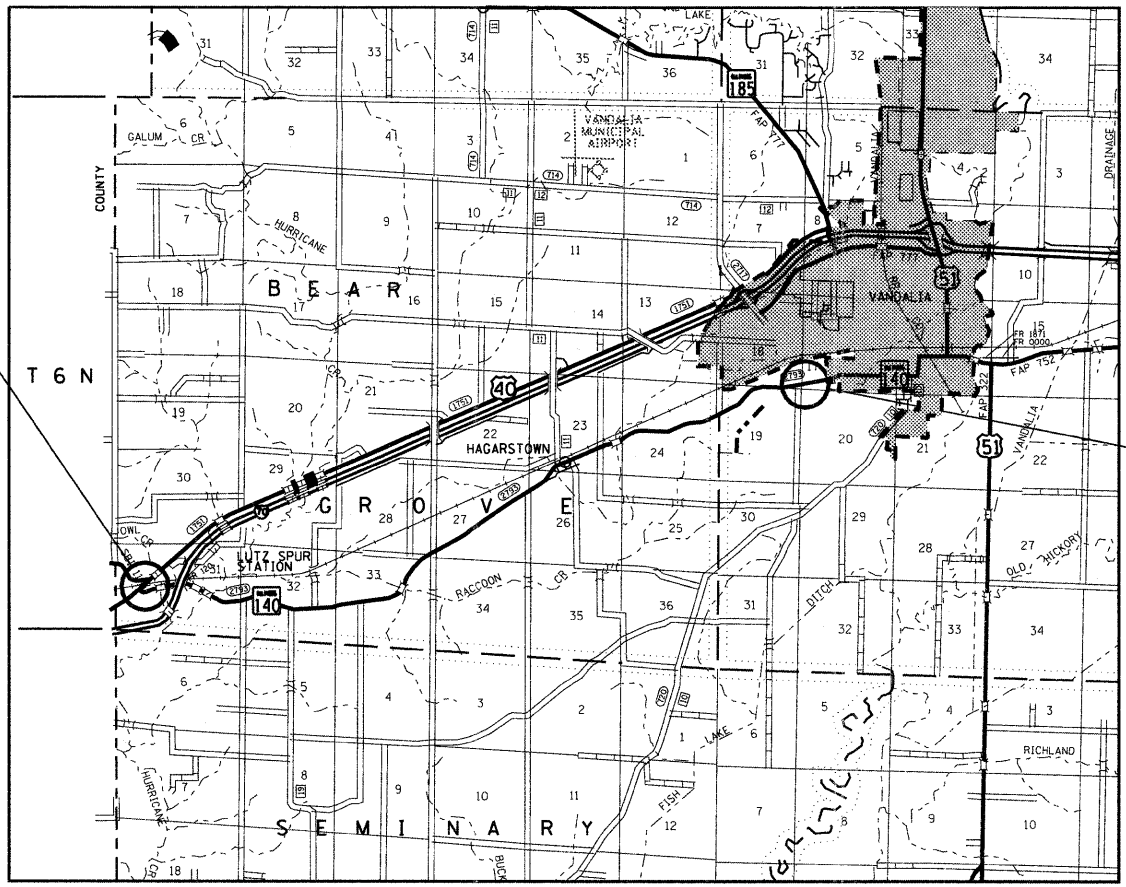
**FAS ROUTE 2793
SECTION (O,P,Y)RS-1
FAYETTE COUNTY
PROJECT BEGINS:
STA. 456 + 57.00**



FULL SIZE PLANS HAVE BEEN PREPARED USING STANDARD ENGINEERING SCALES. REDUCED SIZED PLANS WILL NOT CONFORM TO STANDARD SCALES. IN MAKING MEASUREMENTS ON REDUCED PLANS, THE ABOVE SCALES MAY BE USED.

J.U.L.I.E.
JOINT UTILITY LOCATION INFORMATION FOR EXCAVATION
1-800-892-0123
OR 811

TOWNSHIP: BEAR GROVE, VANDALIA
PROJECT ENGINEER: TOM RONAN
PROJECT MANAGER: JENNIFER WENTHE



**FAS ROUTE 2793
SECTION (O,P,Y)RS-1
FAYETTE COUNTY
PROJECT ENDS:
STA. 93 + 50.00**

GROSS LENGTH = 45,417.86 FT. = 8.60 MILES
NET LENGTH = 44,984.86 FT. = 8.52 MILES



STATE OF ILLINOIS
DEPARTMENT OF TRANSPORTATION
DIVISION OF HIGHWAYS

SUBMITTED May 13 2008

Christine M. Reed
DEPUTY DIRECTOR OF HIGHWAYS, REGION ENGINEER

June 27, 20 08
Eric E. Horn
ENGINEER OF DESIGN AND ENVIRONMENT

June 27, 20 08
Christine M. Reed
DIRECTOR OF HIGHWAYS, CHIEF ENGINEER

**PRINTED BY THE AUTHORITY
OF THE STATE OF ILLINOIS**