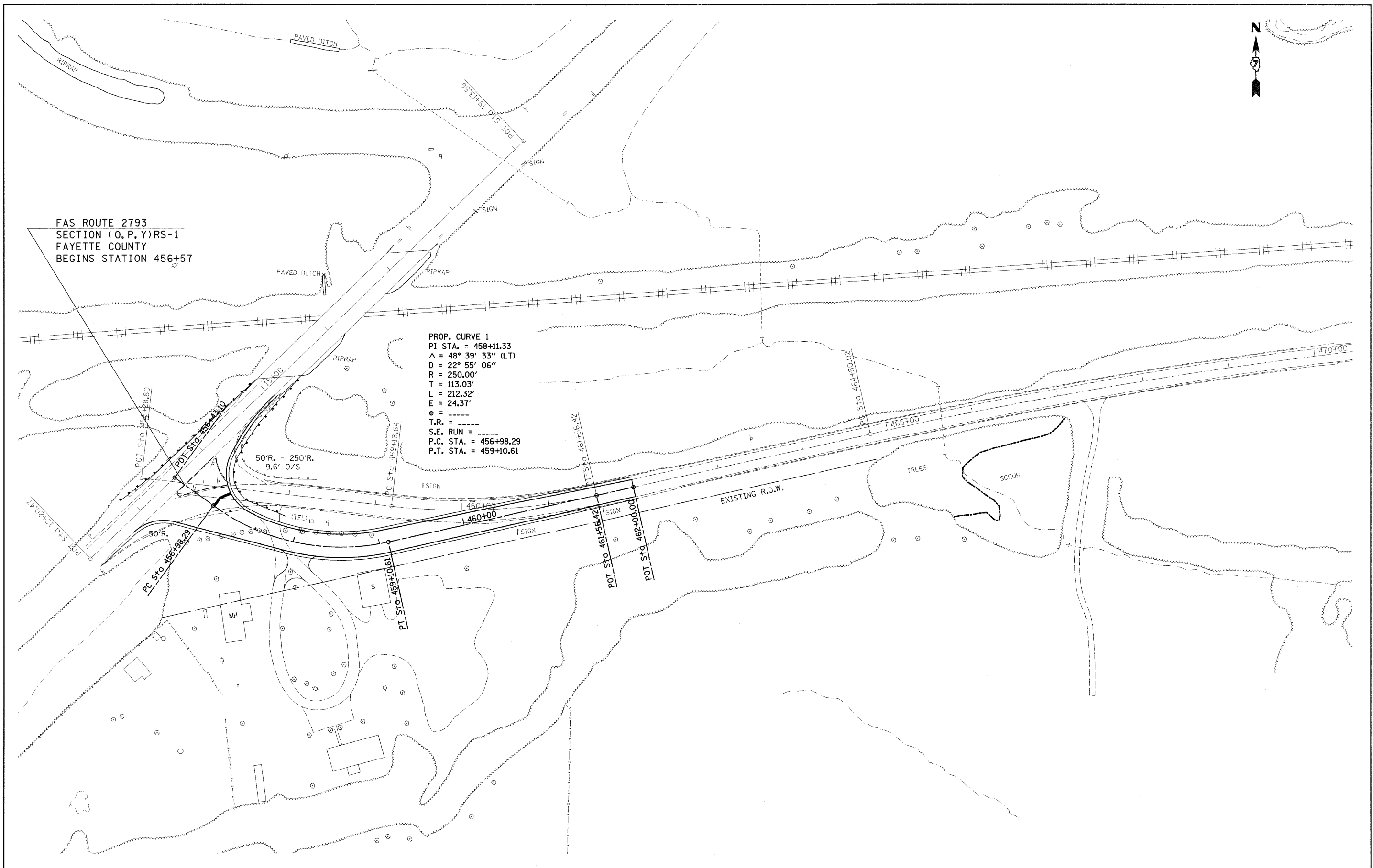




FAS ROUTE 2793  
SECTION (O, P, Y)RS-1  
FAYETTE COUNTY  
BEGINS STATION 456+57

PROP. CURVE 1  
PI STA. = 458+11.33  
 $\Delta = 48^\circ 39' 33''$  (LT)  
D = 22° 55' 06"  
R = 250.00'  
T = 113.03'  
L = 212.32'  
E = 24.37'  
e = ----  
T.R. = ----  
S.E. RUN = ----  
P.C. STA. = 456+98.29  
P.T. STA. = 459+10.61



FILE NAME =	USER NAME = swartzw	DESIGNED -	REVISED -
c:\projects\74057d\shiplan_74057.dgn		DRAWN -	REVISED -
	PLOT SCALE = 50.0000' / IN.	CHECKED -	REVISED -
	PLOT DATE = 5/14/2008	DATE -	REVISED -

**STATE OF ILLINOIS  
DEPARTMENT OF TRANSPORTATION**

<b>PLAN SHEET</b>			
SCALE: 50	SHEET NO. 1 OF 16 SHEETS	STA. 456+57	TO STA. 470+00

F.A.S. RTE.	SECTION	COUNTY	TOTAL SHEETS	SHEET NO.
2793	(O,P,Y)RS-1	FAYETTE	52	21
FED. ROAD DIST. NO.			ILLINOIS FED. AID PROJECT	
			CONTRACT NO. 74057	