

STAGE 3 SUGGESTED SEQUENCE OF OPERATIONS

1. MAINTAIN ACCESS TO ENTRANCE AT ALL TIMES.
2. BUILD UP EXISTING PAVEMENT WITH LEVEL BINDER TO MATCH NEW PROFILE AND CROSS SLOPES FROM STATION 459+63 TO STATION 462+00, USING TRAFFIC CONTROL AND PROTECTION STANDARD 701306.
3. SWITCH TRAFFIC OVER TO THE NEW ALIGNMENT.

NOTES:

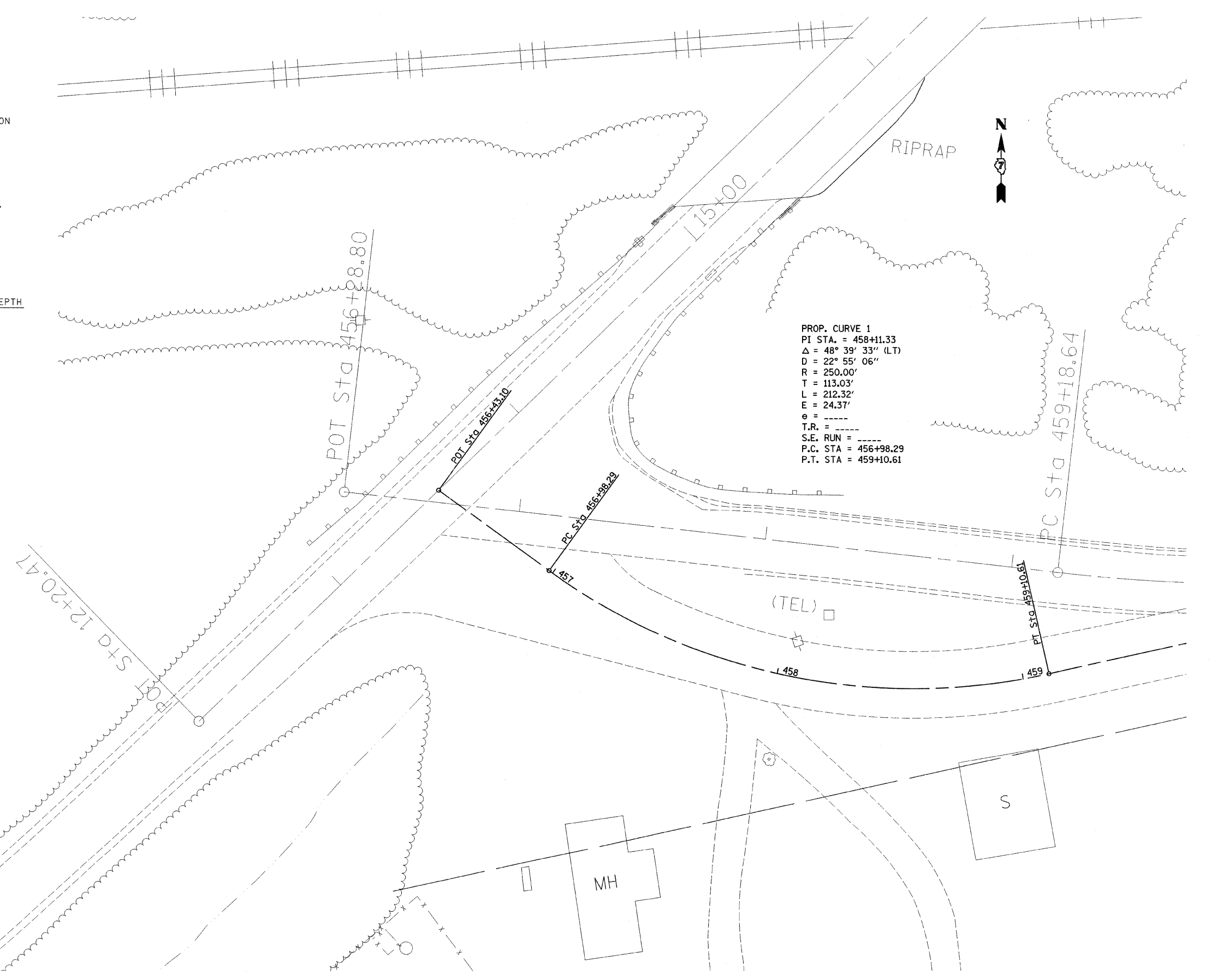
1. THIS TRAFFIC CONTROL WILL BE PAID FOR AT THE CONTRACT UNIT PRICE LUMP SUM FOR TRAFFIC CONTROL AND PROTECTION, (SPECIAL). THIS PRICE SHALL INCLUDE ANY TRAFFIC CONTROL STANDARDS AND ALL TRAFFIC CONTROL WORK REQUIRED FOR STAGES 1, 2, 3, AND 4.

HOT-MIX ASPHALT SURFACE REMOVAL, VARIABLE DEPTH

461+50	TO	462+00	61.7	SQ YD
TOTAL =			61.7	SQ YD

HOT-MIX ASPHALT BINDER COURSE, IL 19 N70

459+63	TO	462+00	148.0	TON
TOTAL =			148.0	TON



PROP. CURVE 1
 PI STA. = 458+11.33
 $\Delta = 48^\circ 39' 33''$ (LT)
 $D = 22^\circ 55' 06''$
 $R = 250.00'$
 $T = 113.03'$
 $L = 212.32'$
 $E = 24.37'$
 $e = \text{---}$
 $T.R. = \text{---}$
 $S.E. \text{ RUN} = \text{---}$
 $P.C. \text{ STA} = 456+98.29$
 $P.T. \text{ STA} = 459+10.61$

FILE NAME = c:\projects\74057d\shstage3_74057.dgn	USER NAME = swartzru	DESIGNED -	REVISED -
		DRAWN -	REVISED -
	PLOT SCALE = 20.0000 1/ IN.	CHECKED -	REVISED -
	PLOT DATE = 5/14/2008	DATE -	REVISED -

**STATE OF ILLINOIS
 DEPARTMENT OF TRANSPORTATION**

STAGE III CONSTRUCTION

SCALE: 20 SHEET NO. 1 OF 2 SHEETS STA. 456+43.10 TO STA. 459+50

F.A.S. RTE. 2793	SECTION (O,P,YRS-1)	COUNTY FAYETTE	TOTAL SHEETS 52	SHEET NO. 41
CONTRACT NO. 74057				
FED. ROAD DIST. NO. ILLINOIS FED. AID PROJECT				