

INDEX OF SHEETS

- 1 COVER SHEET
- 2 INDEX OF SHEETS AND GENERAL NOTES
- 3 SUMMARY OF QUANTITIES
- 4-6 DETAILED LOCATION MAPS

GENERAL NOTES

ALL AREAS DISTURBED FOR ANY REASON SHALL BE SEEDED WITH CLASS 2 SEEDING AS DIRECTED BY THE ENGINEER.

MULCH SHALL CONFORM TO SECTION 251 OF THE STANDARD SPECIFICATIONS. MULCH SHALL CONFORM TO METHOD 2, PROCEDURE 2 AS SPECIFIED IN ARTICLE 251.03.

ILLINOIS STATE LAW REQUIRES A 48-HOUR NOTICE BE GIVEN TO ALL UTILITIES BEFORE DIGGING. FIELD MARKING OF FACILITIES MAY BE OBTAINED BY CONTACTING J.U.L.I.E. OR, FOR NON-MEMBERS, BY CONTACTING THE UTILITY COMPANY DIRECTLY. THE FOLLOWING AGENCIES ARE KNOWN TO HAVE FACILITIES WITHIN THE PROJECT AREA.

- AMEREN IP
- AT&T DISTRIBUTION
- AT&T TRANSMISSION
- CENTERPOINT ENERGY PIPELINE SERVICES
- CHARTER COMMUNICATIONS
- CONSOLIDATED TELEPHONE
- ILLINOIS AMERICAN WATER CO.
- LEVEL 3 COMMUNICATIONS
- MCI
- NETWORKS, 360
- QWEST
- SPRINT

CITY OF VENICE - (618) 877-1400
 METRO EAST SANITARY DISTRICT - (618) 452-9400

MEMBERS OF J.U.L.I.E. (800)-892-0123 ARE INDICATED BY *.
 NON-J.U.L.I.E. MEMBERS MUST BE NOTIFIED INDIVIDUALLY.

ALL BASEMENTS OR VOIDS SHALL BE FILLED WITH SUITABLE MATERIAL AS SPECIFIED IN THE STANDARD SPECIFICATION, ARTICLE 1003.01 AS STATED IN THE SPECIAL PROVISIONS.

ALL PUBLIC OR CITY OWNED SIDEWALKS SHALL REMAIN.
 ANY DAMAGE SHALL BE THE RESPONSIBILITY OF THE CONTRACTOR.

STANDARDS

- 701006-02
- 701801-03
- 701901

BUILDING REMOVAL KEY

| BUILDING NO. | PARCEL NO. | DESCRIPTION |
|--------------|------------|--|
| 1. | 8015005 | 1080 SQ.FT. ONE-STORY WOOD FRAME BUILDING WITH FULL BASEMENT |
| 2. | 8015005 | 960 SQ.FT. TWO-STORY CONCRETE BLOCK BUILDING |
| 3. | 8015005 | 400 SQ.FT. GARAGE |
| 4. | 8015041 | 780 SQ.FT. ONE-STORY WOOD FRAME BUILDING WITH CRAWL SPACE |
| 5. | 8015037 | 780 SQ.FT. ONE-STORY WOOD FRAME BUILDING WITH CRAWL SPACE |

Rev. Sheet 7-14-08

| | | | | | | | | | | |
|--------------------------------|-----------------------|----------------------|--------------------|---|--|--------------------|--------------|---------------------|---------------------------|-----------|
| FILE NAME : Final Plans.dgn | USER NAME : indob@trw | DESIGNED - A. PENICK | REVISED - 07-11-08 | STATE OF ILLINOIS DEPARTMENT OF TRANSPORTATION | INDEX OF SHEETS AND GENERAL NOTES | F.A. RTE. | SECTION | COUNTY | TOTAL SHEETS | SHEET NO. |
| | | DRAWN - A. PENICK | REVISED - | | | 788 | 520-2-2DM6-1 | MADISON | 6 | 2 |
| | | CHECKED - T. WELZ | REVISED - | | | CONTRACT NO. 76869 | | | | |
| | | DATE - 05-14-08 | REVISED - | SCALE: | SHEET NO. 1 OF 1 SHEETS | STA. | TO STA. | FED. ROAD DIST. NO. | ILLINOIS FED. AID PROJECT | |

SUMMARY OF QUANTITIES

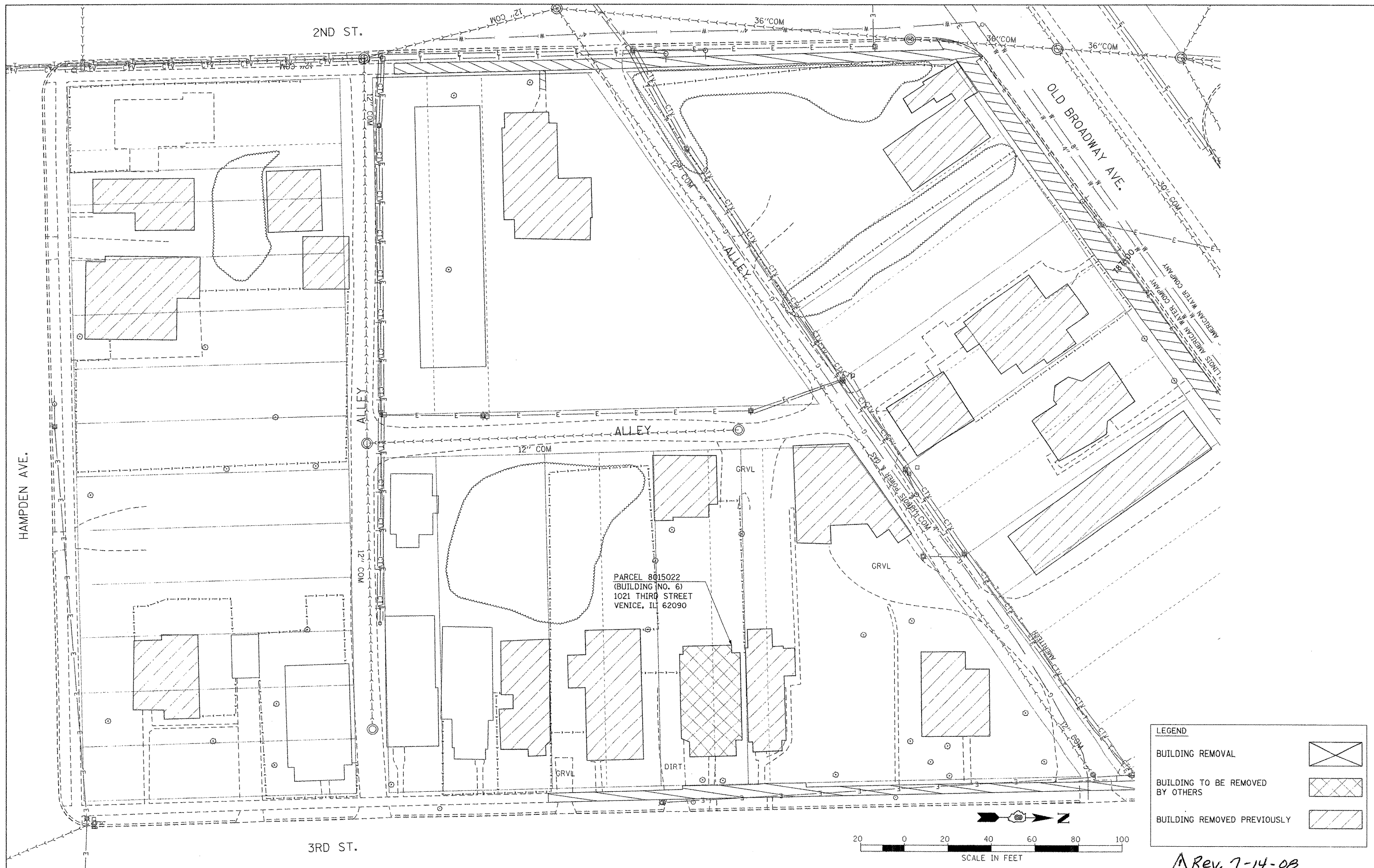
| SUMMARY OF QUANTITIES | | | | CONSTRUCTION TYPE CODE | |
|-----------------------|---|------------------|----------------|------------------------|--|
| CODE NO | ITEM | UNIT | TOTAL QUANTITY | 100% STATE URBAN | |
| | | | | Y004 | |
| 25000200 | SEEDING, CLASS 2 | ACRE | 1 | 1 | |
| 25100115 | MULCH, METHOD 2 | ACRE | 1 | 1 | |
| 67000400 | ENGINEER'S FIELD OFFICE, TYPE A | CAL MO | 2 | 2 | |
| 67100100 | MOBILIZATION | L SUM | 1 | 1 | |
| 70102640 | TRAFFIC CONTROL AND PROTECTION, STANDARD 701801 | L SUM | 1 | 1 | |
| Z0007601 | BUILDING REMOVAL NO. 1 | L SUM | 1 | 1 | |
| Z0007602 | BUILDING REMOVAL NO. 2 | L SUM | 1 | 1 | |
| Z0007603 | BUILDING REMOVAL NO. 3 | L SUM | 1 | 1 | |
| Z0007604 | BUILDING REMOVAL NO. 4 | L SUM | 1 | 1 | |
| Z0007605 | BUILDING REMOVAL NO. 5 | L SUM | 1 | 1 | |
| Z0007606 | BUILDING REMOVAL NO. 6 | L SUM | 1 | 1 | |
| * Z0049801 | REMOVAL AND DISPOSAL OF FRIABLE ASBESTOS, BUILDING NO. 1 | L SUM | 1 | 1 | |
| * Z0049806 | REMOVAL AND DISPOSAL OF FRIABLE ASBESTOS, BUILDING NO. 6 | L SUM | 1 | 1 | |
| * Z0049901 | REMOVAL AND DISPOSAL OF NON-FRIABLE ASBESTOS, BUILDING NO. 1 | L SUM | 1 | 1 | |
| * Z0049902 | REMOVAL AND DISPOSAL OF NON-FRIABLE ASBESTOS, BUILDING NO. 2 | L SUM | 1 | 1 | |
| * Z0049903 | REMOVAL AND DISPOSAL OF NON-FRIABLE ASBESTOS, BUILDING NO. 3 | L SUM | 1 | 1 | |
| * Z0049906 | REMOVAL AND DISPOSAL OF NON-FRIABLE ASBESTOS, BUILDING NO. 6 | L SUM | 1 | 1 | |
| X0324957 | BASEMENT WALL REMOVAL, SPECIAL | EACH | 1 | 1 | |



* Specialty Items

Rev. 7-14-08

| | | | | | | | | | | | |
|---------------------------------|----------------------|----------------------|-----------|---|------------------------------|---------------------|-------------------------|---------------------------|------------------|--------------------|--|
| FILE NAME = r30summaryL.new.dgn | USER NAME = jedbetaw | DESIGNED - A. PENICK | REVISED - | STATE OF ILLINOIS DEPARTMENT OF TRANSPORTATION | SUMMARY OF QUANTITIES | F.A. RTE. = 788 | SECTION = 520-2-2DM6-1 | COUNTY = MADISON | TOTAL SHEETS = 6 | SHEET NO. = 3 | |
| | | DRAWN - A. PENICK | REVISED - | | | SCALE: | SHEET NO. 1 OF 1 SHEETS | STA. | TO STA. | CONTRACT NO. 76869 | |
| | | CHECKED - T. WELZ | REVISED - | | | FED. ROAD DIST. NO. | | ILLINOIS FED. AID PROJECT | | | |
| | | DATE - 05-14-08 | REVISED - | | | | | | | | |



| | | | |
|----------------------|------------------------|----------------------|--------------------|
| FILE NAME | USER NAME = ledheta | DESIGNED - A. PENICK | REVISED - 07-11-08 |
| INDICATED BY NEW DGR | | DRAWN - A. PENICK | REVISED |
| | PLOT SCALE = \$SCALE\$ | CHECKED - T. WELZ | REVISED |
| | PLOT DATE = 07/16/2008 | DATE - 05-14-08 | REVISED |

**STATE OF ILLINOIS
DEPARTMENT OF TRANSPORTATION**

DETAILED LOCATION MAP

SCALE: SHEET NO. 3 OF 3 SHEETS STA. TO STA.

| | | | | | |
|---------------------|--|---------------------------|---------|--------------|-----------|
| F.A. RTE. | | SECTION | COUNTY | TOTAL SHEETS | SHEET NO. |
| 788 | | 520-2-2DM6-1 | MADISON | 6 | 6 |
| FED. ROAD DIST. NO. | | ILLINOIS FED. AID PROJECT | | | |
| | | CONTRACT NO. 76869 | | | |

FINAL PLANS

Rev. 7-14-08