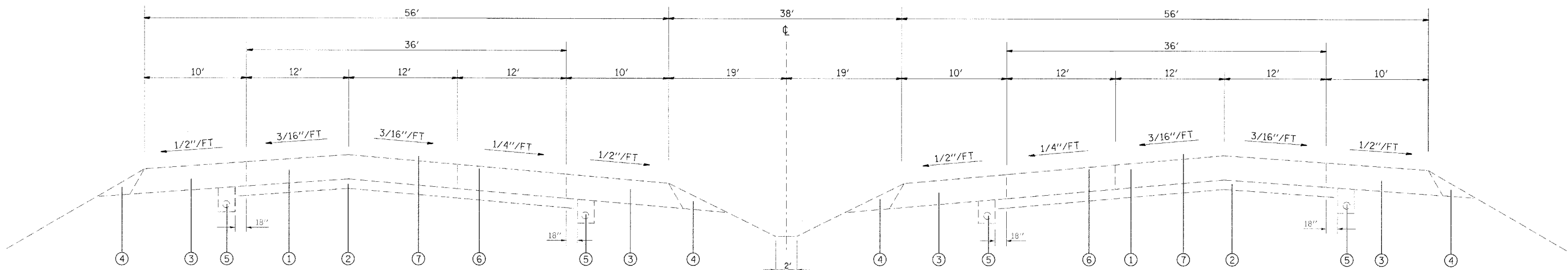


F.A.I. 255
 TYPICAL SECTION
 SB. & NB. STA. 1530+95.88 TO STA. 1534+40.00



F.A.I. 255
 TYPICAL SECTION
 NB. STA. 1534+40.00 TO STA. 1556+40.00
 SB. STA. 1534+40.00 TO STA. 1556+40.00

- ① EXISTING 10" C.R.P.C.C. PAVEMENT
- ② EXISTING 4" STABILIZED SUB-BASE
- ③ EXISTING HMA SHOULDERS 10"
- ④ EXISTING AGGREGATE SHOULDER, TYPE B
- ⑤ EXISTING PIPE UNDERDRAIN 4"
- ⑥ PROPOSED PCC SURFACE REMOVAL 1"
- ⑦ PROPOSED POLYMERIZED HMA SURFACE COURSE, 2"
- ⑧ PROPOSED HMA BINDER COURSE 2.25"
- ⑨ PROPOSED HMA BINDER COURSE 1"
- ⑩ PROPOSED AGGREGATE SHOULDER WEDGE, TYPE B
- ⑪ PROPOSED STRIP REFLECTIVE CRACK CONTROL
- ⑫ PROPOSED HMA SHOULDERS, 4.25"

FILE NAME =	USER NAME = bergmd	DESIGNED -	REVISED -	STATE OF ILLINOIS DEPARTMENT OF TRANSPORTATION	EXISTING TYPICAL SECTIONS		F.A.I. RTE.	SECTION	COUNTY	TOTAL SHEETS	SHEET NO.	
cd:\projects\vd976c22\design\ds76c22-sht	sjpica.dgn	DRAWN -	REVISED -		SCALE: _____	SHEET NO. _____ OF _____ SHEETS	STA. _____ TO STA. _____	255	(60-8,9)I..(60-9)BS	MADISON	20	7
		CHECKED -	REVISED -					CONTRACT NO. 76C22				
		DATE -	REVISED -					FED. ROAD DIST. NO. ILLINOIS FED. AID PROJECT				