

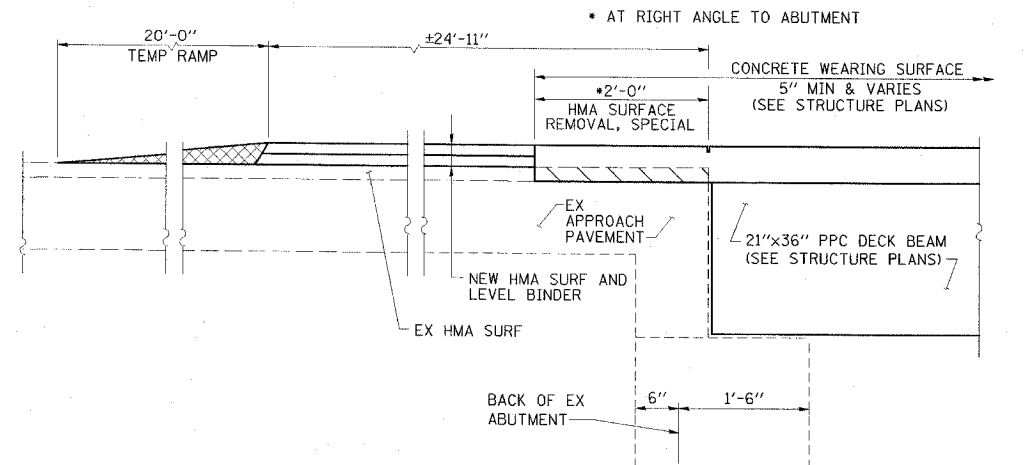
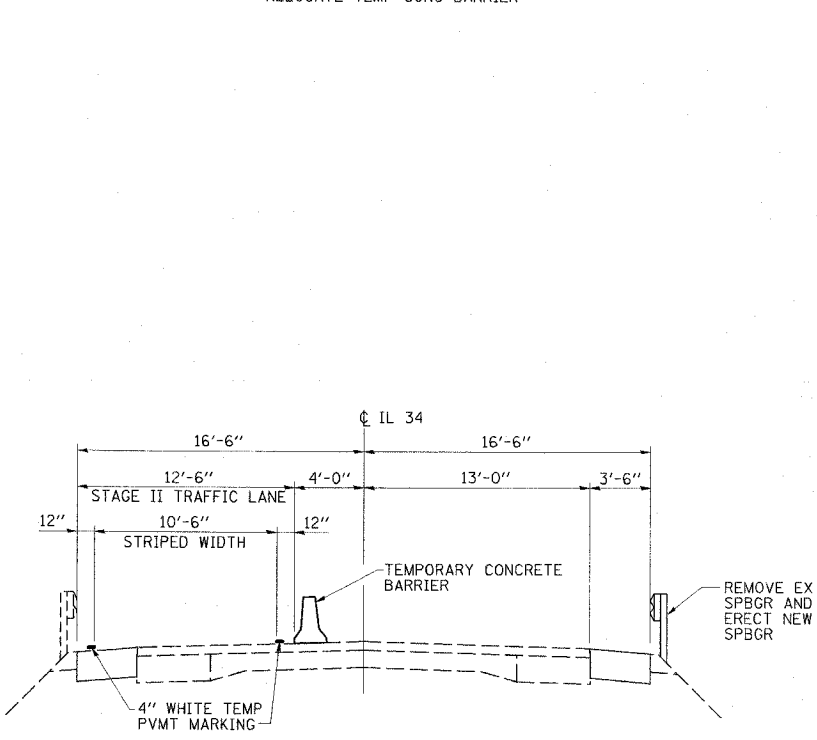
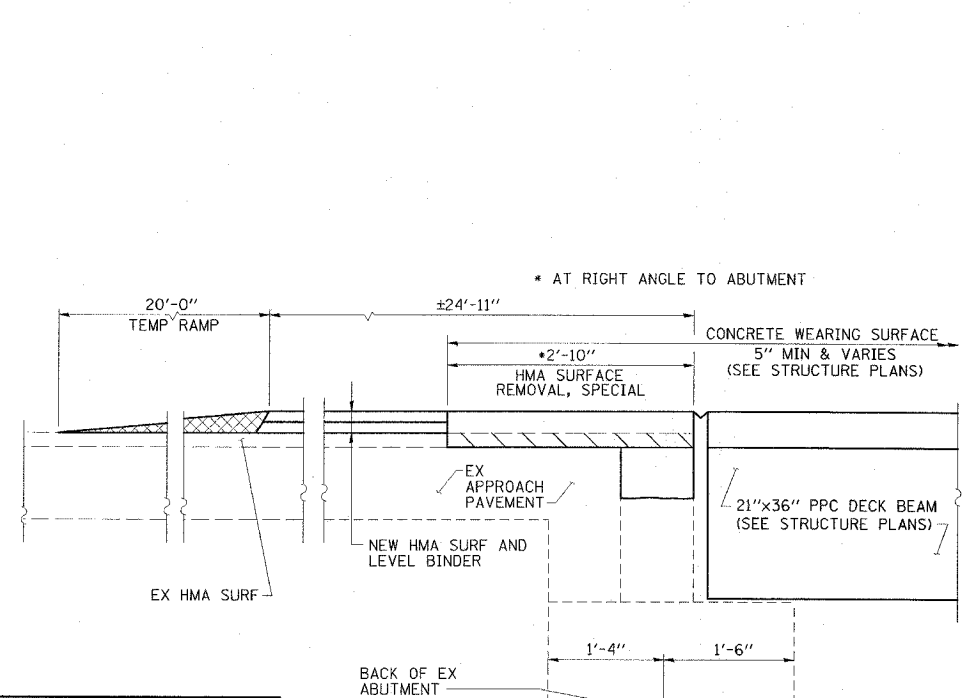
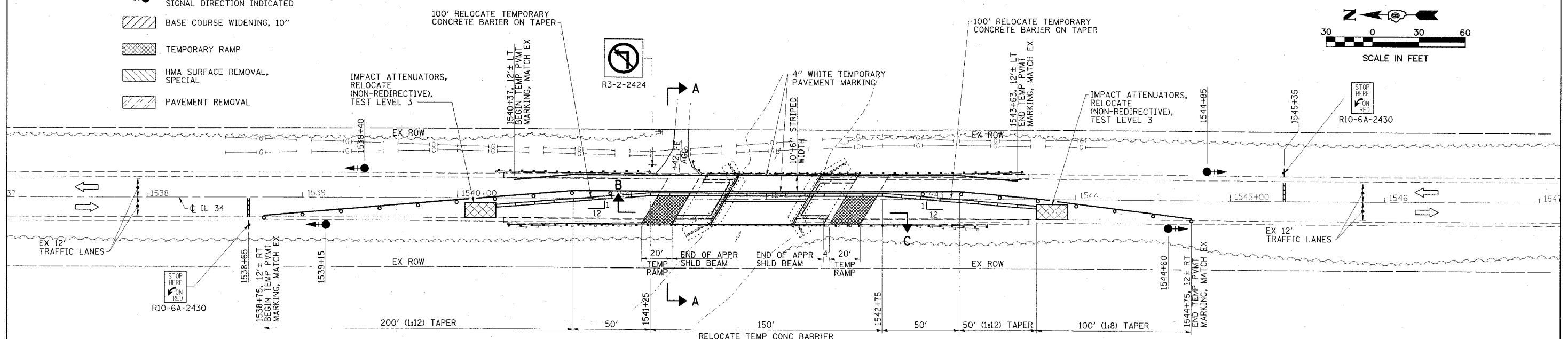
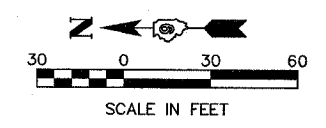


CONTRACT NO. 78031

FAP RTE	SECTION	COUNTY	TOTAL SHEETS	SHEET NO.
869	105BR-1	SALINE	118	13
STA. 1537+00		TO STA. 1547+00		
FED. ROAD DIST. NO.		ILLINOIS FED. AID PROJECT		

LEGEND

- TRAFFIC SIGNAL WITH BACKPLATE, SIGNAL DIRECTION INDICATED
- BASE COURSE WIDENING, 10"
- TEMPORARY RAMP
- HMA SURFACE REMOVAL, SPECIAL
- PAVEMENT REMOVAL



GENERAL NOTES

1. TRAFFIC CONTROL SHALL BE ERECTED AS SHOWN AND ACCORDING TO "TRAFFIC CONTROL AND PROTECTION, STANDARD 701321."
2. SEE SPECIAL PROVISIONS FOR ADDITIONAL TRAFFIC CONTROL REQUIREMENTS.
3. COORDINATE LOCATION OF SIGNALS WITH FINAL WORK AS DIRECTED BY THE ENGINEER.
4. CONSTRUCT TEMPORARY RUMBLE STRIPS AT LOCATIONS SHOWN ON STANDARD 701321.
5. THE DIMENSION SHOWN ON THE WIDTH RESTRICTION SIGN (W12-1102(0)-48) SHOWN ON STANDARD 701321 SHALL BE 11'-0" FOR STAGE II CONSTRUCTION.
6. ADDITIONAL SIGNAGE AND BARRICADES SHOWN FOR SIDEROADS AND ENTRANCES SHALL BE INCLUDED IN THE COST OF STANDARD 701321.

SCHEDULE OF QUANTITIES

RELOCATE TEMPORARY CONCRETE BARRIER	STATION TO	STATION	FEET
	1540+25	1543+75	350
		TOTAL	350

IMPACT ATTENUATORS, RELOCATE (NON-REDIRECTIVE), TEST LEVEL 3 - 2 EACH

STAGE II CONSTRUCTION
 FAP RTE 869 (IL 34)
 SECTION 105BR-1
 SALINE COUNTY

ESCA CONSULTANTS, INC.

DESIGNED BY: DAJ 02/08
 DRAWN BY: CJG/JPC 02/08
 CHECKED BY: MTD 02/08
 APPROVED BY: RDP 04/08

SECTION B

SECTION A-A

SECTION C

PLOT DATE = 04/08
 PLOT SCALE = AS SHOWN
 REFERENCE = 04/08