

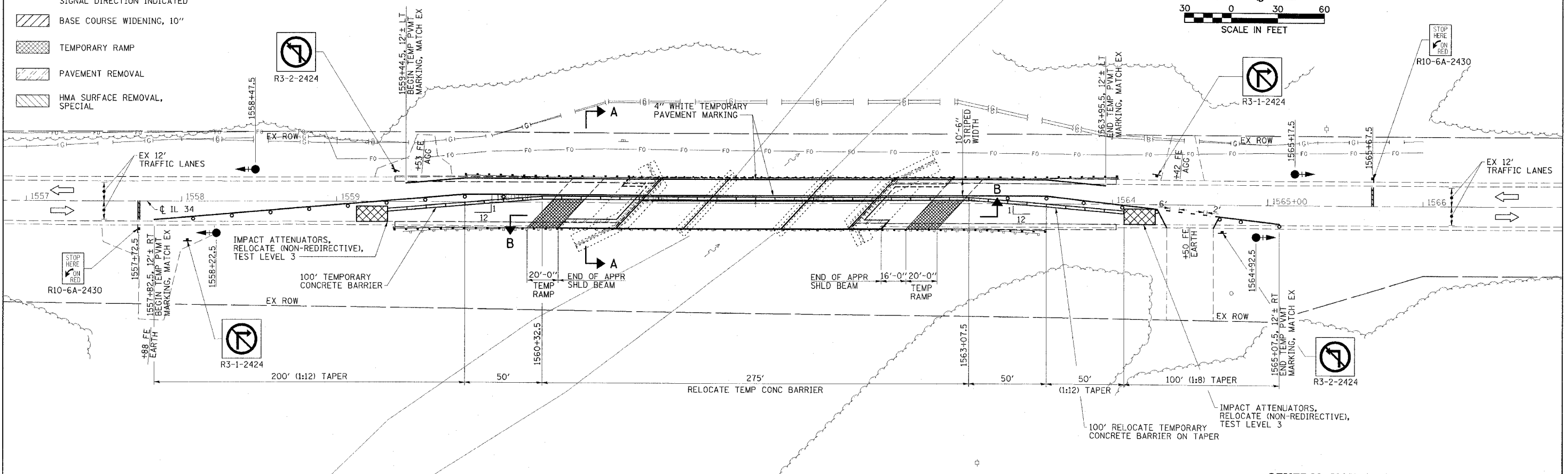
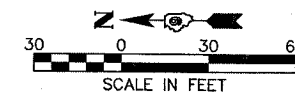


CONTRACT NO. 78031

FAP RTE	SECTION	COUNTY	TOTAL SHEETS	SHEET NO.
869	105BR-2	SALINE	118	15
STA. 1557+00		TO STA. 1567+00		
FED. ROAD DIST. NO.	ILLINOIS	FED. AID PROJECT		

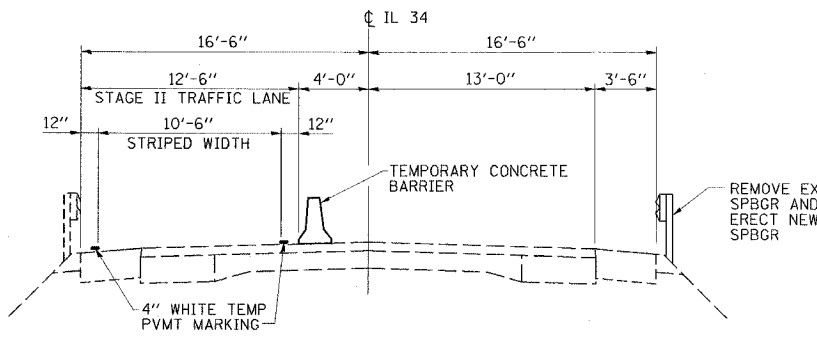
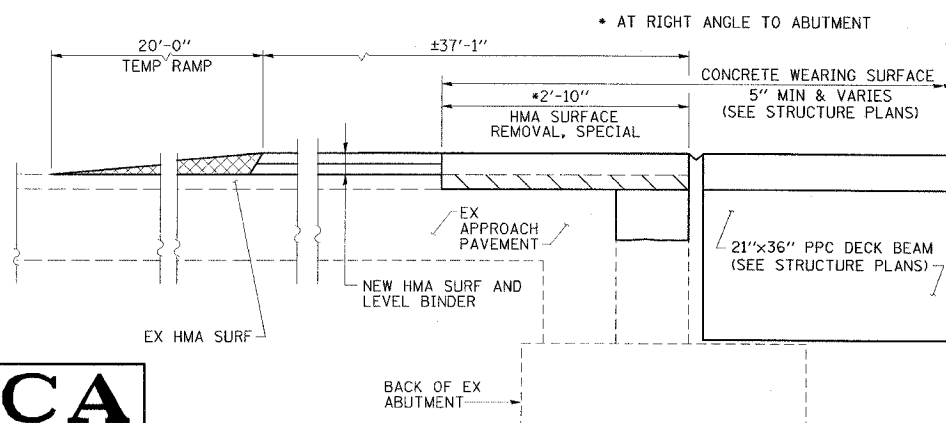
**LEGEND**

- TRAFFIC SIGNAL WITH BACKPLATE, SIGNAL DIRECTION INDICATED
- BASE COURSE WIDENING, 10"
- TEMPORARY RAMP
- PAVEMENT REMOVAL
- HMA SURFACE REMOVAL, SPECIAL



**GENERAL NOTES**

1. TRAFFIC CONTROL SHALL BE ERECTED AS SHOWN AND ACCORDING TO "TRAFFIC CONTROL AND PROTECTION, STANDARD 701321."
2. SEE SPECIAL PROVISIONS FOR ADDITIONAL TRAFFIC CONTROL REQUIREMENTS.
3. COORDINATE LOCATION OF SIGNALS WITH FINAL WORK AS DIRECTED BY THE ENGINEER.
4. CONSTRUCT TEMPORARY RUMBLE STRIPS AT LOCATIONS SHOWN ON STANDARD 701321.
5. THE DIMENSION SHOWN ON THE WIDTH RESTRICTION SIGN (W12-1102(O)-48) SHOWN ON STANDARD 701321 SHALL BE 11'-0" FOR STAGE II CONSTRUCTION.
6. ADDITIONAL SIGNAGE AND BARRICADES SHOWN FOR SIDEROADS AND ENTRANCES SHALL BE INCLUDED IN THE COST OF STANDARD 701321.



**SECTION B**

**SECTION A-A**

**SCHEDULE OF QUANTITIES**

TEMPORARY CONCRETE BARRIER			
STATION TO	STATION	FEET	
1559+32.5	1560+32.5	100	
	TOTAL	-	100
RELOCATE TEMPORARY CONCRETE BARRIER			
STATION TO	STATION	FEET	
1560+32.5	1560+07.5	375	
	TOTAL	-	375
IMPACT ATTENUATORS, RELOCATE (NON-REDIRECTIVE), TEST LEVEL 3 - 2 EACH			

**STAGE II CONSTRUCTION**  
**FAP RTE 869 (IL 34)**  
**SECTION 105BR-2**  
**SALINE COUNTY**

**ESCA CONSULTANTS, INC.**

DESIGNED BY:	DAJ	02/08
DRAWN BY:	JPC	02/08
CHECKED BY:	MTD	02/08
APPROVED BY:	RDP	04/08

DATE = #DATE#  
 FILE NAME = #FILE#  
 PLOT SCALE = #SCALE#  
 REFERENCE = #REF#