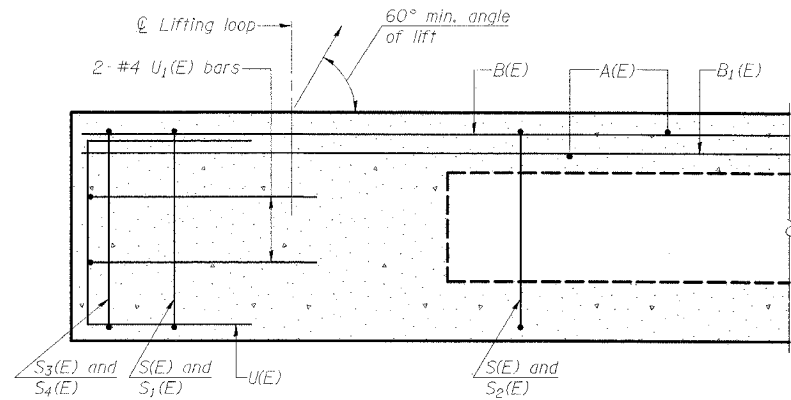


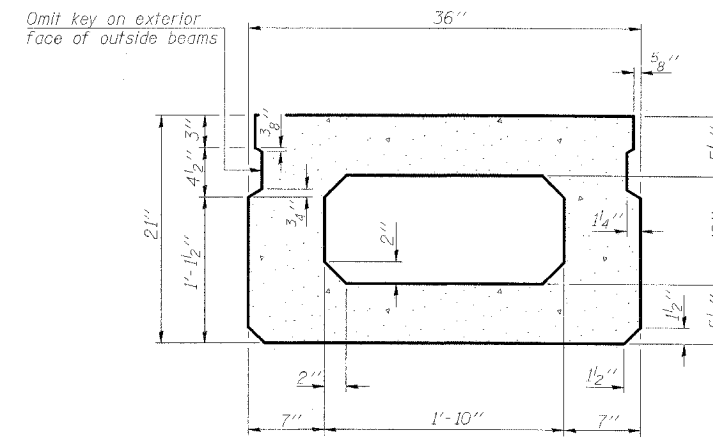
STATE OF ILLINOIS
DEPARTMENT OF TRANSPORTATION

ROUTE NO.	SECTION	COUNTY	SHEET NO.	SHEET	SHEET NO. 6
FAP 869	105BR-1	SALINE	118	28	18 SHEETS
FED. ROAD DIST. NO. 9	ILLINOIS	FED. AID PROJECT	AID		

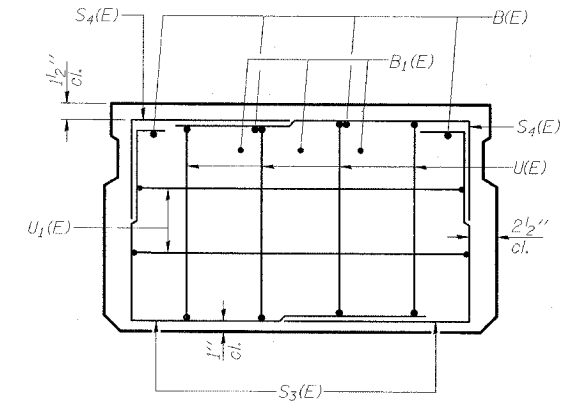
78031



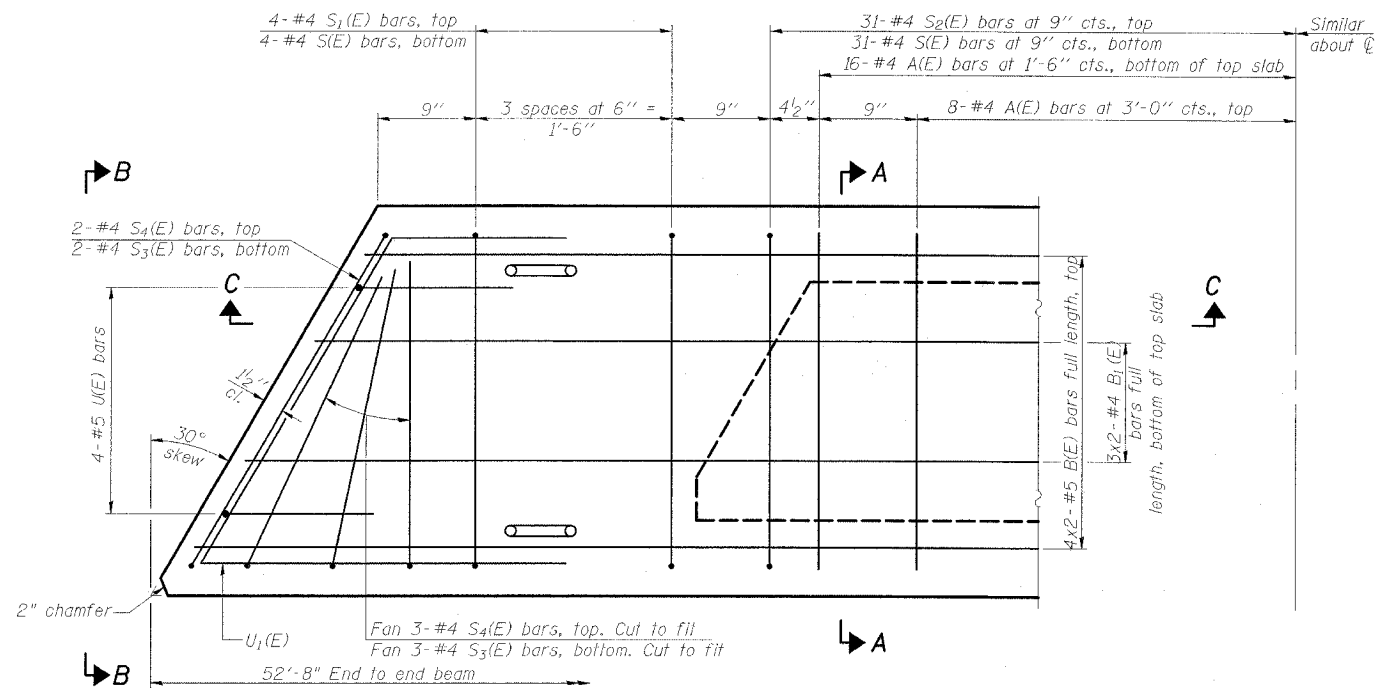
SECTION C-C



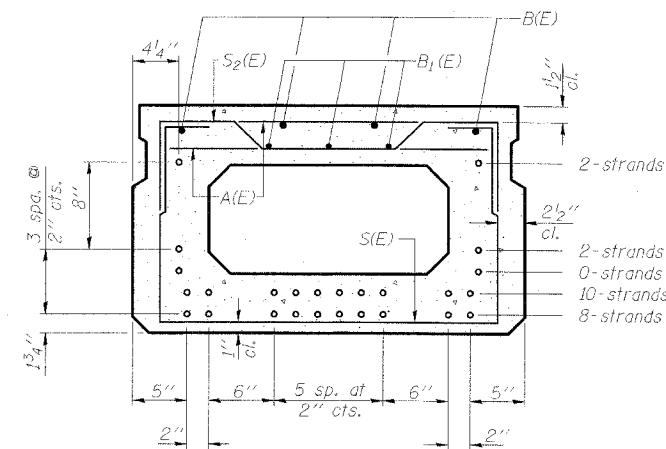
SECTION A-A
(Showing dimensions)



VIEW B-B



PLAN VIEW



SECTION A-A
(Showing reinforcement and permissible strand locations)

22-1/2" ϕ strands, each strand stressed to 30,900 lbs.
Note: Place the number of strands specified in each row symmetrically about the centerline of beam in the permissible strand locations shown.

MIN. BAR LAP
#5 bar = 2'-2"

BAR LIST
ONE BEAM ONLY
(For information only)

Bar	No.	Size	Length	Shape
A(E)	48	#4	2'-7"	—
B(E)	8	#5	27'-3"	—
B1(E)	6	#4	27'-0"	—
S(E)	70	#4	6'-5"	□
S1(E)	8	#4	5'-7"	□
S2(E)	62	#4	5'-10"	□
S3(E)	10	#4	4'-11"	□
S4(E)	10	#4	4'-6"	□
U(E)	8	#5	4'-0"	□
U1(E)	4	#4	6'-10"	□

Note: See sheet 7 of 18 for additional details and Bill of Material.

- Notes:
1. Spacing of S(E) and S2(E) bars may be adjusted up to 4" in the immediate area of the transverse tie diaphragms to miss the block outs for the transverse ties.
 2. Adjust reinforcement locations to clear dowel holes at fixed ends.

ESCA
CONSULTANTS, INC.

DESIGNED BY:	JMS	02/08
DRAWN BY:	HAS	02/08
CHECKED BY:	ELH	02/08
APPROVED BY:	RDP	02/08

SUPERSTRUCTURE DETAILS
IL 34 OVER
MIDDLE FORK SALINE RIVER OVERFLOW
FAP ROUTE 869 - SECTION 105BR-1
SALINE COUNTY
STATION 1542+00.00
STRUCTURE NO. 083-0037