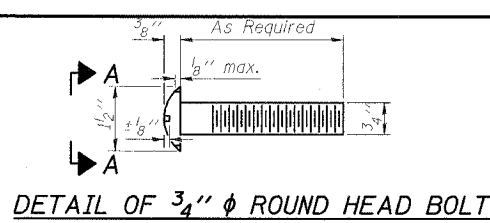
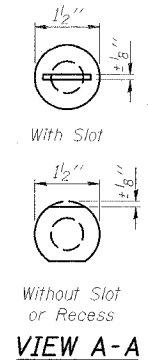


STATE OF ILLINOIS
DEPARTMENT OF TRANSPORTATION

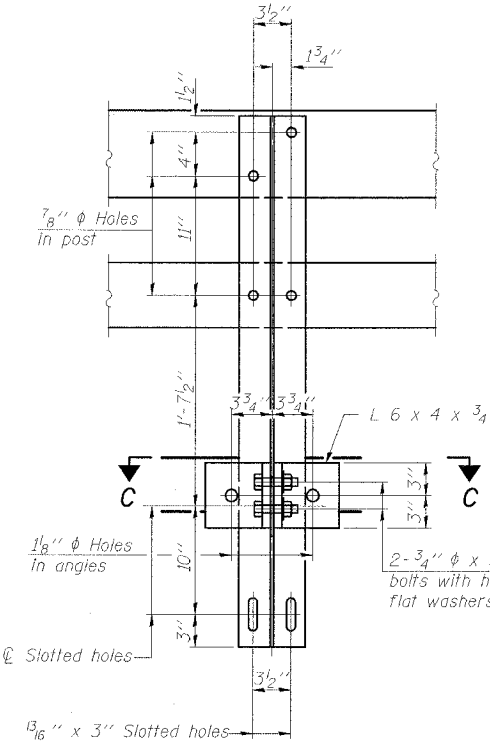
ROUTE NO.	SECTION	COUNTY	STATION	SHEET	SHEET NO.
FAP 869	105BR-1	SALINE	118	34	18 SHEETS
FED. ROAD DIST. NO. 1	ILLINOIS	FED. AID PROJECT - AID	78031		



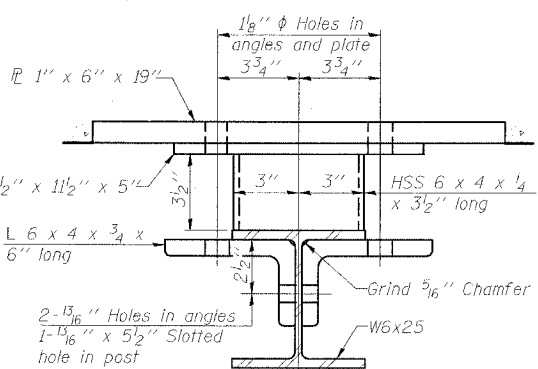
DETAIL OF 3/4" ϕ ROUND HEAD BOLT



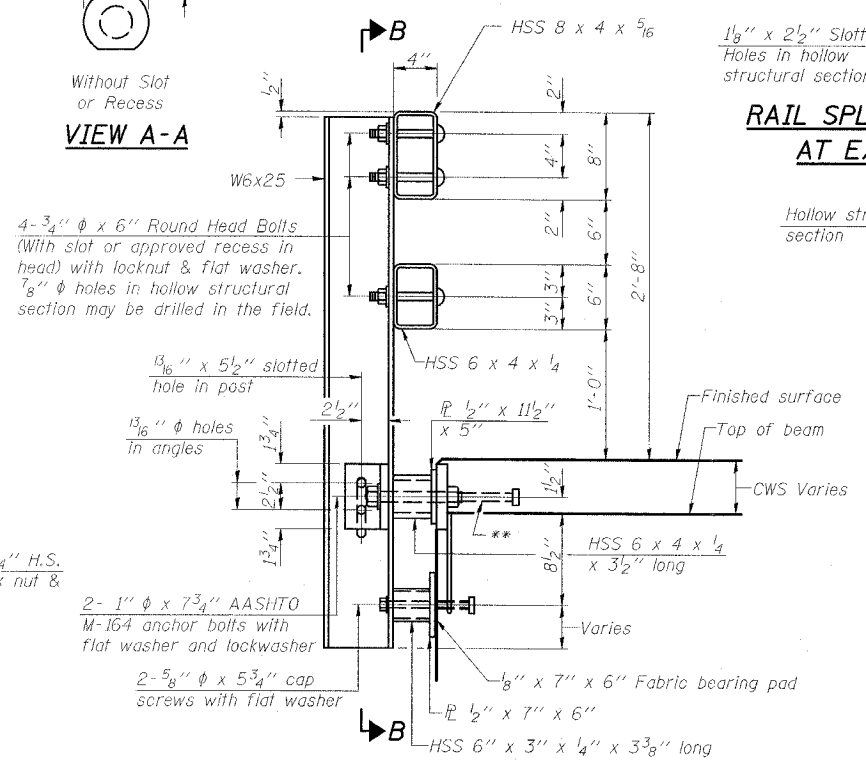
VIEW A-A



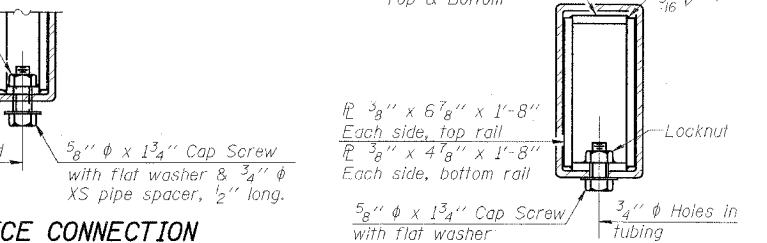
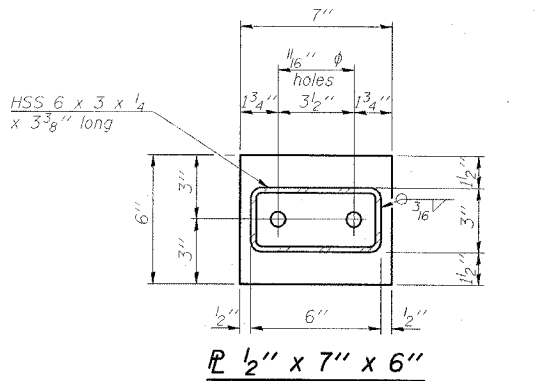
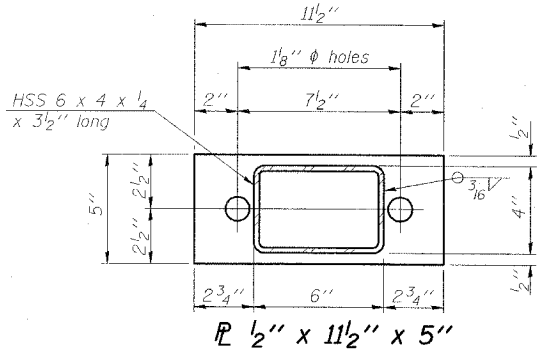
SECTION B-B



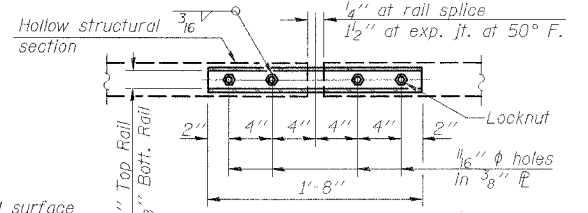
SECTION C-C



SECTION AT RAIL POST

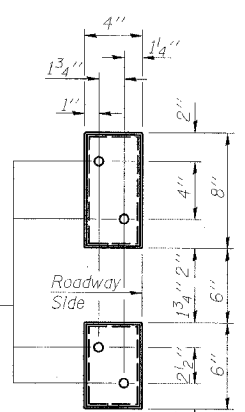


RAIL SPLICE CONNECTION
AT EXPANSION JT.

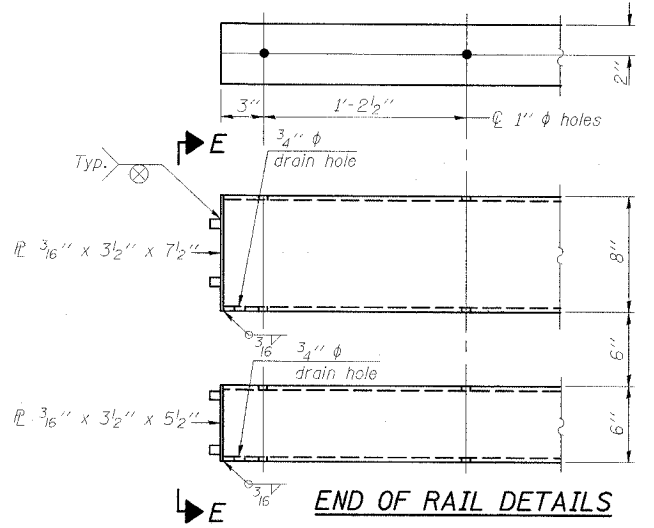


PLAN-BOTT. SPLICE R
TYPICAL

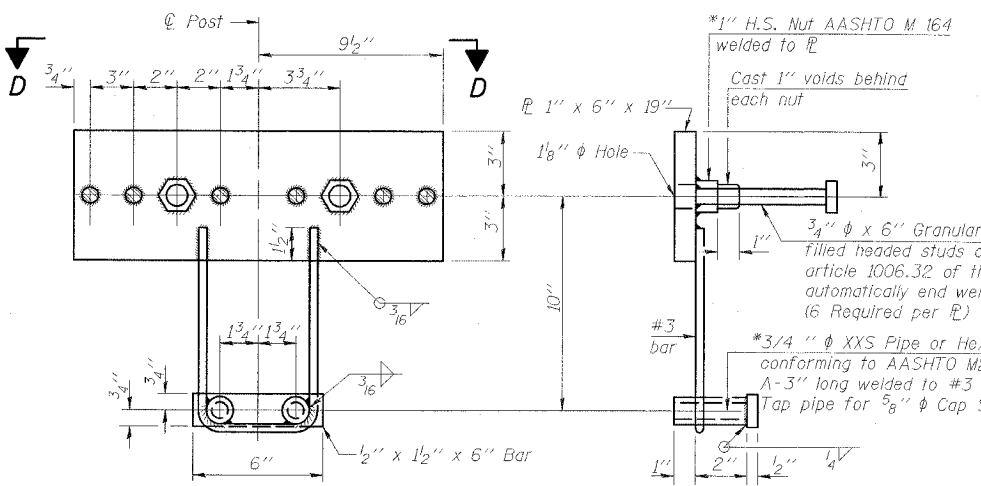
SECTION AT
RAIL SPLICE



VIEW E-E



END OF RAIL DETAILS



ANCHOR DEVICE

Notes:
All field drilled holes shall be coated with an approved zinc rich paint before erection.
For multi-span bridges, sufficient 1/4" x 6" x 1'-2" galvanized steel shims shall be provided to align rail between adjacent spans. Cost included with Steel Railing, Type SM.
Steel rail elements shall be galvanized according to Article 509.05 of the Standard Specifications.
**The studs of the anchor devices shall be placed below the top reinforcement bars and the outermost longitudinal reinforcement bar shall be placed directly above the studs of the rail post anchor device.

BILL OF MATERIAL

Item	Unit	Quantity
Steel Railing, Type SM	Foot	196

STEEL RAILING, TYPE SM
IL 34 OVER
MIDDLE FORK SALINE RIVER OVERFLOW
FAP ROUTE 869 - SECTION 105BR-1
SALINE COUNTY
STATION 1542+00.00
STRUCTURE NO. 083-0037

ESCA
CONSULTANTS, INC.

DESIGNED BY:	JMS	02/08
DRAWN BY:	HAS	02/08
CHECKED BY:	ELH	02/08
APPROVED BY:	RDP	02/08

R-34CWS

9-3-07 (6'-3" Maximum Post Spacing) (5" minimum to 7 7/8" maximum CWS thickness)

*Threaded areas shall be plugged or blocked off during casting of beam. Galvanized after fabrication.