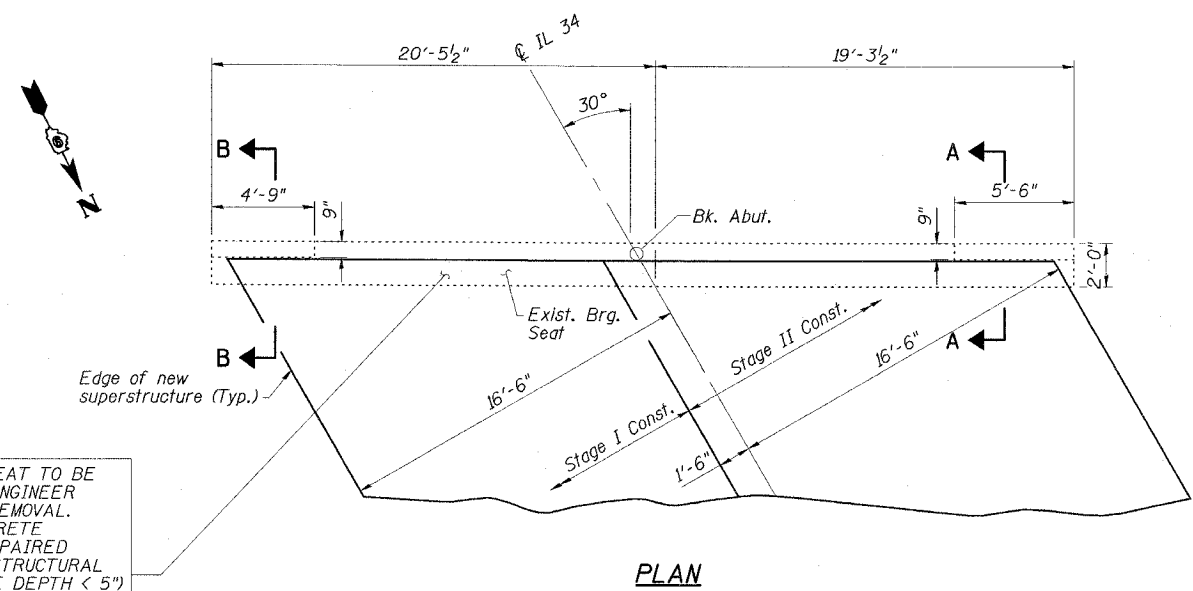
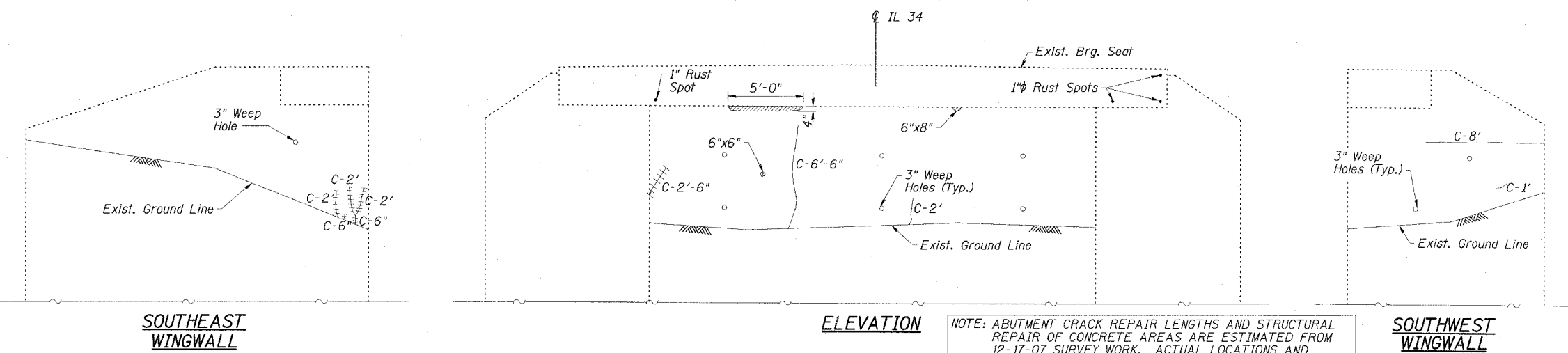
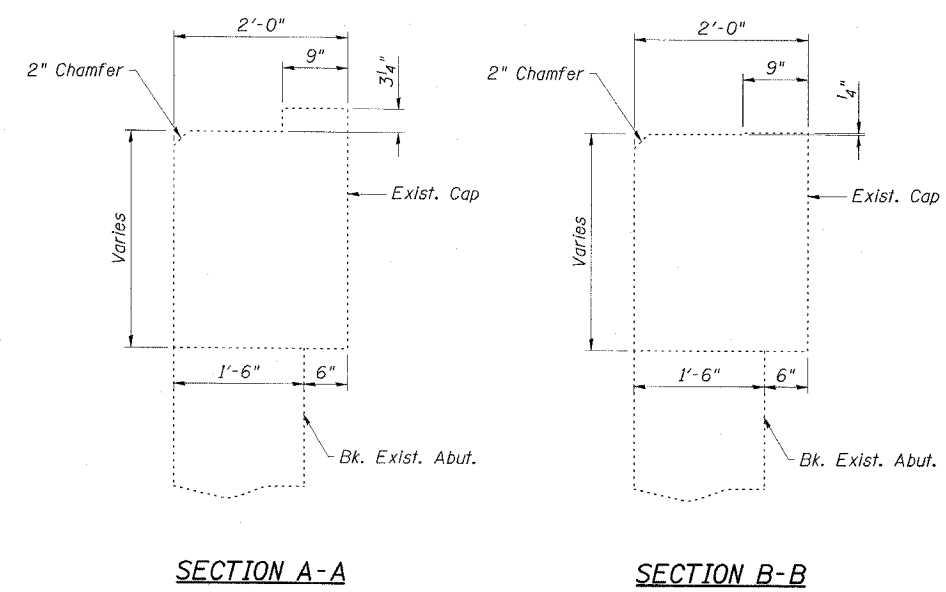


STATE OF ILLINOIS
DEPARTMENT OF TRANSPORTATION

ROUTE NO.	SECTION	COUNTY	DISTRICT	SHEET	SHEET NO. 16 13 SHEETS
FAP 869	105BR-1	SALINE	118	38	
FED. ROAD DIST. NO. 9	F.LINKAGE	FED. AID PROJECT - AID	78031		



EXISTING BEARING SEAT TO BE INSPECTED BY THE ENGINEER AFTER DECK BEAM REMOVAL. DETERIORATED CONCRETE AREAS SHALL BE REPAIRED (ESTIMATED 15 S.F. STRUCTURAL REPAIR OF CONCRETE DEPTH < 5") AND CRACKS SHALL BE SEALED (ESTIMATED 20' EPOXY CRACK INJECTION) IF FOUND. CONCRETE SEALER SHALL BE APPLIED TO CONCRETE REPAIR AREAS.



**SOUTH ABUTMENT
BILL OF MATERIAL**

ITEM	UNIT	TOTAL
Concrete Sealer	Sq. Ft.	15
Epoxy Crack Injection	Foot	47
Structural Repair of Concrete (Depth Equal to or Less Than 5")	Sq. Ft.	18

- REPAIR LEGEND**
Inspection Date: 12/17/07
- C-6' Crack to be epoxy injected
 - Delaminated or Spalled Area - Use Structural Repair of Concrete
 - Efflorescent Crack
 - Rust Spot

NOTE: ABUTMENT CRACK REPAIR LENGTHS AND STRUCTURAL REPAIR OF CONCRETE AREAS ARE ESTIMATED FROM 12-17-07 SURVEY WORK. ACTUAL LOCATIONS AND QUANTITIES OF REPAIRS SHALL BE SHOWN BY THE ENGINEER ON THE AS-BUILT PLANS FOR THIS SECTION.

**SOUTH ABUTMENT
IL 34 OVER
MIDDLE FORK SALINE RIVER OVERFLOW
FAP ROUTE 869 - SECTION 105BR-1
SALINE COUNTY
STATION 1542+00.00
STRUCTURE NO. 083-0037**

ESCA
CONSULTANTS, INC.

DESIGNED BY:	JMS	02/08
DRAWN BY:	HAS	02/08
CHECKED BY:	ELH	02/08
APPROVED BY:	RDP	02/08