

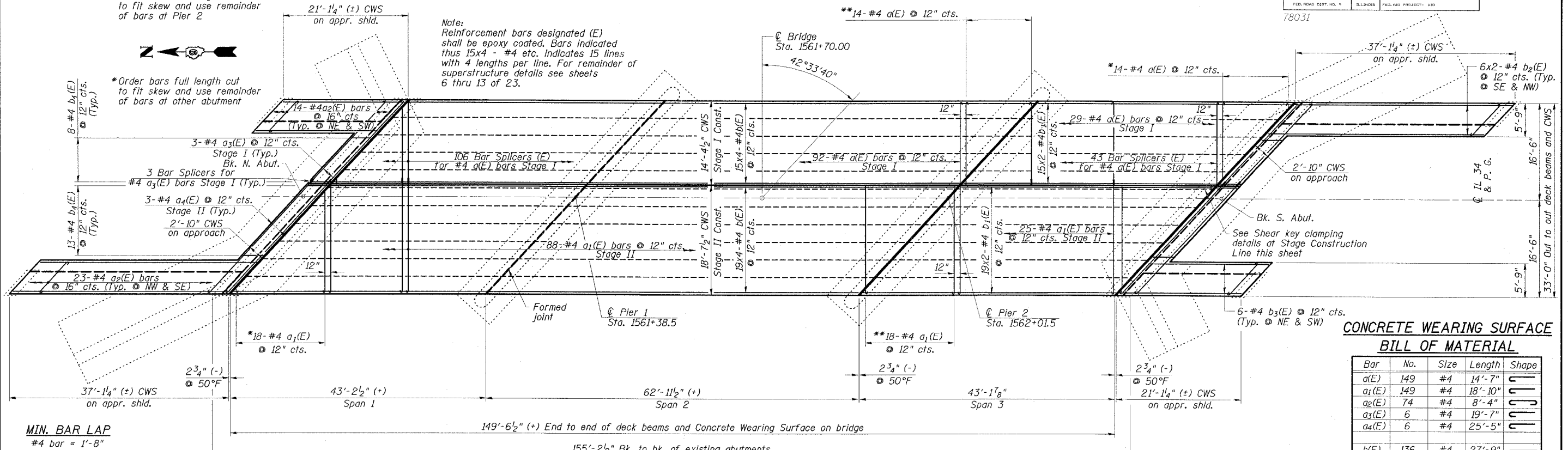
STATE OF ILLINOIS
DEPARTMENT OF TRANSPORTATION

ROUTE NO.	SECTION	COUNTY	STATION	SHEET NO.
FAP 869	105BR-2	SALINE	118	54
SHEET NO. 5				
23 SHEETS				

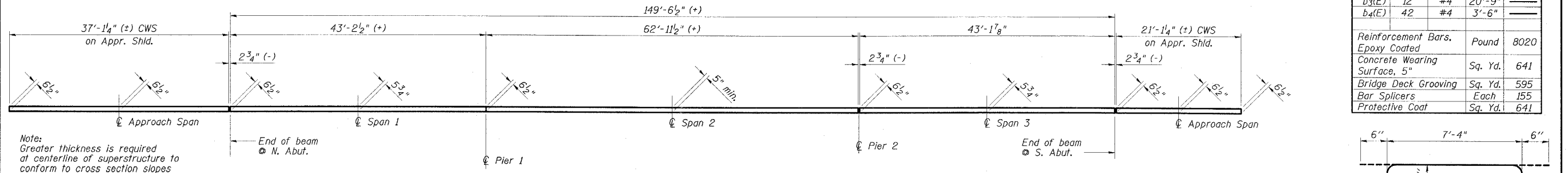
** Order bars full length cut to fit skew and use remainder of bars at Pier 2

* Order bars full length cut to fit skew and use remainder of bars at other abutment

Note:
Reinforcement bars designated (E) shall be epoxy coated. Bars indicated thus 15x4 - #4 etc. indicates 15 lines with 4 lengths per line. For remainder of superstructure details see sheets 6 thru 13 of 23.



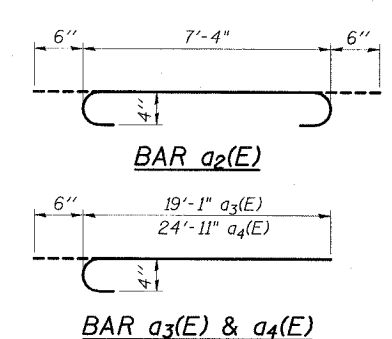
PLAN - WEARING SURFACE



REINFORCED CONCRETE WEARING SURFACE PROFILE
(At west edge of bridge deck; east edge similar)

CONCRETE WEARING SURFACE
BILL OF MATERIAL

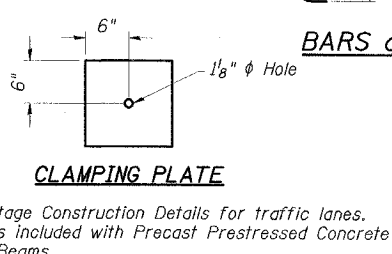
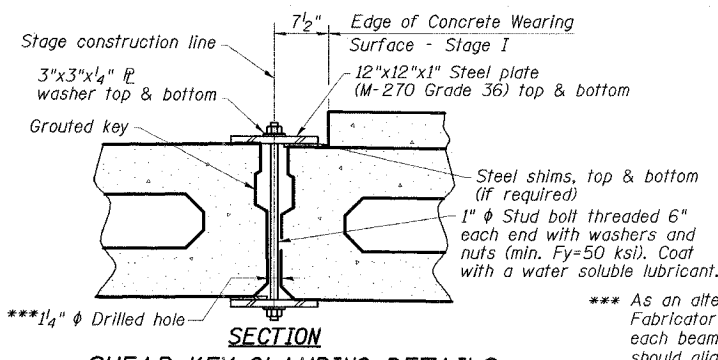
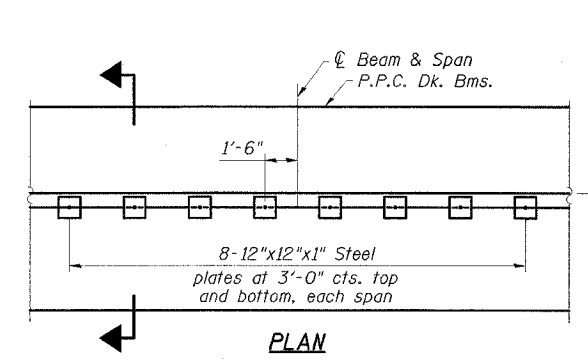
Bar	No.	Size	Length	Shape
a(E)	149	#4	14'-7"	
a1(E)	149	#4	18'-10"	
a2(E)	74	#4	8'-4"	
a3(E)	6	#4	19'-7"	
a4(E)	6	#4	25'-5"	
b(E)	136	#4	27'-9"	
b1(E)	68	#4	22'-1"	
b2(E)	24	#4	19'-3"	
b3(E)	12	#4	20'-9"	
b4(E)	42	#4	3'-6"	
Reinforcement Bars, Epoxy Coated		Pound	8020	
Concrete Wearing Surface, 5"		Sq. Yd.	641	
Bridge Deck Grooving		Sq. Yd.	595	
Bar Splicers		Each	155	
Protective Coat		Sq. Yd.	641	



SUPERSTRUCTURE
IL 34 OVER
MIDDLE FORK SALINE RIVER
FAP ROUTE 869 - SECTION 105BR-2
SALINE COUNTY
STATION 1561+70.00
STRUCTURE NO. 083-0038

ESCA
CONSULTANTS, INC.

DESIGNED BY:	JMS	02/08
DRAWN BY:	HAS	02/08
CHECKED BY:	ELH	02/08
APPROVED BY:	RDP	02/08



Note:
As an alternate to the drilled holes, the Contractor may request the Fabricator to cast 2" diameter semi-circular recesses in the sides of each beam adjacent to the stage construction line. These recesses should align to form a hole at the appropriate location for the clamping device bolts. If the Contractor elects to use this alternate, the details shall be identified on the shop drawings.