

STATE OF ILLINOIS  
DEPARTMENT OF TRANSPORTATION

ROUTE NO.	SECTION	COUNTY	SHEET NO.	SHEET	SHEET NO. 12
FAP 869	105BR-2	SALINE	118	61	23 SHEETS
FED. ROAD DIST. NO. 4	ILLINOIS	FED. ROAD PROJECT	AND		

NOTES

78031  
After beams have been erected, holes shall be drilled into substructure and dowels rods placed. Dowel holes shall be filled with non-shrink grout to top of beam and allowed to cure min. 24 hrs. prior to grouting the shear keys.

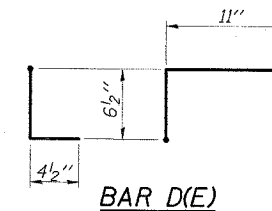
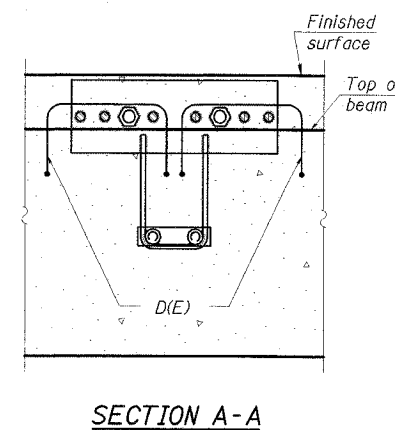
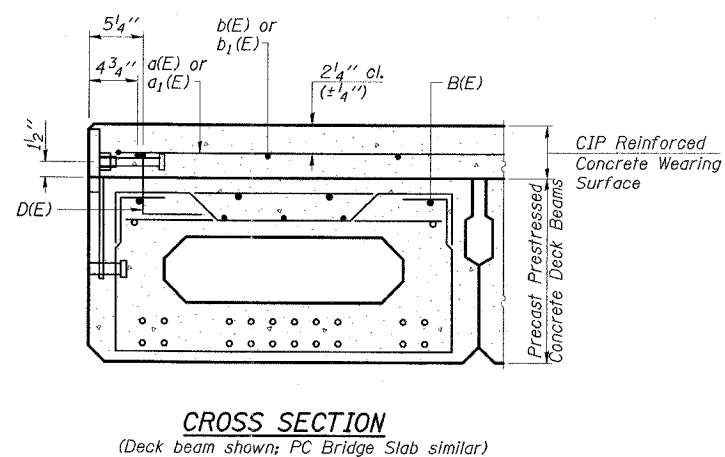
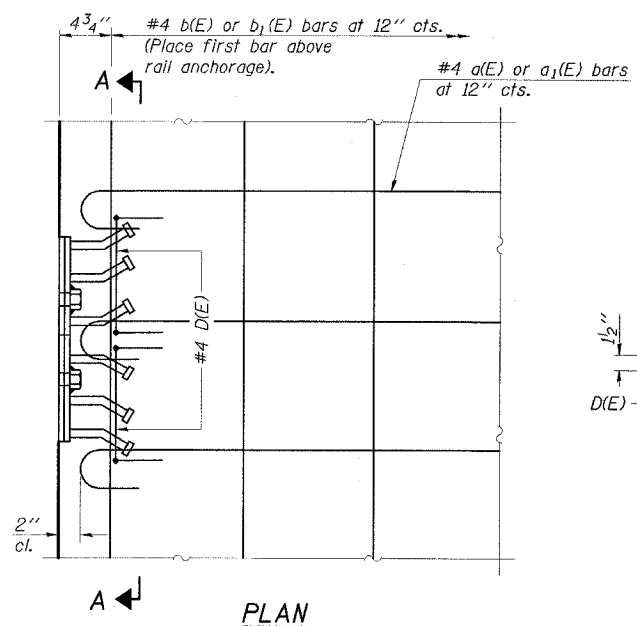
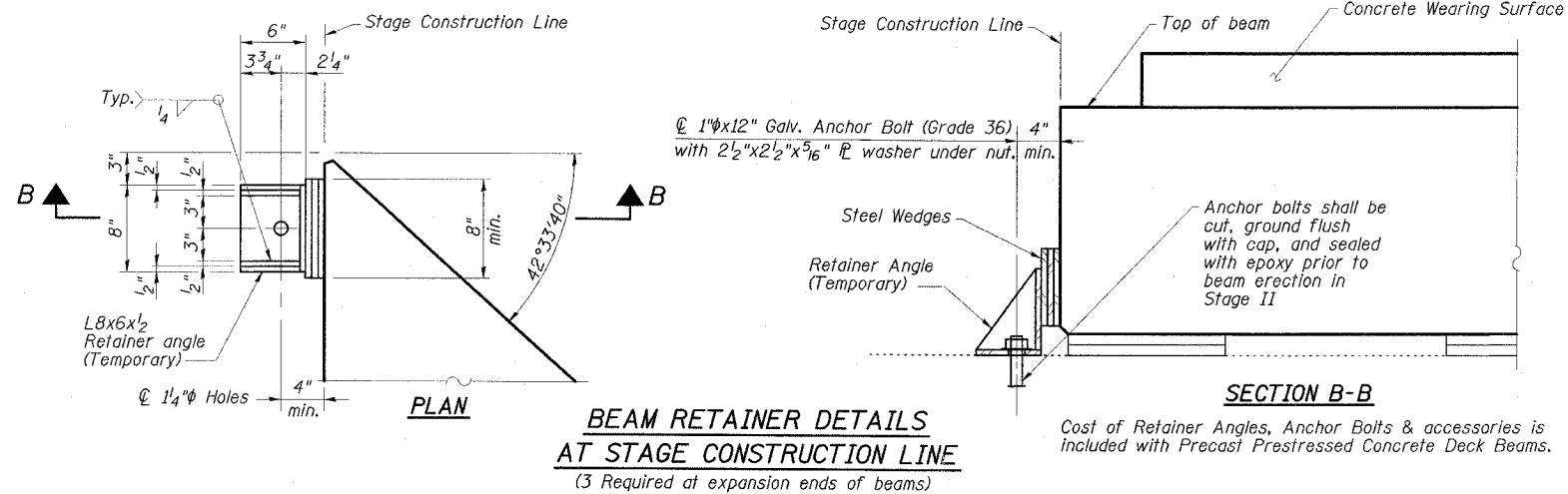
Concrete wearing surface to be poured after grouting the shear keys.

Dowel rods drilled in cap are included in the cost of Precast Prestressed Concrete Deck Beams or Precast Concrete Bridge Slabs.

The rail anchorage shall be cast with the beam or slab and the wearing surface shall be cast in the field. Formwork necessary for the wearing surface may be secured utilizing the bottom rail anchorage inserts and/or additional inserts cast into the beam or slab. Drilling into the beam or slab will not be permitted.

Anchor bolts shall be ASTM F1554 all-thread (or an Engineer-approved alternate material) of the grade(s) and diameter(s) specified. ASTM A307 Grade C anchor bolts may be used in lieu of ASTM F1554 Grade 36 (Fy=36ksi). The corresponding specified grade of AASHTO M314 anchor bolts may be used in lieu of ASTM F1554.

Drilled and set anchor bolts shall be installed according to Article 52.1.06 of the Standard Specifications.



SUPERSTRUCTURE AND APPROACH DETAILS  
IL 34 OVER  
MIDDLE FORK SALINE RIVER  
FAP ROUTE 869 - SECTION 105BR-2  
SALINE COUNTY  
STATION 1561+70.00  
STRUCTURE NO. 083-0038

**ESCA**  
CONSULTANTS, INC.  
DESIGNED BY: JMS 02/08  
DRAWN BY: HAS 02/08  
CHECKED BY: ELH 02/08  
APPROVED BY: RDP 02/08