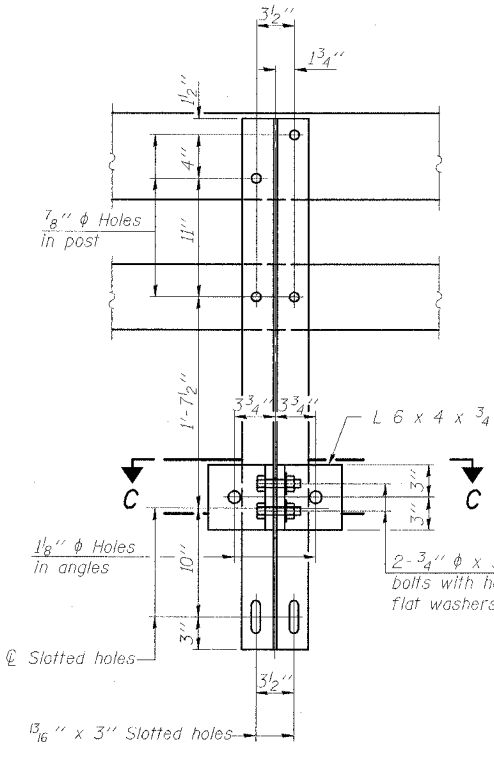
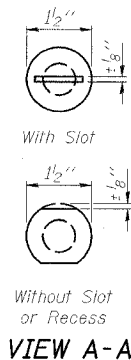
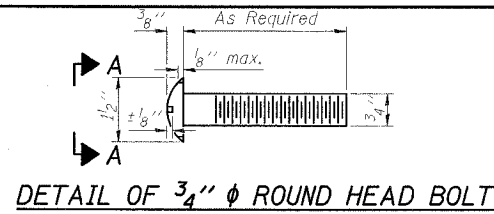
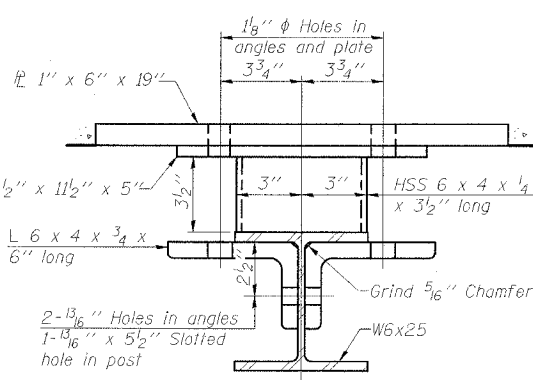


STATE OF ILLINOIS
DEPARTMENT OF TRANSPORTATION

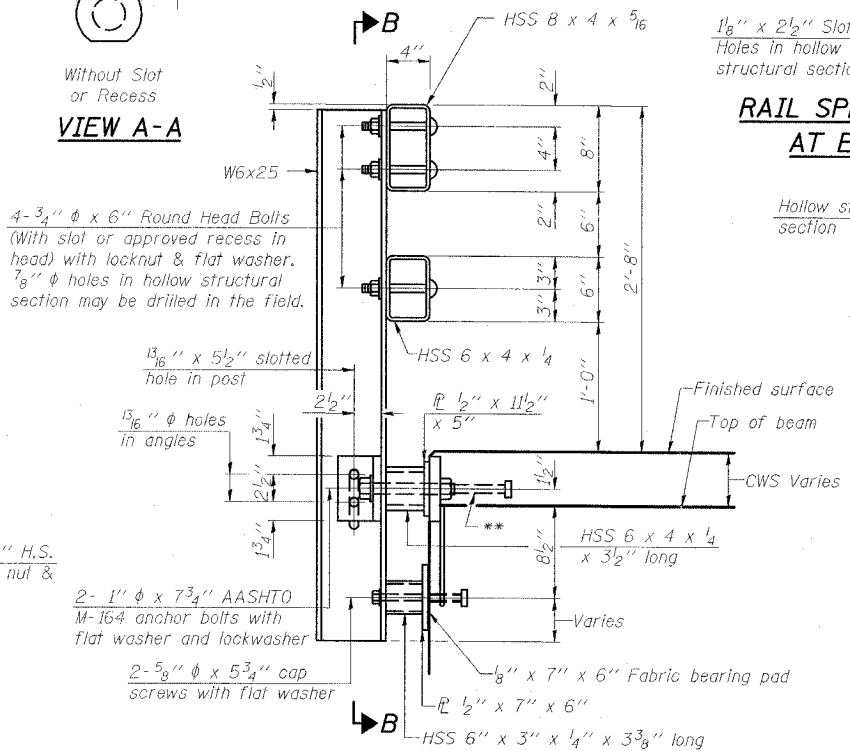
ROUTE NO.	SECTION	COUNTY	DATE	SHEET NO.	SHEET NO. 14 23 SHEETS
FAP 869	105BR-2	SALINE	118	63	
FED. ROAD DIST. NO. 4		TITLE	FED. AID PROJECT - AID		



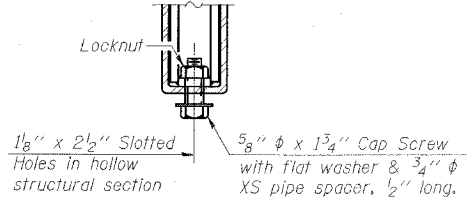
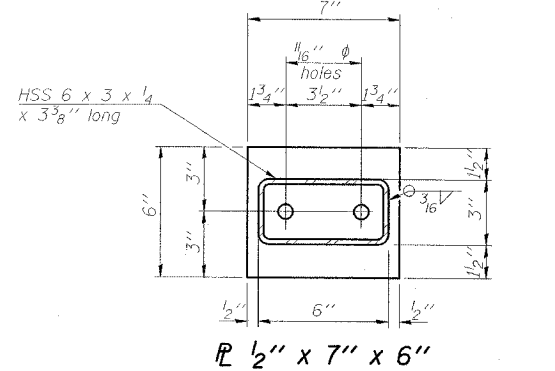
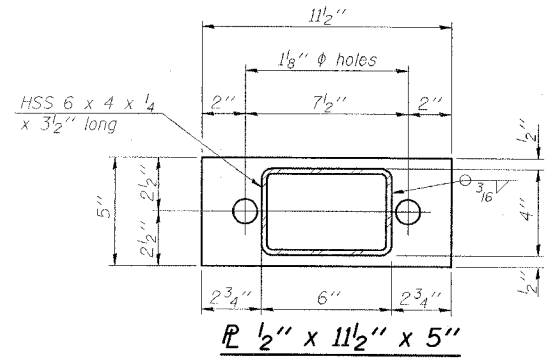
SECTION B-B



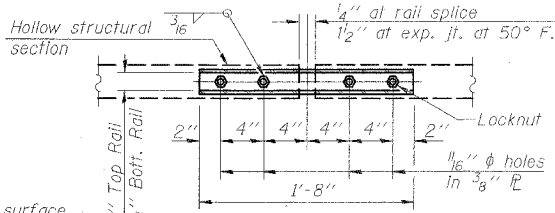
SECTION C-C



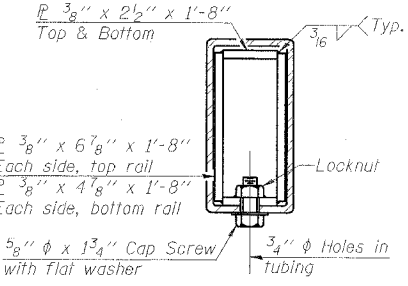
SECTION AT RAIL POST



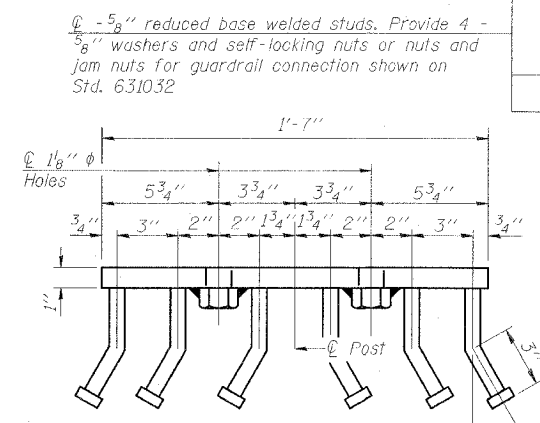
RAIL SPLICE CONNECTION
AT EXPANSION JT.



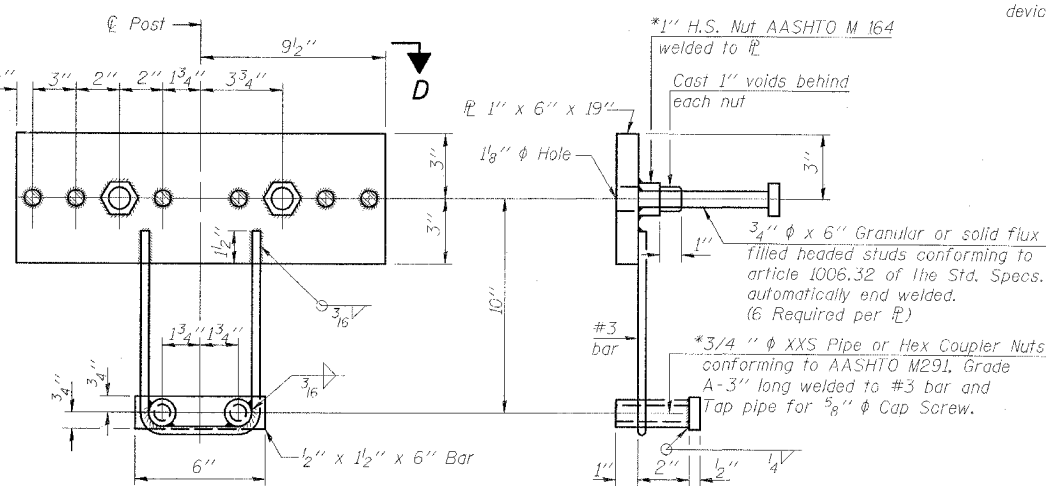
PLAN-BOTT. SPLICE R
TYPICAL



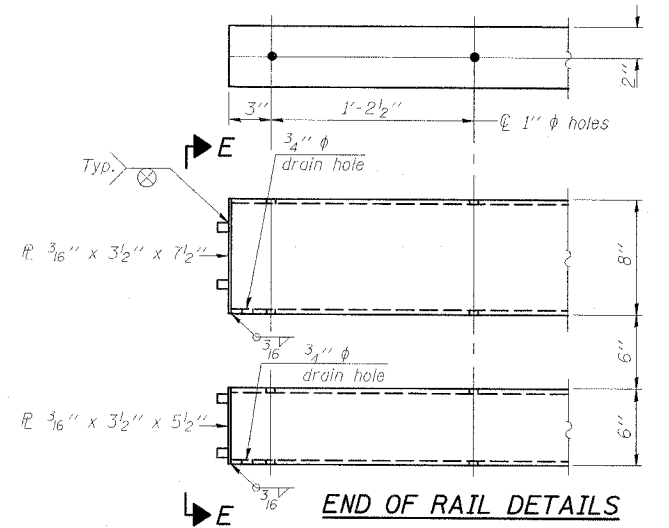
SECTION AT
RAIL SPLICE



VIEW D-D



ANCHOR DEVICE



END OF RAIL DETAILS

Notes:
All field drilled holes shall be coated with an approved zinc rich paint before erection.
For multi-span bridges, sufficient 1/4" x 6" x 1'-2" galvanized steel shims shall be provided to align rail between adjacent spans. Cost included with Steel Railing, Type SM.
Steel rail elements shall be galvanized according to Article 509.05 of the Standard Specifications.
**The studs of the anchor devices shall be placed below the top reinforcement bars and the outermost longitudinal reinforcement bar shall be placed directly above the studs of the rail post anchor device.

BILL OF MATERIAL

Item	Unit	Quantity
Steel Railing, Type SM	Foot	418

STEEL RAILING, TYPE SM
IL 34 OVER
MIDDLE FORK SALINE RIVER
FAP ROUTE 869 - SECTION 105BR-2
SALINE COUNTY
STATION 1561+70.00
STRUCTURE NO. 083-0038

ESCA
CONSULTANTS, INC.

DESIGNED BY:	JMS	02/08
DRAWN BY:	HAS	02/08
CHECKED BY:	ELH	02/08
APPROVED BY:	RDP	02/08

(6'-3" Maximum Post Spacing) (5" minimum to 7 1/8" maximum CWS thickness)

*Threaded areas shall be plugged or blocked off during casting of beam. Galvanized after fabrication.