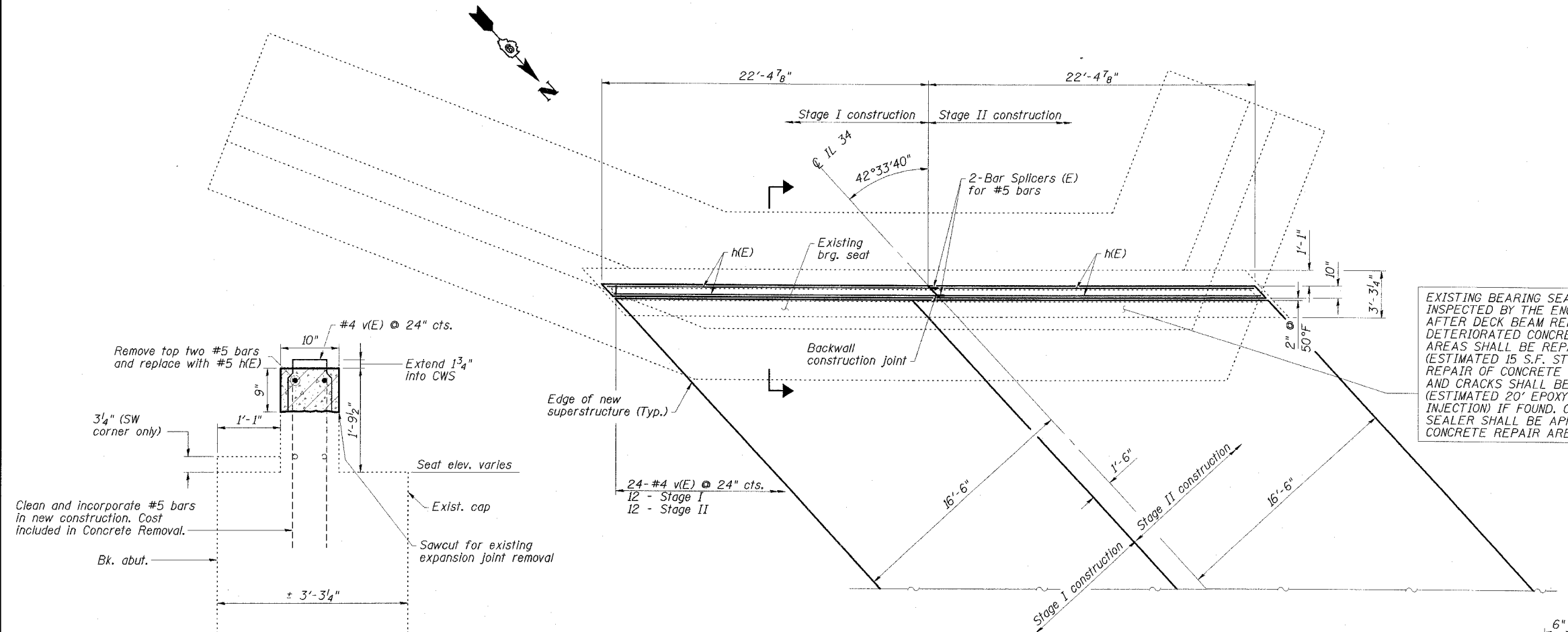


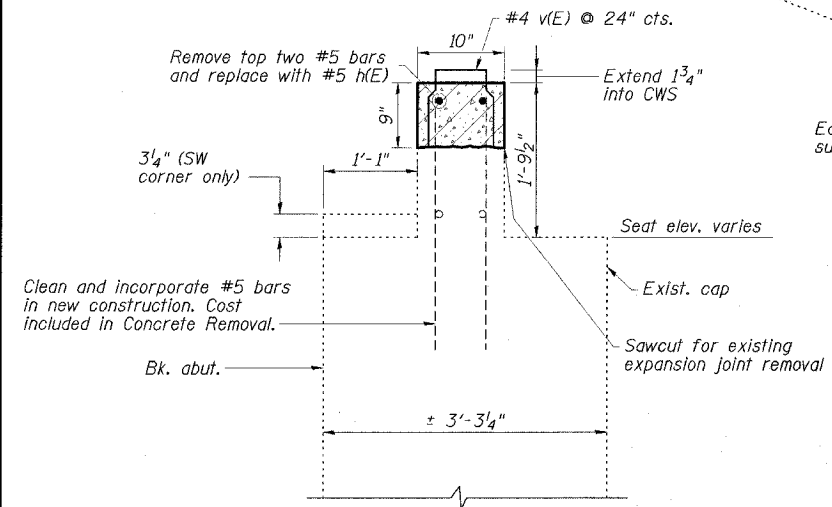
STATE OF ILLINOIS
DEPARTMENT OF TRANSPORTATION

ROUTE NO.	SECTION	COUNTY	JOB NO.	SHEET NO.	SHEET NO. 17 23 SHEETS
FAP 869	105BR-2	SALINE	118	66	
FED. ROAD DIST. NO. 1	ILLINOIS	FED. AID PROJECT - RD			

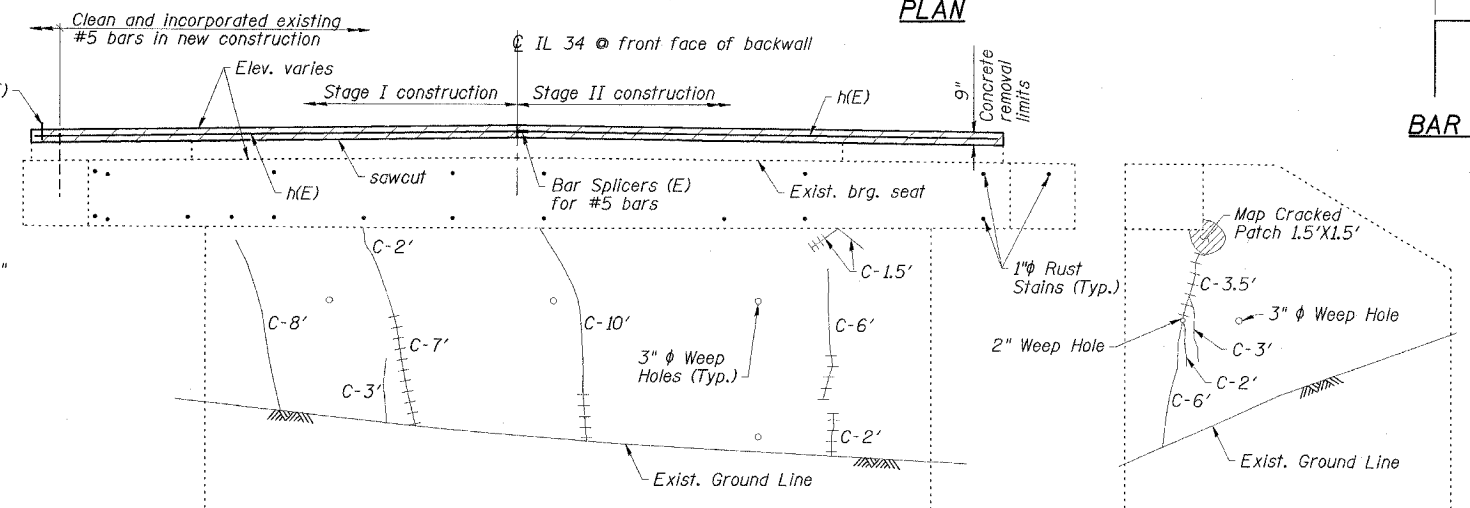
78031



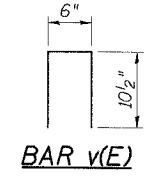
EXISTING BEARING SEAT TO BE INSPECTED BY THE ENGINEER AFTER DECK BEAM REMOVAL. DETERIORATED CONCRETE AREAS SHALL BE REPAIRED (ESTIMATED 15 S.F. STRUCTURAL REPAIR OF CONCRETE DEPTH < 5") AND CRACKS SHALL BE SEALED (ESTIMATED 20' EPOXY CRACK INJECTION) IF FOUND. CONCRETE SEALER SHALL BE APPLIED TO CONCRETE REPAIR AREAS.



SECTION THRU ABUTMENT



PLAN



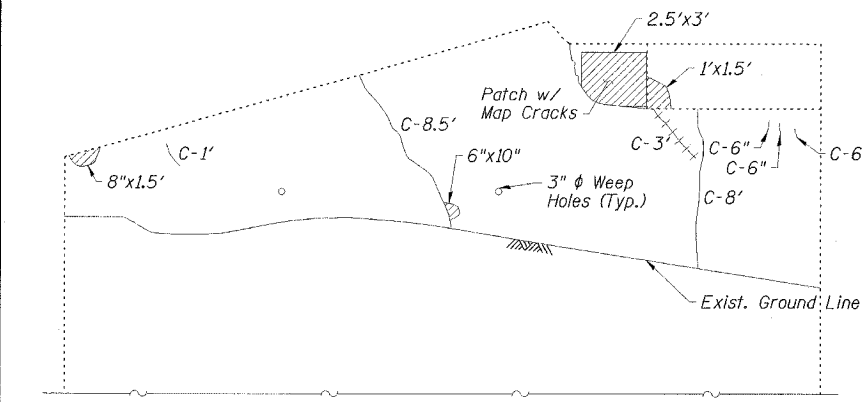
SOUTH ABUTMENT
BILL OF MATERIAL

Bar	No.	Size	Length	Shape
h(E)	4	#5	22'-0"	
v(E)	24	#4	2'-3"	□
Concrete Sealer			Sq. Ft.	56
Epoxy Crack Injection			Foot	98
Structural Repair of Concrete (Depth Equal to or Less Than 5")			Sq. Ft.	28
Concrete Removal			Cu. Yd.	1.1
Concrete Structures			Cu. Yd.	1.1
Reinforcement Bars, Epoxy Coated			Pound	130
Asbestos Bearing Pad Removal			Each	22
Bar Splicers			Each	2

REPAIR LEGEND

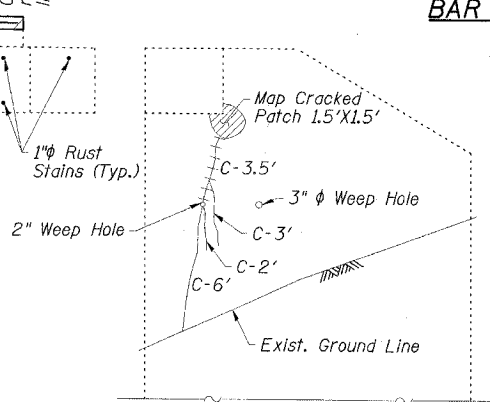
Inspection Date: 12/10/07

- C-6' Crack to be epoxy injected
- Delaminated or spalled area - use Structural Repair of Concrete
- Rust spot



SOUTHEAST WING
ELEVATION

SOUTH
ELEVATION



SOUTHWEST WING
ELEVATION

NOTE: ABUTMENT CRACK REPAIR LENGTHS AND STRUCTURAL REPAIR OF CONCRETE AREAS ARE ESTIMATED FROM 12-10-07 SURVEY WORK. ACTUAL LOCATIONS AND QUANTITIES OF REPAIRS SHALL BE SHOWN BY THE ENGINEER ON THE AS-BUILT PLANS FOR THIS SECTION.

ESCA
CONSULTANTS, INC.

DESIGNED BY:	JMS	02/08
DRAWN BY:	KAH/HAS	02/08
CHECKED BY:	ELH	02/08
APPROVED BY:	RDP	02/08

SOUTH ABUTMENT
IL 34 OVER
MIDDLE FORK SALINE RIVER
FAP ROUTE 869 - SECTION 105BR-2
SALINE COUNTY
STATION 1561+70.00
STRUCTURE NO. 083-0038