

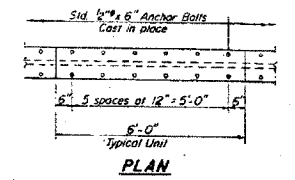
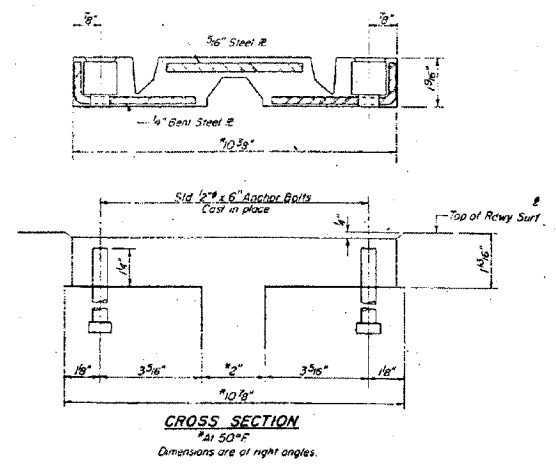


| | | | | |
|---------------------|----------|------------------|--------------|-----------|
| CONTRACT NO. 78031 | | | | |
| FAP RTE | SECTION | COUNTY | TOTAL SHEETS | SHEET NO. |
| 869 | 105BR-2 | SALINE | 118 | 75 |
| STA. | | TO STA. | | |
| FED. ROAD DIST. NO. | ILLINOIS | FED. AID PROJECT | | |

STATE OF ILLINOIS
DEPARTMENT OF TRANSPORTATION

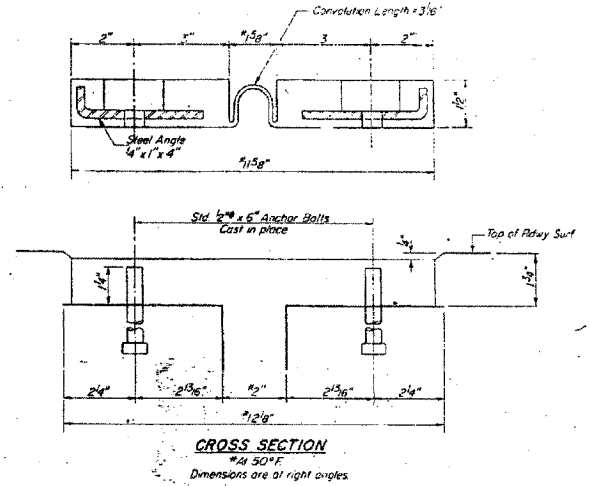
| | | |
|-------|-----|----------|
| DATE | BY | REVISION |
| 02/08 | JPC | 1.0 |
| 02/08 | MTD | 2.0 |
| 04/08 | RDP | 3.0 |

SHEET NO. 22
17 SHEETS



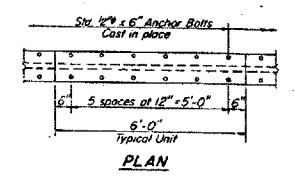
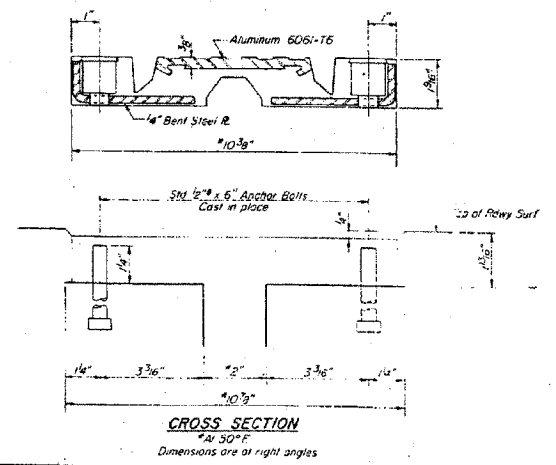
Note: Anchor bolts require a clipped washer, lockwasher and hex nut.

TRANSFLEX MODEL 200A
(Structural Rubber Products Co.)



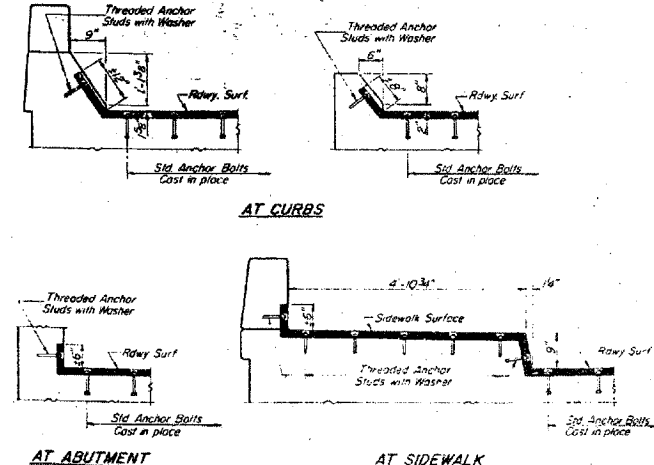
Note: Anchor bolts require a flat washer and locknut.

FEL-SPAN MODEL T-30
(Fel-Pro Building Products Inc.)



Note: Anchor bolts require a clipped washer, lockwasher and hex nut.

WABOFLEX MODEL SR 2



NOTE: Joint openings shall be adjusted in accordance with Article 503 of I.C.C. of the Sid Spec's when the deck is poured at an ambient temperature other than 50°F.

NEOPRENE EXPANSION JOINTS (2")
FOR EXPANSION LENGTH OF DECK = 0 TO 150 FT.

SUBMIT THE SECTIONS OF THE
SALINE COUNTY
STATUTE TO

| | |
|--------------------------------|---------------------------------|
| DESIGNED BY: <i>DAJ</i> | EXAMINED BY: <i>[Signature]</i> |
| CHECKED BY: <i>[Signature]</i> | PASSED BY: <i>[Signature]</i> |
| DRAWN BY: <i>EM</i> | APPROVED BY: <i>[Signature]</i> |
| CHECKED BY: <i>[Signature]</i> | DATE: 04/08 |

ESCA
CONSULTANTS, INC.

| | | |
|--------------|-----|-------|
| DESIGNED BY: | DAJ | 02/08 |
| DRAWN BY: | JPC | 02/08 |
| CHECKED BY: | MTD | 02/08 |
| APPROVED BY: | RDP | 04/08 |

EXISTING STRUCTURE PLANS
FAP RTE 869 (IL 34)
SECTION 105BR-2
SALINE COUNTY

FOR INFORMATION ONLY