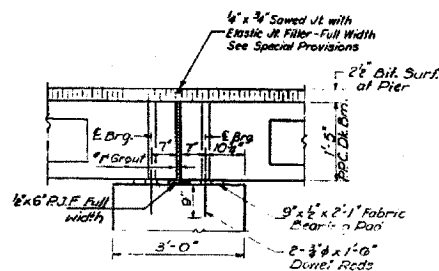


STATE OF ILLINOIS
DEPARTMENT OF TRANSPORTATION

*105(B-DR, B-DR1, B-DR2, B-DR3, B-DR4)

PROJECT NO.	SECTION	COUNTY	TOTAL SHEETS	SHEET NO.
163	SALINE	68	37	7

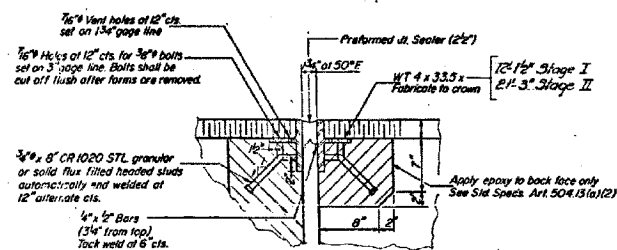


SEC. THRU PIER

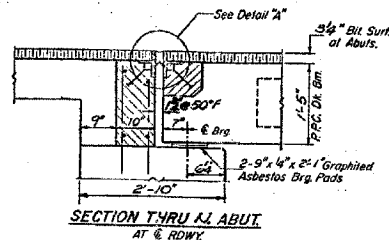
*1" Joint shall be packed with a very dry mix of 2:1 sand and P.C. mortar. This dimension may vary plus or minus to accommodate tolerance in beam lengths.

NOTE:

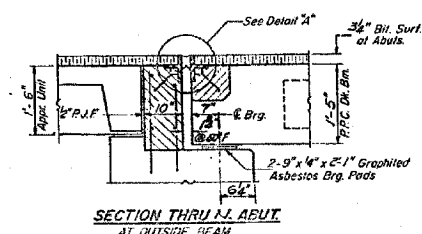
Hatched areas to be poured after beams have been erected and joints grouted. Ends of beams shall be aligned at the expansion joints. Any knee variation in the beam lengths shall be placed at the fixed joint.



DETAIL "A"

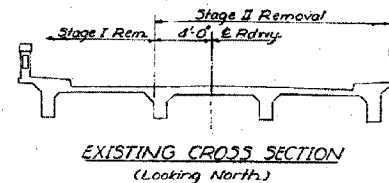


SECTION THRU I.I. ABUT.
AT E. RDWY.

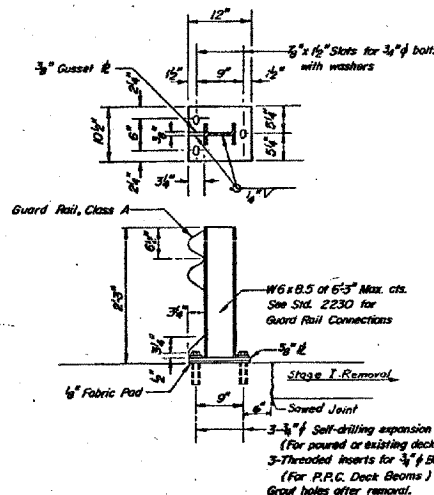


SECTION THRU I.I. ABUT.
AT OUTSIDE BEAM

Note: Class I Concrete & Reinforcement Bar quantities are billed with the abutment.



EXISTING CROSS SECTION
(Looking North.)

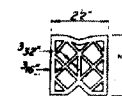


TEMPORARY GUARD RAIL DETAIL
See Special Provisions

5-10-74

DESIGNED	SEP 14 1971	EXAMINED	
CHECKED		PASSED	
DRAWN		APPROVED	
CHECKED		DIRECTOR OF HIGHWAYS	

SR-D (3-15-71)



PREFORMED JOINT SEALER (2'x2')

SUPERSTRUCTURE DETAILS
S.B.I.R.T. 143 SEC. 105B-DR-2
SALINE COUNTY
STA. 1574+00