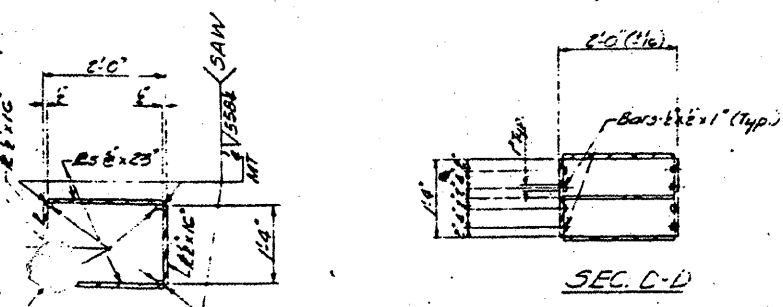
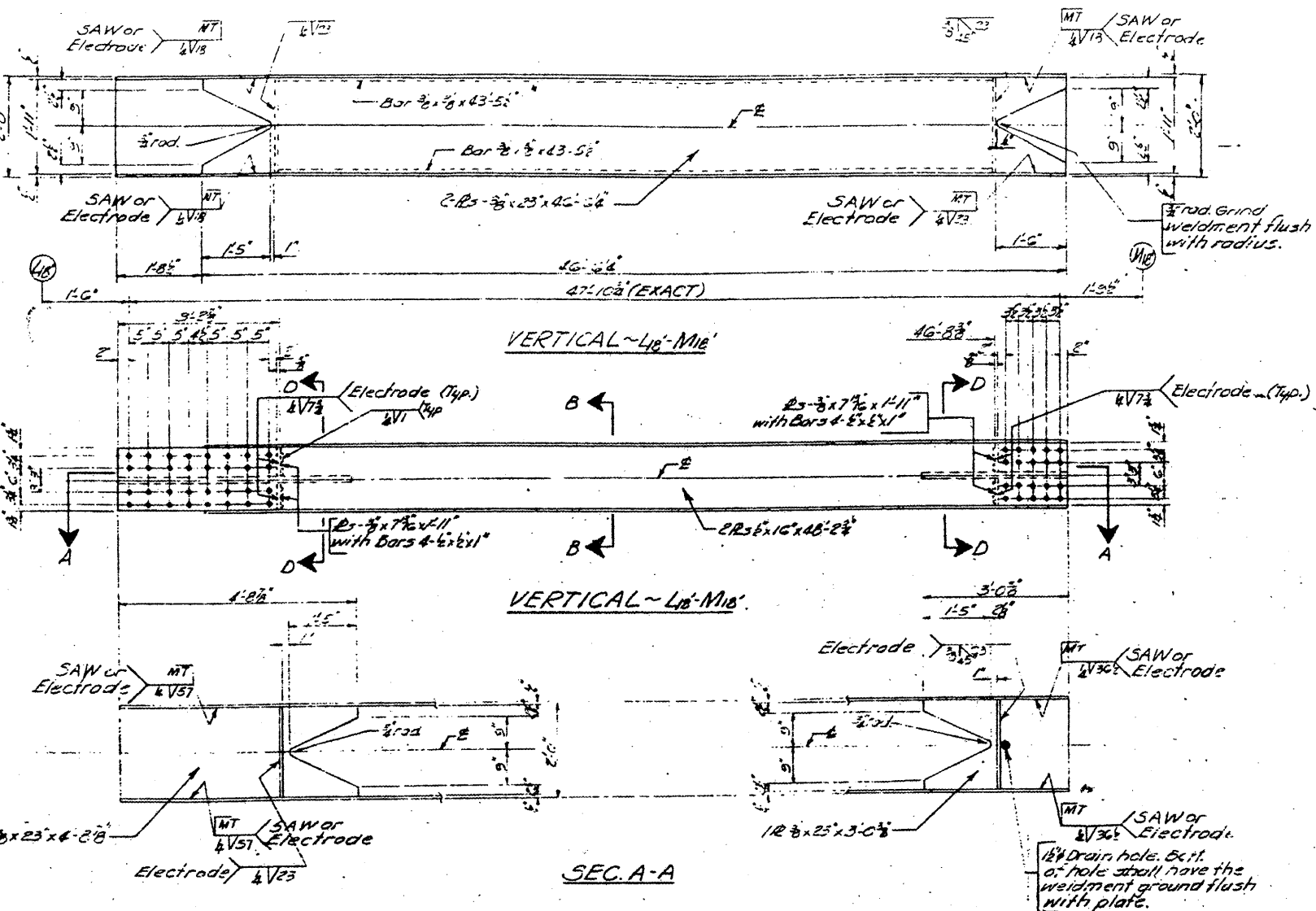
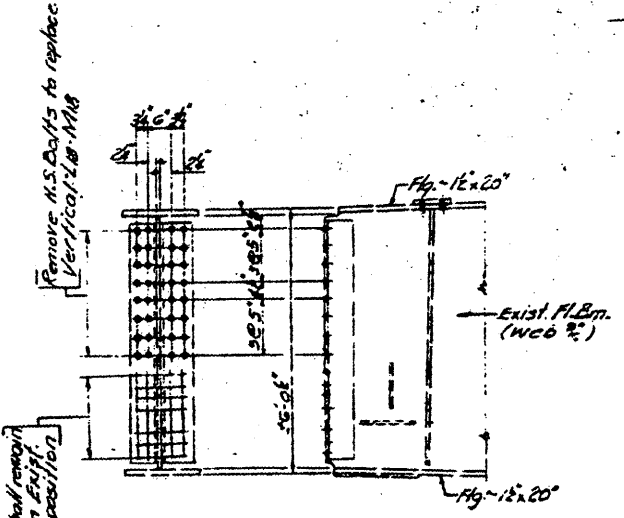
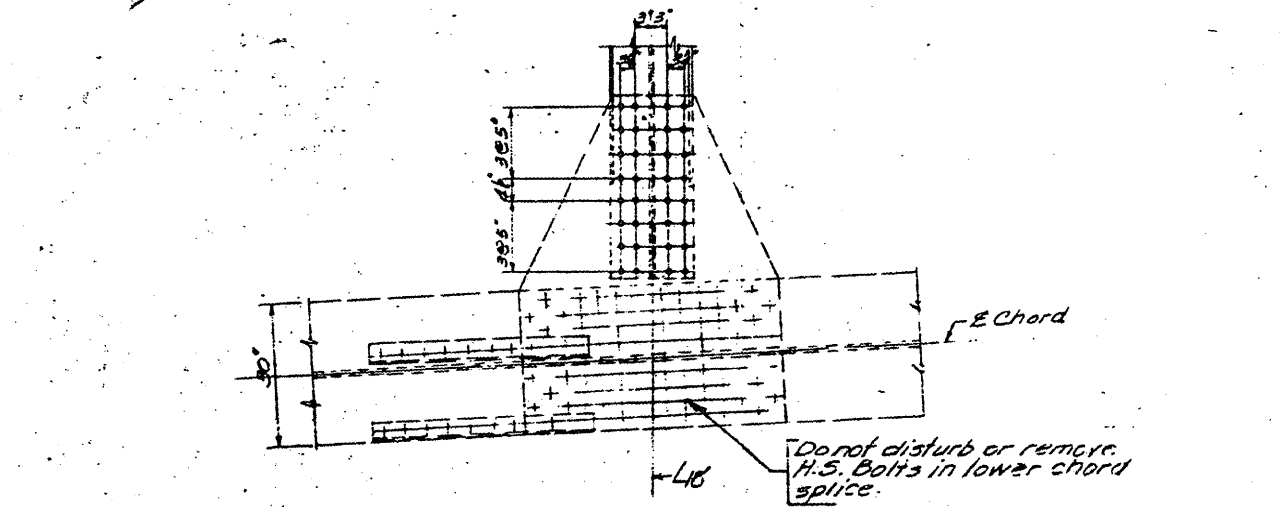
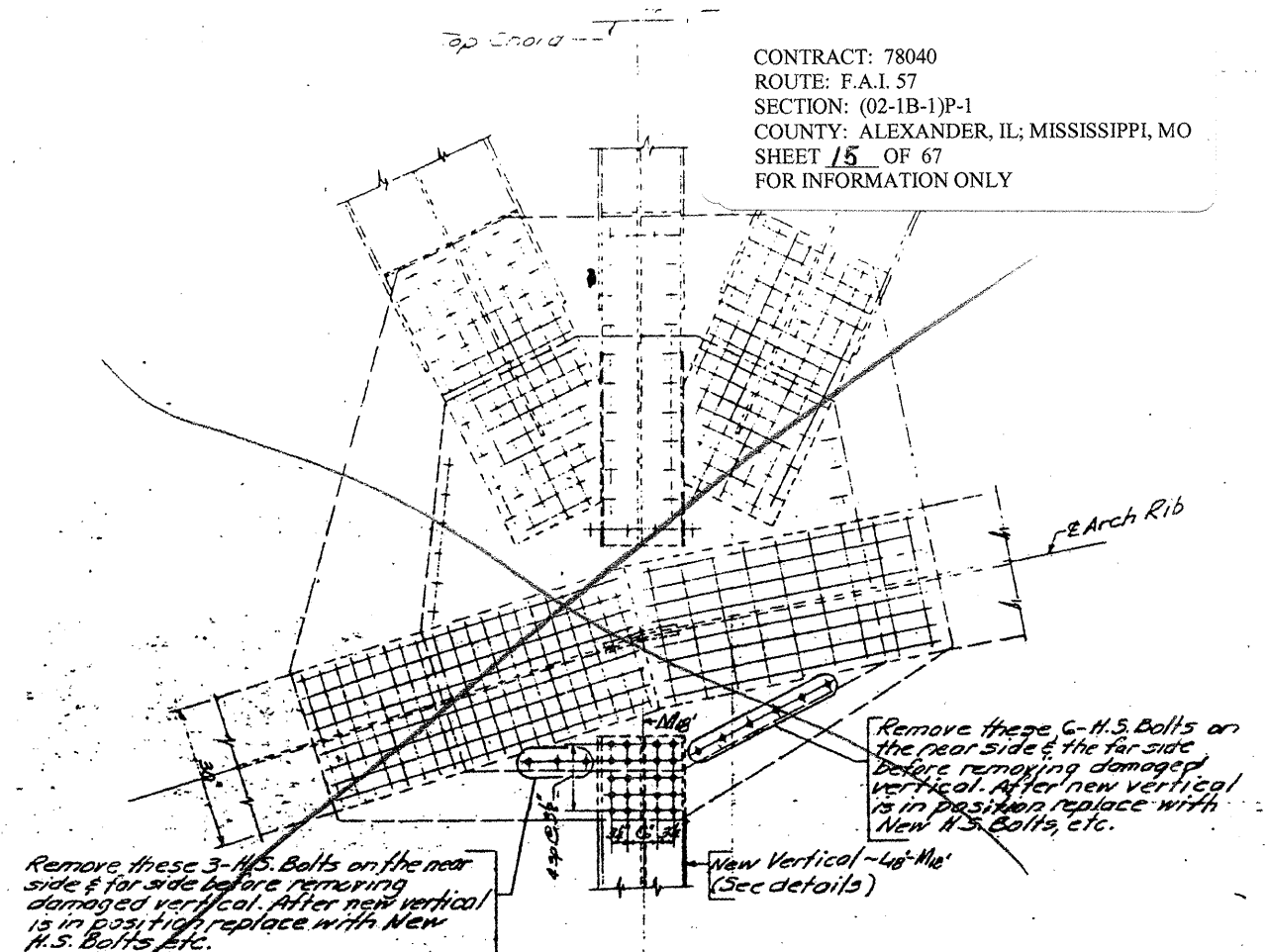


STATE OF ILLINOIS
DEPARTMENT OF TRANSPORTATION

CONTRACT: 78040
ROUTE: F.A.I. 57
SECTION: (02-1B-1)P-1
COUNTY: ALEXANDER, IL; MISSISSIPPI, MO
SHEET 15 OF 67
FOR INFORMATION ONLY



- NOTES**
1. All connection holes in vertical L6-M16 shall be subpunched or subdrilled 1/8" and reamed in the field to the same dia. as existing holes in gussets (1/8"). Use New 1" H.S. Bolts in connection.
 2. Electrodes may be E 7028 or E 7018.
 3. Member must be square at connections.
 4. Dimensions & Details of L6-M16 are from original contract fabrication plans.



BILL OF MATERIAL

Item	Unit	Total
Reinforcing Structural Steel	Lbs.	5,080
Erecting Structural Steel	Lbs.	6,080

SIGNED ENR
CHECKED A.P.W.
DRAWN ENR
CHECKED A.P.W.

Dec 17 1984
EXAMINED O.J. Rohrer
PASSED
APPROVED

BRIDGE NO. 1
STRUCTURE NO. 002-0022
FOR INFORMATION ONLY

L6-M16 MEMBER & DETAILS
F.A.I.-57 OVER MISSISSIPPI RIVER
F.A.I. RT. 57 SEC. 02-1B-1-I-DL-1
ALEXANDER COUNTY