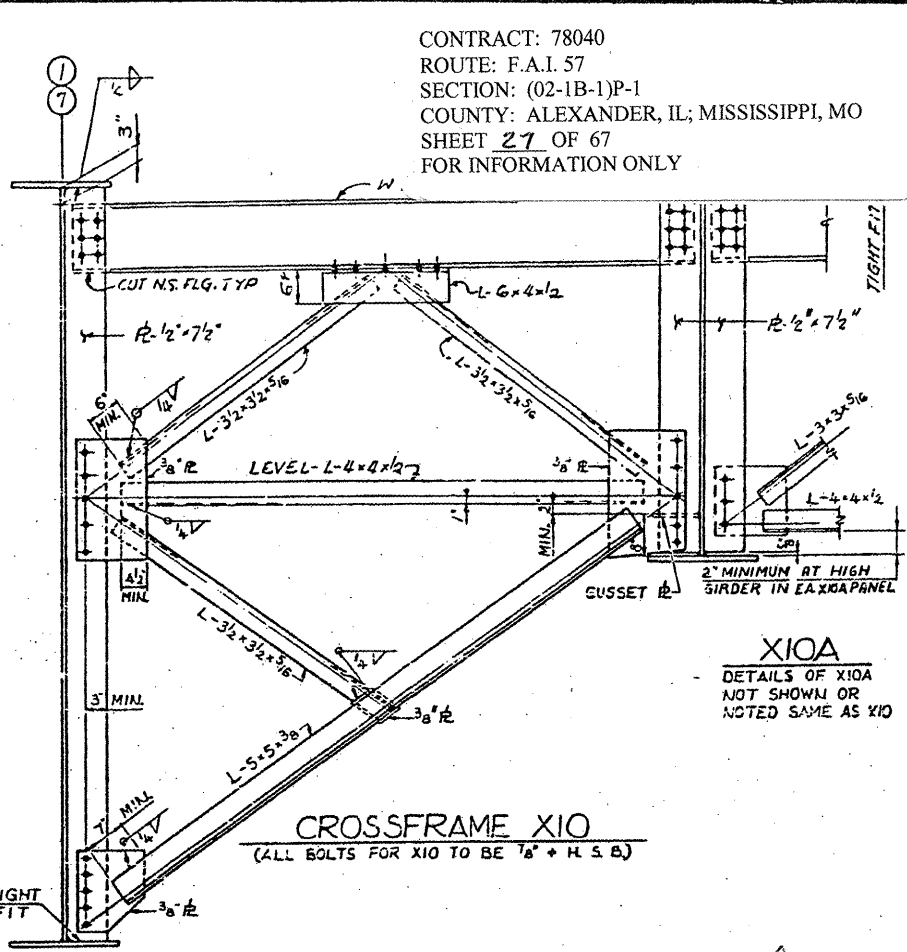
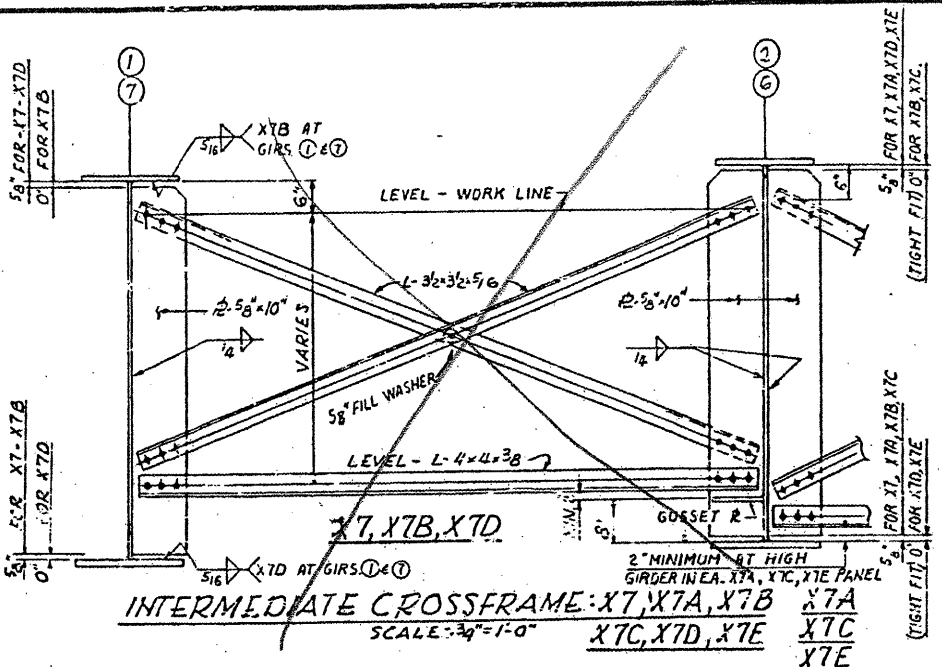
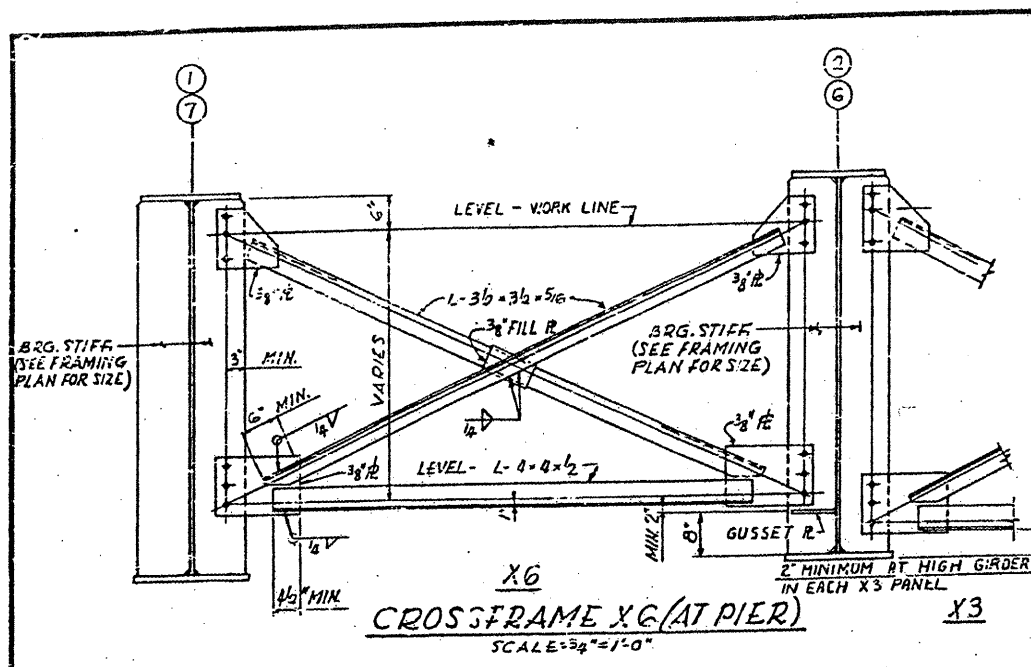
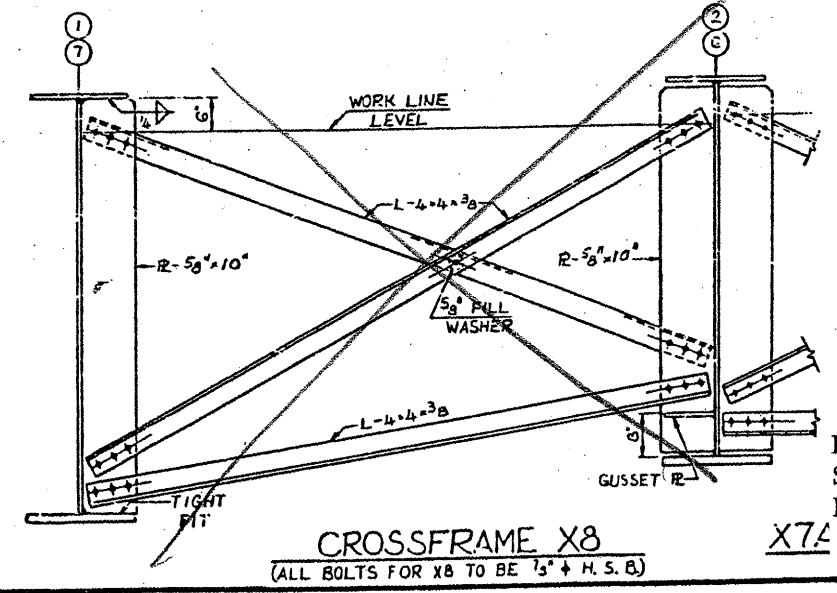
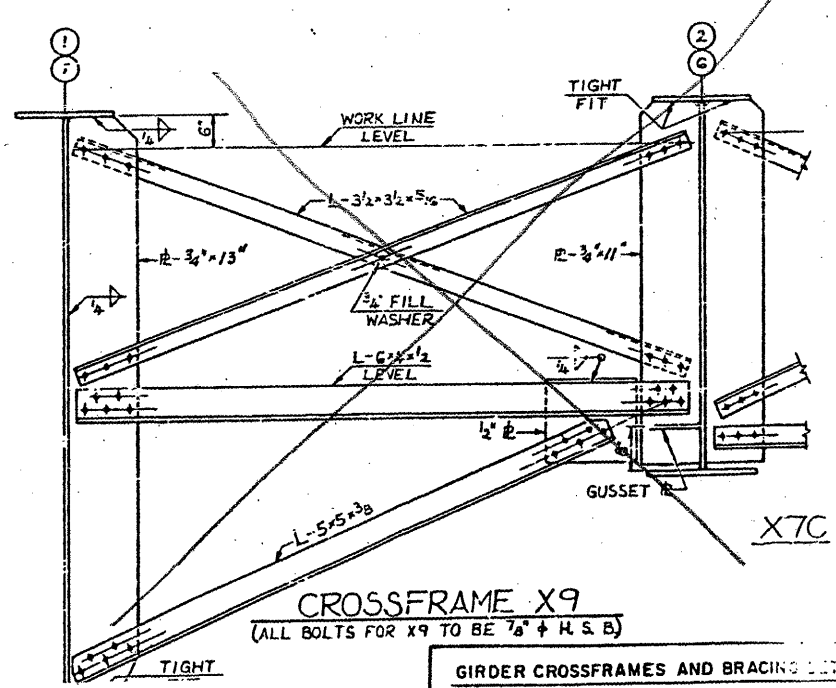
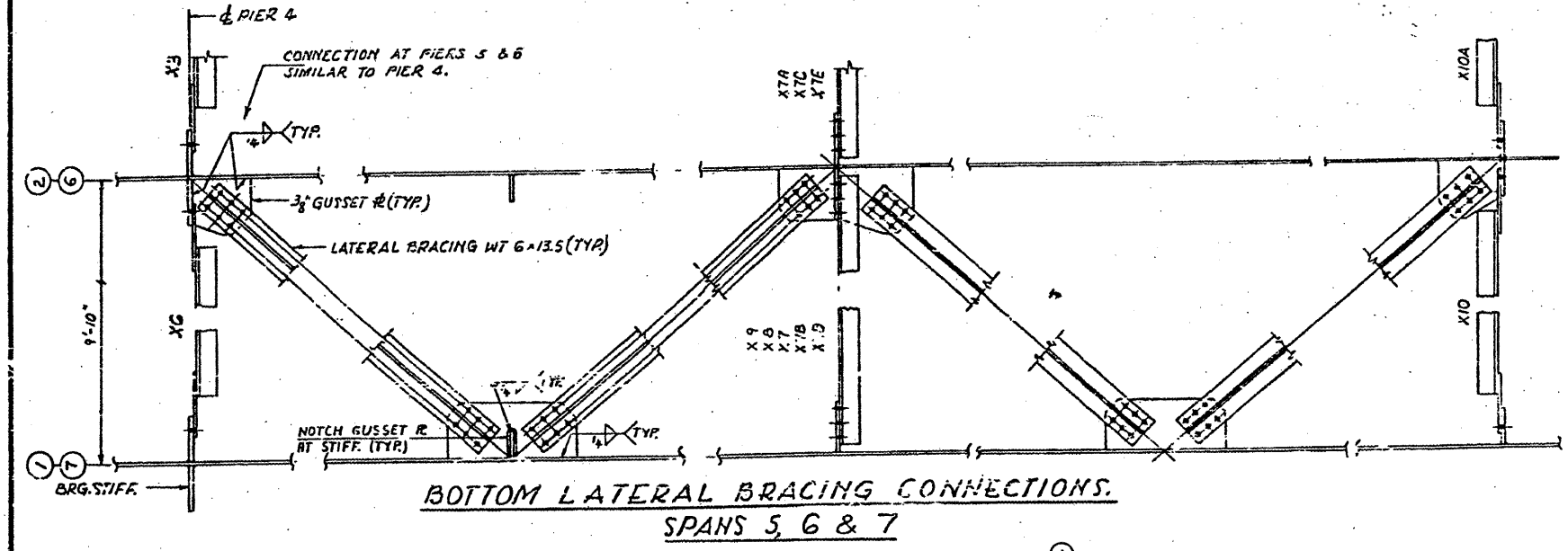


CONTRACT: 78040
 ROUTE: F.A.I. 57
 SECTION: (02-1B-1)P-1
 COUNTY: ALEXANDER, IL; MISSISSIPPI, MO
 SHEET 27 OF 67
 FOR INFORMATION ONLY



X10A
 DETAILS OF X10A NOT SHOWN OR NOTED SAME AS X10



NOTES:
 ALL MATERIAL ASTM A36 UNLESS NOTED.
 ALL FASTENERS SHALL BE 3/4" + ASTM A325 HIGH STRENGTH BOLTS UNLESS NOTED.
 FOR DETAIL OF STIFFENERS, SEE SH. 44

BRIDGE NO. 1
 STRUCTURE NO. 002-0022
 FOR INFORMATION ONLY

GIRDER CROSSFRAMES AND BRACING DETAILS
 F.A.I. RTE. 57 OVER THE MISSISSIPPI RIVER
 PROJECT 1-57-9 (510)
 SECTION (02-1B-1)D
 ALEXANDER COUNTY, ILLINOIS
 MISSISSIPPI COUNTY, MISSOURI
 STA. 1141 + 84.75 TO STA. 1182 + 75.25