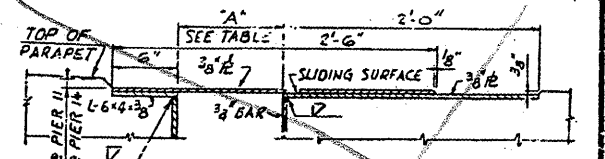


CONTRACT: 78040  
 ROUTE: F.A.I. 57  
 SECTION: (02-1B-1)P-1  
 COUNTY: ALEXANDER, IL, MISSISSIPPI, MO  
 SHEET 37 OF 67  
 FOR INFORMATION ONLY

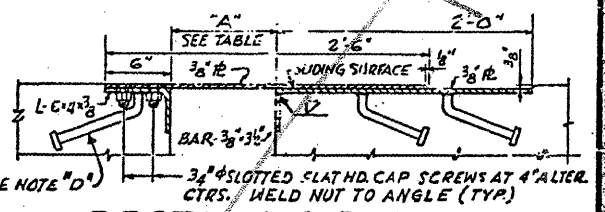
TABLE OF "A" AND "B" DIMENSIONS

TEMP (°F)	BEFORE DECK CONCRETE IN SPANS 12, 13 & 14 IS POURED		AFTER DECK CONCRETE IN SPANS 12, 13 & 14 IS POURED	
	PIER II	PIER 14	PIER II	PIER 14
130	6' 5 1/2"	10' 1 1/2"	6' 1 1/2"	10' 1 1/2"
110	8' 1/4"	16' 3/4"	8' 5/16"	16' 3/4"
90	10' 3/16"	18' 1/2"	10' 3/16"	18' 1/2"
TO 12' 1/2"	12' 1/2"	22' 1/2"	12' 1/2"	22' 1/2"
50	14' "	24' "	11' 1/2"	13' 1/2"
30	15' 5/8"	25' 5/8"	13' 1/16"	15' 1/16"
10	17' 1/2"	27' 1/2"	15' 1/16"	17' 1/16"
-10	19' 3/8"	29' 3/8"	17' 1/16"	19' 1/16"
-30	21' 1/8"	31' 1/8"	19' 1/16"	21' 1/16"

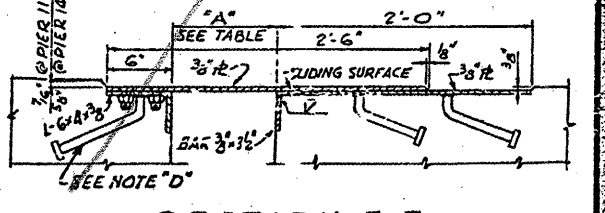
\* TEMPERATURE AT TIME OF ADJUSTMENT OF EXPANSION GUARD



SECTION C-C



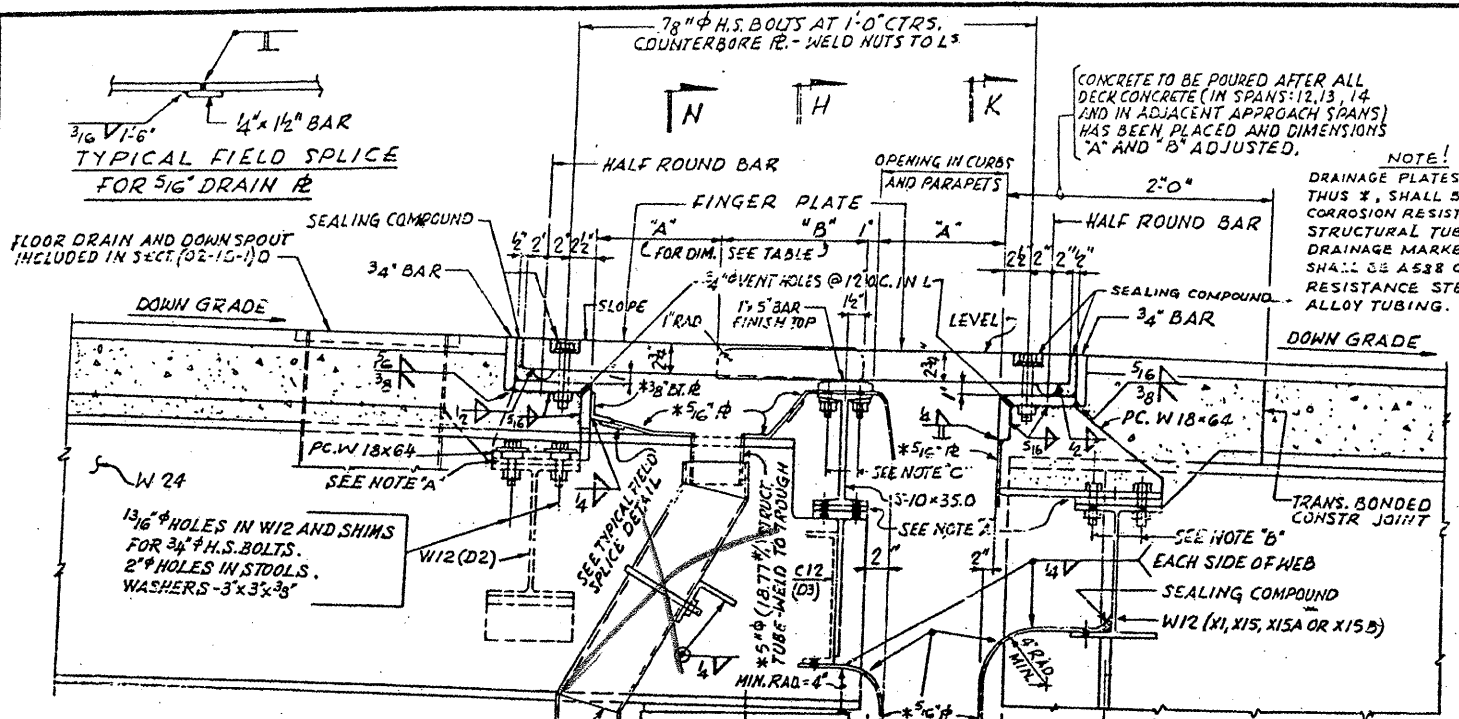
SECTION D-D



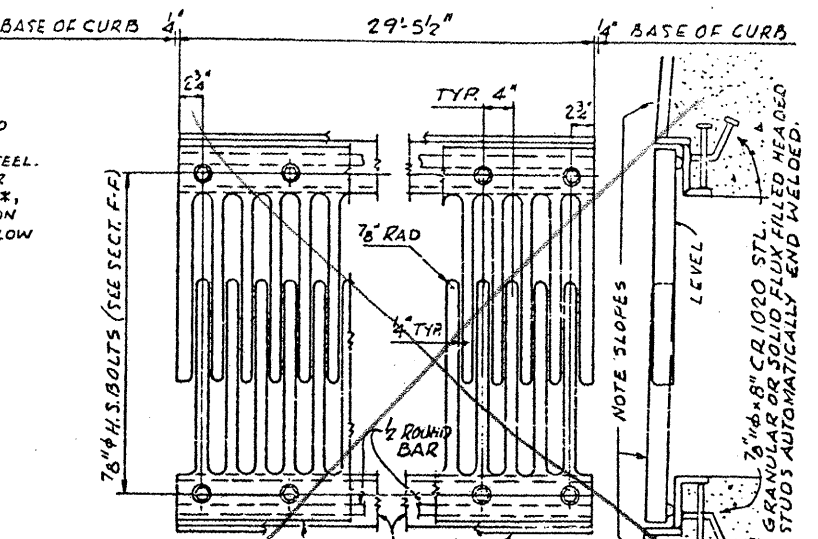
SECTION E-E

BRIDGE NO 1  
 STRUCTURE NO. 002-0022  
 FOR INFORMATION ONLY

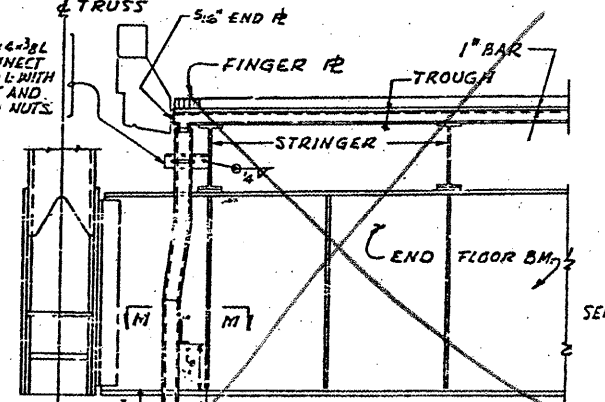
EXPANSION GUARD - PIER 14  
 F.A.I. RTE. 57 OVER THE M. PI RIVER  
 PROJECT 1-57-5  
 SECTION 02-1B-1P  
 ALEXANDER COUNTY, ILLINOIS  
 MISSISSIPPI COUNTY, MISSOURI  
 STA. 1141 + 84.75 TO STA. 1182 + 75.25



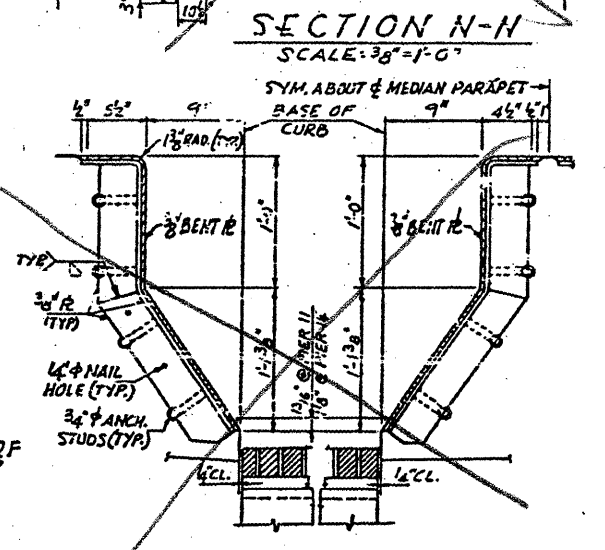
SECTION F-F



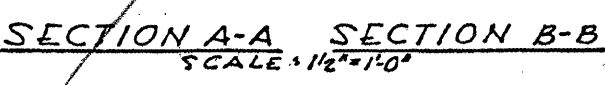
FLAME CUT PLATE



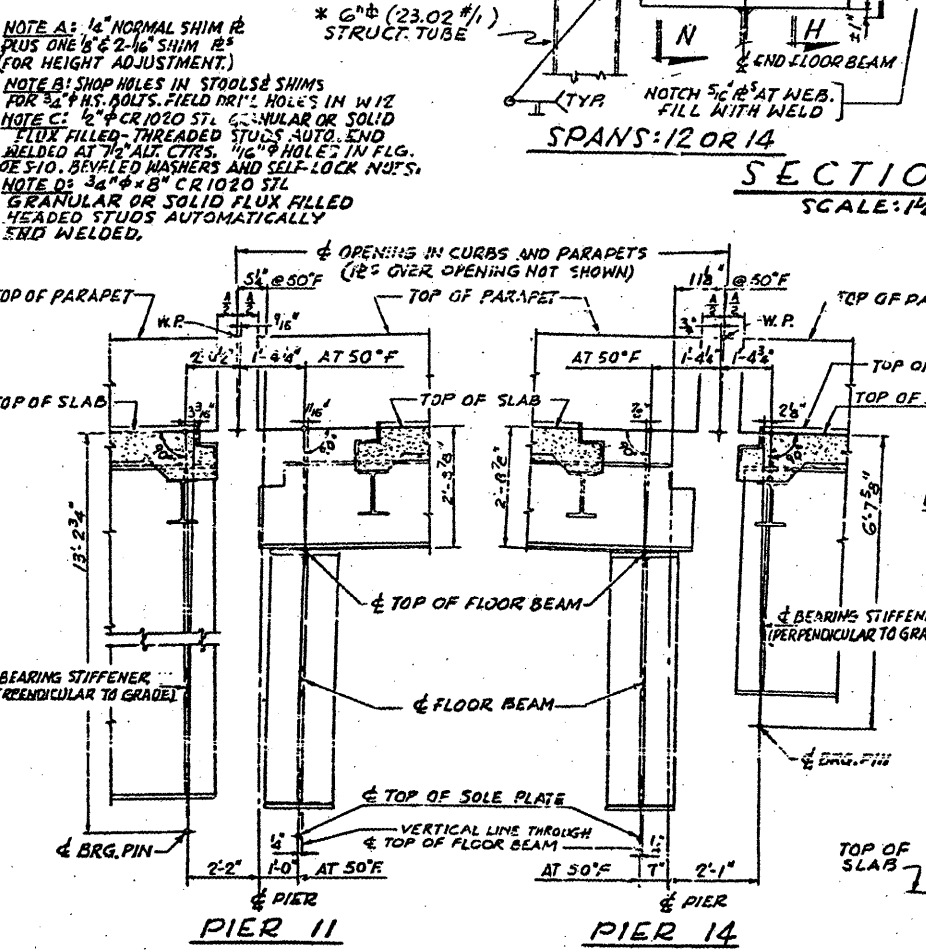
SECTION M-M



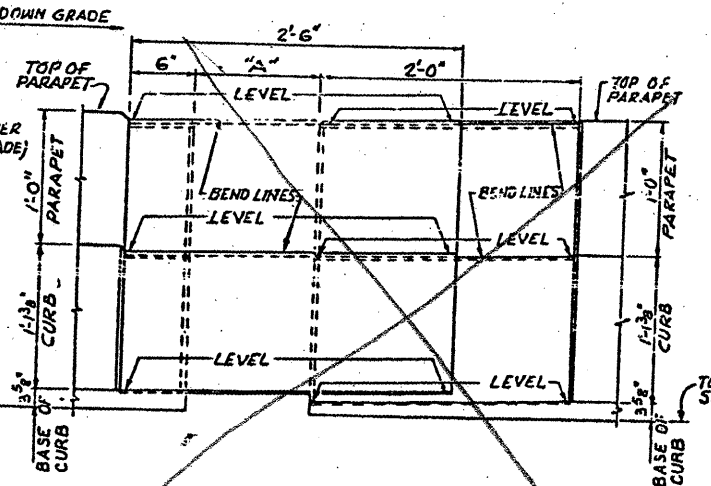
SECTION N-N



SECTION A-A SECTION B-B



WORK LINES



ELEVATION OF CURB AND PARAPET

NOTE A: 1/4" NORMAL SHIM 1/2" PLUS ONE 1/8" & 2-1/16" SHIM 1/2" (FOR HEIGHT ADJUSTMENT.)  
 NOTE B: SHOP HOLES IN STOODLS & SHIMS FOR 3/4" H.S. BOLTS. FIELD DRILL HOLES IN W12 FLUX FILLED, THREADED STUDS AUTO. END WELDED AT 7/16" ALT. CTRS. 1/16" HOLE IN FLG. OF S10. BEVALED WASHERS AND SELF-LOCK NUTS.  
 NOTE C: 1/2" CR 1020 STL. GRANULAR OR SOLID FLUX FILLED, THREADED STUDS AUTO. END WELDED AT 7/16" ALT. CTRS. 1/16" HOLE IN FLG. OF S10. BEVALED WASHERS AND SELF-LOCK NUTS.  
 NOTE D: 3/4" CR 1020 STL. GRANULAR OR SOLID FLUX FILLED HEADED STUDS AUTOMATICALLY END WELDED.

CONCRETE TO BE POURED AFTER ALL DECK CONCRETE (IN SPANS 12, 13, 14 AND IN ADJACENT APPROACH SPANS) HAS BEEN PLACED AND DIMENSIONS "A" AND "B" ADJUSTED.

NOTE! DRAINAGE PLATES MARKED THUS \* SHALL BE A588 CORROSION RESISTANCE STEEL. STRUCTURAL TUBING FOR DRAINAGE MARKED THUS \* SHALL BE A588 CORROSION RESISTANCE STEEL OR LOW ALLOY TUBING.

FIELD WELD 4x4x3/8L TO W.WEB. CONNECT DOWNSPUT TO L WITH 2x4 LI-BOLT AND SELF-LOCKING NUTS.

7/8" CR 1020 STL. GRANULAR OR SOLID FLUX FILLED HEADED STUDS AUTOMATICALLY END WELDED.

FLAME CUT PLATE MAX. LENGTH OF PLATE TO BE APPROXIMATELY 13'-0" PLATE TO BE FLATTENED

SYM. ABOUT & MEDIAN PARAPET BASE OF CURB

ALFRED BENESCH & COMPANY  
 CONSULTING ENGINEERS  
 10 S. WABASH AVE. CHICAGO, ILLINOIS