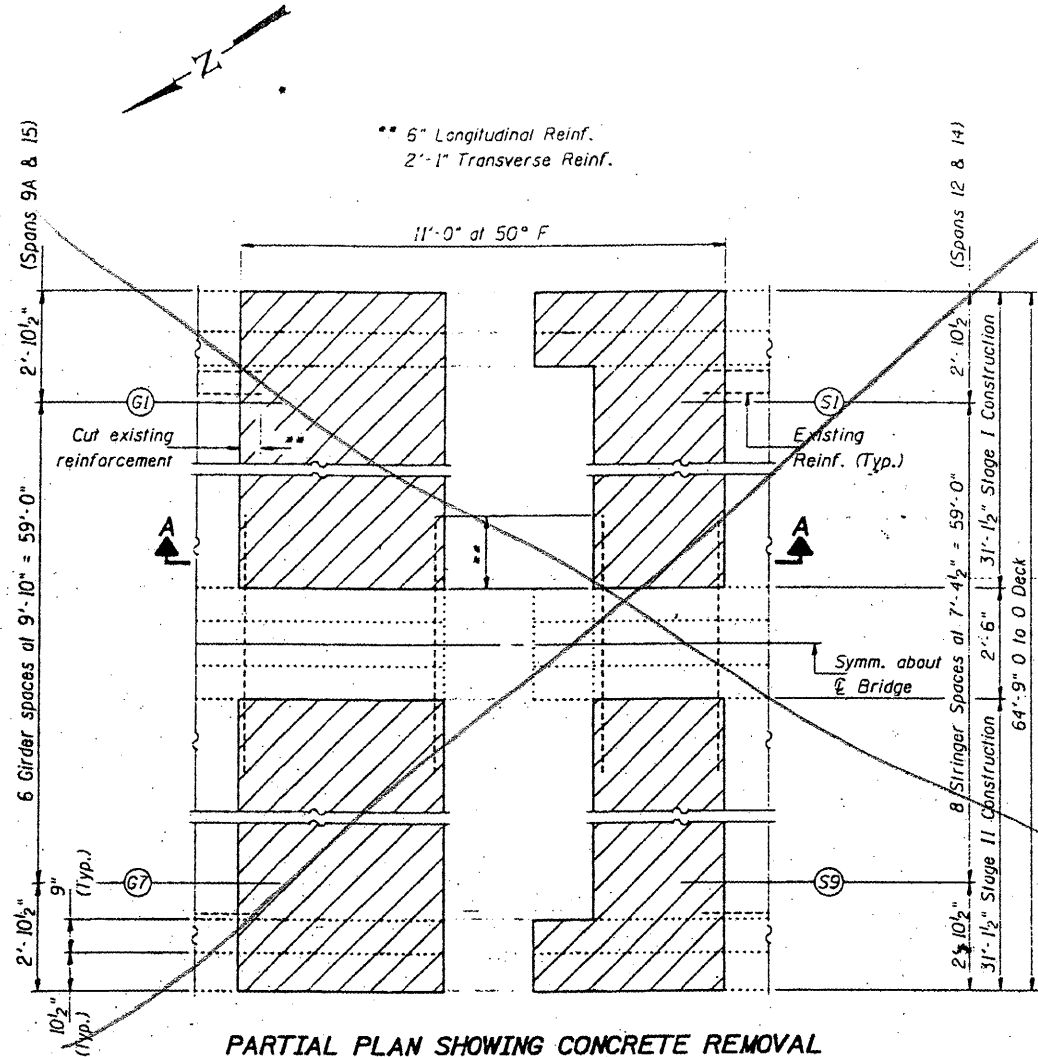


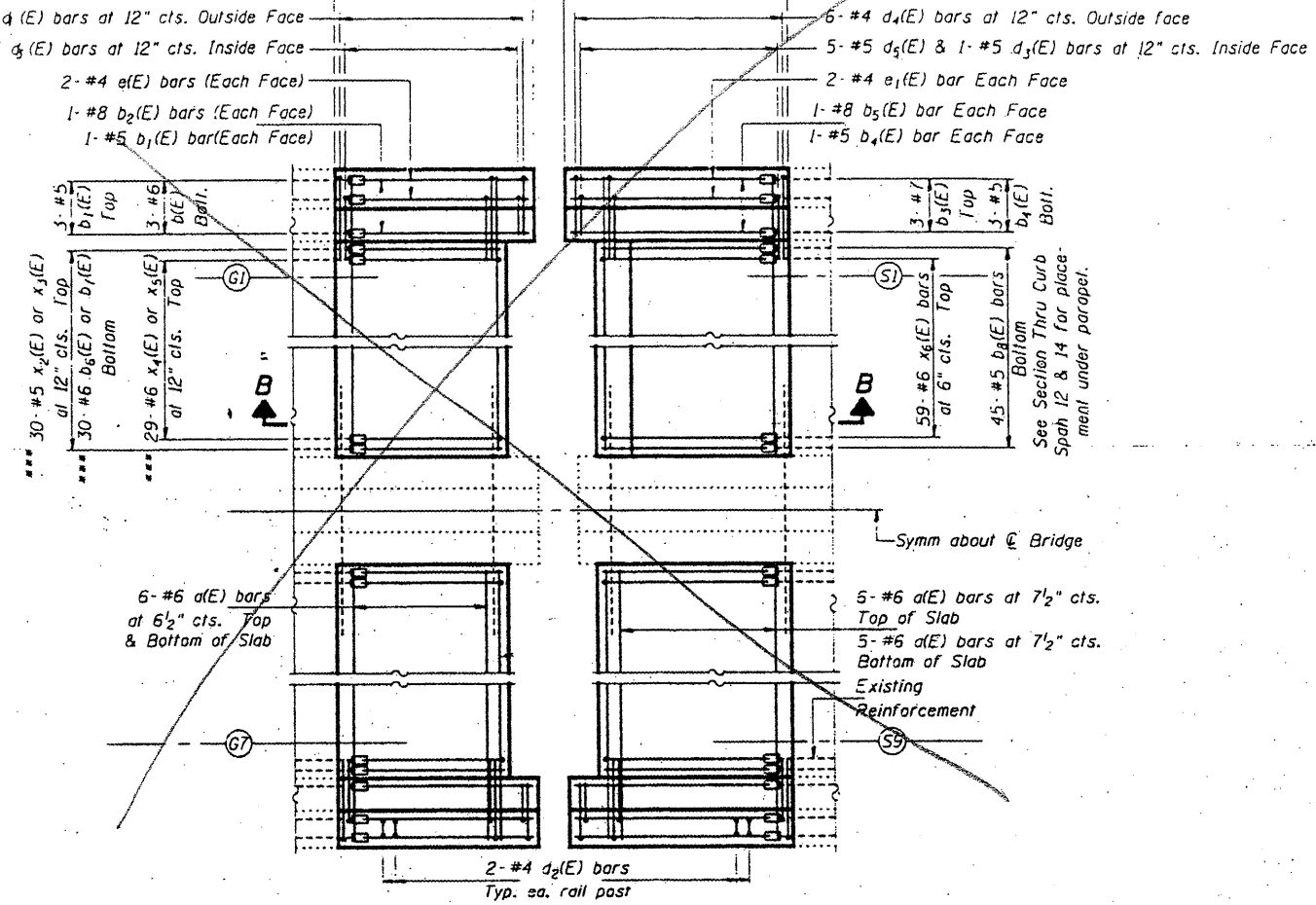
STATE OF ILLINOIS
DEPARTMENT OF TRANSPORTATION

CONTRACT: 78040
ROUTE: F.A.I. 57
SECTION: (02-1B-1)P-1
COUNTY: ALEXANDER, IL; MISSISSIPPI, MO
SHEET 58 OF 67
FOR INFORMATION ONLY



PARTIAL PLAN SHOWING CONCRETE REMOVAL
(Pier 11 Shown, Pier 14 Similar)

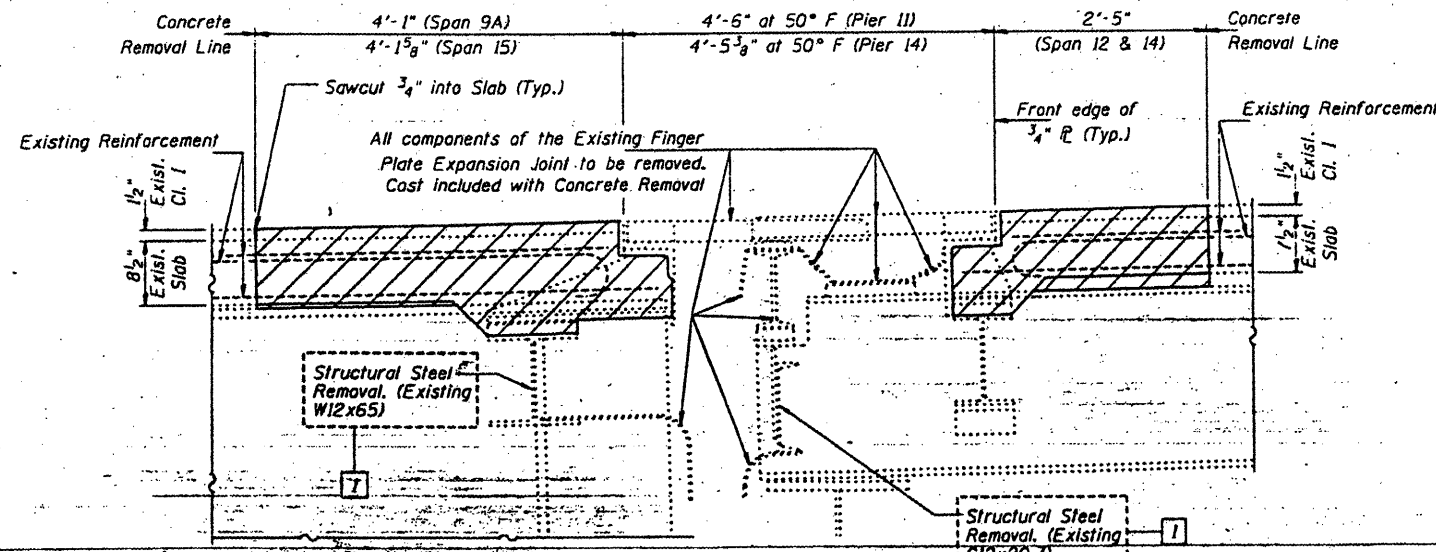
*** Span 9A: $b_6(E)$, $x_2(E)$, & $x_4(E)$
Span 15: $b_7(E)$, $x_3(E)$, & $x_5(E)$



PARTIAL PLAN SHOWING CONCRETE REPLACEMENT
(Pier 11 Shown, Pier 14 Similar)

Notes:
Hatched areas indicates "Concrete Removal".
Existing reinforcement to which new bars are to be lapped or mechanically spliced shall be cleaned, straightened, and incorporated into the new construction. Any such reinforcement bars that are damaged during concrete removal shall be replaced with an approved bar splicer or anchorage system. Cost included with Concrete Removal.
For Section B-B, Section Thru Parapets, Bar Details and Bill of Material see sheet 6 of 14.
For Rail Post Anchor Device Detail, see Sheet 4 of 14.

Notes: New transverse d(E) bars shall be lapped with existing bars.
All new longitudinal (b.e. & x) bars shall be joined to existing reinforcement with Mechanical Splicers, except for the $x_4(E)$ & $x_5(E)$ bars. Alternate $x_4(E)$ & $x_5(E)$ bars with $x_2(E)$ & $x_3(E)$ bars, respectively.



SECTION A-A

BRIDGE NO. 1
STRUCTURE NO. 002-0022
FOR INFORMATION ONLY

EXPANSION JOINT DETAILS-- PIER 11 & 14
F.A.I. 57 OVER MISSISSIPPI RIVER
ALEXANDER COUNTY
S.N. 002-0022

DESIGNED	P.S.J.	FEBRUARY 4, 2002
CHECKED	A.T.H.	EXAMINED <i>John A. Morris</i>
DRAWN	John F. Schneller Jr.	ENGINEER OF STRUCTURAL SERVICES
CHECKED	A.T.H. P.S.J.	PASSED
		ENGINEER OF BRIDGES AND STRUCTURES