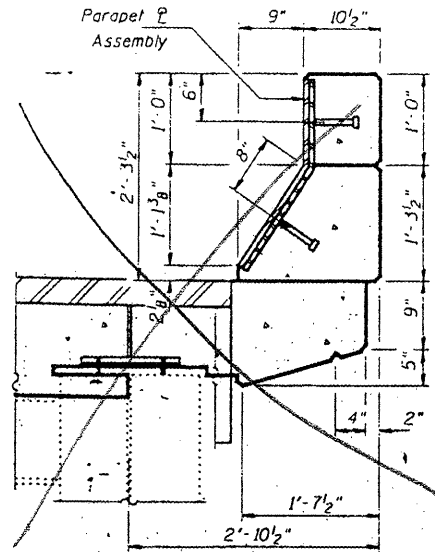


STATE OF ILLINOIS
DEPARTMENT OF TRANSPORTATION

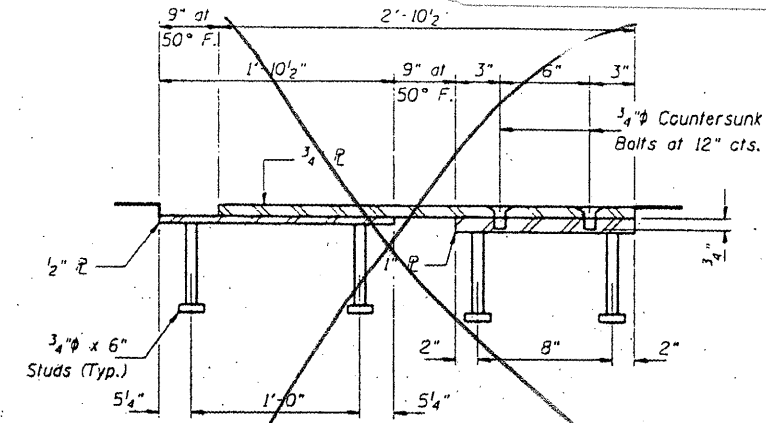
CONTRACT: 78040
ROUTE: F.A.I. 57
SECTION: (02-1B-1)P-1
COUNTY: ALEXANDER, IL; MISSISSIPPI, MO
SHEET 65 OF 67
FOR INFORMATION ONLY

TROUGH DIMENSIONS

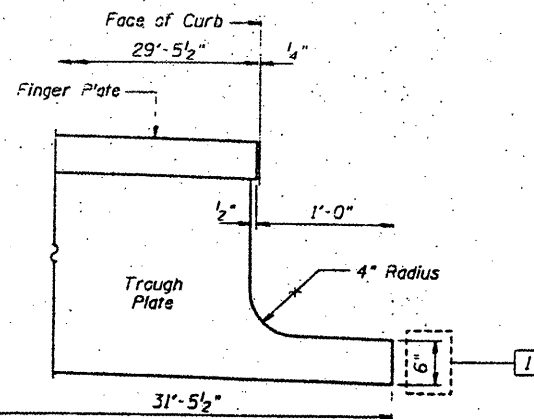
SLCPE/ DIMENSION	Pier 11	Pier 14
'V'	1 1/4" / ft.	7/8" / ft.
'W'	1" / ft.	5/8" / ft.
'X'	3'-6 3/4"	4'-10 1/2"
Approach Span	G1	3'-0 1/2"
	G2	4'-2 5/8"
	G3	5'-4 1/5"
	G4	5'-10 5/8"
	G5	4'-11 1/4"
	G6	3'-11 5/8"
	G7	2'-11 5/8"
Truss Span	S1	1'-0 1/4"
	S2	1'-10 5/8"
	S3	2'-8 5/8"
	S4	3'-7 1/2"
	S5	3'-10 1/8"
	S6	3'-1 3/8"
	S7	2'-4 3/8"
	S8	1'-7 7/8"
	S9	11 3/8"



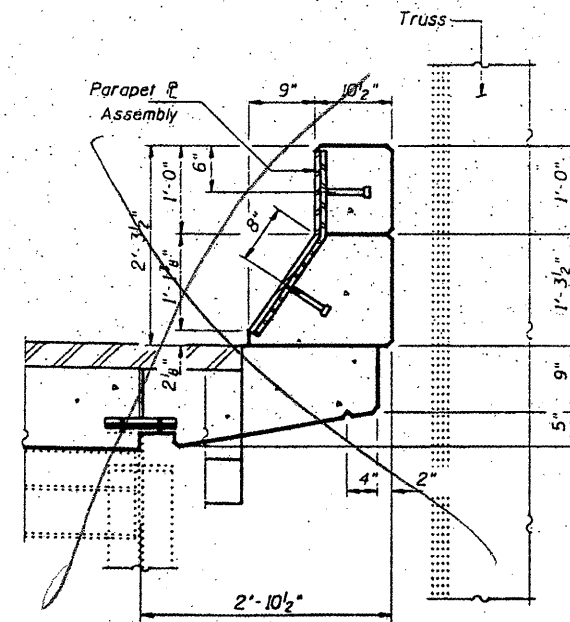
SECTION THRU CURB - SPANS 9A & 15



PARAPET PLATE ASSEMBLY DETAIL



TYPICAL END OF TROUGH PLATE DETAIL



SECTION THRU CURB - SPANS 12 & 14

DESIGNED P.S.J.
CHECKED A.T.H.
DRAWN John F. Schneller, Jr.
CHECKED A.T.H. P.S.J.

FEBRUARY 4, 2002
EXAMINED John A. Morris
ENGINEER OF STRUCTURAL SERVICES
PASSED
ENGINEER OF BRIDGES AND STRUCTURES

BRIDGE NO. 1
STRUCTURE NO. 002-0022
FOR INFORMATION ONLY

EXPANSION JOINT DETAILS - PIER 11 & 14
F.A.I. 57 OVER MISSISSIPPI RIVER
ALEXANDER COUNTY
S.N. 002-0022