

STORM SEWER STRUCTURES & PIPES

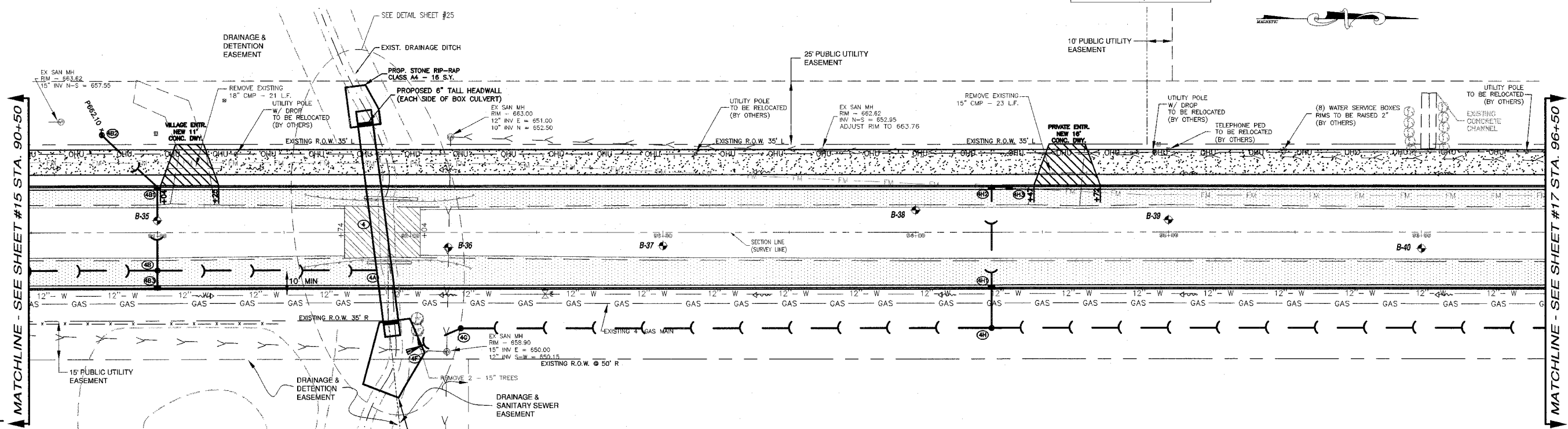
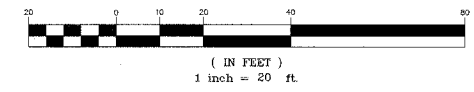
Structure Information						Out Pipe						In Pipe											
Structure ID	Location	Structure Type/Ø	Rim Elev	IDOT Type Fr	Lid	Pipe Segment	Direction	Invert	Pipe Size (in)	Added Spec	Pipe Type	Length (ft)	Slope	Direction	Invert	Pipe Size (in)	Direction	Invert	Pipe Size (in)	Direction	Invert	Pipe Size (in)	
4	STA: 91+81 - 48 L TO 91+93 - 41 R	6X6BC						654.00				78	1.11%		655.00	18							
4A	STA: 91+87 - 15 R	CUT												S	655.00	18							
4B	STA: 91+00 - 15 R	MH-4	663.35	1	CL	4B - 4A	N	655.86	18		2	86	1.00%	W	658.47	12	E	660.09	12	S	655.89	18	
4B1	STA: 91+00 - 18 L	MH-4	663.25	11		4B1 - 4B	E	658.79	12		2	32	1.00%	SW	658.81	12							
4B2	STA: 90+78 - 39 L	INL-2	662.10	37M		4B2 - 4B1	NE	659.10	12		1	29	1.00%										
4B3	STA: 91+00 - 22 R	INL-2	663.15	11		4B3 - 4B	W	660.15	12		1	6	1.00%										
4F	STA: 91+99 - 47 R	FES												NW	654.70	18							
4G	STA: 92+20 - 38 R	MH-4	660.80	1	CL	4G - 4F	SE	654.83	18		2	22	0.60%	N	654.93	18							
4H	STA: 94+30 - 38 R	MH-4	660.00	1	CL	4H - 4G	S	656.18	18		1	208	0.60%	N	656.20	12							
4H1	STA: 94+30 - 22 R	MH-4	662.65	11		4H1 - 4H	E	657.37	15		1	14	3.00%	W	658.36	15							
4H2	STA: 94+30 - 18 L	INL-3	662.75	11		4H2 - 4H1	E	659.74	15		1	38	1.00%	N	659.76	12							
4H3	STA: 94+37 - 18 L	INL-2	662.75	11		4H3 - 4H2	S	659.82	12		1	6	1.00%										

STORM STRUCTURE LEGEND

- EXMH = Existing manhole
- FES = PRC Flared End Section
- INL-2 = Inlet Type A, 2' Dia
- INL-3P = Inlet Type A, 3' Dia (Special)
- INL-3 = Inlet Type A, 3' Dia
- CB-4 = Catch Basin Type A, 4' Dia
- CB-5 = Catch Basin Type A, 5' Dia
- MH-4 = Manhole Type A, 4' Dia
- MH-5 = Manhole Type A, 5' Dia
- MH-6 = Manhole Type A, 6' Dia
- MH-7 = Manhole Type A, 7' Dia
- RES-6 = Resistor CBASIN, 6' Dia
- TEE = RCP Tee
- INL-SP = Inlet Type A (Special)
- TIE = Connected to pipe
- CUT = Connect to Box Culvert & out pipe flush
- 1 = Frame & Lid Type 1
- 37M = Grate Type 37M
- 11 = Frame & Grate Type 11
- 11V = Frame & Grate Type 11V
- CL = Cast Open Lid
- CL = Cast Closed Lid
- EX6BC = PRC Box Culvert (6' x 6' w/ End Sections (ASTM-C850))
- END = Continuation By Others

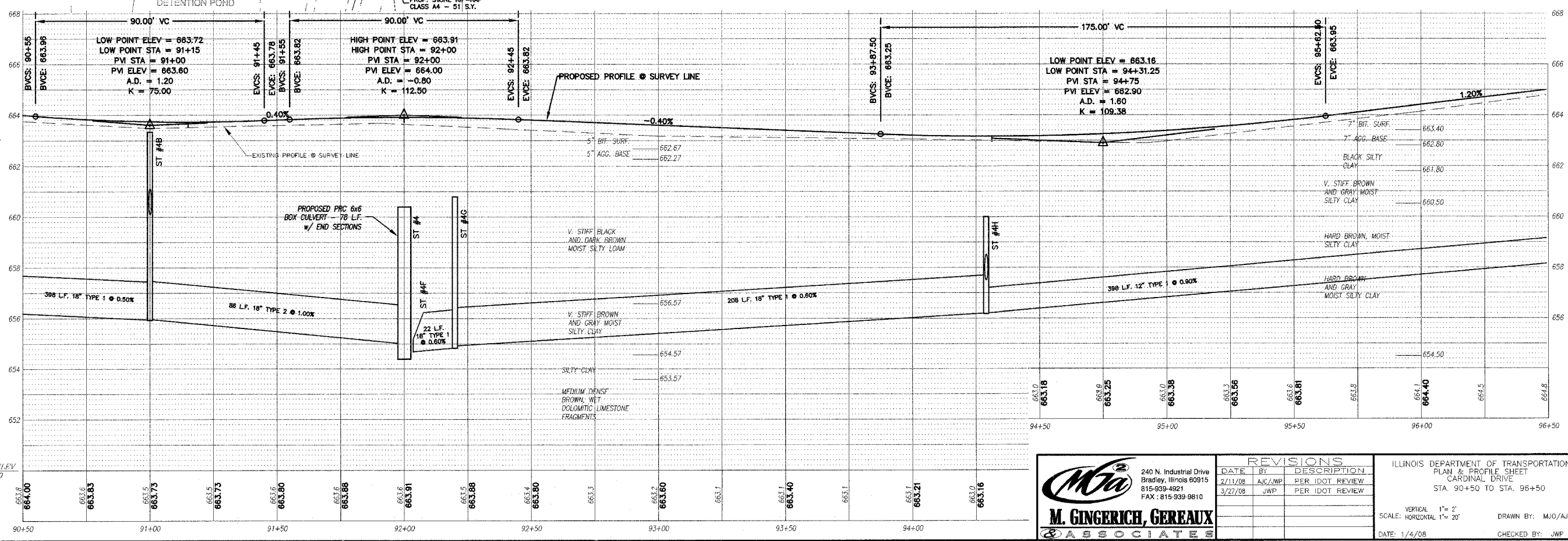
F.A.U. RTE.	SECTION	COUNTY	TOTAL SHEETS	SHEET NO.
6208	07-00093-00-RP	KANKAKEE	43	16
MG2A# M2-096		CONTRACT NO.: 87342		

GRAPHIC SCALE



LEGEND

- PAVEMENT WIDENING
- PAVEMENT REMOVAL
- BUTT JOINT
- PROPOSED STORM SEWER
- PROPOSED STORM STRUCTURE ID
- PROPOSED DRIVEWAY REPLACEMENT



240 N. Industrial Drive
Bradley, Illinois 60915
815-939-4921
FAX: 815-939-9810

M. GINGERICH, GEREAX
ASSOCIATES

REVISIONS

DATE	BY	DESCRIPTION
2/11/08	AJC/JWP	PER IDOT REVIEW
3/27/08	JWP	PER IDOT REVIEW

ILLINOIS DEPARTMENT OF TRANSPORTATION
PLAN & PROFILE SHEET
CARDINAL DRIVE
STA. 90+50 TO STA. 96+50

SCALE: HORIZONTAL 1" = 20'
VERTICAL 1" = 2'

DATE: 1/4/08
DRAWN BY: MJO/AJC
CHECKED BY: JWP