

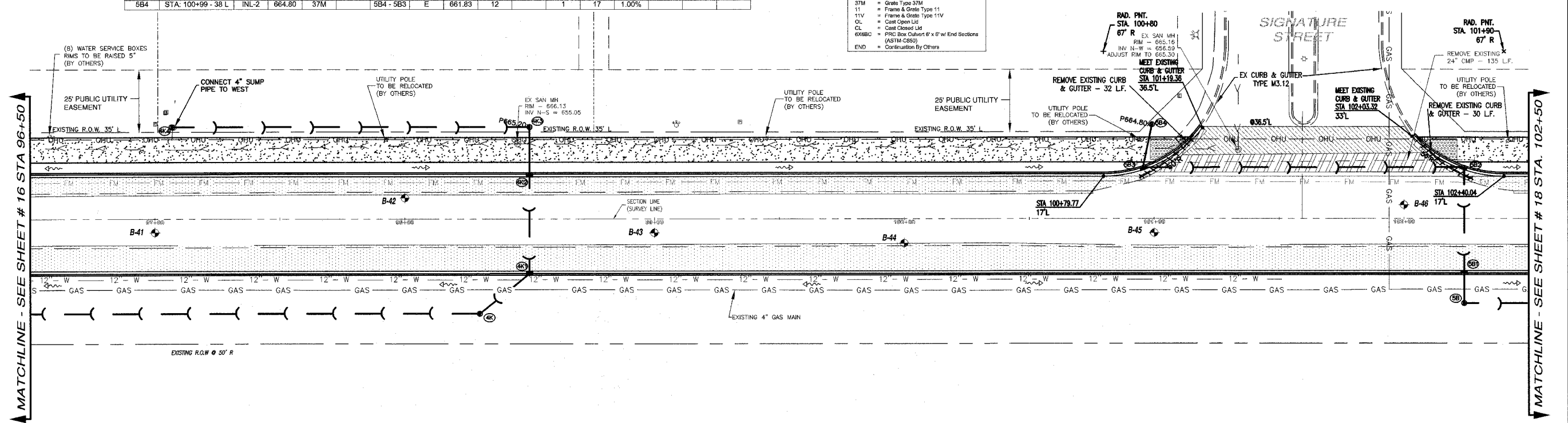
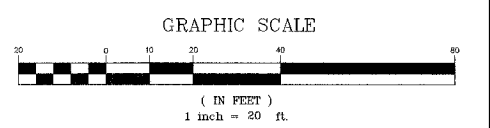
STORM SEWER STRUCTURES & PIPES

Structure Information				Out Pipe				In Pipe								
Structure ID	Location	Structure Type/Ø	Rim Elev	IDOT Type Fr	Lid	Pipe Segment	Direction	Invert	Pipe Size (in)	Added Spec	Pipe Type	Length (ft)	Slope	Direction	Invert	Pipe Size (in)
4K	STA: 88+30 - 38 R	INL-3	663.10	1	CL	4K - 4H	S	658.78	12		1	398	0.90%	NW	660.10	12
4K1	STA: 88+50 - 22 R	INL-3	665.15	11		4K1 - 4K	SE	661.06	12		1	24	4.00%	W	661.53	12
4K2	STA: 88+50 - 18 L	INL-3	665.25	11		4K2 - 4K1	E	661.91	12		1	38	1.00%	W	661.93	12
4K3	STA: 88+50 - 37 L	INL-3	665.20	1	OL	4K3 - 4K2	E	662.10	12		1	17	1.00%	S	662.12	12
4K4	STA: 97+07 - 37 L	INL-2	666.60	1	CL	4K4 - 4K3	N	663.54	12		1	142	1.00%			
5B	STA: 102+24 - 34 R	MH-4	663.20	1	CL	5B - 5A	N	659.97	18		1	174	0.30%	W	660.01	15
5B1	STA: 102+24 - 22 R	INL-3	664.00	11		5B1 - 5B	E	660.12	15		1	11	1.00%	W	660.49	15
5B2	STA: 102+24 - 21 L	INL-3	664.10	11		5B2 - 5B1	E	660.90	15		1	41	1.00%	S	661.00	12
5B3	STA: 100+95.5 - 21 L	INL-3	664.90	11		5B3 - 5B2	N	661.64	12		1	127	0.50%	W	661.86	12
5B4	STA: 100+99 - 38 L	INL-2	664.80	37M		5B4 - 5B3	E	661.83	12		1	17	1.00%			

STORM STRUCTURE LEGEND

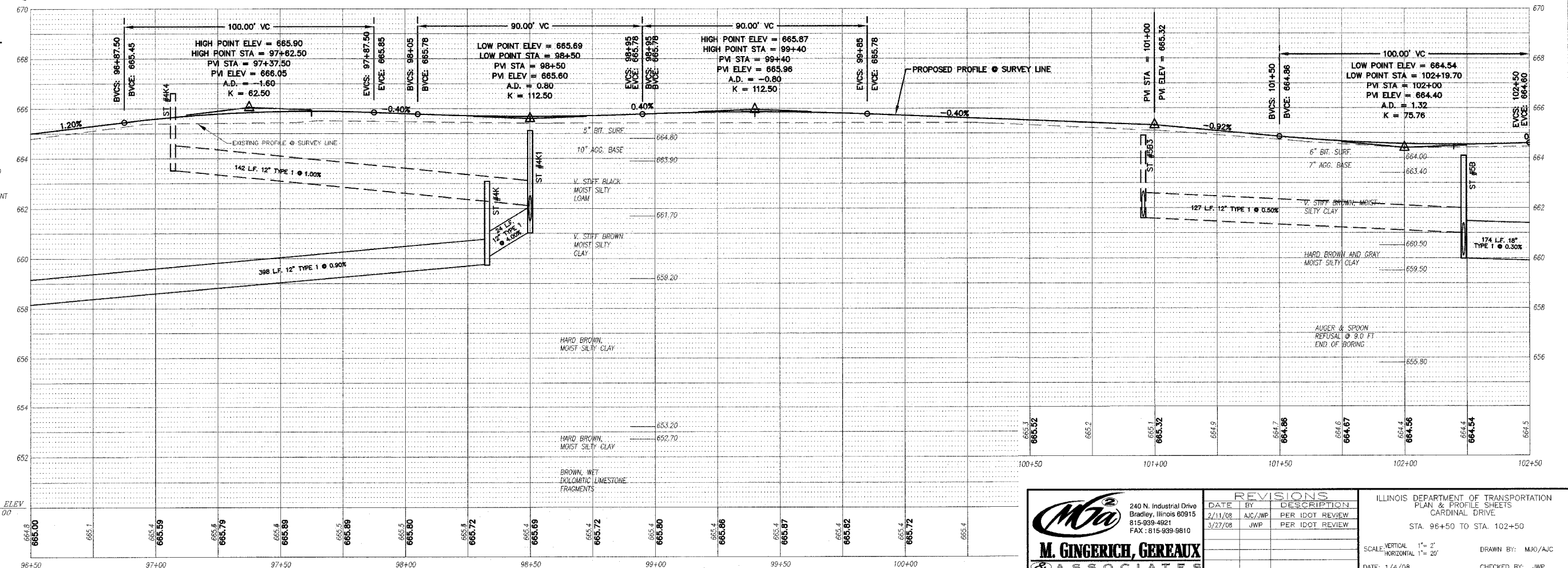
- EXMH = Existing manhole
- FES = PRC Flared End Section
- INL-2 = Inlet Ty A, 2 Dia
- INL-3P = Inlet Ty A, 3 Dia (Special)
- INL-3 = Inlet Ty B, 3 Dia
- CB-4 = Catch Basin Ty A, 4 Dia
- CB-5 = Catch Basin Ty A, 5 Dia
- MH-4 = Manhole Ty A, 4 Dia
- MH-5 = Manhole Ty A, 5 Dia
- MH-6 = Manhole Ty A, 6 Dia
- MH-7 = Manhole Ty A, 7 Dia
- RS-4 = Restrictor CRASH, 4 Dia
- TEE = RCP Inlet Tee
- INL-3P = Inlet Type A (Special)
- TE = Connect to pipe
- CUT = Connect to Box Culvert & cut pipe flush
- 1 = Frame A, Lisa Type 1
- STM = Grate Type STM
- 11 = Frame & Grate Type 11
- 11V = Frame & Grate Type 11V
- OL = Cast Open Lid
- CL = Cast Closed Lid
- 6X6BC = PRC Box Culvert 6' x 6' w/ End Sections (ASTM-C80)
- END = Continuation By Others

F.A.U. RTE.	SECTION	COUNTY	TOTAL SHEETS	SHEET NO.
6208	07-00093-00-RP	KANKAKEE	43	17
MG2A# M2-096			CONTRACT NO.: 87342	



LEGEND

- PAVEMENT WIDENING
- PAVEMENT REMOVAL
- BUTT JOINT
- PROPOSED STORM SEWER
- PROPOSED STORM STRUCTURE ID
- PROPOSED DRIVEWAY REPLACEMENT



**M. GINGERICH, GERAUX & ASSOCIATES**

240 N. Industrial Drive  
Bradley, Illinois 60915  
815-939-4921  
FAX: 815-939-9810

REVISIONS

DATE	BY	DESCRIPTION
2/11/08	AJC/JWP	PER IDOT REVIEW
3/27/08	JWP	PER IDOT REVIEW

ILLINOIS DEPARTMENT OF TRANSPORTATION  
PLAN & PROFILE SHEETS  
CARDINAL DRIVE  
STA 96+50 TO STA. 102+50

SCALE: VERTICAL 1" = 2'  
HORIZONTAL 1" = 20'

DATE: 1/4/08 DRAWN BY: MJO/AJC  
CHECKED BY: JWP